

Product datasheet for **MG211807**

Rexo1 (NM_025852) Mouse Tagged ORF Clone

Product data:

Product Type:	Expression Plasmids
Product Name:	Rexo1 (NM_025852) Mouse Tagged ORF Clone
Tag:	TurboGFP
Symbol:	Rexo1
Synonyms:	1700021P10Rik; 2610511M11Rik; AW050347; EloA-BP1; Rex1; Tceb3bp1
Mammalian Cell Selection:	Neomycin
Vector:	pCMV6-AC-GFP (PS100010)
E. coli Selection:	Ampicillin (100 ug/mL)
ORF Nucleotide Sequence:	>MG211807 representing NM_025852 Red=Cloning site Blue=ORF Green=Tags(s)

TTTTGTAATACGACTCACTATAGGGCGGCCGGAATTCGTCGACTGGATCCGGTACCGAGGAGATCTGCC
GCC**CGATCGCC**

ATGCTACGTTCTACCGGCTTCTCCGCTCCATCGACTGCCATACTGGGCGGGAGCTCCCGGGGGCCTT
GCCGGCGGCCCTACTGCCACTTCCGGCACCGGGAGCTCGGGTCCCGGCGCTCCCGGTAGCGGCGGCGC
AGCATCTCCTGCATCAGGGCTTGGCTATGACCCGTACAACCCAGAGCTGCCCCAGCCTCCTGTGCAGAGG
GAGAATGGTCTCTGGTCAGGGTATGGCATGCTGGAGCTGGAGCTGGTCAACCAGGCCATCGAGGCTG
TGGCGCGGAGGTGGAGCTGGAACAGAGCGCTACCAGGAGCTCCTCGAGACTGCACGGGGCACAGTGC
TGGGCCTTCAGCCCTGGCGCCTTGACGCCCTGCCACAAGCATAGATGACGATGACACCTTCTCATTGGCC
CTAACTTACACGCCGGGTGGCCTGCTGAGCCCGGATGCTGCCTACCAGCCACCCCACTGGCTGTCCCTG
CCGAGCCAGGGCACAAGTACTACTGGCCCTTACAGCAGGAGTCAAGGAGAGTGCAGGAGGTGCTGG
TGCCCTGGAGTATGTCCCAAGGCTGTGGGCCAGCCGCGCGCTGTGGCCGCCCTGTGTCTGGTGGCAAG
TATGTGGTGGATAGTTCAAAACCTTCAACAGATCTAGAGTATGACCCACTGTCCAATACTCAGCCCGGC
ACCTTGGCAGGGCCAGTGTAGGGATGAGAGGGCCACCAAGAGACCGCGGGGCTCCAGGGGTGCTGAGCC
ATACACTCCTGCCCTCAAGAAGCCCTGTGACCCCTCGGTGGCTGTGAGGCCAGGTCTCAGACTCAGAA
GATGATGTGACCAAGCCCCAAAGGCTGATGTTAGCAGCCCCAAGGCTGGAGCTGACCCCTGAAAGCAAG
CACCTGGGAAGCCTGTCTCCAAGGAGGGCAGAGAGCATGAGGACGGTGGCCTGCGGGCCACCAAGGAGAT
GGCTGTGACATGACGTGGAAGACCTTGGGCAGCCCCCAAGCACCAGACACAGTGTCTGTGGTCAAG
CCTGGCTCCCCAGCCAGGGCCTCTCAAGATGCTAGGGTCCCCAAGGAAGTAAAGCCAAAAAGAAGAAA
GTGGGACATCAGCCAGCCTCAGCCACAAGGACAAGGTTGCAAGAAAGACAAAAAGAAAGAGAAAGACCC
AGCCAGGCCCCGAGGGAAGGAAAAGGTGTGACGGACAAGAAGAGTGCAGCCAGTAACCCAGGGGG
AAGGCCAGGGGCTGAAGGGACCAAGAAAAGCCATCCTCTGCGACCACAGTGGCCAGCTCAGGAAAAG
GGGGTACAGCCGCCCTCCAGCACGGGACCTCAGGACTCTGGGCTGGTCCCCATGCACCACTGGCCTG
GAAGGCTGGTAGTCAAAGAAGATGTCATCGGAAAGTTGGTGAACGCAAGGCCGCTCCCTGGATGAA



[View online »](#)

GGAGCCCCCAGGACACCCCTAAGCTCAAGAAACGGGCCCTGAGCCATGCTGAACTATTTGGGGATGAGA
GTGAGGAGGAGGACTCAAGCCTGGGAGCGGGAGCACCCCGGGTCTGGCCCCGACCTGCCAGCCTTAG
CTCAGACTCAGAACTCAGACTCCGACTCCAGCCTGGGCCTGGACGAGACAAAGGTGCCAAGCGTCTCAAG
GCCGCGCCGCCGCATCCCCGTGCCGCCCTCCCATTGTCTCTCTCTCTCGTCTCGGGAGCCAGCC
AGTGTGCAGAGGAGGATGTGGACTACTCGGCTCTGGAGAAGGAGGTGGACTTCGATGTGGACCCTATGGA
GGAGTGCCTGCGGATCTCAACGAGTCCACCAGCGTGAAGACAGAGGACAAGGGCCGCTGGCCCCGAG
CCACCCAAGGAGAAGGCTGAGGAGAAGACACATGCGGGCCTGACCACTTTGTTCCCGGGGCAGAAGAGGA
GGGTCTCACACCTTTGCAAGCCAGGCAAGGAGTCAGAGGCCCAAGAGGACCCCGTGGCTCCCCAGC
ACGCCCCCGACTGCTCAGGAGGTGTGCTACCGCGAGCACAGCTAGCACAGAGGGACTCGGCCAGTTGG
CTACAGGCCGCCCGCGGCAACAGAGAGGCTCTCTCTCGTGCACATCTCAGCGCCTGGGGAGAAGAGGA
GGATTGCTCACGTACCAACCCCGACTGGCTGCCGCCCCACAGGTGCCAAGAGGGCGCTCTGCCAG
CAGCAGCCAGGCGTCCCACGGCCCCGAACCTGGCAGCCAGCCACTGAAGACACGCACATTGTGAGGGATG
GCATCTAAGACAACCACCACCGTACCCCCAAGCGCATCGCCACAGCCCATCACTCCAGAGTCTAAGA
AGCCTGTTATCCAAAAGAATTTGGCGCAAGGTTCCCACTGTGGTCCGCCAGCGCTATCTAACCTGTT
CATTGAGGAGTGTCTCAAGTTCTGTTCTGTTCCCAACCAGGAGGCCATCGAGAAGGCCCTGAATGAGGAAAAG
GTGGCGTATGACCGCAGTCCCAGCAAGAACATATACCTGAACGTGGCCGTGAACACCCCTAAGAAGCTAA
GGGGCCTGGTCCCCAACCCGTGCCAACCTCAGCAAAGCCAGTGGCCGAGGGTTGTGTCTCATAGGT
TGTAAGGGGGGCAAAATTTGGCAGCCAAAACCAGCTTCTCATTGAGCCGCCAGCAGTCCCGGGTAGAG
GAGCTGAAAGGGACTGCCTGTACAGCCGCTCAGGGAGTACCTGCTCACTCAGGAGCAGCTGAAGGAGA
ATGGTACCCCTTCCCCACCCAGAGCGCCAGGGGTGCCATCATCTTACAGCCGAGGAGAAGAAACC
CAAGGACCCCTCCTGCAGAATTTGCTGTCGCTGTGGCACAGAGTACCTTGTGCTCTCTCGGGCCGCTGC
GTGCGCAGTGAGGAGTGTACTACCACTGGGGCGGCTGCGCGGAATCGAGTGGCTGGGGCTGGGAGA
CCCAGTATATGTGCTGCTCAGTGCCTGCGCTCTGTAGGCTGTGAGTTGCCAAGCAACACGTGCAGGA
CGCCCGAAGGAGAACCCTGGAGGGCTTTGTGCGCACCTTCCAGAAGGAGCTGCCTGAAGATGCCCATGCA
GGGGTCTTTGCCCTCGACTGTGAGATGTCTACACTACATATGGCCTGGAGCTGACCCGAGTCACAGTTG
TGGACACAGACATGCAGGTGCTGTATGACACCTTTGTCAAGCCTGACAATGAAGTTGTTGACTACAACAC
CAGGTTCTCAGGGGTGACAGAGGCTGACCTTGTGGACACGAGCATCACGCTGCGGGACGTGCAGGCTGTC
TTGCTGAGCATGTTACAGCGCCGACACCATCCTCATCGGACACAGCCTGGAGAGCGACCTGCTGGCTCTCA
AGGTATCCACGGCACAGTGGTGGACACGTCTGTGCTTTCCACATCGCCTGGGCTGCCCTATAAGCG
CTCCCTGCGGAACCTCATGGCTGACTACCTCAGACAGATCATCAAGACAATGTGGACGGGCACAGCTCC
AGTGAGGATGCCAGTGCCTGCATGCACCTGTCTGGAAGATCCGAGAAGATGCCAAGACCAAGCGA

ACGCGTACGCGGCCGCTCGAG - GFP Tag - GTTTAA

Protein Sequence: >MG211807 representing NM_025852
 Red=Cloning site Green=Tags(s)

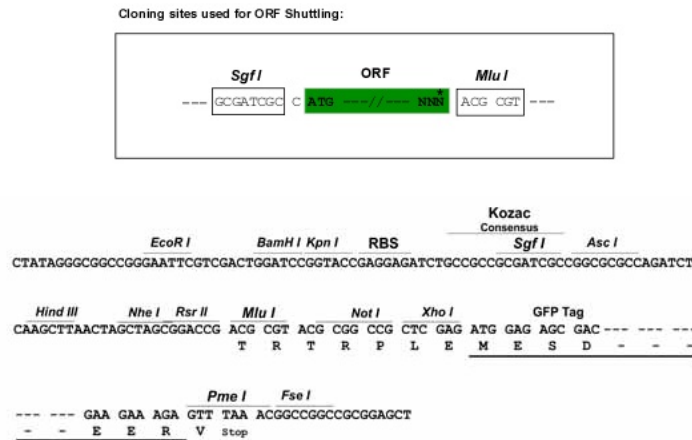
```
MLRSTGFFRSIDCPYWAGAPGGPCRRPYCHFRHRGARGPGAPGSGGAASPASGLGYDPYNPELPQPPVQR
ENGALGQGDGMLELELVNQAIEAVRGEVELEQRRYQELLELETARGHSAGPSALAPCSPATSIDDDDTFLA
LTYTPGGLLSPDAAYQPTPLAVPAEPGHKYS LAPSDRSQGRAAGGAGALEYVPKAVGQPRRCGRPVSGGK
YVVDSSKPDLEYPDLSNYSARHLGRASARDERATKRPRGSRGAEPYTPALKKPCDPFGGCEARFSDSE
DDVTSPPKADVSPKAGADPESKAPGKPVSKEGREHEDGGLRGTKEMAVQYDVEDLGQPPKAPDTVSVVK
PGSPARASQDARVPKEGKAKKKKSGTSASLSHKDKVRKKDKKKEKDPARPRGKEKVCTDKKKLPASNPRG
KAQGPEGTKKKPSSATTVASSGKGGSGRPSSTGPQDSGPGPHAPLAWKAGSAKKMSSGKLVERKARSLDE
GAPQDTPKLLKRALSHAELFGDESEEEDSSLGAGAPRVWPPTLPSLSSDSESDSSSLGLDETKVPKRLK
AAPPASPVPPSPLSSSSSSGASQCAEEDVDYSALEKEVDFDVPMEELRIFNESTSVKTEDKGRLARQ
PPKEKAEETHAGLTTLFPGQKRRVSHLCKPGKESEAPKRTPVAPPARPPTAQEVCYRRAQLAQRDSASW
LQAAPRPTERLSSVHISAPGEKRRIAHVNPRLAAAPTGAKRALSSSSQASHGPEPGSQPLKTRTLSGM
ASKTTTTVTPKRIAHSPSLQSLKPKVIPKEFGGKVPTVVRQRYLNLFIEECLKFCSSNQEAIEKALNEEK
VAYDRSPSKNIYLNVAVNLTLLKLRGLVPNTVPLSKASGRRVVSHVVLGGKLAAKTSFSLSRPSSPRVE
ELKGTALYSRLREYLLTQEQLKENGYPFHPERPGGAIIFTAEKKPKDPSERICCCRCGTEYLVSSSGRC
VRSEECYHWGRLRRNRVAGGWETQYMCCSAAVGSVGCQVAKQHVQDGRKENLEGFVRTFQKELPEDAHA
GVFALDCEMSYTTYGLELTRVTVVDDTMQVYDFTFVKPDNEVDYNTRFSGVTEADLVDTSLTRDQVAV
LLSMFSADTILIGHSLESDLLALKVIHGTVVDTSVLFPHRLGLPYKRSRLNLMADYLRQI IQDNVDGHSS
SEDASACMHLVIWKIREDAKTKR
```

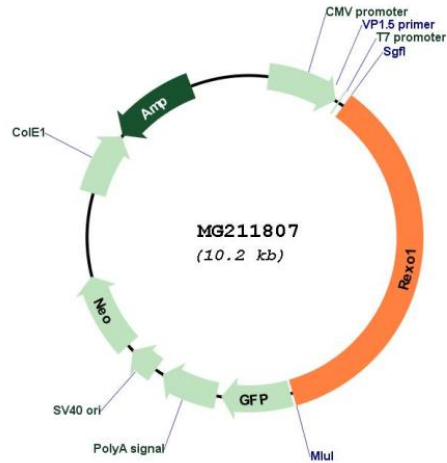
TRTRPLE - GFP Tag - V

Restriction Sites:

SgfI-MluI

Cloning Scheme:



Plasmid Map:


ACCN: NM_025852

ORF Size: 3639 bp

OTI Disclaimer: The molecular sequence of this clone aligns with the gene accession number as a point of reference only. However, individual transcript sequences of the same gene can differ through naturally occurring variations (e.g. polymorphisms), each with its own valid existence. This clone is substantially in agreement with the reference, but a complete review of all prevailing variants is recommended prior to use. [More info](#)

OTI Annotation: This clone was engineered to express the complete ORF with an expression tag. Expression varies depending on the nature of the gene.

Components: The ORF clone is ion-exchange column purified and shipped in a 2D barcoded Matrix tube containing 10ug of transfection-ready, dried plasmid DNA (reconstitute with 100 ul of water).

Reconstitution Method:

1. Centrifuge at 5,000xg for 5min.
2. Carefully open the tube and add 100ul of sterile water to dissolve the DNA.
3. Close the tube and incubate for 10 minutes at room temperature.
4. Briefly vortex the tube and then do a quick spin (less than 5000xg) to concentrate the liquid at the bottom.
5. Store the suspended plasmid at -20°C. The DNA is stable for at least one year from date of shipping when stored at -20°C.

RefSeq: [NM_025852.3](#), [NP_080128.2](#)

RefSeq Size: 5249 bp

RefSeq ORF: 3642 bp

Locus ID: 66932

UniProt ID: [Q7TT28](#)

Cytogenetics: 10 C1

Gene Summary: Seems to have no detectable effect on transcription elongation in vitro.[UniProtKB/Swiss-Prot Function]