

## Product datasheet for **MG211788**

### Timeless (BC082770) Mouse Tagged ORF Clone

#### Product data:

Product Type:	Expression Plasmids
Product Name:	Timeless (BC082770) Mouse Tagged ORF Clone
Tag:	TurboGFP
Symbol:	Timeless
Synonyms:	Debt69, tim
Mammalian Cell Selection:	Neomycin
Vector:	pCMV6-AC-GFP (PS100010)
E. coli Selection:	Ampicillin (100 ug/mL)
ORF Nucleotide Sequence:	>MG211788 representing BC082770 Red=Cloning site Blue=ORF Green=Tags(s)

TTTTGTAATACGACTCACTATAGGGCGGCCGGAATTCGTCGACTGGATCCGGTACCGAGGAGATCTGCC  
GCC**CGATCGCC**

ATGGACTGTACATGATGAACTGTGAACTTCTAGCCACGTGTAGCGCCCTTGGTACTTGAAGGAGGGA  
CTTACCACAAGGAGCCGATTGCCTGGAGAGTGTGAAGGATTTGATCCGATACCTGAGGCACGAGGATGA  
GACCCGAGATGTGCGGCAGCAGCTGGGAGCTGCACAGATCCTGCAGAGCGACCTCCTGCCAATCCTCAGC  
CAGCATCGCCAGGACAAGCCTCTCTTCGATGCCGTGATCAGGCTGATGGTAAATTTGACACAGCCAGCCT  
TGCTCTGTTTTGGCAGCGTGCCTAAGGACTCCAGTGTACGGCACCATTTCTGCAGTTCTAACGTACCT  
GCAAGCCTACAAAGAGGCCCTTTGCCAGTGAGAAGGCATTTGGAGTCTCAGCGAGACCTTGATGAATTG  
CTACAGCTGGGCTGGGAGGATCGCAAGAAGAACAACCTTGCTGATCGAGCGGATCCTTCTGCTGGTCA  
GAAATATTCTCCATGTCCCGCCAACCTTGAGCAGGAGAAGAGTATCGATGATGATGCCAGCATCCACGA  
CCGTCTCCTTTGGGCAATTCACCTCAGTGGCATGGACGACTTGCTCCTCTTCTGTCAGCTCATCCGCC  
GAGCAGCAGTGGAGCCTCCATGTGCTGGAGATCATCTCCCTCATGTTCCGAGACCAGACCCTGAGCAGC  
TAGCGGGAGTAGGGCAGGACGCTTGGCTCAGGAGCGAAGCAGGATGTGGCAGAATTGGAGGTGCTGCC  
CCAACGGGAGATGGCGGAGAAGAGAGCTCGGGCCCTCCAGCGAGGAAACAGGCACCTCTCGATTTGGGGC  
TCCTACATTGTCCAGGGTTGAAATCTATTGGGAGAAGGATGTGCTTTTCAAAAGGCCTTCACAATC  
TCCAGAACTACAGCTCAGATCTGGGAAAGCAGCCAGGAGGGTGCCCAAGCGTCTCAGGCTGCCAGGA  
GCTGTCTGTCCATCGCCGCTCTGTCTGAATGTGAGACTTTCCTCAGAGACTTCTGCTCTGAGTTCCTG  
GAGAACTGCTACAACCCGCTCATGGGCGCGGTCAAGGATCATCTGCTTCGGGAGAGAGCGCAGCAGCATG  
ACGAGACTTACTACATGTGGCAATGGCTTTCTTCATGGCCTTCAACCGAGCTGCCACCTTCGCCCCGG  
CCTTGTCTGAGACCCTCAGTATCCGTACCTTTCACTTTGTGGAGCAGAACCTCACCACTACTACGAG  
ATGATGCTGACAGACCGCAAGGAGGCCCTCCTGGGCGCGCAGGATGCACCTGGCCCTGAAGGCCATACC  
AGGAGCTGCTGGCCACGGTGAACGAGATGGACATGTGCCAGATGAGGCTGTTAGGGAGAGCAGTCGAT  
CATCAAAAACAACATTTTCTATATGATGGAGTACCGAGAATATTCTGGCGCTTTTCGAAAGTTGAT



[View online »](#)

GAGAGATACCATCCACGCTCATTCTTCGAGACCTGGTGGAAACCCACCTCTTCTCAAATGTTGG  
AGCGCTTTTGCCGGAGCCGCGGGAACTGATGGTGCAGAACAAAAGAAAAAGAGAAAAAGAAAAAGAA  
GGTTCAGGACCAGGGTGTGCTTCTCACAAAGCCCCGGGAGCTGGAGGCCATGTGCCAGCCCTGGCA  
GAGCAGCTGCTGCAGTGTGCCAGGACCCTGAGCTCAGTGTGGACCCCGTTCGTTCCCTTTGATGCGGCT  
CAGAGGTGCCAGTGGAGGAGCAGCGGTAGAAGCCATGGTGAAGTCCAAGACTGCCTACGGTGGCCA  
GGCCCCGAAGCCCTGGCCCTCCTGCGGTCTGCCGGGAAGTGTGGCCTGAAGGAAATGCGTTTGGCTCT  
CCAGTCATTTCCCAGGGGAAGAAATGCAGTTGCTGAAACAAATCCTCTCCACGCCCTTCCCAGGCAGC  
AGGAGCCAGAAGAAGGAGATGCAGAGGAGGAAGAGGAAGAGGAGGAGGAAGAGGAGTTACAGGTGGTCCA  
GGTGTCTAGAGAAGGAGTTAACTTTCTGGAATACCTGAAACGCTTCGCATCCTCAACCATCGTCCGGCC  
TACGTGCTTCTCCTGCGGAGCTACAGGCAGAACAGTGTCTCACACCAACCACTGCATCGCCAAGATGCTGC  
ACCGGCTGGCCATGGCCTGGGGATGGAAGCCCTGCTTTTCCAGCTGTCCCTGTTCTGCCTTCAATCG  
GCTGCTTAGTGACCCAGCTGTGCGGCCTACAAAGAGCTAGTGACTTTTGCCAAATACATCATTGGCAAG  
TTCTTTGCGTTGGCTGCCGTGAACCAGAAAGCCTTTGTGGAGTGTCTGTTCTGGAAGAACCAGCAGTGG  
TTCGGGAAATGACCCAGGATATGGCTCCCTCGACAGTGGTCTTCCAGCCACAGAGCTCCTCTGTGGAG  
CCCTGAGGAAGAGGCCAGCTTACGAACTATACCTCGCCACAAGGATGTGGAAGTCAAGATGTAGTG  
GAAACCATATTGGCGCACCTGAAAGTCGTTCTCGAACACGCAAGCAGGTATCCACCACCTGGTCCGGA  
TGGCCTGGCCGACAGCGTCAAGGAGTTCAGAAGAGGAAGGGACCCAGATTGTCTTGTGGACGGAGGA  
CCAGGAGCTGGAGTTACAGCGGCTCTTTGAGGAGTTCGGGACTCTGATGATGTTCTTGGTCAAATCATG  
AAGAATATCACAGCCAAACGTTACGGGCTCGAGTAGTGGACAACTGTTGGCCCTGGGGTGGTGTCTG  
AGCGGAGGCAGCTATAACAAGAACGGAGAAAGAAGCTGGCGCCTTCTTGCATGAATGGAGAAAAGTCCCC  
GAGAGACCCCTGGCAGGAAGATCCGGAAGAGGAAGACGAACACTTGCCAGAGGACGAAAGTGAAGATGAG  
GAGAGTGAGGAAGGCTTCCATCAGGACAGGTCAGGGCAGCTCATCTCTCTGCTGAAAACCTCGGTG  
AGAGCCTTCGTCAGGAAGCCTCTGCTCCCCCTCCTGTGGCTCCAGAGCTCCCTGATCCGAGCAGCAAA  
TGACCGAGAAGAGGATGGCTGCTCCAGCAATCCCTCTGGTGCCTCTGACAGAGGAAAAATGAGGAAGCA  
ATGGAGAACGAACAGTTTCAGCATCTGCTACGCAAGCTAGGGATCCGGCCGCCAGCTCAGGGCAGGAAA  
CCTTCTGGAGAATTCCAGCCAACTGAGCTCCACCCAGCTTCGGAGGGTGGCTGCTTCTTTGAGTCAGCA  
AGAAAACGAGGAGGAAAGGGAAGAGGAGCCAGAGCCAGGAGTCCCAGGAGCAGGGTCCCAGTGGAGG  
CACCGGACAGAAGCCCTGAGAGCCCTTCTGTCAGCCCGTAAGAGGAAAGCAGGCCCTGGGGCTACAGAAG  
AGGAGGCCACTGGGGAGGAAGAATGGAACCTCAGCGCCCAAGAAGCGGCAACTGCTGGACAGCGACGAAGA  
GGAAGATGATGAGGGGAGGAGGCAAGCAGTGTCCGGAACGCCAAGAGTCCACAGGAAGAAACGGTTTCAG  
ATTGAGGATGAGGATGAC

ACGCGTACGCGGCCGCTCGAG - GFP Tag - GTTTAA

Protein Sequence: >MG211788 representing BC082770  
 Red=Cloning site Green=Tags(s)

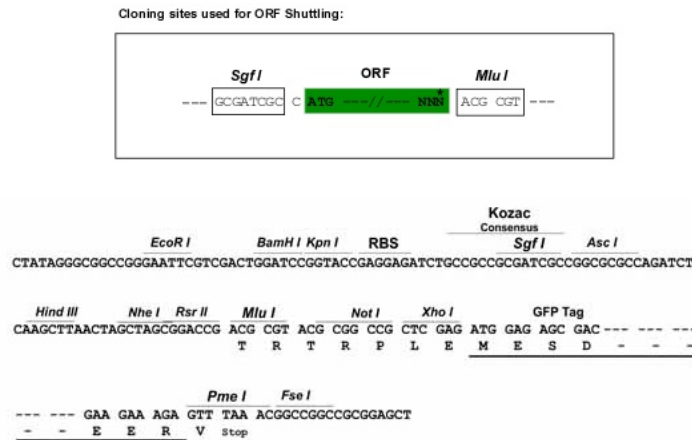
MDLYMMNCELLATCSALGYLEGGTYHKEPDCLESVKDLIRYL RHEDETRDVRQQLGAAQILQSDLLPILT  
 QHRQDKPLFDAVIRLMVNLTQPALLCFGSVPKSSVRHHFLQVLYLQAYKEAFASEKAFGLSETLYEL  
 LQLGWEDRQEEDNLLIERILLVRNILHVPANLEQEKSIDDDASIHDRLLWAIHLSGMDDLLFLSSSSA  
 EQQWSLHVLEIISLMFRDQTPEQLAGVGQGRLAQERSTDVAEVLVRQREMAEKRARALQRGNRHSRFGG  
 SYIVQGLKSIGEKDVFHKGHLNHLQNYSSDLGKQPRRVPKRRQAAQELSVHRRSVLNVRLFDRFCSEFL  
 ENCYNPLMGAVKDHLRERAAQHQDETYMAMAFFMAFNRAATFRPGLVSETLSIRTFHFVEQNLNYYE  
 MMLTDRKEAASWARRMHLALAKAYQELLATVNEMDMCPDEAVRESSRIKNNIFYMMEYRELFLALFRKFD  
 ERYHPRSFLRDLVETTHLFLKMLERFCRSRGNLMVQNKRRKKKKKKVQDQGVAFSQSPGELEAMWPALA  
 EQLLQCAQDPELSDVPVVPFDDAASEVPVEEQRVEAMVRIQDCLTAGQAPQALALLRSAREVWPEGNAFGS  
 PVISPGGEEMQLLKQILSTPLPRQEQPEEGDAEEEEEEEEELQVVQVSEKEFNFLYLRKRFASSTIVRA  
 YVLLLSYRQNSAHTNHCIKMLHRLAHGLGMEALLFQLSLFCLFNRLSDPAAAAAYKELVTFKYIIGK  
 FFALAAVNQKAFVELLFWKNTAVVREMTQGYGSLDSGSSSHRAPLWSPEEEAQLQELYLAHKDVEGQDQV  
 ETILAHLKVVPRTRKQVIHHLVRMGLADSVKEFQKRKGTQIVLWTEDELELQRLFEEFRDSDVLDGQIM  
 KNITAKRSRARVVDKLLALGLVSERRQLYKRRRKLAPSCMNGEKSPRPWQEDPEEEDEHLPEDESEDE  
 ESEEGPSGQGGSSSLSAENLGESLRQEGLSAPLLWLQSSLIRAANDREEDGCSQAIPLVPLTEENEEA  
 MENEQFQHLLRKLGRPPSSGQETFWRIPAKLSSQTLRRAVASLSQENEEEEEEPEPGVPGEQGPSEE  
 HRTEALRALLSARKRKAGLGPTEEEATGEEEWNSAPKKRQLLDSDEEEDDEGRQAVSGTPRVHRKKRFQ  
 IEDEDD

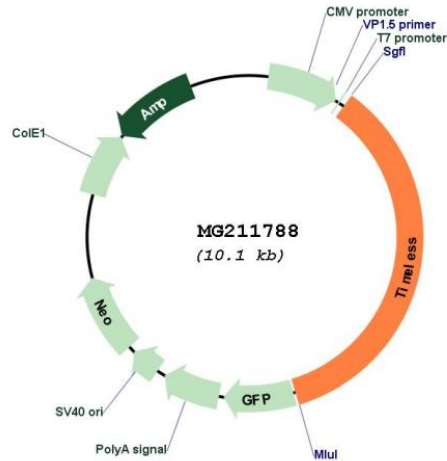
TRTRPLE - GFP Tag - V

Restriction Sites:

SgfI-MluI

Cloning Scheme:



**Plasmid Map:**


**ACCN:** BC082770

**ORF Size:** 3590 bp

**OTI Disclaimer:** The molecular sequence of this clone aligns with the gene accession number as a point of reference only. However, individual transcript sequences of the same gene can differ through naturally occurring variations (e.g. polymorphisms), each with its own valid existence. This clone is substantially in agreement with the reference, but a complete review of all prevailing variants is recommended prior to use. [More info](#)

**OTI Annotation:** This clone was engineered to express the complete ORF with an expression tag. Expression varies depending on the nature of the gene.

**Components:** The ORF clone is ion-exchange column purified and shipped in a 2D barcoded Matrix tube containing 10ug of transfection-ready, dried plasmid DNA (reconstitute with 100 ul of water).

**Reconstitution Method:**

1. Centrifuge at 5,000xg for 5min.
2. Carefully open the tube and add 100ul of sterile water to dissolve the DNA.
3. Close the tube and incubate for 10 minutes at room temperature.
4. Briefly vortex the tube and then do a quick spin (less than 5000xg) to concentrate the liquid at the bottom.
5. Store the suspended plasmid at -20°C. The DNA is stable for at least one year from date of shipping when stored at -20°C.

**RefSeq:** [BC082770](#), [AAH82770](#)

**RefSeq Size:** 4470 bp

**RefSeq ORF:** 3590 bp

**Locus ID:** 21853

**Cytogenetics:** 10 76.49 cM

**Gene Summary:**

The protein encoded by this gene is highly conserved and is involved in cell survival after damage or stress, increase in DNA polymerase epsilon activity, maintenance of telomere length, and epithelial cell morphogenesis. The encoded protein also plays a role in the circadian rhythm autoregulatory loop, interacting with the PERIOD genes (PER1, PER2, and PER3) and others to downregulate activation of PER1 by CLOCK/ARNTL. Changes in this gene or its expression may promote prostate cancer, lung cancer, breast cancer, and mental disorders. Several transcript variants encoding different isoforms have been found for this gene. [provided by RefSeq, Feb 2014]