

## Product datasheet for **MG211768**

### Ift122 (NM\_031177) Mouse Tagged ORF Clone

#### Product data:

Product Type:	Expression Plasmids
Product Name:	Ift122 (NM_031177) Mouse Tagged ORF Clone
Tag:	TurboGFP
Symbol:	Ift122
Synonyms:	C86139; sobp; Wdr10
Mammalian Cell Selection:	Neomycin
Vector:	pCMV6-AC-GFP (PS100010)
E. coli Selection:	Ampicillin (100 ug/mL)
ORF Nucleotide Sequence:	>MG211768 representing NM_031177 Red=Cloning site Blue=ORF Green=Tags(s)

TTTTGTAATACGACTCACTATAGGGCGGCCGGAATTCGTCGACTGGATCCGGTACCGAGGAGATCTGCC  
GCC**CGATCGCC**

ATGAGGGCCGTGTTGACGTGGAGAGACAAAGCGGAGCAGTGTATCTACGACCTCGCATTTAAGCCTGATG  
GAACACAACCTGATTCTGGCTGCAGGAAACAGATTGCTGGTTTATGACACCTCTGATGGCACCTTACTTCA  
GCCCTGAAGGGACACAAAGACACCGTGTACTGTGTGGCGTATGCAAAGGATGGCAAGCGCTTTGCATCT  
GGATCTGCTGACAAGAGCATATTATCTGGACCTAAAACCTGAAGGCATTCTGAAGTACACGCACAACG  
ACTCTATTCAGTGTGTCTCCTACAATCCTGTTACCCACCAGCTGGCATCTTGTTCTCCAGTGACTTTGG  
GTTATGGTCTCCTGAGCAGAAGTCTGTGTCCAAGCACAATCCAGCAGCAAGATCACGTGCTGCAGCTGG  
ACAAACGATGGTCAGTACCTGGCTCTGGGCATGGCCAATGGCATCATCAGTATACGGAACAAGAATGGTG  
AAGAGAAAGTGAAGATCGAGCGCCCTGGGGCTCCCTCTCCCAATATGGTCCATCTGCTGGAACCCCTC  
AAGAGAGGAACATAATGACATCCTGGCTGTAGCTGACTGGGGACAGAACTTTCTTCTACCAGCTGAGT  
GGAAAACAGATTGGGAAGGATCGGCCACTGAACTTTGACCCCTGTTGCATCAGCTACTTCACTAAAGGAG  
AGTACATTTTGGTGGGAGGTTTACAGACAAGCAGGTATCTCTTTTCCCAAGGATGGAGTGGACTGGGGAC  
CGTTGGGGAGCAGAACTCCTGGGTGTGGACCTGTAGAGTGAACCTGACTCCAATTATGTGGTGGTCGGC  
TGCCAGGATGGCACCATCTCTTCTACCAGCTCATCTTTCAGCACAGTCCATGGGCTCTACAAGATCGGT  
ATGCCTACAGGGACAGCATGACAGACGTATCGTGCAGCACCTCATCACAGAGCAGAAAAGTTAGGATTA  
GTGCAGAGAGCTTGTCAAGAAAATTGCCATCTATAAAAAATCGATTAGCTATCCAGCTGCCAGAGAAGATC  
CTCATCTACGAGCTGACTCTGAAGACTCGACAGACATGCACTACCGGGTAAAGGAGAAAATTGTCAAGA  
AGTTTGTAGTGCAACCTGCTGGTGGTGTGTGCTGACCACATCATCTGTGCCAGGAGAAACGGCTACAGTG  
CCTGTCTTCAGTGGAGTGAAGGAAAGGGAATGGCAGATGGAATCTCTCATCCGCTACATCAAGGTGATC  
GGTGGCCCTGCTGGAAGAGAAGTCTGTTGGTAGGCCTGAAAAACGGCCAGATCCTGAAGATCTTTGTGG  
ACAATCTTTTGTATTGCTGCTGAAGCAGGCCACAGCCGTGCGCTGCCTGGACATGAGTGCCTCCCG  
GAACAAGCTGGCTGTTGGTGGATGAGAATGACACGTGCCTGGTGTACGACATCCACACGAAGGAAGTCTT



[View online >](#)

TTCCAGGAACCGAATGCTAACAGCGTGGCCTGGAACACGCAGTGTGAGGACATGCTCTGCTTCTCTGGAG  
GAGGCTACCTCAACATCAAGGCCAGCACCTTCCAGTGCACCAGCAGAAGCTGCAGGGCTTTGTGGTTGG  
CTACAACGGCTCCAAGATCTTCTGCCTTCATGTCTTCTATGTCTGCCGTGGAGGTGCCACAGTCCGCT  
CCAATGTACCAGTACCTCGATAGGAAGATGTTCAAAGAAGCATATCAGATCGCTTGGTGGGAGTGACAG  
ACGCTGATTGGCGTGAAGTGGCCATGGAAGCTCTAGAAGGACTAGAGTTTGAGACGGCAAGGAAGGCCTT  
CACCAGAGTCCAGGACCTTCGATACCTAGAAGTATCAGCAGTATTGAGGAGAGGAAGAAGAGGGGAGAG  
ACAACAATGACCTGTTTCTGGCAGATGTGTTTCTACCAGGGGAAGTTTCATGAAGCCGCCAAACTAT  
ACAAGAGGAGCGGCATGAGAACCCTCGCTCTCGACATGTATACTGACCTCTGCATGTTTGAGTACGCCAA  
GGATTTCTTGATCTGGAGACCCTAAAGAAACGAAGATGCTCATCACCAGCAGCCGACTGGGCCAGA  
AACATCAATGAGCCCAAAGCTGCAGTGGAGATGTACATCTCAGCAGGGGAGCAGGCCAAGGCCATAGAGA  
TCAGCGGCAGCCATGGCTGGGTGGACATGTTGATAGACATTGCTCGGAAGCTGGACAAGGCTGAACGGGA  
GCCCTGCTCATGTGTGCTTGTACTTTAAGAAGCTGGACAGTCTGGCTATGCTGCTGAGACCTACCTG  
AAGATCGGGACCTGAAGTCTCTGGTGCAGCTGTATGTGGACCAAGCGCTGGGATGAGGCCTTTGCGT  
TAGGTGAGAAGCACCCGGAGTTCAAGGATGACGTCTACGTGCCCTACGCGCAGTGGCTGGCGGAGAACGA  
CCGCTTTGAGGAAGCCCAGAAAGCCTTCCACAAGGCCGGAGGCAGGGAGAAGCAGTCCGGGTGCTGGAG  
CAGCTCACGCACAATGCTGTGGTGGAGAGCAGGTTTAAACGACGCTGCCTATTATTACTGGATGCTGTCCA  
TGCAAGTGCCTCGACATGGCTCAAGATCCTGCCAGAAGGACGCGATGCTGGACAAGTTTACCACCTTCCA  
ACACCTGGCTGAGCTGTACCATGGCTATCAAACCATTCACCGATACACGGAGGAGCCATTAGCTTTGAC  
CTCCCTGAAACCCTCTTCAACATCTCCAAGTCTTGTGTCACAGCCTGACCAAGGCCACCCCTTGGGTA  
TCTCAAAGTGAATACACTCTTCACTGGTAAGCAGAGCAAGGCTCTGGGTGCTTACAAGCTGGCCCG  
GCATGCCTATGACAAGCTACGGGGGCTGCAGATCCCCGCCAGGATCCAGAAGTCCATTGAGCTGGGCACC  
CTGACCATCCGCTCCAAGCCCTTCCATGACAGTGAAGGAGCTGGTACCCTTGTGCTACCGCTGTTCTACCA  
ACAACCCGCTGCTGAACAACCTTGGCAAGTCTGCATCAACTGCCGCCAGCCCTTCACTTCTCCGCCTC  
TTCCTATGAGGTGCTGCACCTGGTGAATTCTACCTGGAAGAGGGGATCACTGACGAAGAAGCTGTTGCC  
CTCATCGATCTGGAGGCACCAAGACACAAGAGGGAGGGCAAGTGGCGAGAGACCTCAAGCAACAATTCCC  
AGACGTTGAAGCTGGACGAGACCATGGACTCCATAGGAGAAGATGACCCATTTACAGCCAAGCTGAGCTT  
TGAGCAAGGTAGCTCTGAGTTTGTGCCTGTGGTGGTGAACCGGTGAGTACTACGCTCCATGAGCCGAAGA  
GATGTTCTCATCAAGCGCTGGCCCCGCCGCTGCAATGGCAATATTTCCGCTCGCTGTTGCCTGATGCCT  
CCATCACCATGTGCCCTCCTGCTTTCAGATGTTCCATTAGAGGACTACGAACTGCTTGTGCTCCAGCA  
CGCCTGCTGCCCTTACTGCCGAAGGCGTATCGACGACACTGGCCCC

ACGCGTACGCGGCCGCTCGAG - GFP Tag - GTTTAA

Protein Sequence: >MG211768 representing NM\_031177  
 Red=Cloning site Green=Tags(s)

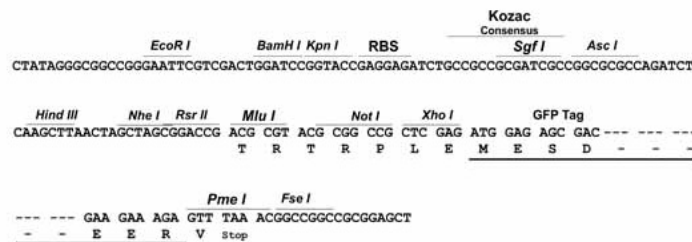
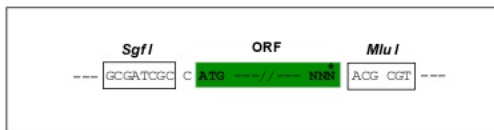
MRAVL TWRDKAEQCIYDLAFKPDGTQLILAAGNRLLVYDTS DGTLLQPLKGHKD TVYCVAYAKDGKRFAS  
 GSADKSI I IWTSKLEGI LKYTHNDSIQCVSYNPVTHQLASCSSDFGLWSPEQKSVSKHKSSSKITCCSW  
 TNDGQYLALGMANGI I SIRNKGEEKVKIERPGGSLSPIWSICWNPSREEHNDILAVADWGQKLSFYQLS  
 GKQIGKDRPLNFDPC CISYFTKGEYILVGGSDKQVSLFTKDGVR LGTVGEQNSWVWTCRVKPD SNYVVVG  
 CQDGTISFYQLIFSTVHGLYKDRYAYRDSMTDVI VQHLITEQKVR IKCRELVKKI AIYKNRLAIQLPEKI  
 LIYELYSEDSTMHYRVKEKIVKKEFECNLLVVCADH IILCQEKRLQCLSFSGVKEREWQMESLIRYIKVI  
 GGPAGREGLLVGLKNGQILKIFVDNLF AIIVLLKQATAVRCLDMSASRNKLAVVDENDTCLVYDIHTKELL  
 FQEPNANSVAVNTQCEDMLCFSGGGLN I KASTFPVHQK LQGFVVG YNGSKIFCLHVF SMSAVEVPQSA  
 PMYQYLD RKMFK EAYQIACLGVTDADWRELAMEALEGLEFETARKAFTRVQDLRYLELISSIEERKKRGE  
 TNNDLFLADVFSYQGFHEAAKLYKRSGHENLALDMYTDL CMFEYAKDFL GSGDPKETKMLITKQADWAR  
 NINEPKAAVEMYI SAGEHAKAIEISGSHGWV DMLIDIARKLDKAEREPLLMCACYFKKLDSPGYAAETYL  
 KIGDLKSLVQLYVDTKRWDEAFALGEKHPEFKDDVYVPYAQWLAENDRFEEAQKAFHKAGRQGEAVRVLE  
 QLTHNAVVE SRFNDAAYYWMLSMQCLDMAQDPAQKDAMLDKFHFFQHLAELYHG YQTIHRYTEEPF SFD  
 LPETLFNISKFLHLSTKATPLGTSKVNTLFTLAKQSKALGAYKLARHAYDKLRGLQIPARIQKSIELGT  
 LTI RSKPFHDSEELVPLCYRSTNNPLLN LGNVCINC RPFFIFSASSYEV LHLVEFYLEEGITDEEAVA  
 LIDLEAPRHKREGKWRETSNNSQTLKLD ETMDSIGEDDPFTAKLSFEQGSSEFV P VVVNRSVLRMSRR  
 DVLIKRWPPPLQWQYFRSLLPDASITMCPSCFQMFHSEDYELLVLQHACCPYCRRRIDDTGP

TRTRPLE - GFP Tag - V

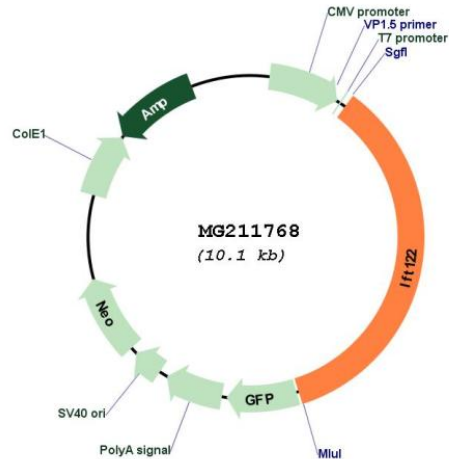
Restriction Sites: SgfI-MluI

Cloning Scheme:

Cloning sites used for ORF Shuttling:



## Plasmid Map:



**ACCN:** NM\_031177

**ORF Size:** 4080 bp

**OTI Disclaimer:** The molecular sequence of this clone aligns with the gene accession number as a point of reference only. However, individual transcript sequences of the same gene can differ through naturally occurring variations (e.g. polymorphisms), each with its own valid existence. This clone is substantially in agreement with the reference, but a complete review of all prevailing variants is recommended prior to use. [More info](#)

**OTI Annotation:** This clone was engineered to express the complete ORF with an expression tag. Expression varies depending on the nature of the gene.

**Components:** The ORF clone is ion-exchange column purified and shipped in a 2D barcoded Matrix tube containing 10ug of transfection-ready, dried plasmid DNA (reconstitute with 100 ul of water).

**Reconstitution Method:**

1. Centrifuge at 5,000xg for 5min.
2. Carefully open the tube and add 100ul of sterile water to dissolve the DNA.
3. Close the tube and incubate for 10 minutes at room temperature.
4. Briefly vortex the tube and then do a quick spin (less than 5000xg) to concentrate the liquid at the bottom.
5. Store the suspended plasmid at -20°C. The DNA is stable for at least one year from date of shipping when stored at -20°C.

**RefSeq:** [NM\\_031177.1](#)

**RefSeq Size:** 4059 bp

**RefSeq ORF:** 3552 bp

**Locus ID:** 81896

**UniProt ID:** [Q6NWW3](#)

**Cytogenetics:** 6 E3

**Gene Summary:**

As a component of the IFT complex A (IFT-A), a complex required for retrograde ciliary transport and entry into cilia of G protein-coupled receptors (GPCRs), it is required in ciliogenesis and ciliary protein trafficking (By similarity). Involved in cilia formation during neuronal patterning. Acts as a negative regulator of Shh signaling. Required to recruit TULP3 to primary cilia (PubMed:19000668, PubMed:21209331).[UniProtKB/Swiss-Prot Function]