

## Product datasheet for **MG211760**

### Itga2 (NM\_008396) Mouse Tagged ORF Clone

#### Product data:

Product Type:	Expression Plasmids
Product Name:	Itga2 (NM_008396) Mouse Tagged ORF Clone
Tag:	TurboGFP
Symbol:	Itga2
Synonyms:	CD49B; DX5
Mammalian Cell Selection:	Neomycin
Vector:	pCMV6-AC-GFP (PS100010)
E. coli Selection:	Ampicillin (100 ug/mL)
ORF Nucleotide Sequence:	>MG211760 representing NM_008396 Red=Cloning site Blue=ORF Green=Tags(s)

TTTTGTAATACGACTCACTATAGGGCGGCCGGGAATTCGTCGACTGGATCCGGTACCGAGGAGATCTGCC  
GCC**CGATCGCC**

ATGGGACCGGGACAGGCAGGGGGCGCGCTCCTGCTGCGGCTGCTAATGCTAGTTCAAGGTATTTGAATT  
GTCTGGCGTATAATGTTGGCCTCCAGGAGCGAAAATATTTCCGGGCCTCAAGTGAACAGTTTGGGTA  
TTCAGTACAGCAGCTTACGAACCCACAAGGCACTGGCTACTGGTTGGTTCACCGTGGAGTGGCTCCCT  
GAGAACCGAATGGGAGATGTGTACAAGTGCCCTGTGGACCTACCCACTGCCACCTGTGAAAAGCTGAATC  
TGCAAAATTCAGCAAGCATCTCAAATGTTACCGAGATAAAGACCAACATGAGCCTGGGATTGACCCTCAC  
CAGGAATCCGGGGACCGGAGGCTTTCTAACCTGTGGTCCCTCTCTGGGCACATCAGTGTGGAAATCAGTAT  
TATGCAACTGGGATCTGTTCTGATGTTAGTCCAGACTTTTCAGTTCCTTGACCAGCTTTTCACCTGCAGTTC  
AGGCTTGCCCTTCCCTCGTGGATGTTGTAGTTGTATGTGATGAATCAAACAGTATTTATCCTTGGGAAGC  
AGTAAAGAAGCTTTTGGTAAAGTTGTGACAGGCTGGATATAGGACCTAAAAGACACAGGTGGCGTTA  
ATTCATATGCCAATGAGCCGAGAATTATTTAACTTGAACGATTTTCAAACCAAGAGGATATGGTCC  
AGGCCACATCTGAGACCGCCAACATGGTGGGGACCTCACAACACCTTCAGAGCTATCGAATTCGCAAG  
AGACTACGCTTATTCACAGACTTCTGGCGGGCGCCGGGTGCTACAAAAGTCATGGTAGTTGTGACCGAT  
GGCGAGTCCCATGATGGGTGCAAGCTGAAAAGTGTGATCCAGCAATGCAATGATGACGAGATGAGGT  
TCGGCATAGCAGTTCTTGGGTATTTAAACAGAAATGCTCTTGATACTAAAAATTTAATCAAAGAAATAAA  
AGCAATTGCTAGTACTCCAACCGAGAGATACTTTTCAATGTGGCCGACGAAGCGCTCTTCTGGAGAAG  
GCTGGAAGTCTAGGGGAGCAAAATATTCAGCATTGAAGGCACTGTTCAAGGAGGAGACAAGTCCAGATGG  
AAATGGCACAAGTTGGATTAGTGCAGATTACGCTCCTCAAAATGATATTCTGATGTTAGGTGCAGTGGG  
GGCTTTTGACTGGAGTGGAACTTTGTCCAGGAGACATCTCACAAGCCCGTATCTTTCTAAACAAGCC  
TTTGACCAGGTTCTGCAGGATAGAAACCACAGTTCGTTTTTAGGTTACTCTGTGGCTGCAATTTCTACTG  
AAGACGGTGTCCATTTTGTGCTGGTCTCCTCGAGCAAATTAAGTGGCCAGATAGTGTGTACACCGT  
TAAACAAGCAAGGCAATGTGACCGTGATTAGTCTCACAGAGGGGACCAGATTGGCTCCTATTTTGGCAGT



[View online »](#)

GTGCTGTGCTCAGTTGATGTAGATAAAGACACCATTACAGACGTGCTCCTGGTAGGTGCTCCTACATACA  
TGAACGACCTCAAGAAAGAAGAGGGAAAAGTCTACCTATTTACCATCACAAAGGGCATCTTGAATCAGCA  
CCAGTTTCTTGAAGGGCCAGAAGGCACTGGAAATGCTCGGTTTGGTTCAGCAATTGCAGCCCTGTCAGAC  
ATCAACATGGATGGCTTTAATGATGTGATTGTCGGTTCACCTGTAGAGAATGAGAAGCTCTGGAGCTGTGT  
ACATTTACAATGGTCACCAGGGTACCATTTCGCACCAAGTACTCCCAGAAAATCCTTGGGTCCAATGGAGC  
CTTTAGGAGACATCTCCAGTTCTTTGGAAGTCCCTGGATGGCTATGGTATTTAAATGGGGATTCATC  
ACTGATGTATCCATTGGTGTCTTTGGGGCAAGTGATTCAACTCTGGTCACAAAGCATTGCTGACGTGGCCA  
TAGAAGCTTTGTTCACTCCAGACAAAATCACTTTGCTCAACAAGGATGCTAAGATAACCCTAAAGCTCTG  
CTTCAGAGCAGAGTTTAGACCTGCTGGGCAAAAACAATCAAGTAGCCATCCTGTTTAAATGACGCTTGAT  
GCGGACGGACATTCATCCAGGGTAACCTCCAGGGGGTGTTCAGAGAAAACAGTGAGCGATTCTTGCAGA  
AGAATATGGTGGTAAACGAAGTGCAGAAGTGTCTGAGCACCACATTAGCATACAGAAGCCCTCTGATGT  
TGTCAACCCTTTGGATCTGCGTGTGGACATCAGTTTGGAAAACCCAGGCACTAGCCCTGCCCTCGAAGCC  
TATTCTGAAACTGTCAAAGTCTTCAGTATCCCTTTCTATAAGGAGTGTGGCAGCGATGGAATTTGCATCT  
CTGACCTGATCCTGGATGTCCAACAGCTGCCAGCCATTCAAACCTCAATCCTTTATTGTGAGTAAACAAA  
CAAGAGGTTAACATTTTCAGTCATCCTGAAAAACAGAGGGGAAAGTGCATACAACACTGTGGTCTGGCC  
GAGTTTTCTGAGAACTGTTTTTTGCTTCTTCTCCATGCCGGTGCATGGAACAGAAAGTAACATGTGAGG  
TTGGTTATCGCAGAAATCTGTTACCTGTGATGTGGGATACCCTGCCTTAAAGAGTGAACAGCAGGTGAC  
TTTTACCATTAACCTTCGACTTTAATCTTCAAACCTCCAGAACCAGGCGGCCATCAATTTCCAAGCCTTC  
AGTGAGAGCCAAGAAACAAACAAAGCAGACAATTCGGTCACTCAGTCTCACGATTCCTCTCCTGTATGATGCCG  
AACTTCACTTAACCCGATCCACCAACATCAACTTCTATGAGATCTCTTCGGATGAGAACGCTCCTTCTGT  
CATCAAGAGTGTGAAGATATTGGTCTAAATTCATCTTCTCCCTCAAGGTAACAGCCGGAAGTGCCCA  
GTGAGCATGGCATTGGTGACTATCCACATTCTCAGTACACCAAGGAAAAGAACCCACTCCTGTATCTGA  
CTGGGATACAAACAGACCAGGCTGGCGACATCAGCTGCACAGCAGAAATAAATCCACTCAAGCTACCACA  
CACCGCCCTTCTGTATCTTTCAAGAATGAAAACCTCCGGCATAAGGAAAGAAATTGGACTGCAGAACCACT  
TCTGCAGTAACATCACCTGCTGGCTGAAAGACCTTCACATGAAAGCAGAGTACTTCATCAATGTGACAA  
CCAGAGTTTGAACAGGACCTTTGCTGCTTCGACTTTCCAGACTGTGCAGCTGACAGCAGCGGCAGAGAT  
CGATACACATAACCCTCAGCTCTTCGTGATTGAGGAAAATGCTGTACGATTCCTCATGATAATGAAA  
CCCACGGAGAAAGCAGAAGTACCGACAGGGTTATCATAGGCAGCATAATTGCGGGAATCCTTTTGCTGT  
TGGCTATGACTGCAGTTTGTGGAAGCTCGCTTCTTCAAAGACAATAAAGAAAATGGGCCAAAATCC  
AGATGAGATGGATGAGACCACAGAACTCAACAGC

ACGCGTACGCGGCCGCTCGAG – GFP Tag – GTTTAA

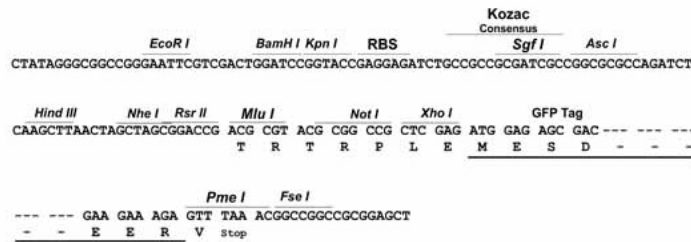
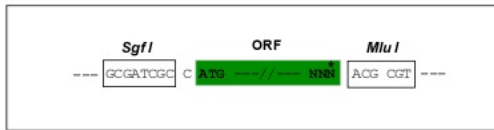
Protein Sequence: >MG211760 representing NM\_008396  
 Red=Cloning site Green=Tags(s)

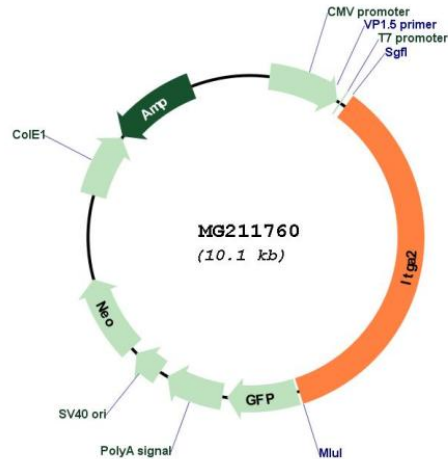
MGPGQAGGALLRLMLVQGILNCLAYNVGLPGAKIFSGPSSEQFGYSVQQLTNPQGNWLLVGGSPWGGFP  
 ENRMGDVYKCPVDLPTATCEKLNQNSASISNVTEIKTNMSLGLTLTRNPGTGGFLTCGPLWAHQCGNQY  
 YATGICSDVSPDFQFLTSPSPAVQACPSLVDVVVVCDESNSIYPWEAVKNFLVKFVTGLDIGPKKTQVAL  
 IQYANEPRIIFNLNDFETKEDMVQATSETRQHGGDLTNTFRAIEFARDYAYSQTSGGRPGATKVMVVVTD  
 GESHDGSKLKTVIQQCNDDEILRFGIAVLGYLNRNALDTKNLIKEIKAIASTPTERYFFNVADEAALLEK  
 AGTLGEQIFSIIEGTVQGGDNFQMEMAQVGFSAFYAPQNDILMLGAVGAFDWSGTLVQETSHKPVIFPKQA  
 FDQVLQDRNHSSFLGYSVAAISTEDGVHVFAGAPRANYTGQIVLYSVNKQGNVTVIQSHRGDQIGSYFGS  
 VLCSVDVDKDTITDVLLVGAPTYMNDLKKEEGKYYLFTITKGILNQHQFLEGPEGTGNARFGSAIAALSD  
 INMDGFNDVIVGSPVENENSGAVYIYNGHQGTIRTKYSQKILGSNGAFRRHLQFFGRSLDGYGDLNGDSI  
 TDVSIQALGQVIQLWSQSIADVAIEALFTPKITLLNKDAKITLKLCFRAEFRPAGQNNQVAILFNMTLD  
 ADGHSSRVTSRQVFRNSERFLQKNMVVNEVQKCSEHHISIQKPSDVVNPDLRVDISLENPGTSPALEA  
 YSETVKVFSIPFYKECGSDGICISDLILDVQQLPAIQTQSFIVSNQNKRLTF SVILKNRGE SAYNTVVLA  
 EFSENLFFASFMPVDGTEVTCEVGSSQKSVTCVGVGYPALKSEQQVTFITNDFNLQNLQNAAINFQAF  
 SESQETNKADNSVSLTIPLLYDAELHLTRSTNINFYEISSDENAPSVIKSVEDIGPKFIFSLKVTAGSAP  
 VSMALVTIHIPQYTKENPLLYLTGIQTDQAGDISCTAEINPLKLPHTAPSVSFKNFENFRHTKELDCRRT  
 SCSNITCWLKDLHMAEYF INVTRVWNRFTAASFQTQVQLTAAAEIDTHNPQLFVIEENAVTIPLMIMK  
 PTEKAEVPTGVIIGSIIAGILLLLAMTAGLWKLGFVKRQYKMGQNPDEMDETTELNS

TRTRPLE - GFP Tag - V

Restriction Sites: SgfI-MluI  
 Cloning Scheme:

Cloning sites used for ORF Shuttling:



**Plasmid Map:**


**ACCN:** NM\_008396

**ORF Size:** 3534 bp

**OTI Disclaimer:** The molecular sequence of this clone aligns with the gene accession number as a point of reference only. However, individual transcript sequences of the same gene can differ through naturally occurring variations (e.g. polymorphisms), each with its own valid existence. This clone is substantially in agreement with the reference, but a complete review of all prevailing variants is recommended prior to use. [More info](#)

**OTI Annotation:** This clone was engineered to express the complete ORF with an expression tag. Expression varies depending on the nature of the gene.

**Components:** The ORF clone is ion-exchange column purified and shipped in a 2D barcoded Matrix tube containing 10ug of transfection-ready, dried plasmid DNA (reconstitute with 100 ul of water).

**Reconstitution Method:**

1. Centrifuge at 5,000xg for 5min.
2. Carefully open the tube and add 100ul of sterile water to dissolve the DNA.
3. Close the tube and incubate for 10 minutes at room temperature.
4. Briefly vortex the tube and then do a quick spin (less than 5000xg) to concentrate the liquid at the bottom.
5. Store the suspended plasmid at -20°C. The DNA is stable for at least one year from date of shipping when stored at -20°C.

**RefSeq:** [NM\\_008396.3](#)

**RefSeq Size:** 4235 bp

**RefSeq ORF:** 3537 bp

**Locus ID:** 16398

**UniProt ID:** [Q62469](#)

**Cytogenetics:** 13 64.61 cM

**Gene Summary:**

Integrin alpha-2/beta-1 is a collagen receptor, being responsible for adhesion of platelets and other cells to collagens, modulation of collagen and collagenase gene expression, force generation and organization of newly synthesized extracellular matrix. It is also a receptor for laminins, collagen C-propeptides and E-cadherin. Mice homozygous for a null mutation in the alpha-2 die very early in embryogenesis.[UniProtKB/Swiss-Prot Function]