

Product datasheet for **MG211755**

Atn1 (BC050920) Mouse Tagged ORF Clone

Product data:

Product Type:	Expression Plasmids
Product Name:	Atn1 (BC050920) Mouse Tagged ORF Clone
Tag:	TurboGFP
Symbol:	Atn1
Synonyms:	atrophin-1, Atr1
Mammalian Cell Selection:	Neomycin
Vector:	pCMV6-AC-GFP (PS100010)
E. coli Selection:	Ampicillin (100 ug/mL)
ORF Nucleotide Sequence:	>MG211755 representing BC050920 Red=Cloning site Blue=ORF Green=Tags(s)

TTTTGTAATACGACTCACTATAGGGCGGCCGGGAATTCGTCGACTGGATCCGGTACCGAGGAGATCTGCC
GCC**CGATCGCC**

ATGAAGACACGACAGAATAAAGACTCGATGTCAATGAGGAGTGGACGGAAGAAAGAGGCCCCCGGGCCCC
GGGAAGAGCTGAGATCAAGGGGCCGGCCCTCCCCTGGAGGGGTGACGACATCCAGCAGTGTGGCAAAGC
TGAGAAGTCCAGGCAGACAGCCAAGAAGGCCCGGATAGAGGAGCCCTCTGCCCAAAGGCCAGCAAGCAG
GGCCGGAGCGAGGAGATCTCAGAGAGTGAAGCGAGGAGACCAGTGCGCCAAAAAGACCAAAACCGAGC
AGGAGCTCCCTCGCCCGAGTCTCCCTCGGATCTGGACAGCTTGGATGGGCGCAGCATTAAACGATGACGG
CAGCAGCGACCCTAGAGATATAGACCAGGACAACCGAAGCACATCCCCCAGCATCTACAGCCCGGGCAGC
GTGGAAAATGACTCGGACTCATCTCTGGCCTGTCCCAGGGCCCCGCCGCCCTACCACCCACCTCCAC
TCTTCCCTCCTTCCCCTCCACCACCAGACAGCACTCCCCGACAGCCAGAGTCTGGCTTTGAACCTCATCC
TTCTGTGCCGCTACTGGATATCATGCTCCGATGGAGCCCCCACATCGAGATTATCCAGGGCCCCACCA
CCTGGAGTCTCTCCACACCCACAGCTCTACCCTGGGAATGCTAGTGGAGGTGTTTTATCTGGACCCC
CCATGGGTCCCAAAGGGGAGCCGCTGCCTCCTCAGTGGTGCCCTAGCGGAGGCAAGCAACACCCCC
ACCCACTACCCCAATTCCAATATCAAGTCTGGGGCCAGTGGTGTCTCCAGCAAAGCCACCCAGTGTCT
CCAGTGGGTGGTGGGAGCTTACCTTCTGCACCACCAGCTTCTTCCCCCATGTGACACCAAACTCTGC
CTCCTCCACTGCCCTGAGACCCCTCAACAATGCCTCAGCCTCTCCTCCTGGCATGGGGGCTCAGCCAAT
CCCTGGGCATCTGCCCTCTCCCCATGCCATGGGGCAGGGCATGAGTGGACTTCTCCTGGCCAGAGAAG
GGTCCAACCTGGCCCTTCTCCCCACCCTTTGCCCCAGCTTCTCCTCTGCCCTGGGCTCCATGC
GATATCCATATTCATCTCCAGTAGCTCTGCCGAGCCTTCTAGTTCTCCTCCTCCTCTGCCTCCCA
GTACCCTGCTTCCAGGCCCTGCCAGTTATCCTATTCTTCCCCCACCACCTAGTATGTCTGTCTCT
AATCAGCCACCAAGTACACCCAGCCTTCTCTCCATCCCAAGCTGTGTGGAGCCAGGGTCCACCTCCTC
CTCCTCCCTATGGCCGCTCTTGGCCAACAACAACCCATCCAGGCCCTTCCCTCCTACTGGGGTCA
ATCTACAGCCACCCAGCAGCCCTACACATCACCATCACCAGCAGCAGCCACAGCAACAACATCATCAT



[View online »](#)

GGAAACTCTGGGCCCCCTCCACCCGGAGCGTATCCTCACCTCTAGAGAGCAGTAACTCCCATCATGCAC
ACCCTTACAACATGTACCCTCCCTGGGGTCTTTAAGGCCCTACCCCCAGGGCCAGCACACCTGCCTCC
ACCTCATGGCCAGGTGTCTATAACCAAGCAGGTCCCAATGGTCCCCCAGTTTCTTCTTCCAACCTTTCC
GGGTCTTCTCTCAAGCCTCCTATTCATGTTACACCCCTCTTCATCCCAGGGCCCCCAAGGAGCATCCT
ACCCCTTCCCACCAGTCCCTCCAGTCACCACCTCCTCAGTACCCTTTTCCACTGTCATCGCCACCGTGCC
TTCTCGCCAGCAGGCTACAAAACAGCTTCGCCACCTGGGCCCCCTCAGTACAGCAAGAGAGCCCCATCC
CCAGGGTCTACAAGACAGCCACCCCGCTGGATACAAACCGGGGTACCACCTCCTTCCAGAACAGGGA
CCCCACCCGGCTATCGAGGCACCTCTCCGCCAGCAGGCCAGGGACCTTCAAACCAAGTTACCCGACCGT
GGGGCCGGGGCCCTGCCACCCGCGGGGCTTCAAGTTTGTATCTCTGCCCTCCGCCACCTGCGGCCCG
ACTACAGGGCCGCCCTGACCGCACGCAGATCAAACAGGAGCCGGCGGAAGATATGAACCTCCCGAGA
GTCCGGTGCCTCCGGCCCGCAGCCCTCGCCCCCTCCAAAGTGGTGGACGTGCCAGCCATGCCAGCCA
GTCAGCCAGGTTCAATAAGCACTTGACCGCGGCTTCAACTCGTGCAGCGCAGCAGCTGTACTTCGTG
CCGCTGGAGGGCTCCAAGCTGGCAAGAAGCGCGGACCTGGTGGAGAAAGTGCAGCGCAGGCGGAGC
AGCGCGCGCGGAGGAGAAAGAGCGCGAGCGGAGCGGAAACGCGAAAAGGAGCGCGAGCGGAGAAAGA
GCGCGAGCTGGAGCGCAGTGTGAAACTGGCCAGGAGGGCGTGTCCAGTGGAGTGCCCATCTCTGGGT
CCAGTGCCCATCGGCCCTCCTTTGAGCCTGGCAGCGCTGTGGTACAGTGCCCCCTTACCTGGGTCTG
ATACTCCGGCCTTGCCTACTCTCAGTGAATACGCCGACCTCATGTATGTCTCCTGGCAATCGAACCA
CCCATTCTATGTGCCCTTGGGGCAGTGGACCCGGGGTCTGGGTTACAATGTCCAGCCCTGTACAGC
AGCGACCCAGCTGCCGAGAACGGGAGCGGGAAGCCCGTGAACGTGACCTCCGTGACCGGCTCAAGCCTG
GCTTTGAGGTGAAACCTAGTGAGCTGGAACCCCTACATGGGGTCCCGGGCCAGGCTGGATCCCTTCCC
CCGACACGGGGCCCTGGCTCTACAGCCCGGGCCACCTGGCCTGCATCCTTTCCCTTTTTCATCCGAGCCTG
GGGCCCCTGGAACGAGAACGGCTAGCGCTGGCAGCTGGCCAGCCTTGGTCTGACATGTCTTATGCTG
AGCGGTTGGCAGCTGAAAGGCAGCATGCAGAAAGGGTGGCAGCCCTGGCAATGATCCACTAGCCGGCT
GCAGATGCTCAACGTGACTCCCCATCACCACCAGCACTCCACATCCACTCTCACCTTCACTGCACCAG
CAGGATGTATCCACGCAGCCTCTGCCTCGGTGCCCTCTCATTGACCCCTGGCCTCAGGGTCTCACC
TTACCCGGATCCCTACCAGCTGGGACCTCCCCAACCCCTTCTTCTCACCTCTGCACGAGAACGA
AGTTCTTCGTACCAGCTTTTTGCTGCCCTTACCAGGACCTGCCGGCCTCCCTTCTGCTCCAATGTCA
GCGGCTCATCAGCTGCAGGCCATGCACGCGCAGTCAGCTGAGCTGCAGCGCTTGGCGCTGGAACAGCAGC
AGTGGCTACATGCTCATACCCATTGCACAGCGTGCCACTACCTGCCAGGAAGACTACTACAGTCACT
GAAGAAGGAGAGTGACAAGCCGCTG

ACGCGTACGCGGCCGCTCGAG - GFP Tag - GTTTAA

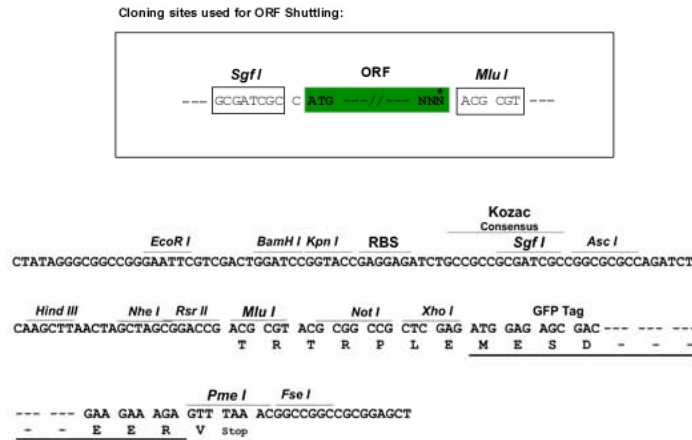
Protein Sequence: >MG211755 representing BC050920
 Red=Cloning site Green=Tags(s)

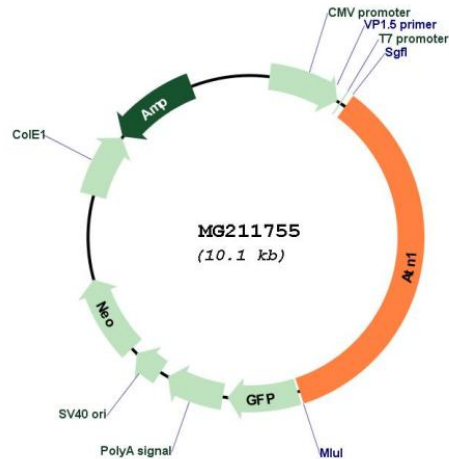
```

MKTRQNKDSMSMRSGRKKKEAPGPREELRSRGRASPGGVSTSSSDGKAESRQTAKKARIEEPSAPKASKQ
GRSEEI SESESEETSAPKKTKTEQELPRPQSPDLDSLGRSINDDGSSDPRDIDQDNRSTSPSIYSPGS
VENDSDSSSGLSQGPARYHPPPLFPPSPPPDSTPRQPESGFEPHPSVPPTGYHAPMEPPTSR LFQGGP
PGAPPTHQLYPGNASGGVLSGPPMPGPKGAAASSVGVAPSGGKQHPPPTTPIPISSSGASGAPPAPPSA
PVGGSLSLPSAPPASFPHTPNLPPPPALRPLNNASASPPGMGAQPIPGHLPSPHAMQGMSGLPPGPEK
GPTLAPSPHPLPPASSAPGPPMRYPYSSSSSSAAASSSSSSSSASQYPASQALPSYPHSFPPTSMSVS
NQPKYTPSLPSQAVWSQGPPPPPYGRLLANNTHPGFPPTGGQSTAHPAAPTHHHHQQPQQQHHH
GNSGPPPPGAYPHPLESSNSHHAHPYNMPSLGSRLPYPPGPAHLPPPHGQVSYNQAGPNPPVSSNS
GSSSQASYSCSHPSSSQGPQASYPFPVPPVTSSATLSTVIATVASSPAGYKTASPPGPPQYSKRAPS
PGSYKTATPPGYKPGSPSFRTGTPPGYRGTSPAGPGTFKPGSPTVGGPLPPAGPSSLSSLPPPPAAP
TTGPPLTATQIKQEPAAEYEPPESPVPPARSPSPPKVVDVPSHASQSARFNKHLDRGFNSCARSDLYFV
PLEGSKLAKKRADLVEKVRREAEQRAREEKEREREREREKEREREREKERSVKLAQEGRAPVECP SLG
PVPHRPPFEPGS AVATVPPYLGPDTPALRTLSEYARPHVMSPGNRNHPFYVPLGAVDPGLLGYNVPALYS
SDPAAREREREARERDLRDLKPGFEVKPSELEPLHGVPGPGLDPFPRHGLALQPGPGLHPFPFHPSL
GPLERERLALAAGPALRPDMSYAERLAERQHAERVAALGNDPLARLQMLNVTPHHHQHSHIHLHLHQ
QDAIHAASASVHPLIDPLASGSHLTRIPYPAGTLPNPLLPHPLHENEVLRHQLFAAPYRDLPASLSAPMS
AAHQLQAMHAQSAELQRLALEQQQWLHAHHPLHSVPLPAQEDYYSHLKKESDKPL
  
```

TRTRPLE - GFP Tag - V

Restriction Sites: SgfI-MluI
Cloning Scheme:



Plasmid Map:


ACCN: BC050920

ORF Size: 3527 bp

OTI Disclaimer: The molecular sequence of this clone aligns with the gene accession number as a point of reference only. However, individual transcript sequences of the same gene can differ through naturally occurring variations (e.g. polymorphisms), each with its own valid existence. This clone is substantially in agreement with the reference, but a complete review of all prevailing variants is recommended prior to use. [More info](#)

OTI Annotation: This clone was engineered to express the complete ORF with an expression tag. Expression varies depending on the nature of the gene.

Components: The ORF clone is ion-exchange column purified and shipped in a 2D barcoded Matrix tube containing 10ug of transfection-ready, dried plasmid DNA (reconstitute with 100 ul of water).

Reconstitution Method:

1. Centrifuge at 5,000xg for 5min.
2. Carefully open the tube and add 100ul of sterile water to dissolve the DNA.
3. Close the tube and incubate for 10 minutes at room temperature.
4. Briefly vortex the tube and then do a quick spin (less than 5000xg) to concentrate the liquid at the bottom.
5. Store the suspended plasmid at -20°C. The DNA is stable for at least one year from date of shipping when stored at -20°C.

RefSeq: [BC050920](#), [AAH50920](#)

RefSeq Size: 4421 bp

RefSeq ORF: 3527 bp

Locus ID: 13498

Cytogenetics: 6 59.17 cM

Gene Summary:

Transcriptional corepressor. Corepressor of MTG8 transcriptional repression. Has some intrinsic repression activity which is independent of the number of the poly-Q repeats (By similarity). Recruits NR2E1 to repress transcription. Promotes vascular smooth cell (VSMC) migration and orientation.[UniProtKB/Swiss-Prot Function]