

## Product datasheet for **MG211741**

### Lamb3 (NM\_008484) Mouse Tagged ORF Clone

#### Product data:

Product Type:	Expression Plasmids
Product Name:	Lamb3 (NM_008484) Mouse Tagged ORF Clone
Tag:	TurboGFP
Symbol:	Lamb3
Mammalian Cell Selection:	Neomycin
Vector:	pCMV6-AC-GFP (PS100010)
E. coli Selection:	Ampicillin (100 ug/mL)
ORF Nucleotide Sequence:	>MG211741 representing NM_008484 Red=Cloning site Blue=ORF Green=Tags(s)

TTTTGTAATACGACTCACTATAGGGCGGCCGGAATTCGTCGACTGGATCCGGTACCGAGGAGATCTGCC  
GCC**CGATCGCC**

ATGACAGCATTTTTCTCTGTGGCTTGCCTTGCCTGGCTTCTGTGTGCCAGCAAGCCTGCTCCCGAG  
GGGCTGTTATCCACCTGTGGGGACTTGCTCATTGGAAGGACTCAGCTTCTTCGAGCCTCATCTACCTG  
TGGATTGACCAACCTGAGACCTATTGCACCCAATATGGACAGTGGCAGATGAAATGCTGCAAGTGTGAC  
TCCAGGCTGCCTCGAAATTACAACAGTCACCGAGTGGAGAATGTCGCATCGTCTTCAGGCCCATGCGCT  
GGTGGCAGTCACAGAATGATGTGAGCCCTGTCTCTGACAGTGGACCTAGACAAGAGGATGCAGCTTCA  
GGACATCATGATGGATTTAAGGGTCTCACACCAGCTGGCATGTTGATTGAGCGCTCTTCTGACTTTGGC  
AAGACATGGAGGGTGTACCAGTACCTGGCGACAGACTGTGCCAGCACCTTTCCCAAGTCCACCAGGGCC  
AGCCCAAGAACTGGCAGGACGTCCGGTCCGGCCCTTGTCCCAGAGGCCTAATGGGCATCTGACTGGGG  
AAAGGTCCAACCTAACCTTATGGATTTAGCATCAGCTATCCCTGCATCTCAAAGTAAAAAGATTCAAGAA  
CTTGGGGACATCACAACTTGAGAGTCACTTCACCAAGCTGGCCCTGTGCCCCAGAGGGGCTCCTATC  
CACCCAGCGCCTACTTTGCAGTGTACAGCTACGCTACAGGGGAGTTGCTTCTGTACGGACATGCCGA  
CCGCTGTGCCCTAATCCTGGAGGTTCTACCAGTGTGTCAGGTCAACAATGTCTGTGTCTGCCAGCAT  
AACACAGCTGGCCCAATTGTGACCGCTGTGCCCTTTCTACAACAACCGTCCATGGAGACTGCAGAGG  
GCCAGGACACCCACGAGTGCCAAAGGTGTGACTGCAATGGGCACTCAGAGACCTGCCACTTCGACCCAGC  
TGTGTTTGTGCCAGCCAGGGGACAAATGGAGGTGTGTGTGACAACCTGCCGGGACACACCAGGGCAAG  
AACTGCGAGCGCTGTGAGTACACTATTTCCGGAATAGACGACCCAGCGCTCCCATTTCATGAGACTTGTA  
TTCCCTGTGAGTGTGATCCAGATGGAGCAGTCCAGGGAGCTCCCTGTGACCGACTGACGGCCAGTGTGT  
GTGCAAAGAGTACGTGCAAGGAGAGCGCTGCGACCTTTGCAAGCCTGGCTTACCAGGGCTCACCTTCGCC  
AACCCGAAGGGTGCATGCCTGTGACTGCAGTATCTTAGGTGCCCGAAAGATATGCCTTGTGAGGAGG  
AAACCGGACGCTGCTTGTGTCTGCCAATGTAGTGGGCCCAAATGTGACCAAGTGTGCCCTTCCCAGTGC  
GAAGCTGGCCAGCGCCCTGGGCTGCGAGCCCTGTGCCTGTGACCCCTCGCAACTCCCTAACCTCCCACTG  
AACCAAGTTACAGGACAGTGTCTTGTCCGGGAAGGGTTTGGCGGCTCAGTGTAGTCTGACAGCCATCC  
GCCAGTGTCTGACCAGACCTATGGACAGTGGCCACAGGGTGGCGAGCTTGTGACTGTGACTTCAGAGG



[View online »](#)

AACAGAGGGTCTGGCTGTGACAAAGCCTCAGGCCGTTGCCTCTGCCGCCCTGGCTTTACCGGGCCCCG  
 TGTGACCAATGCCAACGAGGTCCTGTGACCGCTACCCAGTATGTGTGGCCTGCCACTCCTGCTCCAGG  
 CCTATGACACAGACCTCCAGGAGCAAGCTCGACGCCTTCACAGTCTCCGTAATGCCACCGAAGGCCTGTG  
 GACAGGGACAGGTCTGGAAGACCATGGCCTGGCTTCTCGTTGCTAGATGCCAAGAGCAAGATTGAGCAG  
 ATCAGACAGATTCTGGAAGGCCTTCTGTACAGAGCAGGATGTGGCTCAGGTGGCCAATGGCATCTTGT  
 CTATCAGGAGAACTCTTCAGGGCCTGCCCTGGACCTGCCCTTAGAGGAGGAGATGGAATCCTTCTGG  
 AGACCTGGGAACTAGACAGAAGCTTCAGTCCGCTCCTTATGTACCGAAGCAAGAAGGAGCAATTT  
 GAGAAGCTAAGCAGTGAAGACCTTCAGGAGCCTTCCGCATGCTGACCATGGCTTAGAGCAGTCCCTCC  
 GGGCTGCACAGCAAGTGTCTGACAGTCTAGCCTGCTGAGCCAGTTGAGGGACAGTCGCAGGGAAGCAGA  
 GGGCCTGGAGAGACAGGCTGGAGGAGGAGCACCAGGAGGAGTACAGTCTATGGCCCTGCGCTAGAAATG  
 GCTTCGCTGCCTGACTTGACACCCACCAACAAGCTTTGTGGCAGGTCTAGGCAGACAGCCTGTACTC  
 CAGGAGATTGCCCTGGAGAGCTGTGCTCAGGACAATGGTACAGCTTGTGGCTCTACTGCAGGGGAGC  
 CCTGCCAGAGCCAAAGGGGCTTCCACATGGCAGGGCGGTAGCTGAGCAGCTACGAACTTCAACACC  
 CAGCTCCAGCAGACCAGGCAATGATCAGGGCAGCCGAGGAAGCAGCATCAAGGGTCCAAGCCGATGCC  
 AGCGCCTTGAGACCCAGGTGAGTACCAGCCGCTTGTGATGGAGGAAGATGTCCAGCGCACAGGCTTCT  
 CATCCAACAGGTCGGGGCTTTCTCACAGATCCTGACACAGATGCAGCCACCATCCAACAGGTGACGAG  
 GCAGTGTGGCTCTCTGGCTGCCACAGACTCAGCCACAGTGTGCGCAAGATGAAAGAGATCCAGGCCA  
 TTGCGGCCAGGCTCCCTAATGTGGACTCAGTGTATCCCAGACCAACAAGACATCGCACGGGCCCGCAG  
 GCTCCAGGCTGAGGCTGAGCAGGCCAGAAGCCGAGCCACGCTGTGGAAGGGCAGGTAGATGATGTGGT  
 GGAACCTTCGGCAGGGCACCCTGGCTCTGCAGGAAGCTCAGGACACAATGCAGGGTACTGGCCGCTCTC  
 TTCGGCTCATCCAGAAAGGGTTGGTGAAGTTCAGCAGTCTTGTACCAGTGAAGGCTGGTGAAGG  
 CATGAAGAACAGATGAGTGGATTCTGGCAGGATGAAGGAGCTTCGCCGTGAGCCAGGAGGAGCAG  
 GCCCAGCAATGCAGCCCGCAGCTTGCAGGGTGCAGCCAGCAGGCAATGAATGCCAGGAGGGCT  
 TTAAGGACTTAAGCAAAAGTATACAGAGTTGAAGGACCGGCTGGGTGAGTCCCTGTGCTGGGGCAGCA  
 AGGCAATCGAATCCTGAGCATCAAGATGGAGGCAGAGGAGCTCTTGGGAGACCATGGAATGATGGAC  
 AAAATGAAAGACATGGAGTCAAGAGTCTCGAGGGAGTCAAGGCTATCATGCTGCGCTCTGCAGACCTGT  
 CGGGGCTGGAGAAGCGTGTGGAGCAGATCCGCAGTTACATCAATGGGCGAGTGTCTACTATGCCACCTG  
 CAAG

ACGCGTACGCGGCCGCTCGAG - GFP Tag - GTTTAA

**Protein Sequence:**

>MG211741 representing NM\_008484  
 Red=Cloning site Green=Tags(s)

MTAFFLLWLALPGFLCAQQACSRGACYPPVGDLLIGRTQLLRASSTCGLTKPETYCTQYQWQMKCKCD  
 SRLPRYNNSHRVENVASSGPMRWWQSQNDVSPVSLQLDLDKRMQLQDIMMDFKGLTPAGMLIERSDFG  
 KTWVRYQYLATDCASTFPQVHQGPKNWQDVRCRPLSQRPNHGLTGGKVQLNMDLASAIPASQSKKIQE  
 LGDITNLRVNF TKLAPVPQRGSYPPSAYFAVSQRLRLQGSCFCHGHADRCAPNPGGTTAVQVNNVCVQH  
 NTAGPNCDRCAPFYNNRPWRPAEQDTHCQRCDNCHSETCHFDPAVFAASQGTNGGVCDNCRDHTEGK  
 NCERCQLHYFRNRRPSAPIHETCIPCECDPDGAVQGAPCDRLTGQCVCKEYVQGERCDLCKPGFTGLTFA  
 NPKGCHACDCSILGARKDMPCEEETGRCLCLPNVVGPKDQCAPSHWKLASGLGCEPCACDPRNSLSSQC  
 NQFTGQCPCREGFGLTCSSAIRQCPDQTYGHVATGCRACDCDFRGTEGPGCDKASGRCLCRPGFTGPR  
 CDQCQRGHCDRYPVCVACHSCFQAYDLDLQEQARRLHSLRNATEGLWTGTGLEDHGLASRLLDASKIEQ  
 IRQILEGTSVTEQDVAQVANGILSIRRTLQGLPLDLPLEEEMESFSGDLGNLDRSFRLLLMYRSKKEQF  
 EKLSSDPGSAFRMLTMAYEQSSRAAQVSDSSLLSQLRDSRREAEGLERQAGGGTGAQMLALRLEM  
 ASLPDLTPTINKLCGRSRQTACTPGDCEGELCPQDNGTACGSHCRGALPRAKGAHFHMAGRVAEQLRNFT  
 QLQQTRMIRAAEEAASRVQADAQRLETVQVSTSRLLMEEDVQRTRLLIQQVRGFLTDPDTDAATIQQVSE  
 AVLALWLPDTSATVLRKMKIEQAIARLPNVDSVLSQTKQDIARARRLQAEAEQARSRAHAVEGQVDDVV  
 GNLRQGTVALQEAQDTMQGTGRSLRLIQERVGEVQQVLPVPAERLVKGMKEQMSGFARMKELRRQAQEEQ  
 AQAMQARQLAEGASQQAMNAQEGFKRLKQKYTELKDRLGQSPVLGEQGNRILSIKMEAEELFGETMEMMD  
 KMKDMESELLRGSQAIMLRADLSGLEKRVQIRSYINGRVLYYATCK

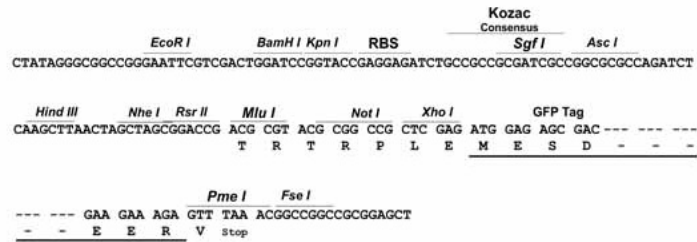
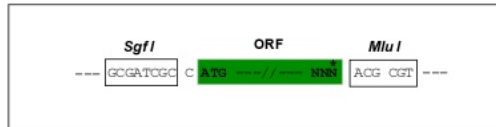
TRTRPLE - GFP Tag - V

Restriction Sites:

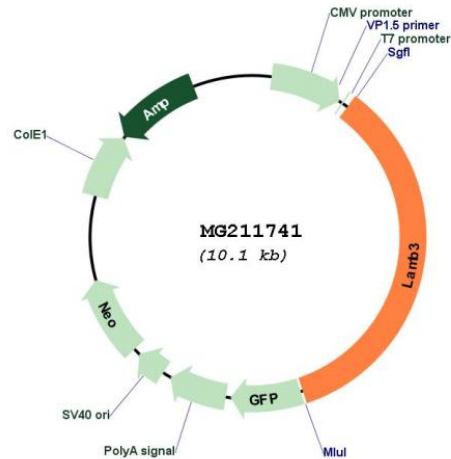
SgfI-MluI

Cloning Scheme:

Cloning sites used for ORF Shutting:



## Plasmid Map:



ACCN: NM\_008484

ORF Size: 3504 bp

**OTI Disclaimer:** The molecular sequence of this clone aligns with the gene accession number as a point of reference only. However, individual transcript sequences of the same gene can differ through naturally occurring variations (e.g. polymorphisms), each with its own valid existence. This clone is substantially in agreement with the reference, but a complete review of all prevailing variants is recommended prior to use. [More info](#)

**OTI Annotation:** This clone was engineered to express the complete ORF with an expression tag. Expression varies depending on the nature of the gene.

**Components:** The ORF clone is ion-exchange column purified and shipped in a 2D barcoded Matrix tube containing 10ug of transfection-ready, dried plasmid DNA (reconstitute with 100 ul of water).

**Reconstitution Method:**

1. Centrifuge at 5,000xg for 5min.
2. Carefully open the tube and add 100ul of sterile water to dissolve the DNA.
3. Close the tube and incubate for 10 minutes at room temperature.
4. Briefly vortex the tube and then do a quick spin (less than 5000xg) to concentrate the liquid at the bottom.
5. Store the suspended plasmid at -20°C. The DNA is stable for at least one year from date of shipping when stored at -20°C.

RefSeq: [NM\\_008484.2](#), [NP\\_032510.2](#)

RefSeq Size: 4055 bp

RefSeq ORF: 3507 bp

Locus ID: 16780

UniProt ID: [Q61087](#)

**Cytogenetics:** 1 97.71 cM

**Gene Summary:** Binding to cells via a high affinity receptor, laminin is thought to mediate the attachment, migration and organization of cells into tissues during embryonic development by interacting with other extracellular matrix components.[UniProtKB/Swiss-Prot Function]