

Product datasheet for **MG211738**

Polr2b (NM_153798) Mouse Tagged ORF Clone

Product data:

Product Type:	Expression Plasmids
Product Name:	Polr2b (NM_153798) Mouse Tagged ORF Clone
Tag:	TurboGFP
Symbol:	Polr2b
Synonyms:	Pol2rb; Rpb2; Rpb140
Mammalian Cell Selection:	Neomycin
Vector:	pCMV6-AC-GFP (PS100010)
E. coli Selection:	Ampicillin (100 ug/mL)
ORF Nucleotide Sequence:	>MG211738 representing NM_153798 Red=Cloning site Blue=ORF Green=Tags(s)

TTTTGTAATACGACTCACTATAGGGCGGCCGGAATTCGTCGACTGGATCCGGTACCGAGGAGATCTGCC
GCC**CGATCGCC**

ATGTATGACGCCGACGAGGACATGCAATATGATGAAGACGACGATGAGATCACTCCGGATCTGTGGCAGG
AAGCATGCTGGATCGTGATCAGTTCTTACTTTGATGAGAAAGGCTTGGTCAGACAACAGCTGGATTCCCT
TGATGAGTTTATTCAGATGTCTGTTCAAAGAATTGTGGAAGATGCACCACCGATTGACCTACAGGCCGAA
GCTCAGCAGCCAGTGGAGAAGTTGAAGAGCCCAAGATATTTACTGAAGTTTGAACAAATTTACCTCT
CCAAACCTACTCATTGGGAAAGAGATGGTGCCCTTCGCAATGATGCCAAATGAAGCCAGGTTAAGAAA
TCTCACGTATTCTGCTCCGCTTTACGTTGACATAACAAAGACAGTCATTAAGAAGGTGAAGAACAGCTG
CAGACTCAGCACCAGAAAACGTTTCATAGGAAAATCCAATTATGCTGCGCTCCACCTACTGCTGTAA
ATGGCTAACAGATCGTGACCTGTGTGAGCTGAATGAGTGCCTTTGGATCCCGGTGGCTATTTTATTAT
CAATGGATCAGAAAAGGTTCTGATAGCTCAAGAGAAAAATGGCAACAAACACAGCTATGTGTTTGCCAAA
AAGGATTCCAAGTATGCCTATACAGGAGAATGTCGCTCATGCCTGGAGAATTTCTCCGACCCACAGTA
CTATATGGGTTAGCATGCTGGCCAGAGGAGGACAGGGTCAAAGAAGAGTGTCTATGGCCAGCGCATCGT
GGCAACGTTACCATACATCAAGCAAGAAGTTCCATCATCATTGTGTTCCAGAGCACTAGGCTTTGTGCT
GATAGAGATATTTAGAACACATCATTATGACTTCGAGGATCCAGAGATGATGGAAATGGTTAAACCAT
CTCTCGATGAAGCGTTTGCATCCAAGAGCAGAATGTTGCCTTAACTTCATCGGTTCAAGAGGGGCAAA
GCCTGGTGTACTAAGGAGAAAAGAATTAATATGCAAAAAGAAGTCTTACAGAAAAGAAATGCTCCCTCAC
GTTGGTGTGAGTATTTCTGTGAGACAAAAAGGCCTATTTCTTGGGATATAGGTTGCTT
TAGCAGCCCTAGGCAGAAGAGAACTAGACGACAGAGATCACTATGGCAACAAGAGATTGGATCTTGCTGG
GCCTCTGCTTGCATTCTTATTAGAGGCATGTTAAGAATTTGCTGAAAGAAGTACGAATCTATGCGCAG
AAGTTTATTGATCGCGGAAGGATTTAACTTAGAGCTGGCAATCAAGACAAGGATCATATCTGATGGC
TAAATACTCTTTAGCCACTGGGAACTGGGGTGACCAGAAGAAAGCTCATCAAGCCAGAGCTGGAGTATC
CCAGGTATTGAACCGCTGACGTTTGCATCTACTTTTCTCACCTGCGTCTAACTCTCCTATTGGC



AGAGATGGCAAGCTAGCGAAGCCAGACAGTTGCATAATACCTTGTGGGAATGGTGTGCTCCTGCTGAAA
CTCCAGAGGGCCATGCTGTAGGGCTTGTGAAGAATTTAGCCCTGATGGCTTATATTTTCAGTTGGATCTCA
ACCCTCTCCAATTTTGAATTTTGAAGAATGGAGCATGGAAAAATTTAGAAGAAATTTCTCCTGCAGCT
ATTGCTGATGCAACCAAGATTTTGTAAATGGCTGCTGGGTTGGAATCCATAAAGACCCCGAACCACTCA
TGAACACGCTAAGGAAGTTACGGCGGCAGATGGACATCATTGTATCCGAAGTTTCTATGATCAGAGATAT
TCGAGAGCGGGAGATTCGGATCTATACAGATGCAGGCCGTATTTGTAGACCCCTTCTGATTGTGGAAAAG
CAGAAGCTGCTTTTGAAGAAGAGACACATTGACCAGTTGAAAGAGAGAGAATATAACAACATACAGTTGGC
AGGATCTGGTAGCCAGTGGGGTAGTAGAGTATATTGATACCCTGGAAGAGGAGACCGTGATGCTTGCAAT
GACTCCAGATGATTTGCAGGAGAAGGAAGTAGCTTATTGTTCTACCTACACCCACTGTGAGATTCACCCA
TCAATGATTCTTGGAGTCTGTGCATCTATTATTCCTTTTCTGATCATAACCAGTCCCCTAGAAACACAT
ACCAGTCTGCTATGGGCAAGCAGGCTATGGGAGTTTATATCACCAACTTCCATGTGCGGATGGACACCTT
GGCCCATGTTCTCTACTATCCTCAGAAACCCCTTGTGACTACACGGTCTATGGAATATCTACGATTCAGA
GAGCTGCCAGCAGGAATCAACTCAATTGTGCCATTGCATCTACACGGGCTATAATCAAGAAGACTCTG
TTATCATGAATCGTTCAGCTGTGGATCGAGGCTTTTTTCAGGTCTGTTTTCTACCGATCATACAAAGAACA
AGAGTCTAAAAAGGATTTGATCAAGAAGAAGTGTGAGAAGCCTACACGTGAGACATGCCAGGGGATG
AGGCATGCCATCTATGAAAAGTTGGACGATGACGGTTTGATAGCTCCGGGGGTCGAGTCTCCGGAGATG
ACGTTATTATCGGCAAGACAGTACCTTACCCGAGAACGAGGATGAGCTGGAGAGACCAACAGGCGCTA
CACCAAGAGGGACTGCAGCACTTCTCAGAACTAGTGAGACGGGCATCGTGGACCAGGTCATGGTCACT
CTCAACCAGGAAGGATATAAATTTTGTAAAATAAGGGTGCCTCTGTTAGAAATCCCGCAGATTGGAGACA
AATTTGCTAGCCGACATGGTCAGAAGGGAACTTGTGGTATTAGTATAGACAAGAGGACATGCCGTTTAC
TTGCGAAGGCATAACTCCTGACATCATATAAACCCACGCCATCCCCTCCCGGATGACAATTGGTCAC
TTGATCGAATGTCTCAAGGGAAGTCTCTGCCAACAAGGGTAAATGGTGACGCTACTCCATTTAATG
ATGCTGTCAATGTGAGAAGATTTCTAATCTTTTGTCTGACTATGGCTACCATCTCAGAGGGAACGAGGT
GCTCTACAATGGATTACTGGACGAAAAATCACATCACAGATTTTTATTGGCCCACTTACTACCAGCGT
TTGAAGCATATGGTGGATGACAAAATTCATTCTCGTGCTAGGGGACCCATTGAGATTCTTAACAGACAGC
CCATGGAGGGCAGATCTCGTGATGGTGGCCTGCGCTTCGGAGAAATGGAACGAGACTGTCAAATTGCCCA
CGGTGCAGCACAGTTTCTAAGAGAAAGACTGTTTGAAGCATCAGATCCGTATCAGGTTTATGTCTGTAAT
CTTTGTGGAATAATGGCAATTGCTAACACGAGGACTCATACATATGAGTGCAGGGGATGCCGAATAAAA
CCCAGATTTCTTGGTGCGAATGCCGTACGCGTGAAGCTGTTGTTCCAGGAGCTCATGTCCATGAGCAT
CGCACCACGAATGATGAGTGT

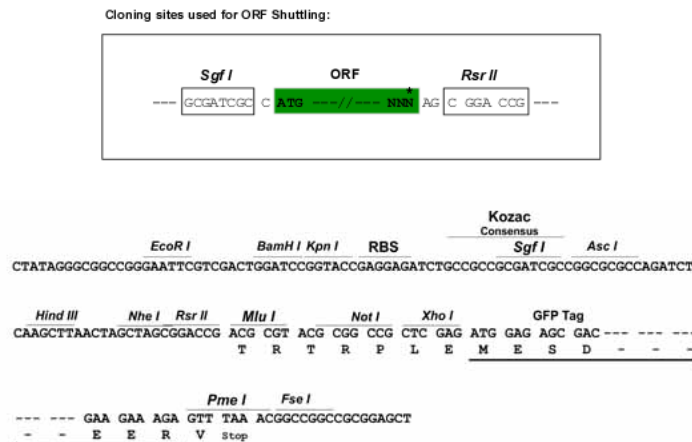
AGCGGACCGACGCGTACGCGGCCGCTCGAG - GFP Tag - GTTTAA

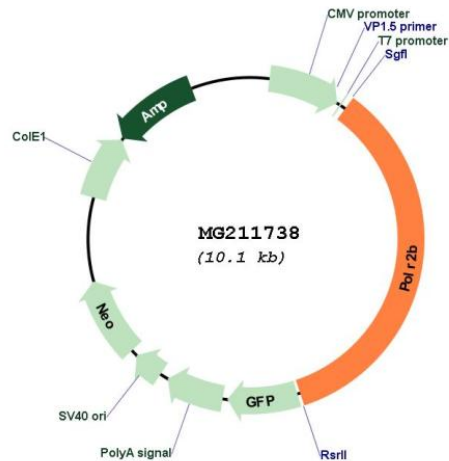
Protein Sequence: >MG211738 representing NM_153798
 Red=Cloning site Green=Tags(s)

MYDAEDEMQYDEDDDEITPDLWQEACWIVISSYFDEKGLVRQQLDSFDEFIQMSVQRIVEDAPPIDLQAE
 AQHASGEVEEPPRYLLKFEQIYLSKPTHWERDGA P S P M P N E A R L R N L T Y S A P L Y V D I T K T V I K E G E E Q L
 QTQHQTFTIGKIPIMLRSTYCLNGLTDRDLCELNECLDPGGYFIINGSEKVLIAQEKMATNTVYVFAK
 KDSKYAYTGEGRSCLNSSRPTSTIWSMLARGGQAKKSAIGQRIVATLPYIKQEVPIIIVFRALGFVS
 DRDILEHIYDFEDPEMMEMVKPSLDEAFVIEQNVALNFIGSRGAKPGVTKEKRIKYAKEVLQKEMPLPH
 VGVSDFCETKKAYFLGYMVHRLLLAALGRRELD DRDHYGNKRLDLA G P L L A F L F R G M F K N L L K E V R I Y A Q
 KFIDRGKDFNLELAIKTRII SDGLKYSLATGNWGDQKKAHQARAGVSQVLNRLTFAS T L S H L R R L N S P I G
 RDGKLAKPRQLHNTLWGMVCPAETPEGHAVGLVKNLALMAYISVGSQSPILEFLEEWSMENLEEISPA
 IADATKIFVNGCWVGIHKDPEQLMNTLRKLRQMDIIVSEVSMIRDIREREIRIYTDAGRICRPLLIVEK
 QKLLKKRHIDQLKEREYNNYSWQDLVAGSVVEYIDTLEEETVMLAMTPDDLQEKEVAYCSTYTHCEIHP
 SMILGVCASIIIPFDHNQSPRNTYQSAMGKQAMGVYITNFHVRMDLAHVLYYPQKPLVTRSMEYLRFR
 ELPAGINSIVAIASYTGYNQEDSVIMNRS AVDRGFFRSVFYRSYKEQESKKGFDQE EVFEKPTRET C Q G M
 RHAIYKELDDGLIAPGVRVSGDDVIIGKTVTL PENEDELESTNRRYTKRDCSTFLRTSETGIVDQVMVT
 LNQEGYKFCIRVRSVRIPQIGDKFASRHGQKGT CGI Q Y R Q E D M P F T C E G I T P D I I I N P H A I P S R M T I G H
 LIECLQKVSANKGEIGDATPFNDAVNVQKISNLLSDYGYHLRGNVLYNGFTGRKITSQIFIGPTYQR
 LKHMVDDKIHSRARGPIQLNRQPMEGRSRDGGLRF GEMERDCQIAHGAAQFLRERLFEASDPYQVHVNC
 LCGIMAIANTRTHTYECRGRNKTQISLVRMPYACKLLFQELMSMSIAPRMMSV

SGPTRRRLE - GFP Tag - V

Restriction Sites: SgfI-RsrII
Cloning Scheme:



Plasmid Map:


ACCN: NM_153798

ORF Size: 3522 bp

OTI Disclaimer: The molecular sequence of this clone aligns with the gene accession number as a point of reference only. However, individual transcript sequences of the same gene can differ through naturally occurring variations (e.g. polymorphisms), each with its own valid existence. This clone is substantially in agreement with the reference, but a complete review of all prevailing variants is recommended prior to use. [More info](#)

OTI Annotation: This clone was engineered to express the complete ORF with an expression tag. Expression varies depending on the nature of the gene.

Components: The ORF clone is ion-exchange column purified and shipped in a 2D barcoded Matrix tube containing 10ug of transfection-ready, dried plasmid DNA (reconstitute with 100 ul of water).

Reconstitution Method:

1. Centrifuge at 5,000xg for 5min.
2. Carefully open the tube and add 100ul of sterile water to dissolve the DNA.
3. Close the tube and incubate for 10 minutes at room temperature.
4. Briefly vortex the tube and then do a quick spin (less than 5000xg) to concentrate the liquid at the bottom.
5. Store the suspended plasmid at -20°C. The DNA is stable for at least one year from date of shipping when stored at -20°C.

RefSeq: [NM_153798.2](#), [NP_722493.2](#)

RefSeq Size: 3812 bp

RefSeq ORF: 3525 bp

Locus ID: 231329

UniProt ID: [Q8CFI7](#)

Cytogenetics: 5 C3.3

Gene Summary:

DNA-dependent RNA polymerase catalyzes the transcription of DNA into RNA using the four ribonucleoside triphosphates as substrates. Second largest component of RNA polymerase II which synthesizes mRNA precursors and many functional non-coding RNAs. Proposed to contribute to the polymerase catalytic activity and forms the polymerase active center together with the largest subunit. Pol II is the central component of the basal RNA polymerase II transcription machinery. It is composed of mobile elements that move relative to each other. RPB2 is part of the core element with the central large cleft, the clamp element that moves to open and close the cleft and the jaws that are thought to grab the incoming DNA template (By similarity).[UniProtKB/Swiss-Prot Function]