

Product datasheet for **MG211727**

Nrd1 (NM_146150) Mouse Tagged ORF Clone

Product data:

Product Type: Expression Plasmids
Product Name: Nrd1 (NM_146150) Mouse Tagged ORF Clone
Tag: TurboGFP
Symbol: Nrd1
Synonyms: 2600011I06Rik; AI875733; NRD-C; Nrdc
Mammalian Cell Selection: Neomycin
Vector: pCMV6-AC-GFP (PS100010)
E. coli Selection: Ampicillin (100 ug/mL)
ORF Nucleotide Sequence: >MG211727 representing NM_146150
 Red=Cloning site Blue=ORF Green=Tags(s)

TTTTGTAATACGACTCACTATAGGGCGGCCGGAATTCGTCGACTGGATCCGGTACCGAGGAGATCTGCC
 GCC**CGATCGCC**

ATGCTGAGGAGAGTCGGGTTGCTGCAGTCTGTGTACCAGGAGGAAGTTGCGGTGTGAGCCGGGCGGG
 AGCTCACGGCTCTGGGGCGAATCGAAGCACGGGGTCTGTGCGAAGAATCATCGAAACCCCTTCTACGCT
 GACCATGCCTGGAAGAAACAAGGCGAAGTCCACCTGCAGTTGCCCGACCTGCAGCCCAATGGACAGGAC
 TTGGGCGAGAGCGCCGGCTTGTCTAGGAGCGGATGAATCTGAGGAGGAGGACGGCTTTTCAGTA
 ATGTCGGGGACCCTGAGATCATCAAGTCTCCAGCGATCCAAGCAGTACCGATACATCAAATTACAGAA
 TGGCTTGCAGGCACTTTTGATTTAGATCTAAGTAATGTGGAAGGTAAGACAGGAAATGCAACAGATGAA
 GAGGAGGAAGAAGAGGAGGAGGAAGAGGAAGAAGATGATGATGATGACGACGACGACGACGATGATGATG
 AAGACTCTGGAGCTGAGATACAAGATGATGATGAGGAAGGTTTTGATGATGAAGAGGAATTTGATGATGA
 CGATGATGATGAACATGATGATGATGATCTTGAGAATGAGGAAAACGAACTGGAAGAGTTGGAAGAGAGG
 GTAGAAGCCAGGAAGAAAACACTGAGAAAACAGTCTGCAGCGGCTCTGTGTGTTGGAGTTGGGAGCTTTG
 CTGATCCAGATGACCTGCCTGGGCTGGCACACTTTTTGGAGCACATGGTATTCATGGGTAGTTTGAATA
 CCCTGATGAGAATGGATTTGATGCCTTCTCAAGAAAACATGGAGGTAGTGATAATGCCTCAACTGATTGT
 GAACGCACAGTCTTTCAGTTTGTGATGTCAGAGAAAGTATTTCAAGGAAGCCCTGGATAGATGGGCCAGT
 TCTTTATCCATCCACTGATGATCAGAGATGCAATTGACCGAGAGGTGGAAGCTGTGGACAGTGAGTATCA
 GCTTGCAAGCCCTTCTGATGCAAACAGAAAAGAAATGTTGTTTGAAGCCTCGCTAGACCGGACATCCT
 ATGGGGAAGTTTTTTGGGAAATGCTGAGACTCAAGCATGAACCAAAGAAGAATAACATTGATACAC
 ATGCCAGACTGAGAGAATTCTGGATGCGCTACTACTCTGCTCATTACATGACCTTAGTTGTTTCAGTCCAA
 AGAAACCCCTGGACACTTTGAAAAGTGGGTGACGGAGATCTTCTCTCAGATACCAAACAATGGGCTACCT
 AAACCAAACTTTAGCCATTTAACGGATCCTTTTGACACACCAGCATTTAACAACTTTATAGAGTTGTT
 CAATCAGAAAAATCCATGCTCTGACCATCATGGGCACTTCTCCTCAGCAGCAGCACTACAGGGTGAA
 GCCACTCATTATATTTCTGGCTTGTGGACATGAAGGCAAAGGCGCAGTCTTTCTTATCTTAGAAAA



[View online »](#)

AAGTGCTGGGCTCTTGCATTGTTTGGTGAAAATGGTGAGACAGGTTTTGAGCAAAATTCTACTACTCAG
TGTTTCAGCATTTCTATTACGCTGACTGATGAGGGCTATGAGCATTTTTATGAGGTTGCCACACTGTCTT
TCAGTATTTAAAAATGCTGCAGAAGCTAGGTCCAGAGAAAAGAGTTTTTGAAGAGATTGAGAAAATTGAG
GATAATGAATTTTCATTATCAAGAACAGACAGATCCAGTCGAGTATGTGGAGAACATGTGTGAGAACATGC
AGCTGTACCCACGTCAGGACTTTCTCACCGGAGATCAGCTTCTGTTTGTGTAACAAGCCAGAAGTCATTGC
TGAGGCCCTTAATCAGCTAGTTCCTCAGAAGGCAAAATCTCGTTCTTCTCTCTGGTCTAATGAGGGAAGA
TGTGACCTCAAGGAGAAGTGGTTGGGACTCAGTATAGCATAGAAGATATTGAAAACCTCTTGACTGAAC
TATGGAAGAGTAATTTTGACTTAAATCCAGACCTTCATCTTCCAGCTGAAAATAAGTACATAGCCACGGA
CTTTACGTTGAAGGCTTTTGATTGCCCTGAAAACGAATACCCTGCTAAAATTGTCAATACCCGACAAAGGC
TGCTTGTGGTATAAGAAAAGACAACAAATTCAAAATCCCCAAAGCATATATACGATTTTCATCTGATCTCAC
CTTTGATACAGAAATCTGCAGCAAAATGTTGCTCTTTGACATCTTCGTGAATATTCTTACGCACAACCT
TGCCGAACCCGCCTATGAAGCTGATGTGGCACAGCTGGAGTATAAACTGGTAGCTGGAGAACATGGGTTA
ATTATTCGAGTGAAGGATTCAACCACAACTACCTCTGCTCTTTCAGCTCATTATTGACTACCTGACTG
AGTTCAGTTCACACCCGCTGTCTTACCATGATAACTGAGCAACTGAAGAAGACCTACTCAACATCCT
CATCAAGCCCAGACTCTGGCCAAAGATGTGCGGCTTTTAATTCTGGAATATTCCCGCTGGTCTATGATT
GACAAGTACCAAGCTTTGATGGATGGCCTTTCCCTTGATTCTCTGCTAAACTTTGTCAAGGATTTTAAAT
CCCAACTTTTTGTTGAGGGCCTGGTCCAAGGGAATGTCACCAGCACGGAATCGATGGATTTCCCTAAAATA
TGTTGTTGACAAGCTGAACTTCGCGCCCTGGAGCGGGAGATGCCTGTGCAGTTCACAGGTGGTGGAGCTG
CCGAGCGGCCACCACCTGTGCAAGTCAGAGCTCTGAATAAAGGGGATGCCAACTCTGAAGTCACTGTGT
ACTACCAGTCAGGTACGAGGAGTCTGAGAGAATACTCTTATGGAGTCTGTTGTGATGCACATGGAAGA
GCCCTGCTTTGACTTCTTTCGCACCAAGCAGACCCTTGGGTACCATGTCTACCCAACCTGTAGGAACACA
TCTGGAATCTAGGATTTTCTGTAACCTGTTGGGACTCAGGCAACCAAAATACAACCTCCGAACTGTTGACA
AGAAGATAGAGGAATTTCTTCCAGCTTTGAGGAGAAGATTGAGAACCTCACAGAAGATGCATTCAATAC
TCAGGTACAGCACTGATCAAGTTGAAAGAGTGTGAGGACACCCACCTTGGGGAGGAGGTGGACAGGAAC
TGAATGAAGTGGTGACACAGCAGTATCTTTGACCGCCTTGCCCATGAGATTGAAGCCCTGAAGTCTT
TCTCAAAGTCAGACCTGGTCAAGGCTCACAGAGGACCTGGAAGTAAAATGCTCAGCGTTCA
TGTTGTTGGATATGGGAAGTATGAACTGGAAGAGGATGGTGCCCTTTTGGTGATGATTCAAATTCGT
GAAGGGATGCAGCTAACCTACCTGCCACCCTCTCCTGTCTGGCAGAATCCACCACCCCATTAAGTACA
TCAGGGCCTTACAGCAACACTCAGCCTTCCCTACCATAAAAATAGTCAA

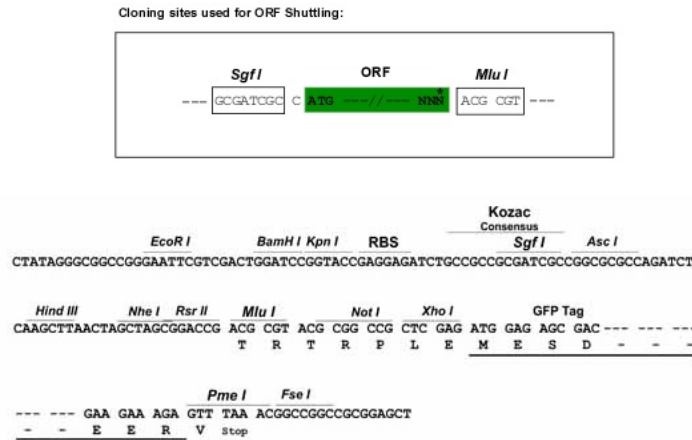
ACGCGTACGCGGCCGCTCGAG – GFP Tag – GTTTAA

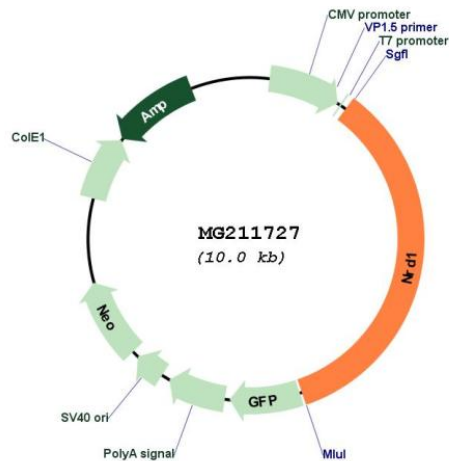
Protein Sequence: >MG211727 representing NM_146150
 Red=Cloning site Green=Tags(s)

MLRRVAVAAVCVTGRKLRCEAGRELTALGRIEARGLCEESSKPFPTLTMPGRNKAKSTCSCPDLQPNGQD
 LGESGLARLGADESEEEGRSFSNVGDPEIIKSPSDPKQYRYIKLQNLQALLISDL SNVEGKTGNATDE
 EEEEEEEEEEDDDDDDDDDDEDSGAEIQDDDEEGFDDDEEFDDDDDEHDDDDLENEENELEEELEER
 VEARKKTTTEKQSAALCVGVGSFADPDDLPLGLAHFLEHMVFMGSLKYPDENGFDAFLKKHGGSDNASTDC
 ERTVFQFDVQRKYFKEALDRWAQFFIHPLMIRDAIDREVEAVDSEYQLARPSDANRKEMLFGSLARPGHP
 MGKFFWGNAETLKHEPKNNIDTHARLREFWMRYSAHYMTLVVQSKETLDTLEKRWTEIFSQIPNNGLP
 KPNFSLHTDPFDTPAFNKLRYVVPPIRKIHALITWALPPQQQHYRVKPLHYISWLVGHEGKGSILSYLRK
 KCWALALFGNGETGFEQNSTYSVFSISITLDEGYEHFYVAHTVFQYLKMLQKLGPEKRVFEEIQKIE
 DNEFHQEQTDPVEYVENMCENMQLYPRQDFLTGDQLLFEYKPEVIAEALNQLVPQKANLVLLSGANEGR
 CDLKEKWFQTSIEDIENSWTELWKSDFLNPDLHLPANIKYIATDFTLKAFCPETEYPAKIVNTAQQ
 CLWYKKNKFKIPKAYIRFHLISPLIQSAANVFLDFIVNILTHNLAEPAYEADVAQLEYKLVAGEHGL
 IIRVKGFNHKLPLLFQLIIDYLTEFSSTPAVFTMITEQLKKTTFNLIKPETLAKDVRLLEIYSRWSMI
 DKYQALMDGLSLDSSLNFVKDFKSQLFVEGLVQGNVTSTESMDFLKVVVDKLNFAPLEREMPVQFQVVEL
 PSHHLLCKVRALNKGANSEVTVYVYQSGTRSLREYTLMELLVMHMEPCDFDLRTKQTLGYHYVYPTCRNT
 SGILGFSVTVGTQATKYNSSETVDKIEEFLSSFEKIEINLTEDAFNTQVTALIKLKECEDTHLGEEDVDRN
 WNEVVTQYQLFDRLAHEIEALKSFSKSDLVSWFKAHRGPGSKMLSVHVVGYGKYLEEDGAPFGDDSNR
 EGMQLTYLPPSPVLAESTTPTIDIRAFTATLSLFPYHKIVK

TRTRPLE - GFP Tag - V

Restriction Sites: SgfI-MluI
 Cloning Scheme:



Plasmid Map:


ACCN: NM_146150

ORF Size: 3483 bp

OTI Disclaimer: The molecular sequence of this clone aligns with the gene accession number as a point of reference only. However, individual transcript sequences of the same gene can differ through naturally occurring variations (e.g. polymorphisms), each with its own valid existence. This clone is substantially in agreement with the reference, but a complete review of all prevailing variants is recommended prior to use. [More info](#)

OTI Annotation: This clone was engineered to express the complete ORF with an expression tag. Expression varies depending on the nature of the gene.

Components: The ORF clone is ion-exchange column purified and shipped in a 2D barcoded Matrix tube containing 10ug of transfection-ready, dried plasmid DNA (reconstitute with 100 ul of water).

Reconstitution Method:

1. Centrifuge at 5,000xg for 5min.
2. Carefully open the tube and add 100ul of sterile water to dissolve the DNA.
3. Close the tube and incubate for 10 minutes at room temperature.
4. Briefly vortex the tube and then do a quick spin (less than 5000xg) to concentrate the liquid at the bottom.
5. Store the suspended plasmid at -20°C. The DNA is stable for at least one year from date of shipping when stored at -20°C.

RefSeq: [NM_146150.1](#)

RefSeq Size: 4155 bp

RefSeq ORF: 3486 bp

Locus ID: 230598

UniProt ID: [Q8BHG1](#)

Cytogenetics: 4 C7

Gene Summary: Cleaves peptide substrates on the N-terminus of arginine residues in dibasic pairs.
[UniProtKB/Swiss-Prot Function]