

## Product datasheet for **MG211702**

### **Abl1 (BC059260) Mouse Tagged ORF Clone**

#### Product data:

Product Type:	Expression Plasmids
Product Name:	Abl1 (BC059260) Mouse Tagged ORF Clone
Tag:	TurboGFP
Symbol:	Abl1
Synonyms:	Abl, c-Abl
Mammalian Cell Selection:	Neomycin
Vector:	pCMV6-AC-GFP (PS100010)
E. coli Selection:	Ampicillin (100 ug/mL)
ORF Nucleotide Sequence:	>MG211702 representing BC059260 Red=Cloning site Blue=ORF Green=Tags(s)

TTTTGTAATACGACTCACTATAGGGCGGCCGGAATTCGTCGACTGGATCCGGTACCGAGGAGATCTGCC  
GCC**CGATCGCC**

ATGGGGCAGCAGCCTGAAAAAGTTCTTGGGGACCAAAGAAGGCCTAGTTTGCCCGCCCTGCATTTTATCA  
AAGGGGCAGGGAAGAGGGACTCATCGAGGCATGGGGGCCACACTGCAATGTCTTTGTGGAACACGAAGC  
CCTGCAGAGGCCAGTGGCATCTGACTTTGAGCCCCAGGGTCTCAGCGAAGCAGCTCGATGGAACCTCAAG  
GAAAACCTTCTTGCTGGGCCAGTGAAAATGACCCCAACCTTTTTGTGGCACTCTATGATTTGTGGCCA  
GTGGAGATAAACTCTCAGCATCTAAAGGTGAAAAGCTCCGGTCTTGGGTTATAATCACAATGGGGA  
ATGGTGTGAAGCCAAACGAAAAATGGCCAAGGATGGGTCCCAAGCAACTACATCACCCCGTCAACAGC  
CTGGAGAAACATTCTGTATCATGGCCCTGTATCTCGGAATGCTGCTGAGTATCTGCTGAGCAGCGGAA  
TCAACGGCAGCTTCTTAGTGCGGGAGAGTGAGAGTAGCCCTGGCCAGAGATCCATCTCGTGCGGTATGA  
AGGGAGGGTGTACCACTACAGGATCAAACTGCCTCTGATGGCAAGCTGTACGTGTCTCCGAGAGCCGC  
TTCAAACTCTGGCTGAGTTAGTTCACCATCACTCCACGGTGGCTGATGGCCTCATCACCACTCCACT  
ACCCAGCTCCCAAGCGCAACAAGCCCACTATCTACGGTGTGTCCCCAACTACGACAAGTGGGAAATGGA  
GCGCACCGACATCCATGAAGCACAAGTTGGGTGGAGGCCAGTACGGGGAGGTGTACGAGGGCGTTTGG  
AAGAAGTACAGCCTCACTGTGGCCGTGAAGACCTTGAAGGAGACACCATGGAGGTGGAGGATTCCTGA  
AGGAAGCGCGGTGATGAAGGAGATCAAACACCCTAACCTGGTGCAGCTGCTAGGGGTGTGTACCGGGA  
ACCACCATTCTACATAATCACTGAGTTCATGACCTATGGGAACCTGCTGGACTACCTGAGGGAGTGAAC  
CGGCAGGAGGTGAGCGCCGTGGTACTGCTCTACATGGCCACACAGATCTCATCAGCCATGGAGTACTTGG  
AGAAGAAGAACTTCATCCACAGAGACCTTGCTGCCGGAAGTGCCTGGTAGGGGAAAACCACTTGGTGAA  
GGTGGCTGATTTTGGCCTGAGCAGGTTGATGACAGGGGACACCTACACGGCCATGCTGGAGCCAAATTC  
CCCATCAAATGGACCGCACCTGAGAGCCTGGCCTACAACAAGTTCTCCATCAAGTCGGACGTGTGGGCAT  
TTGGAGTATTGCTCTGGGAGATTGCTACCTATGGCATGTCACCTTACCCGGAATTGACCTGTCTCAGT  
TTATGAGTCTGGAAAAAGACTACCGCATGGAGCGCCCTGAAGGCTGCCCGGAGAAGGTCTACGAGCTC



[View online >](#)

```

ATGCGAGCATGTTGGCAGTGAACCCCTCTGACCGGCCCTCCTTTGCTGAAATCCACCAAGCCTTTGAAA
CCATGTTCCAGGAATCCAGTATCTCAGATGAGGTGGAGAAGGAGCTGGGGAAACGAGGCACGAGAGGAGG
TGCTGGGAGTATGCTGCAGGCCCCAGAGCTGCCACCAAGACCAGAACCTGCAGGAGAGCAGCTGAGCAG
AAAGATGCGCCTGACACCCCTGAGCTGCTCCACACGAAGGGCCTGGGAGAAAAGCGATGCACTGGACAGTG
AGCCTGCTGTATCGCCACTGCTTCTCGAAAGAGCGCGGGCCCCAGACGGCAGCCTAAATGAAGATGA
GCGCCTTCTCCCCAGAGACAGAAAAGACCAACCTGTTACGCGCTTGTATCAAGAAGAAGAAGAAAATGGCG
CCGACGCCCCCTAAGCGCAGAGTTCTTCCGAGAGATGGATGGCCAGCCAGACCCGACAGAGGGGCTAGTG
AGGATGACAGCAGGGAACTCTGCAATGGACCACAGCTCTCACCTCAGACGCAGCAGAGCCTACCAAGTC
CCCAAAGGCCAGCAATGGGGCTGGCGTCCCTAATGGAGCCTTCCGGGAGCCGGGCAACTCAGGCTTCCGT
TCTCCCCACATGTGAAAAAGTCCAGCACACTGACCGGGAGCCGCTGGCTGCTGCCAAGAGGAGAGCG
GCATGAGTCCAGTAAGCGCTTCTGCGTTCTTGTTCGGCCTCTGCATGCCCATGGGGCAAGGGACAC
AGAGTGGCGGTCCGTCACGCTGCCTCGAGACTGCCGTCTGTGGCAAGCAGTTTACTCATCCACCTTT
GGAGGGCACAAAAGCGAAAAGCCAGCTCTGCCTCGAAACGCACCAGTGAAGCAGGTCTGAGCAGGTGG
CCAAAAGCACGGCGATGCCCTTCCCGGCTGGTGAAGAAGAACGAGGAGGCTGTGAAGAAGGCTTCAA
AGACACAGAATCCAGCCCTGGCTCCAGCCCTCCAGCTTACTCCAAACTCCTCCGAGGCAGGCTCACT
GCCTCTCCTTCTCTGGCCTCTCTCACAAGGAAGAGGCCACCAAGGGCAGTGCCTCAGGCATGGGGACTC
CGGCCACTGCAGAGCCAGCACCCCCAGCAAAAGTGGGCTCAGCAAGGCCTCCTCTGAGGAGATGCG
CGTAAGGAGGCACAAGCAGACTCGGAGTCCCCAGGGAGAGACAAGGGGCGACTGGCTAAGCTCAAGCCT
GCCCGCCGCTCCTCTGCCTGCACAGGAAAAGCAGGCAAGCCCGCACAGAGCCCAGCCAAGAGGGCCG
GGGAGGCAGGGGGGCCACAAAAGACAAAATGCACGAGTCTGGCTATGGATGCTGTGAACACTGACCCAC
CAAGGCCGGCCACCTGGAGAAGGACTGAGAAAAGCCTGTGCCCATCTGTGCCAAAGCCCCAGTCGACG
GCTAAGCCTCCAGGACTCCCACCAGCCGGTCTCCACCCCTCCACAGCACCAGCTCCTTACCCTGG
CTGGGGACCAAGCAGCCATCTTCTGCGCCTTATCCCCCTCATCAACCCGTGTGTCTCTTAGGAAGAG
CCGCCAGCCGCCAGAGCGCATTGCCAGTGGCACCATACCAAGGGTGTGGTTCTGGACCTTACTGAGGCC
CTGTGCCTTGCCATCTCCGGAAGTCCAGCAGATGGCCAGCCACAGTGTGTACTGGAGGCTGGCAAGA
ACCTGTACACTTTCTGTGTGAGCTATGTGGACTTATCCAGCAGATGAGGAACAAGTTTGCCTTCCGTGA
GGCTATCAACAAGCTGGAGAGCAACCTCCGAGAGCTGCAGATCTGCCCTGCCACAGCCTCCAGTGGGCCA
GCTGCCACCAAGACTTCAGCAAGCTGCTCAGCTCTGTGAAGGAGATCAGCGACATTGTCCGGAGG
    
```

ACGCGTACGCGGCCGCTCGAG – GFP Tag – GTTTAA

**Protein Sequence:**

>MG211702 representing BC059260  
 Red=Cloning site Green=Tags(s)

```

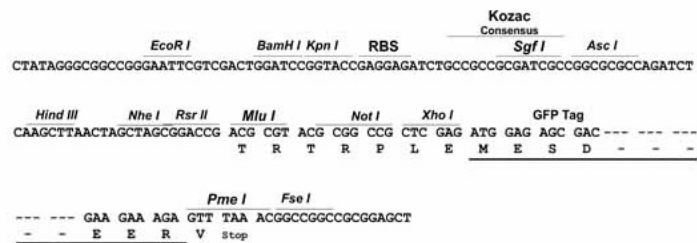
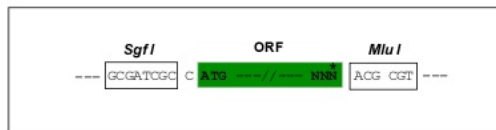
MQQPQPKVLDQRRPSPALHFIKGAGKRDSSRHGGPHCNVFEHEALQRPVASFEPQGLSEARWNSK
ENLLAGPSENDPNLFVALYDFVASGDNTLSITKGEKLRVLYGNHNGEWCEAQTKNGQGWVPSNYITPVNS
LEKHSWYHGPVSRNAEYLLSSGINGSFLVRESESSPGQRSISLRYEGRVYHYRINTASDGKLYVSESER
FNTLAELVHHHSTVADGLITTLHYPAKRNKPTIYGVSPNYDKWEMERTDITMKHKLGGGQYGEVYEGVW
KKYSLTVAVKTLKEDTMEVEEFLKEAAVMKEIKHPNLVQLLGVCTREPPFYIITEFMTYGNLLDYLRECN
RQEVSAVVLLYMATQISSAMEYLEKKNFIHRDLAARNCLVGENHLYKVADFGLSRLMTGDTYTAHAGAKF
PIKWTAPESLAYNKFSIKSDVWAFGVLLWEIATYGMSPYPGIDLQVYELLEKDYRMERPEGCPEKYYEL
MRACWQWNPDRPSFAEIQHAFETMFQESSISDEVEKELKGRGTRGGAGSMLQAPELPTKTRTCRRAAEQ
KDAPDTPPELLHTKGLGESDALDSEPAVSPLLPRKERGPPDGSLNEDERLLPRDRKTNLFSALIKKKKMA
PTPPKRSSSFREMDGQDRRGASEDDREL CNGPPALTSDAAEPTKSPKASNGAGVNPNGAFREPGNSGFR
SPHMWKKSSLTGSRLAAAEESGMSSSKRFLRSCSASCMPHGARDTEWRSVTLPRDLPSAGKQFDSSTF
GGHKSEKPALPRKRTSESRSEQVAKSTAMPPPRLVKKNEEAAEEGFKDTESSPGSSPPLTPKLLRRQVT
ASPSSGLSHKEEATKGSASGMGTPATAEAPPNSNKVGLSKASSEEMRVRRHKHSSESPGRDKGLAKLKP
APPPPPACTGKAGKPAQSPSQEAGEAGGPTKTKCTSLAMDVNTDPTKAGPPGELRKPVPSPVKPQST
AKPPGPTPTSPVSTPSTAPAPSPLAGDQQPSSAAFIPLISTRVSLRKTQPPERIASGTITKGVVLDSTEA
LCLAIRNSEQMASHSAVLEAGKNLYTFCVSYVDSIQQMRNKFAFREAINKLESNLRELQICPATASSGP
AATQDFSKLLSSVKEISDIVRR
    
```

TRTRPLE – GFP Tag – V

Restriction Sites: SgfI-MluI

Cloning Scheme:

Cloning sites used for ORF Shuttling:



ACCN: BC059260

ORF Size: 3426 bp

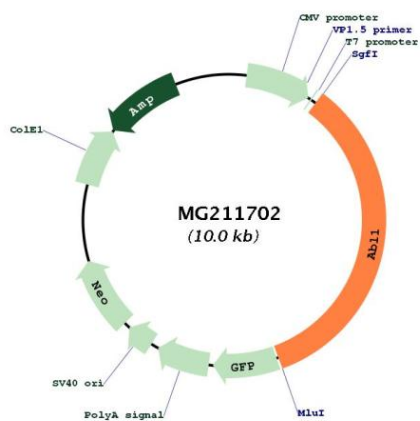
OTI Disclaimer: The molecular sequence of this clone aligns with the gene accession number as a point of reference only. However, individual transcript sequences of the same gene can differ through naturally occurring variations (e.g. polymorphisms), each with its own valid existence. This clone is substantially in agreement with the reference, but a complete review of all prevailing variants is recommended prior to use. [More info](#)

<b>OTI Annotation:</b>	This clone was engineered to express the complete ORF with an expression tag. Expression varies depending on the nature of the gene.
<b>Components:</b>	The ORF clone is ion-exchange column purified and shipped in a 2D barcoded Matrix tube containing 10ug of transfection-ready, dried plasmid DNA (reconstitute with 100 ul of water).
<b>Reconstitution Method:</b>	<ol style="list-style-type: none"><li>1. Centrifuge at 5,000xg for 5min.</li><li>2. Carefully open the tube and add 100ul of sterile water to dissolve the DNA.</li><li>3. Close the tube and incubate for 10 minutes at room temperature.</li><li>4. Briefly vortex the tube and then do a quick spin (less than 5000xg) to concentrate the liquid at the bottom.</li><li>5. Store the suspended plasmid at -20°C. The DNA is stable for at least one year from date of shipping when stored at -20°C.</li></ol>
<b>RefSeq:</b>	<u><a href="#">BC059260</a></u> , <u><a href="#">AAH59260</a></u>
<b>RefSeq Size:</b>	5168 bp
<b>RefSeq ORF:</b>	3428 bp
<b>Locus ID:</b>	11350
<b>Cytogenetics:</b>	2 B

**Gene Summary:**

Non-receptor tyrosine-protein kinase that plays a role in many key processes linked to cell growth and survival such as cytoskeleton remodeling in response to extracellular stimuli, cell motility and adhesion, receptor endocytosis, autophagy, DNA damage response and apoptosis. Coordinates actin remodeling through tyrosine phosphorylation of proteins controlling cytoskeleton dynamics like WASF3 (involved in branch formation); ANXA1 (involved in membrane anchoring); DBN1, DBNL, CTTN, RAPH1 and ENAH (involved in signaling); or MAPT and PXN (microtubule-binding proteins). Phosphorylation of WASF3 is critical for the stimulation of lamellipodia formation and cell migration. Involved in the regulation of cell adhesion and motility through phosphorylation of key regulators of these processes such as BCAR1, CRK, CRKL, DOK1, EFS or NEDD9. Phosphorylates multiple receptor tyrosine kinases and more particularly promotes endocytosis of EGFR, facilitates the formation of neuromuscular synapses through MUSK, inhibits PDGFRB-mediated chemotaxis and modulates the endocytosis of activated B-cell receptor complexes. Other substrates which are involved in endocytosis regulation are the caveolin (CAV1) and RIN1. Moreover, ABL1 regulates the CBL family of ubiquitin ligases that drive receptor down-regulation and actin remodeling. Phosphorylation of CBL leads to increased EGFR stability. Involved in late-stage autophagy by regulating positively the trafficking and function of lysosomal components. ABL1 targets to mitochondria in response to oxidative stress and thereby mediates mitochondrial dysfunction and cell death. In response to oxidative stress, phosphorylates serine/threonine kinase PRKD2 at 'Tyr-717' (By similarity). ABL1 is also translocated in the nucleus where it has DNA-binding activity and is involved in DNA-damage response and apoptosis. Many substrates are known mediators of DNA repair: DDB1, DDB2, ERCC3, ERCC6, RAD9A, RAD51, RAD52 or WRN. Activates the proapoptotic pathway when the DNA damage is too severe to be repaired. Phosphorylates TP73, a primary regulator for this type of damage-induced apoptosis. Phosphorylates the caspase CASP9 on 'Tyr-191' and regulates its processing in the apoptotic response to DNA damage. Phosphorylates PSMA7 that leads to an inhibition of proteasomal activity and cell cycle transition blocks. Regulates T-cell differentiation in a TBX21-dependent manner (PubMed:21690296). Phosphorylates TBX21 on tyrosine residues leading to an enhancement of its transcriptional activator activity (PubMed:21690296).[UniProtKB/Swiss-Prot Function]

Product images:



Circular map for MG211702