

Product datasheet for **MG211698**

Ddb1 (NM_015735) Mouse Tagged ORF Clone

Product data:

Product Type:	Expression Plasmids
Product Name:	Ddb1 (NM_015735) Mouse Tagged ORF Clone
Tag:	TurboGFP
Symbol:	Ddb1
Synonyms:	127kDa; AA408517; p127-Ddb1
Mammalian Cell Selection:	Neomycin
Vector:	pCMV6-AC-GFP (PS100010)
E. coli Selection:	Ampicillin (100 ug/mL)
ORF Nucleotide Sequence:	>MG211698 representing NM_015735 Red=Cloning site Blue=ORF Green=Tags(s)

TTTTGTAATACGACTCACTATAGGGCGGCCGGAATTCGTCGACTGGATCCGGTACCGAGGAGATCTGCC
GCC**CGATCGCC**

ATGTCGTACAACACTACGTCGTAACGGCGCAGAAGCCTACTGCAGTGAACGGCTGTGTGACCGGACACTTTA
CTTCAGCGGAAGATCTGAACCTGTTGATTGCTAAAAACACAAGATTAGAGATCTATGTGGTCACTGCGGA
GGGTCTTCGGCCAGTCAAAGAGGTGGGAATGTACGGGAAGATTGCAGTCATGGAGCTCTTCAGGCCCAAG
GGGAGAGCAAAGACCTGCTGTTTCATCTTGACTGCTAAATACAATGCCTGTATCTTGAGATATAAGCAGA
GTGGCGAAAGCATTGACATCATTACAAGAGCCCATGGCAATGTCCAGGACCGCATTGGTCCGCCCTCGGA
GACTGGCATCATTGGCATCATTGACCCTGAGTGGCGTATGATTGGCCTTCGACTCTACGATGGCCTTTTC
AAGGTCATTCCACTAGACCGAGACAATAAAGAGCTCAAGGCCTTAACATCCGCCTAGAGGAACTGCACG
TCATTGATGTCAAGTTCCTGTATGGTTGTCAAGCACCTACCATTGCTTTGTCTACCAGGATCCTCAGGG
GCGGCATGTGAAAACCTATGAGGTGTCTCTTCGAGAGAAGGAGTTCAACAAGGGCCCTTGAAAACAGGAG
AATGTAGAAGCCGAAGCTTCAATGGTGATAGCAGTCCCAGAGCCTTTGGAGGTGCCATCATCATTGGAC
AGGAATCAATCACCTATCATAACGGTGATAAATACCTGGCAATTGCTCCTCCTATCATTAAAGCAAAGCAC
TATTGTGTGCCATAACCGGGTGGATCCTAATGGCTCGCGGTACCTTCTGGGAGATATGGAGGACGGCTT
TTCATGCTGCTCTTAGAGAAGGAGGAGCAGATGGATGGCACTGCACCCTCAAGGACCTTCGAGTGGAAAC
TCCTCGGAGAGACCTCCATTGCTGAGTGCCTAACTTATCTTGATAATGGTGTGTATTTGTCGGGTCTCG
CCTAGGTGACTCCAGCTCGTAAAGCTCAATGTGACAGCAACGAACAAGGCTCCTATGTAGTGGCCATG
GAAACCTTTACCAATTTAGGACCCATTGTGGATATGTGTGTGGTGGACCTGGAGAGGCAGGGACAGGGTC
AGCTGGTCACTTGTCTGGAGCTTTCAAGGAAGGTTTCTTGCGGATCATCCGGAACGGCATTGGAATCCA
TGAGCATGCCAGCATTGACTTACCAGGCATCAAAGGTTTATGGCCTCTGCGCTCTGACCCCGGTCCGGAG
ACGGATGACACTTTGGTGTCTCTTTTGTGGCCAGACAAGAGTTCTCATGCTAAACGGAGAGGAAGTGG
AAGAGACAGAAGTATGGCTTTGTGGACGATCAGCAGACTTTCTTTTGTGGCAACGTGGCTCATCAGCA
ACTTATCCAGATCACCTCAGCATCTGTGAGGTTGGTGTCTCAAGAGCCCAAGCTTTGGTCAGCGAGTGG



AAAGAGCCTCAGGGCAAGAACATCAGTGTGGCCTCCTGTAAACAGCAGCCAGGTGGTTGTTGCCGTGGGAA
 GGGCACTAATTACCTTCAGATCCACCCTCAGGAGCTCCGGCAAATCAGCCACACAGAGATGGAACATGA
 AGTGGCATGCTTGGATATCACCCATTAGGGGACAGCAATGGCCTCTCCCACCTTGTGCCATTGGACTT
 TGGACAGACATCTCAGCTCGATCCTGAAGCTCCCATCCTTTGAACTACTACACAAGGAGATGCTGGGTG
 GAGAGATCATTCTCGATCCATCCTGATGACCCTTTGAGAGTAGCCACTACCTCCTTTGTGCCTTGGG
 AGATGGGGCTCTTTTCTACTTTGGGCTCAACATCGAGACAGGTTACTGAGTGACCGTAAAAAGGTGACT
 TTGGGCACCCAGCCACGGTGTGAGGACATTCGGTCTCTTTTCTACCACCAACGCTTTTGTCTGCTG
 ACCGGCCCACTGTCATCTATAGCAGCAATCACAAGTTGGTCTTCTCCAATGTCAACCTCAAGGAGGTGAA
 CTATATGTGCTCTCAACTCAGATGGCTATCCTGACAGTCTGGCATTGGCCAATAACAGCACTCTCACC
 ATTGGCACCATCGATGAGATCCAGAAGCTCCATATTCGCACAGTCCCCTCTATGAGTCTCCAGGAAGA
 TCTGCTATCAGGAAGTGTCTCAGTGCTTTGGGGTCTTTCCAGCCGATTGAAGTCCAAGATAGCAGTGG
 AGGCACTACTGCTTTGAGGCCAGTGCCAGCACCCAGGCCCTGTCCAGCAGCGTCAGCTCCAGCAAACCT
 TTCTCCAGCAGTACGGCTCCTCACGAGACCTCCTTTGGAGAAGAAGTGGAGGTGCACAACCTCCTCATCA
 TTGACCAGCACACCTTTGAAGTGCTTACGCCCATCAGTTTCTACAAAACGAGTATGCCCTCAGCCTGGT
 CTCTGCAAGTTGGGTAAGACCCCAACACTTACTTATTGTGGGCACAGCCATGGTATATCCTGAAGAG
 GCAGAGCCCAAGCAGGGTTCGATTTGTGGTCTTCCAGTATTGAGATGGAAAACACAGACTGTGGCTGAAA
 AGGAAGTAAAAGGAGCTGTGACTCTATGGTGGAGTTAATGGGAAGCTGCTTGCCAGCATCAATAGCAC
 GGTGCGGCTCTATGAGTGGACCACAGAAAAGGAGCTTCGCACTGAGTGTAACTACTACAACAACATCATG
 GCCCTGTACCTGAAGACCAAGGGCGACTTCATCCTGGTGGGCGACCTCATGCGCTCAGTGTCTGCTTGT
 CCTACAAGCCTATGGAAGGAACTTTGAAGAGATTGCCGAGACTTTAATCCCAACTGGATGAGTGCAGT
 GGAGATCTTGGATGATGACAATTTCTGGGAGCTGAAAATGCCTTTAACTTGTGTGTGTCAGAAGGAC
 AGTGCTGCCACCCTGATGAGGAGCGGCAGCACCTACAGGAGGTTGGTCTCTTCCACCTGGGCGAGTTTG
 TCAATGTGTTCTGCCATGGCTCCCTAGTTATGCAGAATCTGGGCGAGGCTTCTACCCCTACACAGGGCTC
 GGTGCTCTTTGGCACAGTCAACGGCATGATAGGGCTGGTACCTCGCTGTGAGAGAGCTGGTATAAACCCTC
 CTGTTGGACATGCAGAACCGACTCAATAAGGTCATCAAAAAGCGTGGGCAAGATTGAGCACTCCTTCTGGA
 GATCCTTTCACTGAGCGAAAAGACAGAACCAGCCACAGGCTTTCATCGATGGTGTCTGATTGAAAGTTT
 CCTAGATATCAGCCGCCCTAAGATGCAGGAGGTTGTGGCAAACCTGCAGTATGATGATGGCAGTGGTATG
 AAGCGGGAGGCAACTGCAGATGACCTCATCAAAGTCGTGGAGGAGCTAACTCGGATCCAT

ACGCGTACGCGGCCGCTCGAG – GFP Tag – GTTTAA

Protein Sequence:

>MG211698 representing NM_015735
 Red=Cloning site Green=Tags(s)

MSYNYVVTAAQKPTAVNGCVTGHFTSAEDLNLLIAKNTRLEIYVVTAEGLRPVKEVGMYGKIAVMELFRPK
 GESKDLLFILAKYNACILEYKQSGESIDITTRAHGNVQDRIGRPSETGIIGIIDPECRMIGLRLYDGLF
 KVIPLDRDNKELKAFNIRLEELHVIDVKFLYGCQAPTICFVYQDPQGRHVKTIEVSLREKEFNKGPWKQE
 NVEAEASMVIIVPEPFGGAIIGQESITYHNGDKYLAIAPPIIKQSTIVCHNRVDPNGSRYLLGDMEGRL
 FMLLLEKEEQMDGTVTLKDLRVELLGETSIAECLTYLDNGVVFVGSRLGDSQLVKLNVDNSNEQGSYVAM
 ETFTNLGPIVDMCVVDLERQGGQQLVTCGAFKEGSLRIIRNGIGIHEHASIDLPGIKGLWPLRSDPGRE
 TDDTLVLSFVQTRVLMNGEEVEETELMGFVDDQQTFFCGNVAHQQLIQITSASVRLVSQEPKALVSEW
 KEPQGNISVASCNSSQVVAVGRALYYLQIHPQELRQISHTEMEHEVACLDITPLGDSNGLSPLCAIGL
 WTDISARILKLPSEFELLHKEMLGGEIIPRSILMTTFESSHYLLCALGDGALFYFGLNIETGLLSDRKKVT
 LGTOPTVLRFRSLSTTNVFACSRPTVIYSSNHKLVSNNLKEVNYMCPNLSGYPDSLALANNSTLT
 IGTIDEIQKLHIRTVPLEYSPRKICYQEVSQCFVLSRRIEVQDSSGGTTALRPSASTQALSSSVSSSKL
 FSSSTAPHETSFGEEVEVHNLIIIDQHTFEVLHAHQFLQNEYALSLVSCKLGKDPNTYFIVGTAMVYPEE
 AEPKQGRIVVFQYSDGKLQTVAEKEVKGAVYSMVEFNGKLLASINSTVRLYEWTTTEKELRTECNHYNNIM
 ALYLKTKGDFILVGDLMRSVLLLAYKPMEGNFEEIARDFNPNWMSAVEILDDDNFLGAENAFNLVFCQKD
 SAATTDEERQHLQEVGLFHLGEFVNVFCHGSLVMQNLGEASTPTQGSVLFGTVNGMIGLVTLSSESWYNL
 LLDQMQRNLNKVIKSVGKIEHSFWRFSFHTERKTEPATGFIDGDLIESFLDISRPKMQEVVANLQYDDGSGM
 KREATADDLIKVEELTRIH

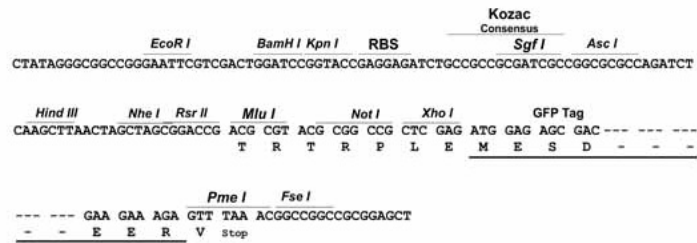
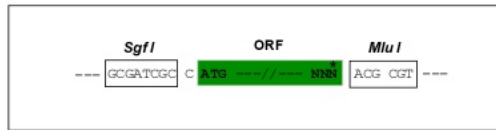
TRTRPLE – GFP Tag – V

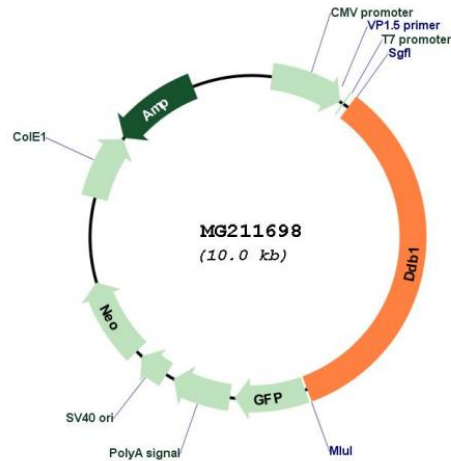
Restriction Sites:

SgfI-MluI

Cloning Scheme:

Cloning sites used for ORF Shuttling:



Plasmid Map:


ACCN: NM_015735

ORF Size: 3420 bp

OTI Disclaimer: The molecular sequence of this clone aligns with the gene accession number as a point of reference only. However, individual transcript sequences of the same gene can differ through naturally occurring variations (e.g. polymorphisms), each with its own valid existence. This clone is substantially in agreement with the reference, but a complete review of all prevailing variants is recommended prior to use. [More info](#)

OTI Annotation: This clone was engineered to express the complete ORF with an expression tag. Expression varies depending on the nature of the gene.

Components: The ORF clone is ion-exchange column purified and shipped in a 2D barcoded Matrix tube containing 10ug of transfection-ready, dried plasmid DNA (reconstitute with 100 ul of water).

Reconstitution Method:

1. Centrifuge at 5,000xg for 5min.
2. Carefully open the tube and add 100ul of sterile water to dissolve the DNA.
3. Close the tube and incubate for 10 minutes at room temperature.
4. Briefly vortex the tube and then do a quick spin (less than 5000xg) to concentrate the liquid at the bottom.
5. Store the suspended plasmid at -20°C. The DNA is stable for at least one year from date of shipping when stored at -20°C.

RefSeq: [NM_015735.2](#)

RefSeq Size: 4171 bp

RefSeq ORF: 3423 bp

Locus ID: 13194

UniProt ID: [Q3U1J4](#)

Cytogenetics: 19 6.66 cM

Gene Summary:

Required for DNA repair. Binds to DDB2 to form the UV-damaged DNA-binding protein complex (the UV-DDB complex). The UV-DDB complex may recognize UV-induced DNA damage and recruit proteins of the nucleotide excision repair pathway (the NER pathway) to initiate DNA repair. The UV-DDB complex preferentially binds to cyclobutane pyrimidine dimers (CPD), 6-4 photoproducts (6-4 PP), apurinic sites and short mismatches. Also appears to function as a component of numerous distinct DCX (DDB1-CUL4-X-box) E3 ubiquitin-protein ligase complexes which mediate the ubiquitination and subsequent proteasomal degradation of target proteins. The functional specificity of the DCX E3 ubiquitin-protein ligase complex is determined by the variable substrate recognition component recruited by DDB1. DCX(DDB2) (also known as DDB1-CUL4-ROC1, CUL4-DDB-ROC1 and CUL4-DDB-RBX1) may ubiquitinate histone H2A, histone H3 and histone H4 at sites of UV-induced DNA damage. The ubiquitination of histones may facilitate their removal from the nucleosome and promote subsequent DNA repair. DCX(DDB2) also ubiquitinates XPC, which may enhance DNA-binding by XPC and promote NER. DCX(DTL) plays a role in PCNA-dependent polyubiquitination of CDT1 and MDM2-dependent ubiquitination of TP53 in response to radiation-induced DNA damage and during DNA replication. DCX(ERCC8) (the CSA complex) plays a role in transcription-coupled repair (TCR). May also play a role in ubiquitination of CDKN1B/p27kip when associated with CUL4 and SKP2 (By similarity). The DDB1-CUL4A-DTL E3 ligase complex regulates the circadian clock function by mediating the ubiquitination and degradation of CRY1 (PubMed:26431207). DDB1-mediated CRY1 degradation promotes FOXO1 protein stability and FOXO1-mediated gluconeogenesis in the liver (PubMed:28790135).[UniProtKB/Swiss-Prot Function]