

Product datasheet for **MG211690**

Rbl2 (NM_011250) Mouse Tagged ORF Clone

Product data:

Product Type: Expression Plasmids
Product Name: Rbl2 (NM_011250) Mouse Tagged ORF Clone
Tag: TurboGFP
Symbol: Rbl2
Synonyms: p130; PRB2; Rb2; RBR-2
Mammalian Cell Selection: Neomycin
Vector: pCMV6-AC-GFP (PS100010)
E. coli Selection: Ampicillin (100 ug/mL)
ORF Nucleotide Sequence: >MG211690 representing NM_011250
 Red=Cloning site Blue=ORF Green=Tags(s)

TTTTGTAATACGACTCACTATAGGGCGGCCGGAATTCGTCGACTGGATCCGGTACCGAGGAGATCTGCC
 GCC**CGATCGCC**

ATGGCATCTGGAGGCAACCAGTCGCCACCGCCTCCTCCAGCTGCTGCAGCCAGCTCGGAGGAAGAGGAGG
 AGGATGGCGACGCCGCGGATCGCGCGCAGCCCGGGGTCCCCGAGCCATCAGATCCAGCAGCGTTTCGA
 GGAGCTGTGCAGCCGCTCAACATGGACGAGCGCGCGCGGAGGCCGGAGCAGCTACCGCAGCATG
 AGCGAGAGCTACACGCTGGAGGAAATGACCTTCATTGGTTAGCATGTGCCTTATATGTGGCTTGCAGAA
 AATCTGTTCCAAGTGTGAGCAAAGGGACCGCTGAAGGAACTATGTATCTTTAACCAAGATCCTTCGCTG
 TTCGGAGCAGAGCCTAATTGAATTTTTTAAACAAGATGAAGAAGTGGGAAGACATGGCAAATCTGCCCCCA
 CATTTCGAGAACGTAAGGATTAGAAAGAACTTCACTGTTTCTGCTGTGATTTTTAAGAAATATG
 AACCCATTTTTCAAGACATTTTTAAATATCCCCAAGAAGAACAGCCTCGCCAGCAAAGAGGAAGAAAACA
 GAGGCGACAGCCCTGTACCACATCAGAAATTTCCATTTTTGCTGGGTGCTTTTTATATATGCGAAAGGG
 AACTTCCCATGATTAGCGATGATCTGGTCAATTCCTACCATCTTCTGCTGTGCGCATTAGATTTAGTCT
 ATGGAAATGCCCTTCAGTGTCTAACCGTAAAGAACTTGTGAACCCTAATTTTAAAGGCCTGTCCGAGGA
 CTGTCACCCCAAGGACTCTAAAGCGTCTCCGACCCCGGTGTGTCATTGAGAAGCTGTGCTCCTTACAC
 GACGGTCTAGTGTGGAGGCAAGGGATAAAGGAACACTTCTGGAAACCCTATATTAGGAACTGTTTG
 AGAAAAAGCTTCTCAAGGGAAGGAAGAAAATCTTACTGGCTTCTGGAGCCCGGAAACTTTGGAGAGAG
 TTTTAAGGCCGTTAATAAGGCATATGAAGAATACGTGTTAGCCGCTGGGAATCTGGATGAGCGCGTATTC
 CTTGGTGAAGGATGCTGAGGAGGAAGTTGGGACTCTGTCTCGGTGCTAAGTGCTGCCTCAGGTACAGAGA
 GTGCTGAACGGACGCAGATGAGAGACATCTTGACGAGCATCTTGACAAGTCTAAAGCACTTAGAGTCTG
 CACACCACTGACTGGCGTGAGGTATGTTGAGGAGAACAGCCCGTGTGACTCCCGTCTCCACAGCTGCA
 CACAGCCTGAGCCGTCTCACACCATGCTGTCCGGCCTCAGGAATGCACCCAGTGAAGCTGGAGCGGA
 TACTCAGGTGATGTTCCCGAGATCCAAGTATCGCTGACAGATTGAAAGAAATGTACGAAATATA
 TTCTCAGCATTTCCAGCCAGATGAGAATTTAGTAATTGTGCTAAAGAAATTGCCAACAAACATTTTCGT



[View online >](#)

```

TTTGCAGAAATGCTCTACTATAAAGTATTAGAGTCTGTTATTGAGCAAGAACAAAAAGATTGGGAGACA
TGGATTTATCTGGTGTCTGGAGCATGACGCATTCCACAGGCTACTCTTGGCCTGCTGCCTTGAGGTGGT
CGCTTTTTCCCATAAAGCCTCCTGGGAATTTCCATTTATTGCTGAAATATTTGATGTACCACATTATCAT
TTTTATAAGGTAATTGAAGTATTTATTAGAGCAGAAGACGGTCTTTGCAGAGAAGTGGTCAAACACCTCA
ATCAGATTGAAGAACAAATTTAGACCATTTGGCATGGAAAACCAAGTCCCCTGCTGGGACAGAATTAG
AGATAATGAAAACAGAGTCCCTACTTGTGAAGAGGTCATGCCACCTCAAAACCTAGAGAGAACAGATGAA
ATTTACATCGCTGGCTCTCCCTTAACCCGAGAAGGGTGGTGAAGTTCGTGCTGATGCTGGAGGACTTG
GAAGAAGTATAACGTCTCCAACCCACTTGTATGACAGGTACAGCTCCCAACAGTCACTACTAGAAAG
GCGGCTATTTCGAGAATGATAGTCCCTCTGAAGGAAGCACATCTGGGCGCATCCCCCACAACCCCTAGTC
AACGCTGTCCCGTGCAGAATGTACCTGGGGAGACTGTTTCTGTACACCAGTTCCTGGACAGACCTTGG
TCACCATGGCAACAGCCACTGTCACGGCCAACAATGGACAAACAGTGACCATTCCAGTCCAAGGTATTGC
CAACGAAAATGGAGGGATAACCTTCTCCAGTCCAAGTCAACGTTGGGGCCAGGCCAGGCTGTCGCT
GGCTCTATCCAGCCCCTCAGTGTCAAGCACTGGCTGGAAGTCTGAGTCCCAACAGGTGACAGGAACCA
CTTTGCAAGTCCCTGGTCCGGTGGCCATCAACAGATTTCCCTGGTGGACAACAGCAGAACCCAGGCCA
GCCACTAACAGCAGCAGTATCCGGCCGCGGAAGACTAGCTCCTTAGCGCTCTTCTTTAGAAAGGTTTAC
TACTTAGCCGGTGTCCGCTTCAGATCTTTGTATAAACTAGATATTTAGATGAAGTGAAGAAAAAA
TTTGGACCTGCTTTGAATTCTCTATAATCCAGTGCACCGAACTTATGATGGACAGACATCTGGACCAGT
GTTGATGTGTGCCATTTATGTGATGGCAAAGGTCACAAAAGAAGACAGGTCCTTCCAGAACATCATGCGT
TGTTACAGAACTCAGCCACAGGCCCGGAGCCAGGTGTACAGAAGTGTCTTGATAAAAGGGAAAAAGAAGAA
ACTCTGGCAGCAGTGAGAGCAGAAGCCATCAGAATTCCTCAACCGAACTAAATACAGACAGAGCCAGTAG
AGATTCAGCCCAGTGTAGAGTCAAACAGCACCTACCAGTCCACAGCCCAGCAGTCCCCTCCTACA
CCAACCTCGACTCACGGGTGCCAGCAGTGACGTTGAAGAGGAGGAACGAGGAGACCTATTGAGTTTACA
ACAACCTATAGGAAGCAAATCCAAGCGTTTGCATGAAGTACTCGCAGGCAACCGCAGCAGGACAC
TCCCTCCCTCTCCCTATCCATTTGTAAGAAGCAGGCTCCCTCGCCGAGTACAGTTATCTCAAAGTCAT
CCTATCTACATTTCCCCACATAACAACGAAGCAATGCCTTCTCCTCGAGAGAAGATTTTTACTACTTCA
GCAACAGCCCATCAAAGAGACTGAGGAAATCAACAGTATGATACGGACAGGAGAGACTCCAATAAAAA
GAGAGGGATTCTTGGACGACGGAAGTGAATCACCTGCAAAAAGAATCTGCCAGAGAATCACTCTGCT
CTGTTACGTCGCTCCAGGATGTGGCGAATGACCGAGGTTACAG
    
```

ACGCGTACGCGGCCGCTCGAG - GFP Tag - GTTTAA

Protein Sequence:

>MG211690 representing NM_011250
 Red=Cloning site Green=Tags(s)

```

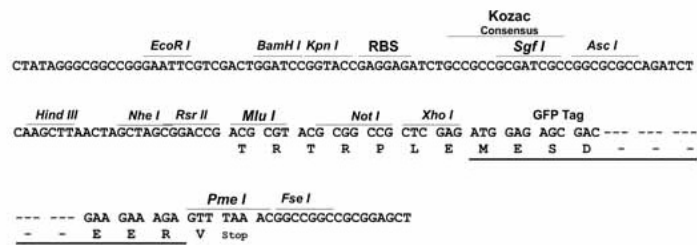
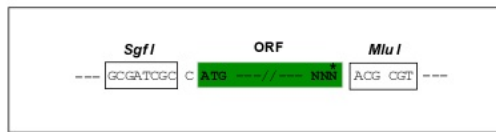
MASGGNQSPPPPPAAAASSEEEEEEDGDAADRAQPAGSPSHQIQQRFEELCSRLNMDEAARAEAWSSYRSM
SESYTLEGNDLHWLACALYVACRKSVPVTVSKGTAEGNYVSLTRILRCSEQSLIEFFNKMKKWEDMANLPP
HFRERTERLERNFTVSAVIFKKYEPIFQDIFKYPQEEQPRQQRGRKQRRQPCTTSEIFHFCWVLFYAKG
NFPMSIDDLVNSYHLLCALDLVYGNALQCSNRKELVNPNFKGLSEDCHPKDSKASSDPPCVIEKLSLH
DGLVLEAKGIKEHFWKPYIRKLFKLLKGKEENLTGFLEPGNFGESFKAVNKAYEYVLAAGNLDERVF
LGEDAEVEVGTLSRCLSAASGTEAERTQMRDILQQHLDKSKALRVCTPLTGVRVYVQENSPCVTPVSTAA
HSLSRHTMLSGLRNAPSEKLERILRCSRDPQTQAIADRLKEMYEYISQHFQPDENFSNCAKEIANKHFR
FAEMLYYKVLSEVIEQEQRKLDGMDLSGVLEHDAFHRSLLACCLEVVAFSHKPPGNPFIAEIFDVPYHY
FYKVIEVFIIRAEDGLCREVVKHLNQIEEQILDHLAWKTKSPLWDRIRDNENRVPTCEEVMPQNLERDE
IYIAGSPLTPRRVGEVRADAGGLGRSITSPPTLYDRYSSPTVSTTRRRLFENDSPSEGSTSGRIPPQPLV
NAVVPQNVPGETVSVTPVPGQTLVTMATATVTANNGQVTIPVQGANENGGITFFPVQVNVGGQAQAVA
GSIQPLSAQALAGSLSSQVVTGTLQVPGPVAIQIISPGGQQQNPQPLTSSSIRPRKTSLLALFFRKVY
YLAGVRLRDLCKILDISDELKIKIWTCEFSIIQCTELMMDRHLQDQLLMCAIYVMKVTKEDRSFQIMR
CYRTQPQARSQVYRSVLKIGKRRNSGSSESRSHQNSPTELNDRASRDSSPVMRSNSTLPVPQPSAPPT
PTRLTGASSDVEEEERGLIQFYNNIYRKQIQAFAMKYSQANAQTDTPPLSPYPFVRTGSPRRVQLSQSH
PIYISPHNNEAMPSPREKIFYFYSNSPSKRLREINSMIRTGETPTKKRGILLDDGSESPAKRICPENHSA
LLRRLQDVANDRGSQ
    
```

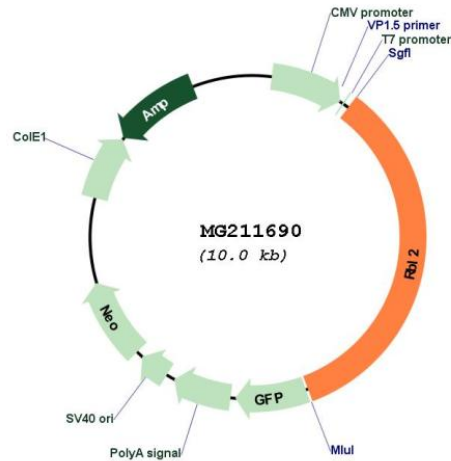
TRTRPLE - GFP Tag - V

Restriction Sites: SgfI-MluI

Cloning Scheme:

Cloning sites used for ORF Shutting:



Plasmid Map:


ACCN: NM_011250

ORF Size: 4932 bp

OTI Disclaimer: The molecular sequence of this clone aligns with the gene accession number as a point of reference only. However, individual transcript sequences of the same gene can differ through naturally occurring variations (e.g. polymorphisms), each with its own valid existence. This clone is substantially in agreement with the reference, but a complete review of all prevailing variants is recommended prior to use. [More info](#)

OTI Annotation: This clone was engineered to express the complete ORF with an expression tag. Expression varies depending on the nature of the gene.

Components: The ORF clone is ion-exchange column purified and shipped in a 2D barcoded Matrix tube containing 10ug of transfection-ready, dried plasmid DNA (reconstitute with 100 ul of water).

Reconstitution Method:

1. Centrifuge at 5,000xg for 5min.
2. Carefully open the tube and add 100ul of sterile water to dissolve the DNA.
3. Close the tube and incubate for 10 minutes at room temperature.
4. Briefly vortex the tube and then do a quick spin (less than 5000xg) to concentrate the liquid at the bottom.
5. Store the suspended plasmid at -20°C. The DNA is stable for at least one year from date of shipping when stored at -20°C.

RefSeq: [NM_011250.4](#), [NP_035380.3](#)

RefSeq Size: 4895 bp

RefSeq ORF: 3408 bp

Locus ID: 19651

UniProt ID: [Q64700](#)

Cytogenetics: 8 44.25 cM

Gene Summary:

Key regulator of entry into cell division. Directly involved in heterochromatin formation by maintaining overall chromatin structure and, in particular, that of constitutive heterochromatin by stabilizing histone methylation. Recruits and targets histone methyltransferases KMT5B and KMT5C, leading to epigenetic transcriptional repression. Controls histone H4 'Lys-20' trimethylation. Probably acts as a transcription repressor by recruiting chromatin-modifying enzymes to promoters. Potent inhibitor of E2F-mediated trans-activation, associates preferentially with E2F5. Binds to cyclins A and E. Binds to and may be involved in the transforming capacity of the adenovirus E1A protein. May act as a tumor suppressor.[UniProtKB/Swiss-Prot Function]