

## Product datasheet for **MG211685**

### Smg7 (NM\_001005507) Mouse Tagged ORF Clone

#### Product data:

Product Type:	Expression Plasmids
Product Name:	Smg7 (NM_001005507) Mouse Tagged ORF Clone
Tag:	TurboGFP
Symbol:	Smg7
Synonyms:	9430023P16Rik; mKIAA0250
Mammalian Cell Selection:	Neomycin
Vector:	pCMV6-AC-GFP (PS100010)
E. coli Selection:	Ampicillin (100 ug/mL)
ORF Nucleotide Sequence:	>MG211685 representing NM_001005507 Red=Cloning site Blue=ORF Green=Tags(s)

TTTTGTAATACGACTCACTATAGGGCGGCCGGAATTCGTCGACTGGATCCGGTACCGAGGAGATCTGCC  
GCC**CGATCGCC**

ATGAGCCTGCAGAGCGCGCAGTATCTCCGGCAGGCAGAAAGTCTGAAGGCTGAAATGACAGATTCTAAGC  
TGGGTCCGGCTGAGGTCTGGACATCCAGGCAAGCTCTGCAGGACTTGACCAGAAAATGCTAGTTACTGA  
TCTGGAATACGCTTTAGACAAGAAAGTAGAACAGGATCTCTGGAATCATGCCTTTAAGAATCAGATCACA  
ACACTGCAAGGCCAAGCCAAGAATCGAGCAAACCCAAATCGAAGTGAAGTCCAGGCAAACCTTTCTCTGT  
TCCTAGAGGCAGCTAGCGGCTTCTATACTCAGTTATTACAGGAACTGTGTACGGTGTAAATGTAGATTT  
GCCATGCCGTGTGAAGTCTTCCAGTTGGGAATTATTAGCAATAAACAGACGCACAGCAGCACCATAGTG  
AAGCCACAGTCTAGCTCCTGCTCCTACATTTGCCAACACTGCCTCGTCCACCTTGAGACATTGCTCGAT  
ACAGAAATCAGACTAGCCAGGCAGAGTCTACTATAGGCATGCAGCTCAGCTTGCCCTCCAATGGTCA  
GCCTTACAATCAGTTGGCTATCTTAGCTTCTTCCAAGGAGACCCTGACCACAATTTTCTACTACTGC  
AGAAGCATTGCTGTGAAATCCCTTTCCAGCTGCCTCCACTAATCTACAAAAAGCACTTTCTAAAGCAC  
TGGAAAGCCGGGATGAGTTGAAAACCAAGTGGGGTGTCTTGACTTCATCAAGGCCTTTATTAATTTCCA  
CGGTATGTATACCTGAGTAAGAGTTGGAAAAGCTGAGCCCTCTCGAGAGAAGTTGGAAGAACAGTTT  
AAGAGACTGCTGTTCCAAAAGGCTTTCAACTCTCAACAGTTAGTTCATGTCAGTTCATTAACTGTTTC  
AACTTCATCATCTTCGTGACTTTAGCAATGAAACAGAGCAACACAGTTACAGCCAAGATGAACAGCTGTG  
TTGGACACAGTTGCTGGCCCTCTTATGTCTTTCTCGGCATCCTGTGCAAATGTCCTCTCCAGAATGAT  
TCTCAGGAGTCCAACAATGCCTACCCCTTCTGCAGTCAAGGTCTCCATGGACTGGCTAAGACTCCGAC  
CTAGAGTCTTTCAAGAAGCAGTGGTGGATGAAAGACAGTACATTTGGCCCTGGCTAATTTCTCTTAA  
TAGTTTCCATCCCGTGAAGATGATCTCTCAAATACTAATGCCACACCACTTCCAGAGGAGTTTGAATTA  
CAAGGATCTTGGCTTTAAGACCTTCTTTCAGGAACTGGATTTTCCAAAAGGCCATCAGGGTATTACAG  
GAGACAAAAGGGTCAACAACGACGAATACGACAGCAGCGTTTGATCTCCATAGGAAATGGATTGCTGA  
TAACCAGCCACGGCTGATTCAGTGTGAAAATGAGGTAGGAAATGTTATTTATCACAGAAATCCAGAA



[View online »](#)

TTAATACTAGAAGACCCAGTGAAGCCAAAGAGAACCTCATCCTACAAGAAACATCTGTGGTAGAGTCAC  
 TGGCTACGGATGGGAGCCAGGACTGAAATCAGTGCTGTCTACAGGCCGAAATCCAAGCAACAGCTGTGA  
 CTCAGGAGAGAAACAGTGGTCACTTTAAAGAGAACATTAAGCCACGAGAAGTGAACCAAGGAAGAAGC  
 TTTCTCCCAAAGAGGTGAGAAGGGACTGTAGCAAAGCGTAACCTGTAACCTCAGGAGGACGGACAGAAGG  
 ACAGCAGCAAGAGGAGAGCTGAGACCAAGAGATGCACCTTAGGAAAGTTGCAGGAAACAGGAAAGCAGAG  
 TGTGGCAGTGCAGGTAATAATCCCAGACAGAATAAGAAAGACTCCAGTGTCTGAAGCCAGGAAACGCCT  
 GTCACCTAAACTCCAAGTCAAACGAGTAATTCTCAGTTTCACTCCCATCCATCACCTGGAGCCTTCCCTC  
 CTCTTCCAGCCGACAGGATCCCGCCCAACATATGTTATCCCCCTCTGTGGCATTTCATGTTGGG  
 CTCAGGTTACACCTTCCAGCTGGTGTCTGTCCAGGAACCTTCTTTCAGTCTACAGCTCACTCTCCA  
 GCAGGAAACCAGGTGCAAGCTGGGAAACAGTCCCACATTCCTTACAGCCAGCAACGGCCCTCTGGACCAG  
 GGCCAATGAACCAGGGACCTCAACAGTACAGCCACCTTCCAGCCACCCCTTACATCTTACCAGCTCA  
 GCCAACAGCAGTCTACAAGCCAATTGCAGGTTCAAGCTCTAGCTCAGCAACAGCAATCCCCTACAAAA  
 GTCATACCAGCTTTGGGAAAAGCCGCTCACCCTCTGGATTCCAGCAGTATCAACAGGCAGATGCCT  
 CCAAACAGCTGTGAATCCCCCTCAGGTTCAAAGCCACTAGGGAAAATTATGCCTGTGAAACAGTCTTA  
 CTACCTTCAGACCAAGACCCTATAAACTGTTTGAAGCCGTCATTGCAACCTCCTGTAATACAGCAGCAG  
 CCTCTAGAGAAAAAATGAAGCCTTCCCATGGAGCCATATAACCATAATCCCTCAGAAGTCAAGGTCC  
 CAGAGTCTACTGGGATTCTTCTACAGCATGGCCGATAACAGAGCAGTAATGGCTCAGCAACCAATAT  
 GGACCGCAGGAGCAAACGGTCACTGGAGTCTTCCGTCCAGAACAGGATCCTGTGCCCAGGATGCCATTT  
 GAGAAATCCTTATTGGAGAAGCCTTCTGAGCTCATGTCACATTCATCTTCTTCTGTCCCTCACGGGT  
 TCTCTGCAATCAGGAAAGATATCCAAACAGCAGTATGTTCAATGAAGTGTATGGAAAAACCTGACAAC  
 CAGCTCCAAGGCAGAAGTGAACCCCTCAGTCGCTCCAGGAAACATCACTGTACTCCCTTTTGAAGGG  
 ACCCATGGTCTCCATCACTTCTGCCAGTTCAGATCATTGACACCAGCCAGCCAGTCTCCTCATTCTCT  
 CTAACCAAGCAGCTGCCAGTCTCCTCCAACGCATAACCATAATTCTGCTCCATTCTAATTTTGG  
 ACCATTGGGACTCCAGATAACAGGGATAGGCGGCTGCAGATAGGTGGAAAACTGATAAACCCAGCCATG  
 GGTGGTTTTGGTGTGATTATCTCTCAGCAACGTATCATCTGAGAGCAGTTGGCATCAGGCTAGCACTC  
 CGAGTGGCACCTGGACAGGCCACGGCCCTCCATGGAGGATTCCTCTGCTGCTCATGAAAGCCTAA  
 GTCTATCTGGTCCAGTTCATGATGCATCCTGGCCCTCCGCTCTGGAGCAGTTGTTAATGCAGCAGAAG  
 CAGAAACAGCAGCGGGACAAGGTGCCATGAACCTCCACAC

ACGCGTACGCGGCCGCTCGAG – GFP Tag – GTTTAA

**Protein Sequence:**

>MG211685 representing NM\_001005507  
 Red=Cloning site Green=Tags(s)

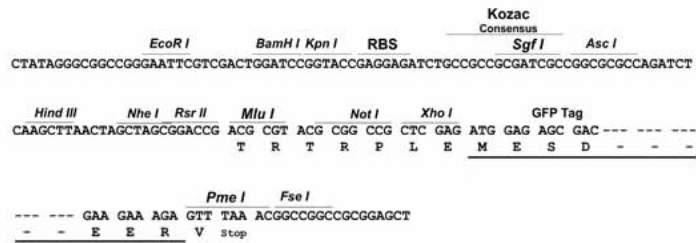
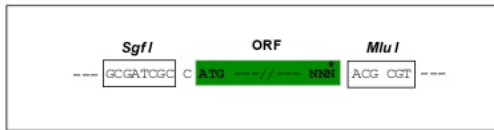
MSLQSAQYLRAEVLKAEMTDSKLGPAEVWTSRQALQDL YQKMLVTDLEYALDKKVEQDLWNHAFKNQIT  
 TLQGQAKNRANPNRSEVQANLSLFL EAAAGFYTQLLQELCTVFNVDLPCR VKSSQLGIISNKQTHSSTIV  
 KPQSSSCSYICQHCLVHLGDIARYRNQTSQAESYRHAALVPSNGQPYNLAILASSKGDHLTTIFYYC  
 RSI AVKFPFPAASTNLQKALSKALESRDELKTKWGVSDFIKAFIKFHGHVYLSKSLEKLSPLREKLEEQF  
 KRLLFQKAFNSQQLVHVTVINLFLHHLRDFSNETE QHSYSQDEQLCWTQLLALFMSFLGILCKCPLQND  
 SQESNNAYPLPAVKVSMDWLRLRPRVFQEA VVDERQYIWPWLSILLNSFHPREDDL SNTNATPLPEEFEL  
 QGFLALRPSFRNLDFSKGHQGITGDKQRRIRQRLISIGKWIADNQPRLIQ CENEVGKLLFITEIPE  
 LILEDPSEAKENLILQETSVVESLATD GSPGLKSVLSTGRNPSNSCDSGEEKPVVTFKENIKPREVNQGRS  
 FPPKEVRRDCSKGVTVTQEDGQKDSKRRAETKRCTLGK LQETGKQSVAVQVKSQTEL RKTPTVSEARKTP  
 VTQTPSQTNSQFPIIHHPGAFPLPSRPGFPPT YVIPPVAFSMGSGYTFPAGVSVPGTFLQSTAHSP  
 AGNQVQAGKQSHIPYSQQRPSGPGPMNQGPQS QPPSQPPLTSLPAQPTAQSTSQLQVQALAQQQSPTK  
 VIPALGKSPPHSGFQQYQQADASKQLWNPPQVQ SPLGKIMPVKQSYLLQTDPIKLFEP SLQPPVIQQQ  
 PLEKMKPFPMEPYNHNPSEVKVPEFYWDSSYSMADNR AVMAQQPNMDRRSKRSPGVFRPEQDPVPRMPF  
 EKSLLEKPSLEMSHSSFLSLTGF SVNQERYPNSSMFNEVYGKNLTTSSKAELNPSVASQETSLSYLFEG  
 TPWSPSLPASSDHSTPASQSPHSSNPSSLPSSPPTHNHNSAPFSNFGPIGTPDNRRR PADRWKTDKPMAM  
 GGFVDYLSATSSSESSWHQASTPSGTWTGHGPSMEDSSAVLMESLKSISWSSMMHPGPSALEQLLMQQK  
 QKQQRGGAMNPPH

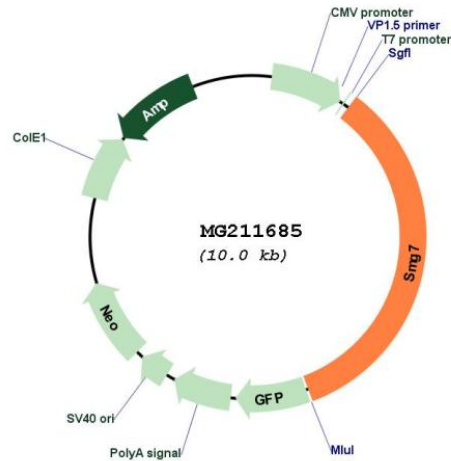
TRTRPLE – GFP Tag – V

Restriction Sites: SgfI-MluI

Cloning Scheme:

Cloning sites used for ORF Shutting:



**Plasmid Map:**


**ACCN:** NM\_001005507

**ORF Size:** 3402 bp

**OTI Disclaimer:** The molecular sequence of this clone aligns with the gene accession number as a point of reference only. However, individual transcript sequences of the same gene can differ through naturally occurring variations (e.g. polymorphisms), each with its own valid existence. This clone is substantially in agreement with the reference, but a complete review of all prevailing variants is recommended prior to use. [More info](#)

**OTI Annotation:** This clone was engineered to express the complete ORF with an expression tag. Expression varies depending on the nature of the gene.

**Components:** The ORF clone is ion-exchange column purified and shipped in a 2D barcoded Matrix tube containing 10ug of transfection-ready, dried plasmid DNA (reconstitute with 100 ul of water).

**Reconstitution Method:**

1. Centrifuge at 5,000xg for 5min.
2. Carefully open the tube and add 100ul of sterile water to dissolve the DNA.
3. Close the tube and incubate for 10 minutes at room temperature.
4. Briefly vortex the tube and then do a quick spin (less than 5000xg) to concentrate the liquid at the bottom.
5. Store the suspended plasmid at -20°C. The DNA is stable for at least one year from date of shipping when stored at -20°C.

**RefSeq:** [NM\\_001005507.2](#)

**RefSeq Size:** 5840 bp

**RefSeq ORF:** 3405 bp

**Locus ID:** 226517

**UniProt ID:** [Q5R1H6](#)

**Cytogenetics:** 1 G3

**Gene Summary:**

Plays a role in nonsense-mediated mRNA decay. Recruits UPF1 to cytoplasmic mRNA decay bodies. Together with SMG5 is thought to provide a link to the mRNA degradation machinery involving exonucleolytic pathways, and to serve as an adapter for UPF1 to protein phosphatase 2A (PP2A), thereby triggering UPF1 dephosphorylation (By similarity). [UniProtKB/Swiss-Prot Function]