

Product datasheet for **MG211683**

Zfpm2 (BC059241) Mouse Tagged ORF Clone

Product data:

Product Type:	Expression Plasmids
Product Name:	Zfpm2 (BC059241) Mouse Tagged ORF Clone
Tag:	TurboGFP
Symbol:	Zfpm2
Synonyms:	FOG-2, FOG2, B330005D23Rik
Mammalian Cell Selection:	Neomycin
Vector:	pCMV6-AC-GFP (PS100010)
E. coli Selection:	Ampicillin (100 ug/mL)
ORF Nucleotide Sequence:	>MG211683 representing BC059241 Red=Cloning site Blue=ORF Green=Tags(s)

TTTTGTAATACGACTCACTATAGGGCGGCCGGAATTCGTCGACTGGATCCGGTACCGAGGAGATCTGCC
GCC**CGATCGCC**

ATGTCCCGCGAAAGCAGAGTAAACCCCGGCAGATCAAACGGCCGCTGGAAGATGCCATCGACGACGAGG
AAGAAGAGTGTCCGGTGGAGGAAGCCGAAGTCATCTCGAAAGGCGACTTCCACTGGAGGGAAGCTTCCC
CGCAGGCTTTGAGCCGAAAATCTGAGCTGCGAAGACGTGGAGTTCTTTGTAACAAAGGTGATGACGAA
GGAATCCAGGAGCCAGCAGAATCAGATGGGACAGCCATTAGACAAACCAGGACAGCCTGGGGTAGAGA
CAGATGACTGGGATGGACCAGGAGAGCTAGAAGTGTTCAGAGAGATGGAGAAAGGAAGATTCAGAGTCCG
GCAGCAACTTCCGGTGGGAACAACCTGGGGCCCTTTTGCTGGGAAGATGGACTTGAACAATAATTCCTTG
AAGACGAAGGCTCAGGTCCCATGGTGTGACTGCTGGTCTAAATGGCTTCTGGATGTGACATGGCAAG
GAGTGGAAAGACAGCAAAAACAACCTGCATTGTGTACAGCAAAGGGGGCCAACCTTTGGTGCACCACAACGAA
GGCCATCTCAGAGGGTGAAGAGCTCGTCGCCTTTGTGGTGGACTTTGACTCAAGGCTACAAGCTGCTAGT
CACATGACTCTCACCGAAGGGATGTACCCTGCCCGCTGCTGGACTCGATTAGCTGCTTCTCAGCAAG
CTGCCATGGCTTCTATTTGCCTACAGCTATTGTCAATAAGGATATATCCCTTGCAAGTCTGTGGCAT
CTGGTACCGGAGCGAGCGGAACCTGCAAGCCATTTGATGTACTACTGTAGTGGGAGGCAACGAGAAGCT
GCTCCAGTGTGAGAAGAAAATGAAGACAACCTCGCATCAGTTCAGCCTGTGCCCTTCCACAATGCA
CCAAGAGCTTTTCCAATGCCGAGCTCTAGAAATGCACCTGAATTCACACAGTGGTGTGAAAATGGAAGA
GTTCTGCCCCCTGGGGCGAGTTTAAAATGCACGGTCTGTAGCTACACTGCTGATTCTGTGATCAACTTC
CACCAACACCTGTTCTCGCATCTCACTCAAGCCGCTTCCGATGCAACCACTGCCATTTTGGCTTTCAGA
CCCAGAGGGAGCTACTGCAGCACTCTCCAAGTGGAAACGGAAGACAGCTTACAGCCAGCCACAGATTTGTT
GGCCAGAAGTACCTCTCCAGAGCCAAAAGGCCATGCCGACTAAGGATGCAAGCTCAGACACAGAGCTG
GACAAGTGTGAGAAAAAGACTCAACTCTTCTCACCATCAGAGACCAGAGATCCAGCCTGCAGCCAACA
AGCAAACTTCTTTACAAAAATAAAGTCTGAGCCCTCCAGTCCAGACTCGCCTCATCTCCAGTGA
ACCAACATCGGGCCCTTTTCCCTGTGGACCTTTCCTGTCTCAGTTTCTTTCCCAAGATATCAGC



[View online »](#)

ATGGTCCCTCAGGCTTCAGAGATCTTGGCGAAGATGTCCGAGCTGGTGCACCGTCGACTGAGGCATGGGA
 GTAGTAGCTACCCCTCTGTGATTTACAGCCCTTTGATGCCCAAAGGGGCTACGTGCTTTGAGTGTAAACAT
 AACATTCAATAATTTGGATAACTATCTAGTTTCATAAAAAGCACTACTGCAGCAGCAGATGGCAGCAGATG
 GCCAAATCCCCTGAGTTTCCAAGTGTCTGAAAAATGCCTGAGGCTGTGAGTCTAACACTGGCCAGA
 CTTCCATAAACCTTCTTAACCCAGCCGCTCATTTCATCGGACCCAGAGAACCCACTCCTTCAACATCCTG
 CATCAACTCTCCACCGTTTTAGATTTGATTGGCCAAACGGGAAAGGCCATGAGAAGGACTTTTCCACT
 CAAGTCAAAAAGTTGCCACCTCCAACAGTAGTGACGACAAAATAAACGGAAGCCCTGTTGATGAAAA
 ATCCCAGCGTCCCTTAGTGGATGGGAAAGTGACCCAAATAAGACTACCTGTGAAGCTTGTAAACATCAC
 CTTTAGCAGGCATGAAACCTATATGGTCCACAAAACAGTATTACTGTGCAACACGCCATGACCCTCCGCTA
 AAGAGGTCTGCTTCCAACAAAGTGCCGGCCATGCAGAGAACCATGCGCACACGCAAGCGAAGAAAGATGT
 ACGAAATGTGCCTACCTGAGCAGGAACAGCGGCCGCCCTGGTCCAGCAGAGATTTCTTGATGTAGCCAA
 CCTAAGCAATCCTGTAGCTCCACTCAAGAGCCACCGAAGGGCTAGGAGAATGTACCACCAAGATGC
 GACATCTCCAGGAATGTCTTAAGCACTTGGAAACATCATTGGCCATGAACAAATGTGTTCCGGTTC
 CCAAGTGTGACACGACCCATTCCAATGTTTCTGCTTGGAGATGGATGTCCCTATAGATCTCAGCAAAAA
 GTGTTTATCGCAGTCTGAGCGGACGACAGCATCTCCTAAGAGGCTACTAGACTACCAGAGTGCACAGTG
 TGCAAGATCAGCTTCAATAAGGTGAGAACTATCTGGCGCACAAGCAGAAATTTCTGCCCTGTCACTGCAC
 ATCAGCGTAATGACCTGGGTGAGCTTGTGGTAAAGTGTTCGAATCCGAAAGTGAACGGAGCAGCCC
 TGAAGTCACTTTGAAAGAAACATGATCAAATGTGAGAAGATGGGAATCCAAAGCAACCATCTCCCAAC
 GGAAATTTGTTTTATCCCACTTGGCAACCTTGAAGGCCCTGAAAGTCTTCAGCGAAGCAGCTCAGCTCA
 TTGCTACAAAAGAAGAAAACAAACATTTGTTTCTTCCCAATGCCTTTACCCTGGAGCAATAAAGAAGAC
 AAAAGGAGCTGACCAACTTTCTCCATACTATGGGATAAAGCCAAGCGATTATATCGCCAGTCTCTTGTG
 ATCCACAACACTGACGTGAACAAAGCACAATAACAGAAAATGAATCTCCTAAAGGCCAGGCCTCCTCAA
 ATGGGTGTGCCGTACCCAAGAAAGATTCTGCCATTGTTGCCAAAAACAGAGGCATGTCATAGTGA
 TGGTGGACTCAAGCAAGATGAAAGACCTACGGCCAACCCACAGCAAGAGAACATTTCCAGAAATCCCGAG
 CACGAAGATGGCCACAAATCCCCTTCGTGGATCTCTGAGAACCATTAGCTGCAAATGAGAAATGTCTCCC
 CAGGAATTCCTGCGCAGAAAGACAGTTGTCTAGCATAGCAAAAGGTGTGAATGGCGCCAGCCAGGCTCC
 CAGCAGTGGAAAAACTGCCGGCTATGCGATATTCAGTTCAATAATCTTTCGAACCTTTATAACTCACAAG
 AAGTTTTATTGCTCATCATGCAGCAGAACATGTCAA

ACGCGTACGCGGCCGCTCGAG – GFP Tag – GTTTAA

Protein Sequence:

>MG211683 representing BC059241
 Red=Cloning site Green=Tags(s)

MSRRKQSKPRQIKRPLEDAIDDEEECPVEEA E V I S K G D F P L E G S F P A G F E P E N L S C E D V E F F C N K G D D E
 G I Q E P A E S D G S H S D K P G Q P G V E T D D W D G P G E L E V F Q R D G E R K I Q S R Q Q L P V G T T W G P F A G K M D L N N N S L
 K T K A Q V P M V L T A G P K W L L D V T W Q G V E D S K N N C I V Y S K G G Q L W C T T T K A I S E G E E L V A F V V D F D S R L Q A A S
 H M T L T E G M Y P A R L L D S I Q L L P Q Q A M A S I L P T A I V N K D I F P C K S C G I W Y R S E R N L Q A H L M Y Y C S G R Q R E A
 A P V S E E N E D N S H Q V S S L C P F P Q C T K S F S N A R A L E M H L N S H S G V K M E E F L P P G A S L K C T V C S Y T A D S V I N F
 H Q H L F S H L T Q A A F R C N H C H F G F Q T Q R E L L Q H S P S G T E D S L Q P A T D L L A R S D L S Q S Q K A M P T K D A S S D T E L
 D K C E K K T Q L F L T N Q R P E I Q P A A N K Q N F S Y T K I K S E P S S P R L A S S P V Q P N I G P S F P V G P F L S Q F A F P Q D I T
 M V P Q A S E I L A K M S E L V H R R L R H G S S Y P P V I Y S P L M P K G A T C F E C N I T F N N L D N Y L V H K K H Y C S S R W Q Q M
 A K S P E F P S V S E K M P E A V S P N T G Q T S I N L L N P A A H S S D P E N P L L Q T S C I N S S T V L D L I G P N G K G H E K D F S T
 Q V K K L P T S N S S D D K I N G K P V D V K N P S G P L V D G E S D P N K T T C E A C N I T F S R H E T Y M V H K Y Y C A T R H D P P L
 K R S A S N K V P A M Q R T M R T R K R R K M Y E M C L P E Q E Q R P P L V Q Q R F L D V A N L S N P C S S T Q E P T E G L G E C Y H P R C
 D I F P G I V S K H L E T S L A M N K C V P V P K C D T T H S N V S C L E M D V P I D L S K K C L S Q S E R T T A S P K R L L D Y H E C T V
 C K I S F N K V E N Y L A H K Q N F C P V T A H Q R N D L G Q L D G K V F P N P E S E R S S P E V S F E R N M I K C E K N G N P K Q P S P N
 G N L F S S H L A T L Q G L K V F S E A A Q L I A T K E E N K H L F L P Q C L Y P G A I K K T K G A D Q L S P Y Y G I K P S D Y I A S S L V
 I H N T D V E Q S T N T E N E S P K G Q A S S N G C A V P K K D S L P L L P K N R G M V I V N G G L K Q D E R P T A N P Q Q E N I S Q N T Q
 H E D G H K S P S W I S E N P L A A N E N V S P G I P C A E E Q L S S I A K G V N G A S Q A P S S G K Y C R L C D I Q F N N L S N F I T H K
 K F Y C S S H A A E H V K

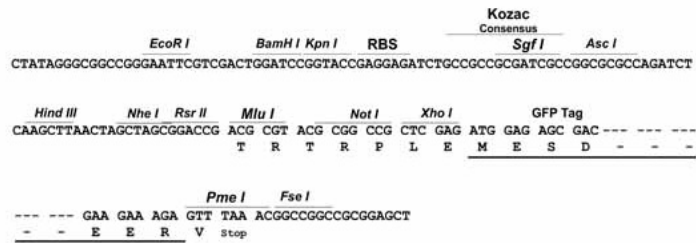
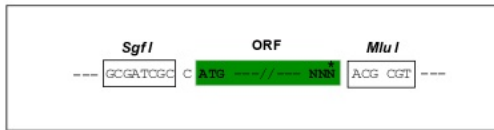
TRTRPLE – GFP Tag – V

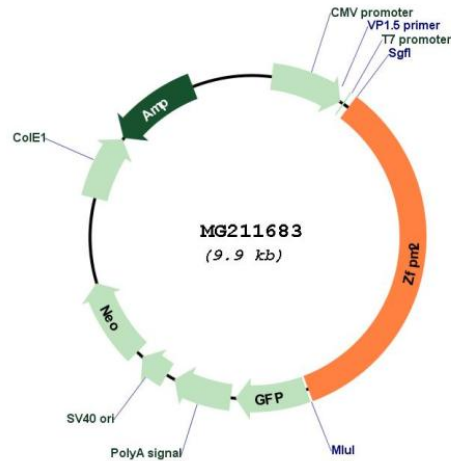
Restriction Sites:

SgfI-MluI

Cloning Scheme:

Cloning sites used for ORF Shuttling:



Plasmid Map:


ACCN: BC059241

ORF Size: 3399 bp

OTI Disclaimer: The molecular sequence of this clone aligns with the gene accession number as a point of reference only. However, individual transcript sequences of the same gene can differ through naturally occurring variations (e.g. polymorphisms), each with its own valid existence. This clone is substantially in agreement with the reference, but a complete review of all prevailing variants is recommended prior to use. [More info](#)

OTI Annotation: This clone was engineered to express the complete ORF with an expression tag. Expression varies depending on the nature of the gene.

Components: The ORF clone is ion-exchange column purified and shipped in a 2D barcoded Matrix tube containing 10ug of transfection-ready, dried plasmid DNA (reconstitute with 100 ul of water).

Reconstitution Method:

1. Centrifuge at 5,000xg for 5min.
2. Carefully open the tube and add 100ul of sterile water to dissolve the DNA.
3. Close the tube and incubate for 10 minutes at room temperature.
4. Briefly vortex the tube and then do a quick spin (less than 5000xg) to concentrate the liquid at the bottom.
5. Store the suspended plasmid at -20°C. The DNA is stable for at least one year from date of shipping when stored at -20°C.

RefSeq: [BC059241.1](#)

RefSeq Size: 4832 bp

RefSeq ORF: 3401 bp

Locus ID: 22762

Cytogenetics: 15 15.74 cM

Gene Summary:

Transcription regulator that plays a central role in heart morphogenesis and development of coronary vessels from epicardium, by regulating genes that are essential during cardiogenesis. Essential cofactor that acts via the formation of a heterodimer with transcription factors of the GATA family GATA4, GATA5 and GATA6. Such heterodimer can both activate or repress transcriptional activity, depending on the cell and promoter context. Also required in gonadal differentiation, possibly be regulating expression of SRY. Probably acts a corepressor of NR2F2.[UniProtKB/Swiss-Prot Function]