

Product datasheet for **MG211682**

Polr3b (NM_027423) Mouse Tagged ORF Clone

Product data:

Product Type:	Expression Plasmids
Product Name:	Polr3b (NM_027423) Mouse Tagged ORF Clone
Tag:	TurboGFP
Symbol:	Polr3b
Synonyms:	2700078H01Rik; A330032P03Rik; C85372; RPC2
Mammalian Cell Selection:	Neomycin
Vector:	pCMV6-AC-GFP (PS100010)
E. coli Selection:	Ampicillin (100 ug/mL)
ORF Nucleotide Sequence:	>MG211682 representing NM_027423 Red=Cloning site Blue=ORF Green=Tags(s)

TTTTGTAATACGACTCACTATAGGGCGGCCGGAATTCGTCGACTGGATCCGGTACCGAGGAGATCTGCC
GCC**CGATCGCC**

ATGGATGTTCTAGCCGAGGAGTTCGGGAGCCTGACTCCGGAGCAGCTGACTGCGCCGATCCCGACTGTGG
AGGAAAAATGGAGGCTGCTTCCAGCATTTTTAAAGGTTAAAGGCCTGGTAAAACAGCACATAGACTCCTT
TAATAATTTTCAATGTAGAGATAAAGAAGATAATGAAAGCAATGAAAAGGTTACAAGTATGCTGAC
CCCATGTGGTACTTAAAATACCTAATATCTATGTCGGACTTCCTGATGTTGAAGAAAGCTTCAATGTAA
CTAGACCAGTGTCCCTCATGAGTGCCGTCTGAGGGACATGACGTAATCCGCCCAATCACAGTGGACAT
TGAGTATACCCGAGGCAGCCAGAGGATAATCCGCAACGCCTTACCCATTGGCAGAATGCCATCATGCTC
CGAAGCTCGAACTGTGTTCTAACAGGAAAACGCCGCGCAGAGTTTGCCAACTGAATGAGTGTCCACTAG
ACCCAGGTGGCTACTTCAATGTTAAAGGAGTGGAAAAAGTCACTTATCCAAGAGCAGCTGTCCAAGAA
CAGGATCATTGTGGAGGCCGACAGGAAAGGAGCCGTTGGAGCCTCAGTTACCAGCTCCACCCATGAGAAG
AAAAGCAGAACCAACATGGCCGTGAAACAGGGTCGATTCTATCTGAGGCACAACACCCTGTCTGAAGATA
TCCCCATTGTATCATATTTAAGCCATGGGTGTGGAGAGTGACCAGGAAATCGTGCAGATGATTGGAAC
AGAGGAGCACGTGATGGCTGCATTTGGGCCAGCTTGGAGGAGTGCCAGAAAGCTCAGATCTTCAACCCAG
ATGCAGGCATTGAAGTATATAGGGAATAAAGTAAGAAGACAAGAATGTGGGGAGGTGGACAAAGAAAA
CCAAAATAGAAGAAGCAAGAGAATCCTGGCTTCTACCATTCTGACCCAGTACCAGTGAAGGAATTCAA
TTTCCGAGCTAAGTGTATCTACACTGCAGTGATGGTGCGAAGGGTGATCTTGCCCAAGGAGATAACAAG
GTCGATGACAGAGACTATTATGGCAACAAACGACTGGAATTGGCAGGACAGCTCTTATCTTTTGT
AAGATTTGTTAAAAAGTTAATTCAGAAATGAAGAAGATTGCAGACCAAGTGAATCCTAAACAGAGAGC
AGCCAGTTTGACGTCGTTAAACACATGCGCAAGACCAGATTACCAACGGCATGGTCAATGCCATCTCC
ACGGGAAATGGTCTCTGAAGAGATTTAAGATGGACCGACAGGGTGTGACCCAGGTGCTGTCTCGTTGT
CATATATCTGCACTCGGCATGATGACAAGAATCTTCCAGTTTGAAAAGACGAGGAAAGTGAAGTGG
CCCTGTTCTCTGACCGCTCTCAGTGGGAATGCTCTGTCCCTCCGACACACTGAAGGGGAGGCTGT



[View online >](#)

```

GGTTTGGTTAAGAACTTGGCCCTCATGACACATATAACAACTGACATGGAAGATGGACCCATTATTAAGT
TAGCTGGGAAGCTGGGAGTAGAAGATGTGAATTTATTATGTGGAGAAGAGCTCTCTTACCCAAATGTGTT
TCTTGTCTTCTGAATGGTAACATCCTTGGTGTCAATCGAGACCATAAAAAGCTTGTGACACATTCCGG
CTGATGCGAAGAGCAGGCTATATCAATGAATTTGTTTCTATCTCCACAAACCTTACGGATCGCTGTGTTT
ATATTTCTCTGATGGCGGGCGCTTGTGCAGGCCTTACATAATTGTTAAGAAACAAAAGCCAGCTGTAC
AAATAAGCACATGGAAGAGTTGGCTCAAGGCTACAGGAATTTGAAGATTTCTTACATGAAAGTCTAGTT
GAATACTTAGATGTGAATGAAGAAAATGACTGTAAACATTGCGCTACGAACATACAATTAATAAGACA
CCACCCACTTGGAGATTGAACCTTCACTCTGCTTGGTGTGGTGGTGGCCGCTGATCCCATACCCCTATCA
CAACCAGTCTCCAAGAAACACCTACCAGTGTGCTATGGGCAAGCAAGCCATGGGTACCATTGGCTACAAT
CAACGGAACAGAATTGATACACTTATGTATCTACTAGCATATCCACAAAAGCCATGGTAAAAACAAAA
CAATCGAGTTGATAGATTTTGAAGATTGCCGGCTGGCCAGAACGCAACTGTTGCCGTGATGAGCTACAG
CGGCTATGACATTGAGGACGCGCTGTTTTGAACAAGGCCTCTCTGGACAGAGTTTTGGGCGTTGTCTT
GTGTATAAAAATGCTAAGTGCACCTTGAACGATACACCAATCAGACCTTGTATAAGGTGATGGTCCCA
TGTGGATGCTGCTACCAGAAAACCCATCTGGCGACATGAAATTTAGATGCAGATGGCATTGTCTCC
AGGTGAGAAAAGTGAAAACAAACAGGTGCTTGTAAACAAGTCCATGCCACAGTGACACAGATTCCTTTG
GAAGGGAGCAACGTGCCACAGCAACCACAGTATAAAGATGTGCCTATCAGTACAAGGTGCGACAGACT
CCTACATCGAAGAGTATGATCTCTTCCAACGCCGAGGATGCTTCTCATCAAGATGCTCCTGAGACA
GACGCGCGCCAGAGATTGGAGACAAATTCAGCAGTCGCCATGGACAAAAGGTGTCTGTGGCCTGATC
GTCCCCAGGAAGACATGCCGTTCTGTGATTCTGGCATCTGTCCCGACATCATAATGAACCCACACGGCT
TCCCATCAAGAATGACGGTTGGAAGTTAATTGAGCTGCTGGCTGGCAAGGCAGGCGTGTAGACGGCAG
GTTCCACTACGGCACTGCCTTTGGAGGGAGTAAAGTGAAGGATGTGTGTGAAGATCTCGTTCGCCATGGT
TACAACACTCGGGAAGGACTACGTCACCTCAGGCATCACAGGTGAGCCCTTAGAAGCATACATCTATT
TTGGACCTGTGATTATCAGAACTGAAACACATGGTGTGGATAAAAATGCACGCCGCGCCGAGGAGACC
ACGAGCTGCTCTTACCAGGCAGCCCACTGAAGGGCGGTGCGCGCATGGTGGCTTGGAGAAATG
GAACGCGACTGTCTAATCGGCTATGGAGCGAGTATGCTTTTGTGGAGAGACTAATGATCTCAAGTATG
CCTTTGAGGTTGACGCTGCGGGCAGTGTGGACTCCTGGGATATTCTGGCTGGTGCCTACTGCAAATC
TTCGTGCCACGTGCTCCCTCCGCATCCCGTATGCTGCAAGCTGCTCTCCAGGAGTTACAGTCCATG
AACATCATCCCCAGGCTGAAACTGGCCAAGTACAACGAG
    
```

ACGCGTACGCGGCCGCTCGAG – GFP Tag – GTTTAA

Protein Sequence:

>MG211682 representing NM_027423
 Red=Cloning site Green=Tags(s)

```

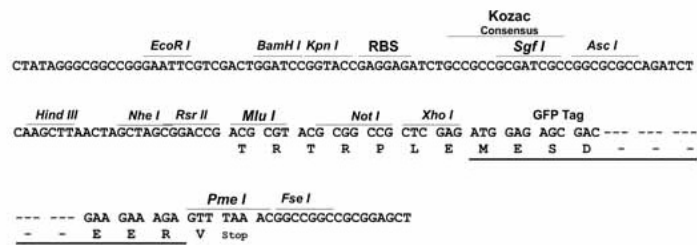
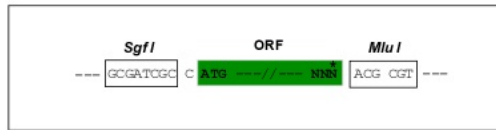
MDVLAEEFGLTPEQLTAPIPTVEEKWRLLPAFLKVKGLVKQHIDSFNYFINVEIKKIMKANEKVTSDAD
PMWYLKYLNIYVGLPDVEESFNVTRPVSPHECRLRDMTYSAPITVDIEYTRGSQRIIRNALPIGRMPIML
RSSNCVLTKGTPAEFAKLNCEPLDPGGYFIVKGVKIVILIQEQLSKNRIIVEADRKGAVGASVTSSTHEK
KSRTNMAVKQGRFYLRHNTLSEDIPIVIFKAMGVESDQEVQMIQTEEHVMAAFGPSLEECQAQIFFTQ
MQALKYIGNKVRQRQMWGGGPKTKIEEARELLASTILTHVPVKEFNFRACIYTAVMVRRVILAQGDNK
VDDRDYYGNKRELAGQLLSLLFEDLFFKFNSEMKKIADQVIPKQRAAQFDVVKHMRQDQITNGMVNAIS
TGNWSLKRFRKMDRQVTVLQVLSRLSYISALGMMTRISSQFEKTRKVSQPRSLQPSQWMLCPSDTPGEAC
GLVKNLALMTHITDMDGPIIKLAGNLGVEDVNLCCGEELSYPNVFLVFLNGNILGVIRDHKKLVSTFR
LMRRAGYINEFVSI STNLTDRCVYISSDGGRLCRPYIIVKKQKPAVTNKHMEELAQGYRNFEDFLHESLV
EYLDVNEENDCNIALYEHTINKDTHLEIEPFTLLGVCAGLIPYPHNNQSPRNTYQCAMGQAMGTIGYN
QRNRIDTLMYLLAYPQKPMVKTIELEIDFEKLPAGQNTAVVMSYSGYDIEDALVNLKASLDRGFGRCL
VYKNAKCTLKRYTNQTFDKVMGPMLDAATRKPWRHEILDADGICSPGEKVENKQVLVNSMPTVTQIPL
EGSNVPQPPQYKDVPIITYKGATDSYIEKVMISSNAEDAFLIKMLLRQTRRPEIGDKFSSRHGQKGCGLI
VPQEDMPFCDSGICPDIIMNPHGFPSRMTVGKLIELLAGKAGVLDGRFHYGTAFGGSKVKDVCEDLVRHG
YNYLGKDYVTSGITGEPLAAYIYFQPVYQKLVKHMVLDKMHARARGPRAVLTRQPTEGRSRDGGLRLGEM
ERDCLIGYGASMLLLERLMISSDAFEVDVCGQCGLLGYSGWCHYCKSSCHVSSLRIPYACKLLFQELQSM
NIIPRLKLAKYNE
    
```

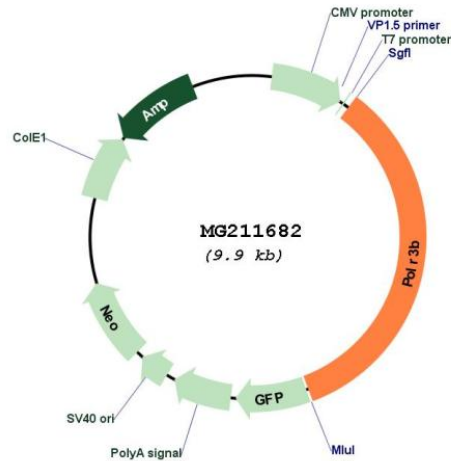
TRTRPLE – GFP Tag – V

Restriction Sites: SgfI-MluI

Cloning Scheme:

Cloning sites used for ORF Shuttling:



Plasmid Map:


ACCN: NM_027423

ORF Size: 3399 bp

OTI Disclaimer: The molecular sequence of this clone aligns with the gene accession number as a point of reference only. However, individual transcript sequences of the same gene can differ through naturally occurring variations (e.g. polymorphisms), each with its own valid existence. This clone is substantially in agreement with the reference, but a complete review of all prevailing variants is recommended prior to use. [More info](#)

OTI Annotation: This clone was engineered to express the complete ORF with an expression tag. Expression varies depending on the nature of the gene.

Components: The ORF clone is ion-exchange column purified and shipped in a 2D barcoded Matrix tube containing 10ug of transfection-ready, dried plasmid DNA (reconstitute with 100 ul of water).

Reconstitution Method:

1. Centrifuge at 5,000xg for 5min.
2. Carefully open the tube and add 100ul of sterile water to dissolve the DNA.
3. Close the tube and incubate for 10 minutes at room temperature.
4. Briefly vortex the tube and then do a quick spin (less than 5000xg) to concentrate the liquid at the bottom.
5. Store the suspended plasmid at -20°C. The DNA is stable for at least one year from date of shipping when stored at -20°C.

RefSeq: [NM_027423.2](#)

RefSeq Size: 4858 bp

RefSeq ORF: 3402 bp

Locus ID: 70428

UniProt ID: [P59470](#)

Cytogenetics: 10 C1

Gene Summary:

DNA-dependent RNA polymerase catalyzes the transcription of DNA into RNA using the four ribonucleoside triphosphates as substrates. Second largest core component of RNA polymerase III which synthesizes small RNAs, such as 5S rRNA and tRNAs. Proposed to contribute to the polymerase catalytic activity and forms the polymerase active center together with the largest subunit. Pol III is composed of mobile elements and RPC2 is part of the core element with the central large cleft and probably a clamp element that moves to open and close the cleft. Plays a key role in sensing and limiting infection by intracellular bacteria and DNA viruses. Acts as nuclear and cytosolic DNA sensor involved in innate immune response. Can sense non-self dsDNA that serves as template for transcription into dsRNA. The non-self RNA polymerase III transcripts induce type I interferon and NF- Kappa-B through the RIG-I pathway (By similarity).[UniProtKB/Swiss-Prot Function]