

Product datasheet for **MG211679**

Rfc1 (NM_011258) Mouse Tagged ORF Clone

Product data:

Product Type:	Expression Plasmids
Product Name:	Rfc1 (NM_011258) Mouse Tagged ORF Clone
Tag:	TurboGFP
Symbol:	Rfc1
Synonyms:	140kDa; Alp145; Recc1; RFC140
Mammalian Cell Selection:	Neomycin
Vector:	pCMV6-AC-GFP (PS100010)
E. coli Selection:	Ampicillin (100 ug/mL)
ORF Nucleotide Sequence:	>MG211679 representing NM_011258 Red=Cloning site Blue=ORF Green=Tags(s)

TTTTGTAATACGACTCACTATAGGGCGGCCGGAATTCGTCGACTGGATCCGGTACCGAGGAGATCTGCC
GCC**CGATCGCC**

ATGGACATTCGGAAATCTTTGGGGTTATCAAGTGGAAGAAAGCCTGTAACGAGACAGTAAAGAATG
AGAAGACAAAAGCTTCGGAGGGAAGTGTCAAAGGAAAAAGGGAGTCAAGGAGCCAAAGTCAATAACTC
CGGTAAGAGGACGCCTCCAACCAAAGCAGCACAGCAAGAAGAAGAGGATCATCAATGACTCAGACTCA
GAGTCAGAGGAGACAGTACAGGTAAAAATGCTAAAAAGAAATCAGAAAAATTGCTACTGTCTTATAAAC
CTGGTAAAGTCTCTCAGAAGGATCCTGTACCTACGTCTCTGAGACAGATGAAGATGATGACTTTGTATG
TAAAAAGGCAGCCTCCAATCAAAGAGAATGGAGTATCTACAAATAGTTACCTTGAACATCAAACGTG
AAAAAAATGAAGAAAACGTTAAGACTAAGAACAGCCGTTATCTCCAATAAAACTCACACCAACGTCAG
TGCTCGACTATTTTGAAGTGAAGTGTCCAGAGATCTGGGAAGAAGATGGTGACAAGCAAAAGGAAAGA
ATCTTCTCAAACACAGAGGATTCAGATTAATGATGAGGCCATCGCCAAGCAGCTGCAGCTGGATGAA
GATGCAGAGCTGGAGAGGCAGTTGCATGAAGATGAAGAATTTGCAAGAACACTGGCCTTATTGGATGAAG
AACCAAGATCAAAGGCCCCGAAAGGATTCTGAAGAGGGAGAAGAATCATTTTCATCTGTCCAAGATGA
TTTAAGCAAAGCAGAAAAGCAGAAAAGCCCTAATAAGCCGAGCTTTTCTCAACTGCAAGAAAGACCTAC
AGTCTGCTAAGCATGGCAAGGGGAGGGCTTCAAGAGATGCTAAGCAGCCTTGCAAAATCAGCTCACCGGA
AGGAAGCCTGTTCTCACCCAAGGCCAGTGCCAAACTGGCCTTATGAAAGCAAAAAGAAGAAAGTTCTTA
CAACGAAACAGAGCTGCTGGCTGCAAGAAGAAAAGAAAGCGCCTGAACCCAAAGGAGAGAAAAACAACT
CCTAAGAAAACGAAAGTTTCTCCAATAAGAGAGAGTCTGTAAGCCCAGAAGACTCTGAAAAAGAGCGCA
CTAATTATCAAGCTTATCGAAGCTACTTGAACCGAGAAGGTCCCAAAGCTCTGGGCTCCAAGAAAATACC
CAAGGGAGCTGAAAATTGCTTGAAGGCCTGACGTTTGTGATCACAGGAGTGCTGGAGTCCATTGAACGA
GACGAAGCCAAGTCTCTAATTGAACGTTATGGGGGAAAAGTAACAGGAAACGTGAGCAAGAAAACCAACT
ACCTCGTCATGGGCCGACAGTGGCAGTCCAAGAGTGACAAGGCAGCAGCTCTGGGAACAAAAATCCT
CGATGAAGACGGCCTGTTGGATCTGATTGAACTATGCCAGGCAAGAGATCCAAGTATGAGATGGCTGCT



[View online »](#)

GAGGCTGAGATGAAGAAAAGAAAAGTCCAAATTGGAGCGAACACCCCAAAAAAATGATCAAGGAAAAAGAA
 AAATTAGTCCAGCCAAGAAGGAGTCAAGTCTAAAAAGTCAAGCTGACTCTCCTAAAGAACAGTCTAT
 GAAGGCAGTGAAGAAGGAGGCAAGCACGTGCCAAGGGGCTGGATGTCAAGGAGACACATGGCAACCGC
 AGTAGCAACAAAGAGGAATGTCTGCTCTGGGTGGATAAGTACAAGCCCGCTCACTCAAGAACATAATCG
 GACAGCAGGGTGACCAGAGCTGTGCCAACAAATTAACGTTGGCTCAGAACTGGCACAAGAGTTCTCC
 TGAAGAGAAAAACATGCAGCAAAGTTGGCAAACCTGCCAGCAAAGATGATGGCTCCAGTTTCAAGGCA
 GCTCTGTGTCTGGCCCTCCAGGTGTTGGCAAACCACTACAGCTTCTCTGTGTGTCAGGATTTGGCT
 ACAGTTATGTGGAATAAATGCAAGTGATACTCGGAGTAAGAACAGTTTGAAGCAGTTGTTGCTGAATC
 CTTGAACAACACCAGCATCAAAGCTTTTATACAAGTGGAGCGGCTCCTTCCGTGAGTGCAGGACGCGC
 CTCATCATGGATGAGGTGATGGCATGGCAGGCAATGAAGACAGGGGTGGAATTCAGGAGCTAATAGGCC
 TGATAAGCATACTAAAATCCCATCATTTGTATGTGCAATGATAGAAACCACCCCAAAATTCGCTCATT
 GGTTTATTATTGTTTGTCTTCGTTTCCAAAGACCTCGAGTTGAACAGATTAAGAGTCAATGCTGTCT
 ATTGCAATTAAGAGGGTTTAAAAATCCCCCTCCAGCTATGAATGAAATAATTTGGGAGCTAATCAAG
 ATGTCAGACAGGTTTACACAATCTCAGTATGTGGTGTGCACAAAGTAAGGCCCTGACCTATGACCAAGC
 CAAGGCTGATTCTCAGAGGGCTAAGAAGGATATCAGACTGGGCCATTTGATGCTACTCGGAAAGTGT
 GCAGCTGGAGAGGAGACTGCACACATGTACTGATGGACAAGTCAGATCTTCTTCCATGACTATTCCA
 TAGCACCCCTCTTTGTCCAGGAGAACTACCTGCATGTAAGCCTGTGGCTGCAGGAGGTGACATGAAAA
 GCATTGATGCTTTAAGCCGGGACGAGATAGCATATGTGACGGTACTTAGTGGACAATCAGATCCGG
 AGTAAGCAAACTGGAGTCTTCTGCCACCCAGGCCATCTATGCCAGTGTCTTCTGGAGAGTTGATGC
 GGGGCTACATGACTCAGTTTCCGAGCTTCCGAGCTGGCTGGGGAAGCACTCGTCTACGGGCAACATGA
 TCGGATTGTTTCCAGACCTATCCTTGACATGAGTCTTGAAGTACTCCAGCAAAAGGACAGTGAACATG
 GATTACCTGTACACATCAGAGACGCACTTGTACGACCTTGCCTCACAAGGGGTAGAAGGGGCTCAGC
 ATGTCTCAAACCTATGGACACATACTATCTGATGAAAGAAGATTTTGAAGACATCATGGAAGTTAGCAG
 CTGGGGGGCAAGCCAGTGCCTTTTCCAAGCTGGATCCCAAGGTGAAAGCGGCCTTCAAGAGCCCTAC
 AATAAGGAGGCCACCTGACCCATACTCACTTCAAGTAGTAAAGACATCGAGGCTCAGCACGGGTCAG
 CACTGGATTCTGAGTACAGTGAAGGATCCAGGAAGATGACACTCAGTCTGAGAAAGAGCAGGATGCAGT
 GGAGACTGACCCATGATCAAGAAAAAGACAAGATCTTCAAACCTTCAAAGTCAGAAAGAGAGAAGGAG
 TCCAAAAAGGAAAAGGAAAAGAAATTGGAAGAAA

ACGCGTACGCGGCCGCTCGAG - GFP Tag - GTTTAA

Protein Sequence:

>MG211679 representing NM_011258
 Red=Cloning site Green=Tags(s)

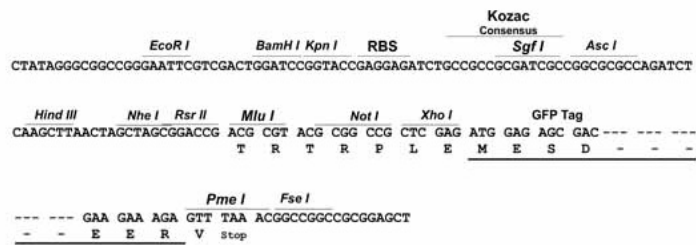
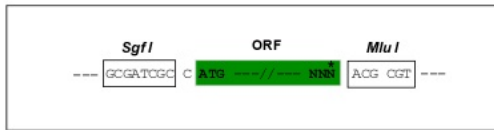
MDIRKFFGVISSGKPKVNETVKNEKTKASEGTVKGGKGVKEAKVNNSGKEDASKPKQHSKKRIINDSDS
 ESEETVQVKNNAKKSEKLSL SYKPGKVSQKDPVTYVSETDEDDDFVCKKAASKSKENGVSNSYLGTSNV
 KKNEENVKTKNKPLSPIKLTPTSVLDFGTESVQRSGKMMVTSKRKESQNTEDSRLNDEAIAKQLQLE
 DAELERQLHEDEEFARTLALLDEEPKIKKARKDSEEGEESFSSVQDDL SKAEKQKSPNKAE L F STARKTY
 SPAKHGKGRASEDAKQPCSAHRKEACSSPKASAKLALMKAKEESSYNETELLAARRKESATEPKGEKTT
 PKKTKVSPTKRESVSPEDSEKRTNYQAYRSYLNREGPKALGSKEIPKGAENCLEGLTFVITGVLESIER
 DEAKSLIERYGGKVTGNVSKKTNLVMGRDSGQSKSDKAAALGKILDEDGLLDLIRTMPGKRKYEMAA
 EAEMKKEKSKLERTPQKNDQGRKISPAPKSESESKKCKL TLLKNSPMKAVKKEASTCPRGLDVKETHGNR
 SSNKEECLLWVDKYKPAASLKNIIIGQQGDQSCANKLLRWRNWHKSSPEEKHAAKFGKLASKDDGSSFKA
 ALLSGPPGVGKTTTASLVCQELGYSYVELNASDTRSKNSLKAVVAESLNNTS IKGFTSGAAPSVSARHA
 LIMDEVDMAGNEDRGGIQELIGLIKHTKIPIICMCDNRNHPKIRSLVHYCFDLRFQRPRVEQIKSAML S
 IAFKEGLKIPPPAMNEIILGANQDVRQVLHNL SMWCAQSKALTYDQAKADSQRAKKDIRLGPFDVTRKVF
 AAGEETAHMSLMDKSDLFFHDYSIAPLFFQENYLHVKPVAAAGDMKKHMLLSRAADSICDGLVDNQIR
 SKQNWSLLPTQAIYASVLPGELMRGYMTQFSPFSPWLKHSSTGKHDRIVQDLSLHMSLRTYSSKRTVNM
 DYLSHIRDALVRPLTSQGVGAQHVIKLMDTYYLKMEDFENIMEVSSWGGKPSAFSKLDPKVKAAFTRAY
 NKEAHLTPYSLQVVKTSRLSTGPALDSEYSEEFQEDDTQSEKEQDAVETDAMIKKKTRSSKPSKSEREKE
 SKKGGKGNWKK

TRTRPLE - GFP Tag - V

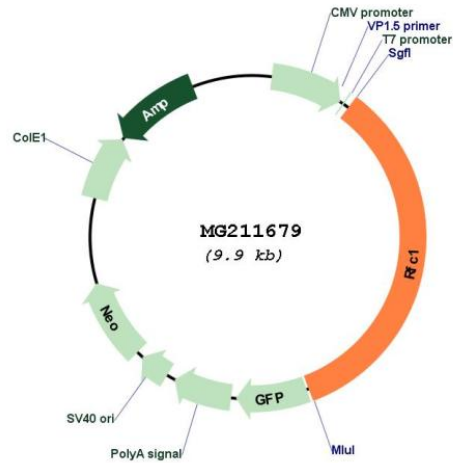
Restriction Sites: SgfI-MluI

Cloning Scheme:

Cloning sites used for ORF Shutting:



Plasmid Map:



ACCN: NM_011258

ORF Size: 3393 bp

OTI Disclaimer: The molecular sequence of this clone aligns with the gene accession number as a point of reference only. However, individual transcript sequences of the same gene can differ through naturally occurring variations (e.g. polymorphisms), each with its own valid existence. This clone is substantially in agreement with the reference, but a complete review of all prevailing variants is recommended prior to use. [More info](#)

OTI Annotation: This clone was engineered to express the complete ORF with an expression tag. Expression varies depending on the nature of the gene.

Components: The ORF clone is ion-exchange column purified and shipped in a 2D barcoded Matrix tube containing 10ug of transfection-ready, dried plasmid DNA (reconstitute with 100 ul of water).

Reconstitution Method:

1. Centrifuge at 5,000xg for 5min.
2. Carefully open the tube and add 100ul of sterile water to dissolve the DNA.
3. Close the tube and incubate for 10 minutes at room temperature.
4. Briefly vortex the tube and then do a quick spin (less than 5000xg) to concentrate the liquid at the bottom.
5. Store the suspended plasmid at -20°C. The DNA is stable for at least one year from date of shipping when stored at -20°C.

RefSeq: [NM_011258.2](#), [NP_035388.2](#)

RefSeq Size: 4731 bp

RefSeq ORF: 3396 bp

Locus ID: 19687

UniProt ID: [P35601](#)

Cytogenetics: 5 33.61 cM

Gene Summary:

The elongation of primed DNA templates by DNA polymerase delta and epsilon requires the action of the accessory proteins PCNA and activator 1. This subunit binds to the primer-template junction.[UniProtKB/Swiss-Prot Function]