

Product datasheet for **MG211678**

Btbd7 (NM_172806) Mouse Tagged ORF Clone

Product data:

Product Type:	Expression Plasmids
Product Name:	Btbd7 (NM_172806) Mouse Tagged ORF Clone
Tag:	TurboGFP
Symbol:	Btbd7
Synonyms:	5730507E09Rik; 8030448M07; E130118E17Rik; FUP1; mKIAA1525
Mammalian Cell Selection:	Neomycin
Vector:	pCMV6-AC-GFP (PS100010)
E. coli Selection:	Ampicillin (100 ug/mL)
ORF Nucleotide Sequence:	>MG211678 representing NM_172806 Red=Cloning site Blue=ORF Green=Tags(s)

TTTTGTAATACGACTCACTATAGGGCGGCCGGAATTCGTCGACTGGATCCGGTACCGAGGAGATCTGCC
GCC**CGATCGCC**

ATGGGTGCTAATGCATCTAACTATCCTCATTCATGTTCCCAAGGGTAGGGGAAATTCACAGGCCAGC
AGACTTTCATAGGAACATCTTCTATTCTCAACAAGGCTATGGTTGTGAGTCAAAGTTGTATAGCCTTGA
CCATGGCCATGAGAAACCACAAGACAAAAAAGAGAACCTCTGGCCTTGCCACTCTCAAAAAGAAGTTT
ATTAACGCCGAAAATCTAATAGATCGGCTGATCAGCCAAGCAGATGCGAGAATCCTCTCTGGGTGGG
ATGTTAGAGATGTCAATGCACTAGTGAAGAATATGAGGGAATTCAGCCTTGAAGGAGCTTCTCTGCA
AGCCAGTTTGGCTAGGCCAGAAGCTCGGACCCTGCAGAAGGACATGGCCGACCTTTATGAGGATAAGTAC
TGTAAGTACTGACGTGGACTTAATATTTTCAGGAACTTGTTTTCTGTTTCCACCTGCCATTTTGGCAGCAAGGT
GTCCATTTTTTAAACCCCTGCTTCTTCTTCCACCTGAGTATGGGGCAGAGATAATAATGGACATCAGTAC
AGCTGGTATTGATATGCCATGTTTTCCGCCTGTTTACACTACCTTTATACAGGAGAGTTTGAATGGAG
GACTCAAGATTTGAGAAATGTCGACATCCTTGTTCAGCTTAGTGAAGAATTTGGAACCAAAATCCCTTG
ATGTAGATATGCGTGGACTCTTTGATTACATGTGTTATTATGATGTTGTCCTTAGTTTTCTTCAGATTC
TGAAGTACTAGTTGAAGCTTTTGGTGGAAATCAGAAGTATTTAGATGAAGAGCTCAAAGCCACAAGGCTATT
ATTTCTGCACGGTCCCGTTTTTCCGAAATTTATTACAAAGGAGAATACGGACTGGTGAAGAAATCACAG
ACCGAAGTTTGAAGAACTCCCAAGAATTATATTAGATGAGTCCATTATACCAAAAAAATATGCAAAAGT
GATATTACACTGTATGTATACCGATGTGGTGGACCTCTGTTTTACTGTAGCCCTCTGTGGGGAGT
CTCAGTGAAGTTCAGGCTCTCGTCGAGGGAAGCCAAACATGACCAGGGCAGAAGAAGCCATGGAATTT
ACCACATAGCACTATTCTTGAATTTAACATGCTTGCAAGGCTGTGAGGACATCATTGCTGAGAGCAT
CTCATTAGACACCTTAATTGCCCTCTCAAGTGGAGCTCGCATCCATACGGCTCTAAGTGGGTGCACCGA
CAAGCTGTGCATTTCTGTGTGAGGAGCTATCCAGGTGATGACTTCGGATGTTTTTATGAACTGAGCA
AAGACCATCTGCTTACTGCTATCCAGTCTGACTACCTACAGGCAAGCGAACAAGATATCCTTAAATATCT
GATTAATGGGGTGGAGCATCAGTTGATGAAAAGAATAGCAGACAGAGAGCCAAACTACTGAGTGGCACT



[View online »](#)

```
GCACATAGTGTGAACAAAAGAGGTGTGAAGAGAAGAGACCTGGACATAGAAGAACTTAGAGAGATCCTTT
CTTCTCTCTTGCCTTTTGTGCGGATTGAACACATCCTACCTATAAACAGTGAGGTCTTAAGTGATGCAAT
GAAAAGAGGCTTGATCAGCACGCCGCCATCAGACATGCTTCTACAGCAGAGGGCGGAAATCAAACGCC
TGGCTGCGGCAGAAGAACGCTGGCATATATGTTCTGCTCGGCTGTTTTCTCCCTATGTGGAGGAAGCAA
AGTCAGTGCTGGATGAGATGATGGTGAACAGACAGACCTGGTGCAGCTGCGAATGGTGCCGATGTCCAA
TGTCCCAGACACACTCTACATGGTCAGCAATGCCATGCCCCAGTGCTGCCACATGATCAGCCACCAGCAG
ATCAGCAGTAACCAGTCGAGCCCTCCATCAGTTGTAGCCAAATGAGATCCCAGTTCCTCTCCCTCATTAA
TGAAGGATATGGTGAGGGCCTGCAGGAACTGCGGCACACAGAGCAGGTGCAGAGAGCCTATGCACTGAA
CTGTGGGAAGGTGCCACCGTCAGCTATGAAATCCAGATCCGAGTGCTCAGAGAGTTTGGTCTTGACAGAC
GCCGCTGCAGAGCTCCTACAGAATCCTCACAAGTTCTTTCTGATGAACGGTTTGGGGATGAAAGTCCGC
TCTTGACAATGAGGCAGCCTGGGAGATGTCGTGTCAACAGTACCCTACTGCAGAAACCTGTTTACAGA
CCTGGACTCTTTTGTGGCCTTCCATCCACCTTTACCCCTCCGCCCTCCGTACCACCTCCAGCTACT
CCAATCCATAACCAGCTCAAGGCAGGCTGGAAGCAAAGGCCTCCAGTACCACCTTCCGTTCAATTT
CTTACCCTGTAATCATTCACTGTTTCACTGCAGAACAGCTCCTAAACCTGGCCCTCCCCAGTCTATTT
GCCAGGTGTTAAAGTAGCCCTCCGACTGCACCAACACCACAGGCTGGGGAGACAGACGGTTGCTGCT
GCTGCTGCAGCTGCTGCCGCTCAGCAGCAATAACCTGAGAAGCAAGTGTGTCCACAGCTGTGCTGA
ATGACCTGATGCCAGATATCGCCATGGGGTGTCTACACTGTCACTCAAGGACAGGAGGCTCCCAGAGCT
CGCTGCAGACACAGAGTTATGCCAGACAGTTTCTGAAGCAGGAACGGGACCTCCCAGCATCTGTGATGT
ATTCCACAGAGACACAAAACACATCTCGAAAAAACCCACACTAGAGCAGAAAGCAGACGGTAGAGAAA
ATCAGCAGGAATACCCAGATCTCTATGACTTCTCAAATGCTGCTGCAGACCTTCCACTCCTGCTCCTGG
CAGACACTCCCCTTCCCCTGCTCATGGTAGATACTTTGGTCCAGACTTGTACAGCCACAATAAGGCATCA
CCAAATGGCTTAAAGTCAGTTTACCTACCTGGTCAGACCTCTCTAAAAAGCAGGAAGCCCTAGGAGAG
AGTATCCACGCTCTCTGACGGCCATCCGCACAGGCAGAAAGAGGGAGCCGATACGTTGACGCTGTTGA
GCAGCCTCCCCAGAGGCCAGACTTCTTCCCGCAGCCTCAGAAAAATGCTAGTCAATGGTCCAGCCCATGTC
AGGGCACGGACTGCAGTAGAAACTGACTTGACTTTTGGGCTGACATCTAACAGACCTCCTTCCCATTCTG
CGTGTAGCTCTGAAGTTCTCGAAGAGCGATCCAGTAGACGACTGACAGACAGCGAGCCCTGGGCCATGG
AGCTCATCAAAGAAATGCAGATCTGAAAGGGGTATTCCATTAGCAGAGGACGGAGGTCGCCAAGCAAG
CCAGACTTCTCTACAAAAGTCTGCCCTC
```

ACGCGTACGCGGCCGCTCGAG - GFP Tag - GTTTAA

Protein Sequence:

>MG211678 representing NM_172806
 Red=Cloning site Green=Tags(s)

```
MGANASNYPHSCSPRVGGNSQAQQTFIGTSSYSQQGYGCESKLYSLDHGHEKPQDKKRTSGLATLKKKF
IKRRKSNRSADHAKQMRELLSGWDVRDVNALVEEYEGTSALKELSLQASLARPEARTLQKDMADLYEDKY
CTDVDLIFQETCFPVHRAILAARCPFFKTLSSSPEYGAEIIMDI STAGIDMPMF SALLHYLYTGEFGME
DSRFQNV DILVQLSEEFGTPNPLDVMRGLFDYMCYYDVVLSFSSDSELVEAFGGNQCLDEELKAHKAI
ISARSPFFRNLLQRRIRTGEEITDRTLRTPTRIILDESIIPKKYAKVILHMYTDVVDLSVLHCSPSVGS
LSEVQALVAGKPNMTRAEEMELYHIALFLEFNMLAQGCEDI IAESI SLDTLIAVLKWSHPYGSKWVHR
QAVHFLCEELSQVMTSDVFYELSKDHLLTAIQSDYLQASEQDILKYL IKWGEHQLMKRIADREP NLLSGT
AHSVNKRGVKRRDLIEELREILSSLLPFVRIEHL PINSEVLS DAMKRGLISTPPSDMLPTAEGGKSNA
WLRQKNAGIYVRPRLFSPYVEEAKSVLDEMMEVQTDL VRLRMVRMSNVPDTL YMVSNAMPQCCHMISHQQ
ISSNQSSPPSVVANEIPVPRLLIMKDMVRRLQELRHTEQVQRAYALNCGEGATVSYEIQIRVREFGLAD
AAEELLQNP HKFFPDERFGDESPLL TMRQPGRCRVNSTPTAETMFTDLSFVAFHPPLPPPPPPYHPPAT
PIHNLKAGWKQRPPSHHPSRSFSYPCNHSLFHCRTAPKPGPPPVYLPGVKVAPPDCTNTTGLGRQTVA
AAAAAASAAI IPEKQVCPQV LNDLMPDIAMGVSTLSLKD RRLPELAADTEL CQTVSEAGTGPPQHLSC
IPQRHTNTSRKKPTLEQKADGRENQQEYDLYDF SNAACRPSTPAPGRHSPSPA HGRYFGPDLYSHNKAS
PNGLKSVYLPQGTSPKKQEDPRREYPPSPDGHPHRQKREPIRLDVVEQPPQRPDFPSAASENASHGPAHV
RARTAVETDLTFGLTSNRPPSHSACSSEVLEERSRRLTDSEPLGHGAHQRNADLERGDSISRGRRSPSK
PDFLYKKSAL
```

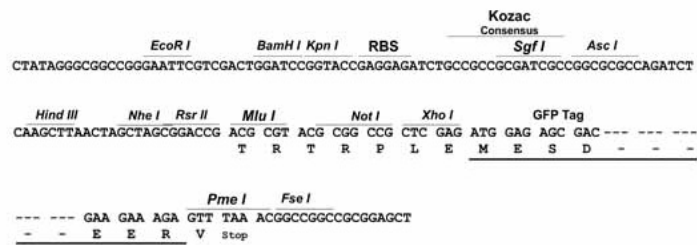
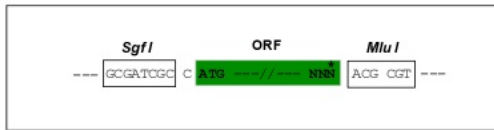
TRTRPLE - GFP Tag - V

Restriction Sites:

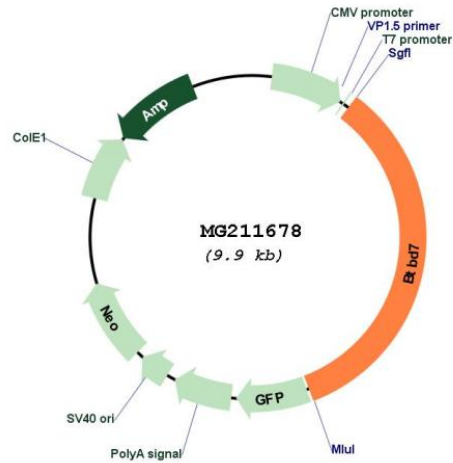
SgfI-MluI

Cloning Scheme:

Cloning sites used for ORF Shutting:



Plasmid Map:



ACCN: NM_172806

ORF Size: 3390 bp

OTI Disclaimer: The molecular sequence of this clone aligns with the gene accession number as a point of reference only. However, individual transcript sequences of the same gene can differ through naturally occurring variations (e.g. polymorphisms), each with its own valid existence. This clone is substantially in agreement with the reference, but a complete review of all prevailing variants is recommended prior to use. [More info](#)

OTI Annotation: This clone was engineered to express the complete ORF with an expression tag. Expression varies depending on the nature of the gene.

Components: The ORF clone is ion-exchange column purified and shipped in a 2D barcoded Matrix tube containing 10ug of transfection-ready, dried plasmid DNA (reconstitute with 100 ul of water).

Reconstitution Method:

1. Centrifuge at 5,000xg for 5min.
2. Carefully open the tube and add 100ul of sterile water to dissolve the DNA.
3. Close the tube and incubate for 10 minutes at room temperature.
4. Briefly vortex the tube and then do a quick spin (less than 5000xg) to concentrate the liquid at the bottom.
5. Store the suspended plasmid at -20°C. The DNA is stable for at least one year from date of shipping when stored at -20°C.

RefSeq: [NM_172806.3](#)

RefSeq Size: 4325 bp

RefSeq ORF: 3393 bp

Locus ID: 238386

UniProt ID: [Q8CFE5](#)

Cytogenetics: 12 E

Gene Summary:

Acts as a mediator of epithelial dynamics and organ branching by promoting cleft progression. Induced following accumulation of fibronectin in forming clefts, leading to local expression of the cell-scattering SNAIL2 and suppression of E-cadherin levels, thereby altering cell morphology and reducing cell-cell adhesion. This stimulates cell separation at the base of forming clefts by local, dynamic intercellular gap formation and promotes cleft progression. [UniProtKB/Swiss-Prot Function]