

Product datasheet for **MG211675**

Ascc3 (BC059917) Mouse Tagged ORF Clone

Product data:

Product Type:	Expression Plasmids
Product Name:	Ascc3 (BC059917) Mouse Tagged ORF Clone
Tag:	TurboGFP
Symbol:	Ascc3
Synonyms:	RNAH, ASC1p200, D630041L21
Mammalian Cell Selection:	Neomycin
Vector:	pCMV6-AC-GFP (PS100010)
E. coli Selection:	Ampicillin (100 ug/mL)
ORF Nucleotide Sequence:	>MG211675 representing BC059917 Red=Cloning site Blue=ORF Green=Tags(s)

TTTTGTAATACGACTCACTATAGGGCGGCCGGAATTCGTCGACTGGATCCGGTACCGAGGAGATCTGCC
GCC**CGATCGCC**

ATGGACAGTTTCTCCCTCATATCAGATTCTGCATATGTCGCCAGAAATGCAGCTAGAATTGTCGGTGCTC
TCTTTGAAATTGCACTGAGGAAACGTTGGCCTACCATGACCTACAGGCTTTTGAATCTTAGTAAAGTCAT
TGACAAGAGACTCTGGGTTGGGCTAGCCCTTTGAGACAATTTCTGTGTACCACCACACATTCTAACA
AGATTAGAAGAAAAACCTTACTGTGGATAAACTCAAAGACATGAGAAAAGATGAAATAGGTCACATTT
TGCATCATGTGAATATTGGACTGAAGGTCAAACAGTGTGTTCATCAAATTCCTTCTGTTACAATGGAAGC
TTCCATTCAGCCCATCACACGGACTGTCTCCGAGTATCACTGAACATCCACCCTGATTTCTCTGGAAAT
GACCAGTTTCATGGAACAGTGGGGGAACCATGGTGGATTTGGGTAGAAGATCCTACAAATGACCATATTT
ATCACTCGGAGTACTTTCTAGCTCTTAAAAACAGGTTATTAATAAGGAAGCTCAACTTCTGGTATTTAC
AATTCCTATTTTTGAGCCTTTGCCCTCTCAGTACTACATTCGAGCAGTGTCTGATCGATGGCTAGGAGCT
GAAGCTGTTTGCATTATCAACTTCAACATCTGATTCTACCAGAGAGACATCCTCCCATACAGAATTAT
TGGACCTCAACCTTTACCAATTACAGCTTTGGGGTCAAAGCATATGAAGCTCTATAAATTCAGCCA
CTTTAACCCGTGTACAGACGCAGATATCCACACACTGTATCACACAGACTGTAATGTTCTGCTTGGCGCC
CCCACCGGATCAGGAAAGACAGTTGCAGCTGAAGTATGCAAGTATTTCAACAAATATCCTACTT
CAAAGGCAGTATATATTGCACCCCTCAAAGCTCTAGTACGTGAAAGAATGGATGATTGGAAAATTAGGAT
AGAAGAAAAAATTGGTAAAAAAGTTATTGAACTAACTGGGGATGTGACTCCAGACATGAAATCCATTGCT
AAGGCTGACCTTATTGTCACCACACCAGAAAAGTGGGATGGAGTTAGTCGAAGCTGGCAGAATAGAAGCT
ATGTTTCAGCAGGTCAACATTTCTCATCATAGATGAGATCCATCTGCTAGGGGAGGAGAGGCCAGTTTTT
AGAAGTCATTGTATCTCGAACAACTTTATCTCATCACACACAGAAAAACCAGTTAGAATAGTTGGACTG
TCCACTGCATTAGCTAATGCTAGAGATCTTGCTGACTGGCTCAACATTAAGCAGATGGGTTTGTTTAACT
TCCGACCATCAGTTCGCCAGTTCCTGGAAGTTCACATTCAGGGTTTCCAGGACAACATTACTGCC
ACGCATGGCTAGTATGAACAAGCCTGCATTTAGGCAATTAGAAGTCACTCTCCAGCCAAGCCTGTTTTT



[View online »](#)

ATATTTGTCTCATCAAGACGCTCAAACACGACTTACAGCCTTAGAGTTGATAGCATTCTGGCCACTGAAG
 AAGACCCAAAGCAGTGGTTGAATATGGATGAGCAAGAGATGGACAACATCATTGGAACAGTACGAGATTC
 CAACCTCAAGCTGACTCTAGCTTTTGGAAATAGGAATGCATCATGCTGGCCTGCATGAAAGAGACCGAAAA
 ACTGTAGAAGAGCTGTTTGTGAAGTGTAAAGTTTTCAGGTTCTCATTGCTACAAGCACATTAGCATGGGGTG
 TAAACTTTCCAGCACACTTAGTAATTATTAAGGGAAGTGAATATTATGATGGAAGACAAGACGTTATGT
 GGATTTTCCCATCACAGATGTGCTGCAGATGATGGGACGAGCTGGGAGACCTCAGTTTGTGACCCAGGGC
 AAAGCTGAATTCTAGTTTCATGATATAAAAAAGATTTTTATAAAAAAGTTCTTTTGAACCTTTCCCAG
 TAGAATCAAGCTTATTAGGAGTGTGTCTGACCACTTAAATGCAGAGATTGCTGGAGGTACAATAACATC
 AAAGCAAGATGCAATGGATTATATCACCTGGACTTACTTTTTCCGGCGTCTTATCATGAATCCCAGCTAC
 TACAGCTTGGGTGACGTGAGCCAGGACTCCATAAAACAAGTTCTGTGACATCTGATTGGGACGTCTCTGG
 TTGAATTGGAGCTTTCCCACTGCATTGAAGTTGGAGAGGATAATCGCACCATTGAACCACTGACATGTGG
 TCTAATTGCCCTCTATTACTATTTGAAGCACAAAAGTGTCAAAATGTTCAAGGACCGTTTGAACCTGAG
 TGCAGCACTGAGGAAGTGTGCAATTCTGAGTGTGAGGAGAAATACACAGACTTACCAGTAAGACACA
 ATGAGGACCATACGAATAATGAATTGGCCAAATGCTTCCCATTGAATTAATCCTCATTCTTTGACAG
 CCCTCACACCAAAGCCCATCTCTTGTCTCAAGCGCATCTCAGCCGAGCCATGCTGCCCTGCCAGATTAT
 GATACTGATACCAAACAGTCTTAGACCAAGCTCTCAGAGTATGCCAGGCAATGCTGGATGTGGCTGCAA
 GCCAGGGATGGCTAGTGACCGTCTGAATATCACCCACCTGATTCAGATGGTGATCCAAGGCCGATGGCT
 CAAGGACTCTTCTCTTCTCAATAACCAAACATAGAGCAGCACCACCTTACCTTTTTCAGGAAATGGAAG
 CCACCTGTAAAGAGCTCACATGCTAAGTCCGAACATCCATTGAGTGCCTTCTGAGCTGATCCATGCCCT
 GTGAAGGGAAGGACCATGTGTTCCAGTCCATGGTAGAGAAAGAGTTACAGCCTGCAAAAACAAAGCAGGC
 ATGGAATTTCTTATCTCGCTTCCAGTGATAAATGTTGGCATAAGTGTAAAGGCTCATGGGATGACTTA
 GTTGAAGGACATAATGAAGTCTCCATCTCAACTGACAGCAGACAAACGGGATGAAAACAAATGGATCA
 AGTTGCATGCTGATCAGGAGTATGTGCTCAAGTCAAGCTACAGAGAGTCCATTTTGGGCTTCCAAGGG
 AAAACATGAGAATCACGCAGTTACTCCTCGATTTCCAAAATTAAGAGATGAAGGCTGGTTTTTGGATTA
 GGAGAAGTGGATAAGAGAGAGCTGATGGCTGTAACACAGTAGGATTTGTTTGAACACATCATGATGCTT
 CCATCTCGTTCTTACTCCTGAAACACCTGGAAGATATATCTTTACCCTGTATCTCATGAGTACTGTTA
 CCTCGGCTAGACCAGCAGTATGACATTTATCTCAATGCATAAAAGCAAACATTTCTACAAAGGACTCT
 GATGTCTTCACTGACTTGTGAGTA

ACGCGTACGCGGCCGCTCGAG – GFP Tag – GTTTAA

Protein Sequence:

>MG211675 representing BC059917
 Red=Cloning site Green=Tags(s)

MDSFSLISDSAYVAQNAARIVRALFEIALRKRWPTMTYRLLNLKVIDKRLWGWASPLRQFSVLPHPHILT
 RLEEKNLTVDKLKDMRDEIGHILHHVNIIGLVKQCVHQIPSVTMEASIQPIRTRVLRVSLNIHPDFSWN
 DQVHGTVGEPWWIIVWEDPTNDHIYHSEYFLALKKQVINKEAQLLVFTIPIFEPLPSQYYIRAVSDRWLGA
 EAVCIINFQHLILPERHPPHTELLDLQPLPITALGCKAYEALYNFSHFNPVQTQIFHTLYHTDCNVLLGA
 PTGSGKTVAEELAIIFRVFNKYPTSKAVYIAPLKALVRERMDWKIRIEEKLGGKVIELTGDVTPDMKSIA
 KADLIVTTPKEKWDGVSRSWQNRSYVQVNIIDEIHLGGERGPVLEIVSRTNFISSHTEKPVRIVGL
 STALANARDLADWLNLIKQMLFNFRPSVRPVPLEVHIQGFPGQHYCPMASMNKPAFQAIRSHSPAKPVL
 IFVSSRRQTRLALELIAFLATEEDPKQWLNMQEMDNIIGTVRDSNLKTLAFGIGMHAGLHERDRK
 TVEELFVNCKVQVLIATSTLAWGNFPAHLVVIKGTVEYDGGKTRRYVDFPIDVLMQMMGRAGRPQFDDQG
 KAVILVHDIKKDFYKKFLYEPFVVESSLLGVLSDHLNAEIAAGTITSKQDAMDYITWYFFRRLIMNPSY
 YSLGDVSQDSINKFLSHLIGQSLVELELSHCIEVGEDNRTIEPLTCGLIASYYYYLKHKTVMFKDRLKPE
 CSTEELLSILSDAEEYTDLPVRHNEHTNNELAKCLPIELNPHSFDSPHTKAHLLLQAHLSRAMLPCPDY
 DTDTKTVLDQALRVCQAML DVAASQGWLVTVLNI THLIQMV IQGRWLKDSLLTIPNIEQHHLHLFRKWK
 PPVKSSHAKCRTSIECLPELIHACEGKDHVSSMVEKELQPAKTKQAWNFLSRLPVINVGISVKGSWDDL
 VEGHNELSISTLTADKRDENKWKLHADQEYVLQVSLQRVHFGLPKGKHENHAVTPRFPKLDKDEGWFLLI
 GEVDKRELMVAVKRVGFVRTHHDASISFFTPETPGRYIFTLYLMSDCYLGLDQQYDIYLNVIKANISTKDS
 DVFTDLSV

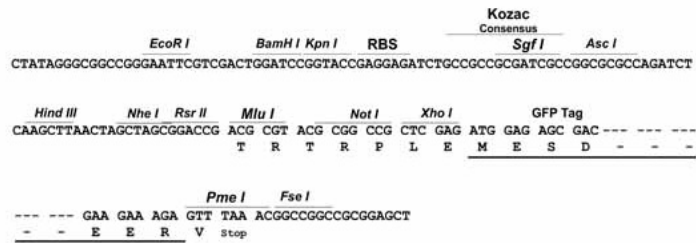
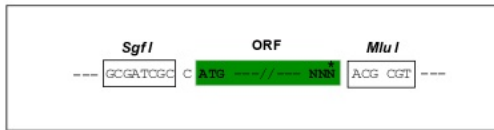
TRTRPLE – GFP Tag – V

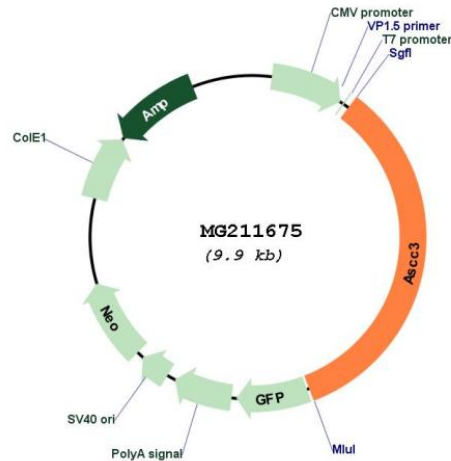
Restriction Sites:

SgfI-MluI

Cloning Scheme:

Cloning sites used for ORF Shuttling:



Plasmid Map:


ACCN: BC059917

ORF Size: 3384 bp

OTI Disclaimer: The molecular sequence of this clone aligns with the gene accession number as a point of reference only. However, individual transcript sequences of the same gene can differ through naturally occurring variations (e.g. polymorphisms), each with its own valid existence. This clone is substantially in agreement with the reference, but a complete review of all prevailing variants is recommended prior to use. [More info](#)

OTI Annotation: This clone was engineered to express the complete ORF with an expression tag. Expression varies depending on the nature of the gene.

Components: The ORF clone is ion-exchange column purified and shipped in a 2D barcoded Matrix tube containing 10ug of transfection-ready, dried plasmid DNA (reconstitute with 100 ul of water).

Reconstitution Method:

1. Centrifuge at 5,000xg for 5min.
2. Carefully open the tube and add 100ul of sterile water to dissolve the DNA.
3. Close the tube and incubate for 10 minutes at room temperature.
4. Briefly vortex the tube and then do a quick spin (less than 5000xg) to concentrate the liquid at the bottom.
5. Store the suspended plasmid at -20°C. The DNA is stable for at least one year from date of shipping when stored at -20°C.

RefSeq: [BC059917.1](#)

RefSeq Size: 4162 bp

RefSeq ORF: 3386 bp

Locus ID: 77987

Cytogenetics: 10 B3

Gene Summary:

3'-5' DNA helicase involved in repair of alkylated DNA. Promotes DNA unwinding to generate single-stranded substrate needed for ALKBH3, enabling ALKBH3 to process alkylated N3-methylcytosine (3mC) within double-stranded regions. Part of the ASC-1 complex that enhances NF-kappa-B, SRF and AP1 transactivation.[UniProtKB/Swiss-Prot Function]