

Product datasheet for **MG211669**

Map4 (NM_008633) Mouse Tagged ORF Clone

Product data:

Product Type:	Expression Plasmids
Product Name:	Map4 (NM_008633) Mouse Tagged ORF Clone
Tag:	TurboGFP
Symbol:	Map4
Synonyms:	AA407148; MAP-4; Mtap-4; Mtap4
Mammalian Cell Selection:	Neomycin
Vector:	pCMV6-AC-GFP (PS100010)
E. coli Selection:	Ampicillin (100 ug/mL)
ORF Nucleotide Sequence:	>MG211669 representing NM_008633 Red=Cloning site Blue=ORF Green=Tags(s)

TTTTGTAATACGACTCACTATAGGGCGGCCGGAATTCGTCGACTGGATCCGGTACCGAGGAGATCTGCC
GCC**CGATCGCC**

ATGGCCGACCTCAGTCTTGTGGATGCGTTGACAGAACCACCTCCAGAAATTGAGGGAGAAATAAAGCGAG
ACTTCATGGCTGCGCTGGAGGCAGAGCCCTATGATGACATCGTGGGAGAACTGTGGAGAAAAGTGTGAT
TATTCCTCCTGGATGGTGTGAGAAAACCGGAACTCAGAGTCCAAAAAGAAACCTGCTTAGACACT
AGCCAGGTTGAAGGTATCCCATCTCTAAACCAACTCTAGCCAATGGTGATCATGGAATGGAGGGGA
ATAAAGTGCAGGCTCTCAACTGACTTCTTGAAGAGAGAGTGGACTATCCGGATTATCAGAGCAGCCA
GAACTGGCCAGAAGATGCAAGCTTTTGTTCAGCCTCAGCAAGTGTAGATACTGACCAGGCTGAGCCC
TTTAACGAGCACCGTGATGATGGTTTGGCAGATCTGCTCTTTGTCTCCAGTGGACCCACGAACGCTCTG
CATTTACAGAGCGAGACAATCCTTCAGAAGACAGTTACGGTATGCTTCCCTGTGACTCATTTGCTCCAC
GGCTGTTGATCTCAGGAGTGGTCTGTGGGAGCCCAAACCTCCATGTTAGAGTCTGTGCTCCCA
GAGGTTACTATAGAAACCTACAGCCAGCAACAGAGCTCTCAAGGCAGCAGAAGTGAATCAGTGAAG
AGCAGTGCAGCTAAAGCATTGGAAACGATGGCAGAGCAGACCACTGATGTGGTGCCTCTCCATCCAC
AGACACAACACCAGGCCAGACAGAGGCAGCACTGGCTAAAGACATAGAAGAGATCACCAAGCCAGAT
GTGATATTGGCAAATGTACGCAGCCACTACTGAATCGGATATGTTCTGGCCAGGACATGGAACACTAC
TCACAGGAACAGAGGCAGCCACGCTAACAATATCATATTGCCTACAGAACCAGACGAATCTTCAACCAA
GGATGTAGCACCACTATGGAAGAAGAAATGTCCAGGCAATGATACGACATCCCCAAAGAAACAGAG
ACAACACTTCAAATAAAATGGACTTGGCACCCTGAGGATGTGTTACTTACAAAGAAACAGAACTAG
CCCCAGCAAGGGCATGGTTTCACTCTCAGAAATAGAAGAGGCTCTGGCAAAGAATGATGAGTCTCTGC
AGAAATACCTGTGGCTCAGGAGACAGTGGTCTCAGAAACAGAGGTGGTCTGGCAATAGAAGTGGTACTG
CCCTCAGATCCCATAACAACATTGACAAAGGATGTGACTCTCCCTTAGAAGCAGAGAGACCGTTGGTGA
CGGACATGACTCCATCTCTGAAACAGAAATGACCCTAGGCAAAGACAGCTCCACCCACAGAAACAAA
TTTGGCATGGCCAAAGACATGTCTCCACTCCAGAATCAGAAGTACTCTGGGCAAGGACGTGGTTATA



[View online »](#)

CTTCCAGAAACAAAGGTGGCTGAGTTTAAACAATGTGACTCCACTTTCAGAAGAAGAGGTAACCTCAGTCA
 AGGACATGTCTCCGTCTGCAGAAACAGAGGCTCCCCTGGCTAAGAATGCTGATCTGCACTCAGGAACAGA
 GCTGATTGTGGACAACAGCATGGCTCCAGCCTCCGATCTTGCACTGCCCTTGAAACAAAAGTAGCAACA
 GTTCCAATTAAGACAAAGGAACGTACAGACTGAAGAAAAACCAGTGAAGACTCCCAGTTAGCATCTA
 TGCAGCACAAGGGACAGTCAACAGTACCTCCTTGACGGCTTACCAGAACCAAGCTCAAAGCTGCAGAAC
 AATGTCTACCTTACCAATAGATGCACCTTCTCCATTAGAGAACTAGAGCAGAAGGAAACGCCTGGCAGC
 CAGCCTTCTGAGCCTTGGCTCAGGAGTATCCCGCAAGAAGAAGCAAGGCTGCTAGGTGTGATGGAA
 ATGACACTACTACCCCGCAAACAAGGAGCCACCACCAAGCCAGAAAAGAAAGCAAGCCTTTGGCCAC
 CACTCAACCTGCAAAGACTTCAACATCGAAAGCCAAAACACAGCCCACTTCTCTCCCTAAGCAACCAGT
 CCCACCACCTCTGGTGGTTGAATAAAAAACCATGAGCCTCGCCTCAGGCTCAGTGCCAGCTGCCCCAC
 ACAACAGCCTGCTGCTGCCACTGCTACTGCCAGGCTTCCACCCTACCTGCCAGAGACGTGAAGCCAAA
 GCCAATTACAGAAGCTAAGTTGCCGAAAAGCGGACCTTCCATCCAAGCCTTCTGCCCCAGCCCTC
 AACCTGGACCTAAAACCACCCCAACCGTTTCAAAGCCACATCTCCCTCAACTTGTGTTCCACTGGAC
 CAAGTAGTAGAAGTCCAGCTACAACCTGCCTAAGAGGCCAACCAAGCATCAAGACTGAGGGGAAACCTGC
 TGATGTCAAAGGATGACTGCTAAGTCTGCCTCAGCTGACTTGAGTCGCTCAAAGACCACCTCTGCCAGT
 TCTGTGAAGAGAAACACCACTCCCACTGGGGCAGCACCCCCAGCAGGGATGACTTCCACTCGAGTCAAGC
 CCATGTCTGCACCTAGCCGCTTCTTCTGGGGCTCTTCTGTGGACAAGAAGCCCACTTCCACTAAGCCTAG
 CTCTCTGCTCCCAGGCTGAGCCGCTGGCCACAACCTGTTTCTGCCCTGACCTGAAGAGTGTTCGCTCC
 AAGGTCGGCTCTACAGAAAACATCAAACACCAGCCTGGAGGAGCCGGCCAAAGTAGAGAAAAAACAG
 AGGCAGCTACCACAGCTGGGAAGCTGAACCTAATGCAGTCACTAAAGCAGCCGGCTCCATTGCGAGTGC
 ACAGAAACCGCCTGCTGGGAAAGTCCAGATAGTATCAAAAAAGTGAAGTACAGCCATATCAATCCAAG
 TGTGGTCCAAGGACAATATTAAGCATGTCCCTGGAGTGGCAATGTTTCCAGATTCAGAACGAAAAGTGG
 ACATATCCAAGGTCTCCTCAAGTGTGGGTCAAAGCTAATATCAAGCACAAGCCTGGTGGAGGAGATGT
 CAAGATTGAAAGTCAGAAGTTGAACCTCAAGGAGAAGGCCAAGCCAAAGTGGGATCCCTTGATAACGCTG
 GGCCACTTGCCTGCAGGAGGTGCCGTGAAGACTGAGGGCGGTGGCAGTGAGGCCCTTCCGTGCCAGGCC
 CCCCCGCTGGGGAGGAGCCAGTCACTCCCTGAGGCTGCGCCTGACGCTGGCGCCCTACTTCAGCCAGTGG
 CCTCAGTGGCCACACCACCTGTGAGGGGTGGTGACCAAAGGGAGCCCCAGACCTTGGACAGCCAGATC
 CAGGAGACAAGCATC

ACGCGTACGCGGCGCTCGAG – GFP Tag – GTTTAA

Protein Sequence:

>MG211669 representing NM_008633
 Red=Cloning site Green=Tags(s)

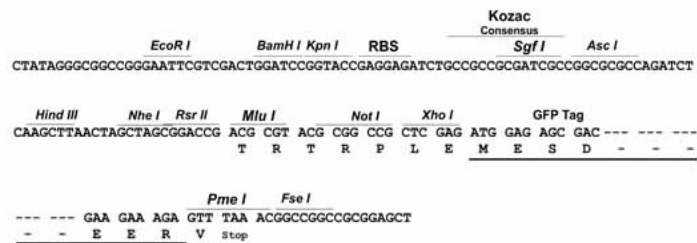
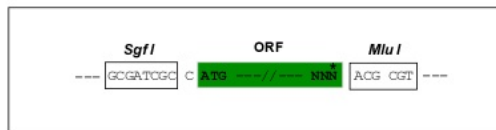
MADLSLVDALTEPPPEIEGEIKRDFMAALEAEPYDDIVGETVEKTEFIPLLDGDEKTGNSESKKKPCLDT
 SQVEGIPSSKPTLLANGDHGMEGNNTAGSPTDFLEERVDYDPYQSSQNWPEASFCFQPQQVLDTDQAEF
 FNEHRDDGLADLLFVSSGPTNASAFTERDNPSEDSYGMLPCDSFASTAVVSQEWVSVGAPNSPCSESCVSP
 EVTIETLQPATELSKAAEVESVKEQLPAKALETMAEQTTDVVHSPSTDTTPGPDTEAALAKDIEEITKPD
 VILANVTQPSTESDMFLAQDMELLTGTEAAHANNIILPTEPDESSTKDVAPPMEEEIVPGNDTTSPKETE
 TTLPIKMDLAPPEDVLLTKETELAPAKGMVSLSEIEEALAKNDESSAIPVAQETVVSETEVVLAIIEVVL
 PSDPITTLTKDVTLPLEAERPLVDMTPSLETETLTKETAPPTETNLGMADMSPLPESEVTLGKDVVI
 LPETKVAEFNNVPLSEEEVTSVKDMSPSAETEAPLAKNADLHSGTELIVDNSMAPASDLALPLETKVAT
 VPIKDKGTVQTEKPREDSQLASMQHKGQSTVPPCTASPEPVKAAEQMSTLPIDAPSLENLEQKETPGS
 QPSEPCSGVSRQEEAKAAVGVGTGNDITTPPNKEPPPSPEKKAKPLATTQPAKTSTSKAKTQPTSLPKQPA
 PTTSGGLNKKPMSLASGSVPAAPHKRPAATATARPSTLPARDVKPKPITEAKVAEKRTSPSKPSSAPAL
 KPGPKTTPTVSKATSPSTLVSTGPPSSRPATTLPKRPTSIKTEGKPADVKRMTAKSASADLSRSKTTASAS
 SVKRNTTPTGAAPPAGMTSTRVKPMSAPSRSSGALSVDKKTSTKPSSSAPRVSRRLATTVSAPDLKSVRS
 KVGSTENIKHQPGGGRKVEKKTEAATTAGKPEPNAVTKAAGSIIASAQKPPAGKVQIVSKVSYSHIQSK
 CGSKDNIKHVPGGGNVQIQNKKVDISKVSSKCGSKANIKHKPGGGDVKIESQKLNFKKAQAKVGSGLDNDV
 GHLPAAGAVKTEGGGSEALPCGPPPAGEEPIPEAAPDAGAPTSASGLSGHTTLLSGGGDQREPQTLDSQI
 QETSI

TRTRPLE – GFP Tag – V

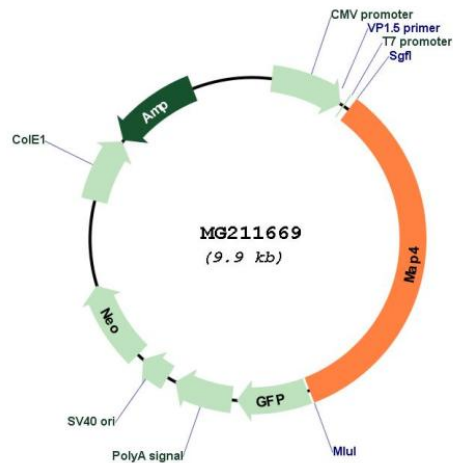
Restriction Sites: SgfI-MluI

Cloning Scheme:

Cloning sites used for ORF Shuttling:



Plasmid Map:



ACCN: NM_008633

ORF Size: 3375 bp

OTI Disclaimer: The molecular sequence of this clone aligns with the gene accession number as a point of reference only. However, individual transcript sequences of the same gene can differ through naturally occurring variations (e.g. polymorphisms), each with its own valid existence. This clone is substantially in agreement with the reference, but a complete review of all prevailing variants is recommended prior to use. [More info](#)

OTI Annotation: This clone was engineered to express the complete ORF with an expression tag. Expression varies depending on the nature of the gene.

Components: The ORF clone is ion-exchange column purified and shipped in a 2D barcoded Matrix tube containing 10ug of transfection-ready, dried plasmid DNA (reconstitute with 100 ul of water).

Reconstitution Method:

1. Centrifuge at 5,000xg for 5min.
2. Carefully open the tube and add 100ul of sterile water to dissolve the DNA.
3. Close the tube and incubate for 10 minutes at room temperature.
4. Briefly vortex the tube and then do a quick spin (less than 5000xg) to concentrate the liquid at the bottom.
5. Store the suspended plasmid at -20°C. The DNA is stable for at least one year from date of shipping when stored at -20°C.

RefSeq: [NM_008633.1](#), [NP_032659.1](#)

RefSeq Size: 5681 bp

RefSeq ORF: 3378 bp

Locus ID: 17758

UniProt ID: [P27546](#)

Cytogenetics: 9 59.83 cM

Gene Summary: Non-neuronal microtubule-associated protein. Promotes microtubule assembly.
[UniProtKB/Swiss-Prot Function]