

Product datasheet for **MG211664**

Mybpc1 (NM_175418) Mouse Tagged ORF Clone

Product data:

Product Type:	Expression Plasmids
Product Name:	Mybpc1 (NM_175418) Mouse Tagged ORF Clone
Tag:	TurboGFP
Symbol:	Mybpc1
Synonyms:	8030451F13Rik
Mammalian Cell Selection:	Neomycin
Vector:	pCMV6-AC-GFP (PS100010)
E. coli Selection:	Ampicillin (100 ug/mL)
ORF Nucleotide Sequence:	>MG211664 representing NM_175418 Red=Cloning site Blue=ORF Green=Tags(s)

TTTTGTAATACGACTCACTATAGGGCGGCCGGAATTCGTCGACTGGATCCGGTACCGAGGAGATCTGCC
GCC**CGATCGC**C

ATGCCAGAACCCACTAAGAAAGAGGAAAATGAAGTGTCCGCCCCAGCCCCCCCCGGAAGAACCAAATA
AAGAGAAAGAGGGCGGAACCGCTCCAGCAAAGAATGGTCTCTTGGTGAGTCACCTGCTGGCGGGGAAGA
GCAGGACAAACAGAATGCCAACTCCAGCTGTCCACCTGTTTGTGAAAAACCTCAAACCGGATCGGTG
AAAGTTGGTGCAAACATCACCTTGTAGCCAAAGTTAGGGCTGAAGATCTTCTAGAAAACCCACTGTCA
AATGGTTCAAGGGGAAATGGATGGATCTGGCCAGCAAAGCCGGAAACACCTGCAGCTGAAGGAGACCTT
CGAGAGGCAAACCTCGGTATACACATTCGAGATGCAGATCATCAAAGCCAAAGAGAACTACGCAGGGAAT
TATAGGTGTGAGGTCACCTACAAGGATAAATTTGACAGCTGTTCCGTTTGATCTTGAAGTCCATGAGTCTA
CTGGGACTACTCCAAACATTGACATCAGATCTGCCTTCAAAGAAGTGGAGAAGGTCAAGAGGATGCAGG
GGAACCTTGACTTTAGTGGTCTCCTGAAACGTAGGGAGGTGAAGCAGCAGGAAGAGGAGCCTGAGATAGAC
GTGTGGGAGCTGCTGAAAAATGCCAACCCCAACGAATACGAGAAGATCGCTTCCAGTATGGCATCACCG
ACTTGCCTGGCATGCTTAAGCGGCTCAAGCGCATGCGCAGGGTGGAAAAGAAGAGCGCAGCTTTTGCAA
AATTCTCGATCCTGCATATCAGGTGGATAAAGGAGGCAAAGTGAATTTGTCGTGGAGTTGGCAGACCCA
AAACTGGAGGTGAAATGGTTTAAAAATGGCCAAGAGATTCGACCCAGCACAAAATACATCTTTGAGCACA
AAGGAAACGAGAGAATCATGTTTATTAATAACTGTTTCGCTGACAGATGATTCGGAGTACTATGTGACAGC
TGGAGATGAGAAATGTTCTACTGAGCTCTTTGTAAAGAGAGCCTCAATCATGGTGACTAAGCAGCTGGAA
GACATGAACGCTTACTGTGGGAGAGGGTAGAGATGGAAGTTGAGGTGTCTGAAGATGACCCAATGTAA
AATGGTTTAAAGATGGTGAAGAGATCTTCCCTGGTCCAAAGTCAAGATACAAGATTAAGTTGAAGGCAA
AAAGCACACGTTGATCATAGAAGGGCAACAAAGGCTGACAGTGCAGGACTACTCAGCCATGACAACCGGG
GGACAATCATCTGCCAACTCAGCGTTGACTTGAGACCTTAAAGATCACGACGCTCTGACGGACCAGA
CAGTAAAACCTGGGAAAGAAGTATGCTTGAAGTGTGAAATCTCTGAAAATGTACCAGGAAAATGGACAAA
AAATGGCCTCCCTGTTCCAGGAGGTGAGCGTCTGAAGTGTGTTTACAAGGAAGAATCCACAAGTTAGTC



[View online »](#)

ATAGCCAATGCTCTCATTGAAGATGAAGGTGAATATGTATTTACACCAGATGCCTACAATGTTCCCTTTGT
 CTGCCAAAGTTTCATGTCATCGACCCTCCCAAGATCATCCTGGATGGCCTGGATGCTGATAACACAGTGAC
 AGTGATAGCTGGAAGCAAGCTTCGCCTGGAGATTCTGTACAGGGGAACCACCTCCCAAAGCCATCTGG
 AGCCGAGCAGATAAAGCTATTATGGAAGGCAGTGGTCGGATCAGGGCAGAATCCTACCCTGACAGCAGCA
 CACTGGTCATTGACGTGGCAGAGAGAGACGACTCTGGTGTGTACAACATAAATCTGAAAAATGAGGCTGG
 AGAAGCACATGCAAGCATCAAGATTAAGGTTGTGGATATCCCTGATCCTCCAGTGGCACCACAAATGTGACA
 GAAGTGGGAGATGACTGGTGCATCATGAACTGGGAGCCTCTGCCTATGATGGAGGCTCTCCAATCTTAG
 GATACTTTATTGAGAGGAAAAAGAAACAAGCTCCAGGTGGATGAGACTGAATTCGATCTCTGCAAAGA
 GACAACTTTTGAGCCCAAGAAGATGATTGAAGGCGTGGCCTACGAGGTCCGAATCTTTGCGGTCAACGCC
 ATTGGCATCTCCAAGCCAGTATGCCCTCCAAGCCCTTTGTTCTTTGGCTGTGACCAGCCCTCCTACTC
 TTCTGGCTGTGACTCCGTGACTGACTCGTCTGTGACGATGAAGTGGAGGCCCCAGATCAGATTGGCGC
 AGCAGGTTTAGATGGCTATGTGCTAGAGTATTGCTTTGAAGGAAGTGGAGTGGATAGTTGCAAACACA
 GACCTGATCGACAAGACCAAGTTCACCATCAATGGTCTGCCACGGATGCGAAGATCTTTGTACGTGTGA
 AGGCTATTAACCGGGCTGGGCTAGTGAGCCCAAGTACTATTCTCAGCCCATCTTGTGAAGGAAATCAT
 TGAGCCACCAAAGATTCGCATCCCAAGGCATCTGAAGCAAACCTACATCCGAGAGTCGGAGAAGCTGTC
 AATCTGGTGATTCTTTTCAGGGTAAACCAAGACCAGAGTTGACCTGGAAGAAGGACGGTGAAGAAATTG
 ACAAGAATCAAATAAACATTCGCAACTCAGAACTGATACCATCATATTATCCGAAAGCAGAGCGGAG
 CCACTCGGGCAAGTACGACCTGCAGGTCAAAGTGGATAAATACGTGGAAGTGCCTATTCGACATCCAG
 ATTGTTGACCGTCCAGGTCCACCCAGACTGTGACTATTGAAGATGTGTGGGAGAGAATGTTGCCCTAA
 CATGGACACCACCAAAGGACGATGGGAATGCTGCCATCACAGGGTACACCATCCAGAAGGCCGACAAGAA
 AAGCATGGAATGGTTCACCGTATTGAACATTACCACCGAACCAACGCCACCATTACTGAGCTGGTCATA
 GGAACGAGTATTACTTCGGGCTTTGCTGAAAAATGTGCGGCCTTAGCGAGGATGCAACTATGACGA
 AGGAGAGTGCAGTGATTGCCAAGGACGGTAAGATCTATAAAAAATCCAGTGTACGAAGATTCAAATTCAC
 AGAGGCCCCCATGTTTACTCAACCTTTGGTTAACACCTATGCCATCGCTGGTTACAATGCCACCCCTGAAC
 TGCAGCGTCCGAGGAAATCCCAAGCCAAAATCACCCTGGATGAAAAACAAAGTGGCTATTGTGGATGACC
 CAAGATACAGAATGTTACGAACCAAGGAGTCTGTACCCTGGAGATCCGCAAGCCTAGTCTTATGACGG
 AGGCACGTAAGTCTGCAAGCAGTCAATGACCTCGGGACGGTGGAGATTGAATGCAAACCTGGAGGTGAAA
 GTCGTAGCACAG

ACGCGTACGCGGCCGCTCGAG – GFP Tag – GTTTAA

Protein Sequence:

>MG211664 representing NM_175418
 Red=Cloning site Green=Tags(s)

MPEPTKKEENEVSAPAPPPEEPNKEKEAGTAPAKEWSLGESPAGGEEQDKQNANSQLSTLFVEKPQTGSV
 KVGANITFVAKVRAEDLLRKPTVKWFKGKWMDLASKAGKHLQLKETFERQTRVYTFEMQI IKAKENYAGN
 YRCEVYKDKFDSCSFDLEVHSTGTTPNIDIRSAFKRSGEGQEDAGELDF SGLLKRREVKQEEEEPEID
 VWELLKNANPNEYEKIAFYQGITDLRGLKRLKRMRRVEKKSAAFAKILDPAYQVDKGGKVRFFVELADP
 KLEVKWFKNGQEIRPSTKYIFEHKGNERIMFINNCSLTDSEYVYTAGDEKSTELFVREPPIMVTKQLE
 DMNAYCGERVEMEVEVSEDDANVWFKNGEEIFPGPKSRYKIKVEGKKHTLIIEGATKADSAEYSAMTTG
 GQSSAKLSVDLRPLKITPLTDQTVKLGKEVCLKCEISENVPGKWTNGLPVQGERLKVHVKGRHKLKLV
 IANALIEDEGEYVFTPDAYNVPLSAKVHVIDPPKIILDGLDADNTVTVIAGSKLRLEIPVTGEPPIKAIW
 SRADKAIMEGSGRIRAESYPDSSLVIDVAERDDSGVYNINLKNEAGEAHASIKIKVVDIPDPPVAPNVT
 EVGDDWCIMNWEPPAYDGGSPILGYFIERKKKQSSRWMLNFDLCKETTFEPKMIIEGVAYEVRIFAVNA
 IGISKPSMPSKPFVPLAVTSPPTLLAVDSVTDSSVTMKWRPPDQIGAAGLDGYVLEYCFEGTEDWIVANT
 DLIDKTFINGLPTDAKIFVRVKAINAAGASEPKYYSQPILVKEIIEPPKIRIPRHLKQTYIRRVGEAV
 NLVIPFQGKPRPELTWKKDGEEDKNQINIRNSETDTIIFIRKAERSHSGKYDLQVKVDKYVENASIDIQ
 IVDRPGPPQTVTIEDVWGENVALTWTPPKDDGNAITGYTIQKADKKSMEWFTVIEHYHRTNATITELVI
 GNEYFRVFAENMCGLSEADATMTKESAVIAKDGKIYKNPVYEDFNFTAPMFTQPLVNTYAIAGYNATLN
 CSVRGNPKPKITWMKNKVAIVDDPRYRMFSNQGVCTLEIRKPSPYDGGTYCCKAVNDLGTVEIECKLEVK
 VVAQ

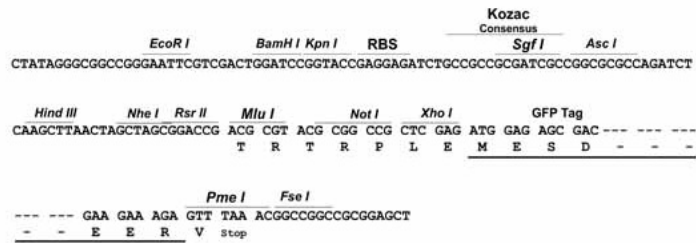
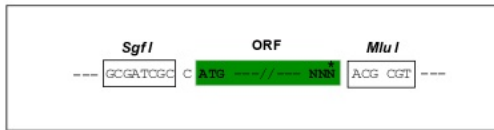
TRTRPLE – GFP Tag – V

Restriction Sites:

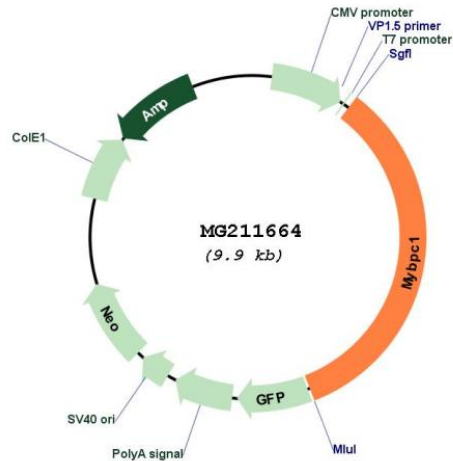
SgfI-MluI

Cloning Scheme:

Cloning sites used for ORF Shuttling:



Plasmid Map:



ACCN: NM_175418

ORF Size: 3372 bp

OTI Disclaimer: The molecular sequence of this clone aligns with the gene accession number as a point of reference only. However, individual transcript sequences of the same gene can differ through naturally occurring variations (e.g. polymorphisms), each with its own valid existence. This clone is substantially in agreement with the reference, but a complete review of all prevailing variants is recommended prior to use. [More info](#)

OTI Annotation: This clone was engineered to express the complete ORF with an expression tag. Expression varies depending on the nature of the gene.

Components: The ORF clone is ion-exchange column purified and shipped in a 2D barcoded Matrix tube containing 10ug of transfection-ready, dried plasmid DNA (reconstitute with 100 ul of water).

Reconstitution Method:

1. Centrifuge at 5,000xg for 5min.
2. Carefully open the tube and add 100ul of sterile water to dissolve the DNA.
3. Close the tube and incubate for 10 minutes at room temperature.
4. Briefly vortex the tube and then do a quick spin (less than 5000xg) to concentrate the liquid at the bottom.
5. Store the suspended plasmid at -20°C. The DNA is stable for at least one year from date of shipping when stored at -20°C.

RefSeq: [NM_175418.5](#)

RefSeq Size: 3869 bp

RefSeq ORF: 3375 bp

Locus ID: 109272

Cytogenetics: 10 C1