

Product datasheet for **MG211640**

Ubap2l (NM_028475) Mouse Tagged ORF Clone

Product data:

Product Type:	Expression Plasmids
Product Name:	Ubap2l (NM_028475) Mouse Tagged ORF Clone
Tag:	TurboGFP
Symbol:	Ubap2l
Synonyms:	3110083O19Rik; 4932431F02Rik; A430103N23Rik; C77168; mKIAA0144; Nice-4
Mammalian Cell Selection:	Neomycin
Vector:	pCMV6-AC-GFP (PS100010)
E. coli Selection:	Ampicillin (100 ug/mL)
ORF Nucleotide Sequence:	>MG211640 representing NM_028475 Red=Cloning site Blue=ORF Green=Tags(s)

TTTTGTAATACGACTCACTATAGGGCGGCCGGAATTCGTCGACTGGATCCGGTACCGAGGAGATCTGCC
GCC**CGATCGCC**

ATGATGACGTCGGTGGGCACTAACCGAGCCCGGGAACTGGGAACAACCTCAAACCAAACCAGACAC
AGCACAAGCAGCGGCCACAGGCCACTGCAGAGCAAATTCGACTTGACAGATGATTTGGACCATAATGA
TGCTGACTTTGAGGAGAAGGTGAAACAATTGATTGATATCACAGGCAAAAACCAGGATGAATGTGTGATT
GCTTTGCATGACTGCAATGGAGATGTCAACAGAGCCATCAATGTTCTCCTGGAAGGAAATCCAGACACGC
ATTCCTGGGAGATGGTTGGGAAGAAGAAAGGAGTCTCAGGACAAAAGGATGGTGGACAACTGAATCTAA
TGAAAGAAGGAAAAGAAAATCGAGACCGGGACAGAGACTATAGTCGCGCAGCTGGTGGGCCACCAAGACGG
GGGAGAGGTGCCAGCCGTGGACGAGAGTTTCGGGGCCAGGAAAATGGATTGGATGGCACCAAGAGTGGAG
GGCCTTCTGGAAGAGGCACAGACAGAGGCGAAGAGGCCGTGGCCGTGGCAGAGGTAGTTCTGGTAGGCG
AGGAGGAAGGTTTTCTGCTCAAGGAATGGGAACCTTTAACCCAGCTGATTATGCAGAGCCAGCCAACACT
GATGATAACTATGGCAATAGCAGTGGCAATACATGGAACAACACTGGCCACTTTGAACCAGATGATGGAA
CAAGACTTGATTTCAATGGGGTTGAGGGGTCAAATATCCCCGAAAATTTGAGACTGCTCCTGGTGCATG
GAGGACTGCAACAGAAGAGTGGGAACTGAAGACTGGAATGAAGATCTTTCTGAGACCAAGATCTTTACC
GCCTCTAATGTGCTTTCAGTGCCTCTGCCTCGGAGAATGTGACAATCACTGCTGGTCAGAGAATTGACC
TTGCTGTTCTGTTGGGGAAGACACCATCTTCAATGGAGAATGATTCATCTAATCTGGATCCATCTCAGGC
TCCTTCCCTGGCTCAGCCTCTGGTGTAGTAATTCGAAGCAGAATGCCATATCACAGCCTGCTCAGGG
AGTACATTTTCTCACCATAGCATGGTGAGCATGTTGGGAAAGGATTTGGTGATGTTGGGGAAGCTAAAG
GTGGCAGTACAACAGGCTCCCAGTTCCTGGAGCAATCAAGACTGCGCAGGCCCTTGCTCAACTGGCAGC
TCAACATTCTCAATCTGGAAGCACTACCACCTCCTCTGGGATATGGGCTCAACAACACAATCACCATCA
CTGGTGCAGTATGATCTGAAGAGTGCAATGATCAACAGTGCACAGTCTTTTACAAGCGCCAGGCAT
TCACCCCATCTCAACCATGATGGAGGTATTCCTTCAGGAGAAGCCACCTGCAGTGGCTACCTCGACAGC
TGACCACCTCCCCGTCTCTCCTCTGCAAGCAAATCCACCTCGGCTCCACAGATGTCTCCGGGTCT



[View online »](#)

TCAGACAACCAGTCTCCAGCCCTCAGCCGGCTCAGCAGAACTGAAACAGCAAAAGAAGAAAACCTCTCT
 TGACGTCTAAGATTCTGCTCTGGCTGTGGAGATGCCTGGCTCAGCAGATATCTCAGGGCTAAATCTACA
 GTTTGGGGCATTGCAGTTTGGGTCAGAGCCTGTCTTTCTGATTATGAGTCCACCCACCACGAGCGCC
 TCCTCAAGCCAGGCTCCTAGTAGCCTGTATACCAGCACGGCCAGTGAGTCTTATCTACAGTTTCATCTA
 ATCAGAGTCAGGAGTCTGGTTATCAGAGTGGCCGATTAGTGCACAACCTATACCTCCAAAATAATGC
 TCAGGGCCCTCTATATGAACAGAGATCCACACAGACGCGGGGTATCCCAGCTCCATCTCTTCATCACC
 CAAAAGGACCTGACTCAGGCTAAGAATGGTTTTAGCTCTGTGCAGGCCACGCACTTACAGCCACGCAAT
 CTGTTGAAGGTGCTACAGGCTCTGCAGTGAATCTGAATCACCTTCCACTTCTAGTATACCTCTCTCAA
 TGAACAGTACCTGCAGCTTCTTACTGACGACAGCCAATCAGCATTTCCTCTTAAAGTGGCTTGAGC
 CATAACGGAGGAGATTCCAAATACCACCACACACAACATAGCAGTGCATTATCTACACAGCAGAATACCC
 TTTCTTCAACATCTTCTGGGCTACTTCAACATCCACTCTTTTGCATAACAAGTGGAGAGTGAGGC
 AAATCTACATTCTTCTCCAGCACCTTCTTACCACATCCAGCACTGTCTCTGCACCTCCCCAGTGGTC
 AGTGTCTCTCCAGTCTGAATAGTGGCAGTAGTCTGGGCTTACCTGGGAGCAACTCTACTGTCAGAG
 CCTCAACTCGAAGCTCAGTTGCTACAACCTCAGGAAAAGCTCCTCCCACTTCTCTGGAGTCCCGCC
 ATTGTTGCCTAATCCATATATTAGGCTCCGGGCTGTTACATGCCTATCCGCCACAAGTATATGGTTAT
 GATGATTTACAGATGCTCCAGACAAGATTTCCATTGGATTACTACAGTATCCCGTTCCACACCCACCA
 CTCCACTTACTGGGAGGGATGGTAGCCTGGCCAGCAACCCCTTACTCTGGCAGCTCACCAAAATCGGCCG
 CGGGGATGCCTCTCCCCAGCCAGCCACAACCTTGGCCCAACCCCAACAGAACCAGACGAGACTCAC
 CACACCACGCAGCAGACATTCTGAACCCGGGCTGCCTCTGGCTATAGTTACACCAGCCTGCCATACT
 ACACAGGGGTCCCGGGCTCCCCAGCACCTCCAGTATGGGCTGCTGTGTTCCCTGTGGCTCTACCTC
 TTCCAAGCAGCATGGTGTGAATGTCAGTGTGAATGCCTCGGCTACCCCTTCCAACAGCCAAGTGGAT
 GGGTCTCATGGATACAACACTGGTGTGTCAGTCACTCCAGTAAACAGGGGCTGCCAGATATACCGGTT
 CTGTGTACTCCAAAACCCAGCAGTCTTTGAGAAACAAGGGTTTTCATTCCGGTACTCTGCTGCCTT
 CAACTTGCTTACGCCCTAGGAAGTGGAGGGCCATCAATCCAGCCACAGCTGCTGCTACCCACCTGCC
 CCCTTTATGCATATTCTGACCCACATCAGCAGCCACACTCTCAGATCCTTACCATCACCTGCAGCAGG
 ATGGCCAGCTACCATATTTGCAGATGATTCTCTGTTGCCAGCGCCAGCAGGAGGAGCAGGATATCTCAC
 TCTCGTCGATGACCAGCTTGGTAA

ACGCGTACGCGGCCGCTCGAG - GFP Tag - GTTTAA

Protein Sequence:

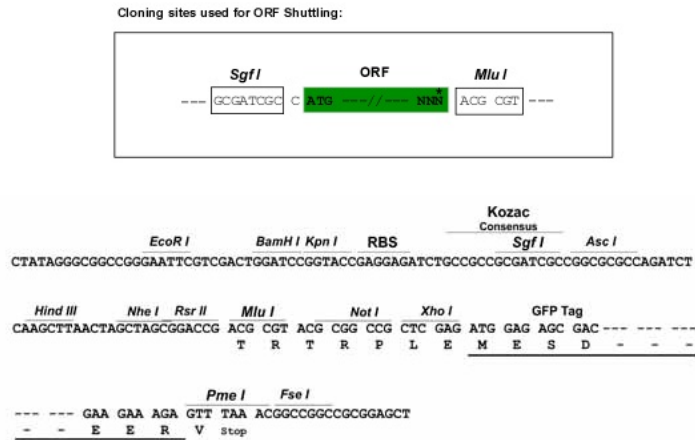
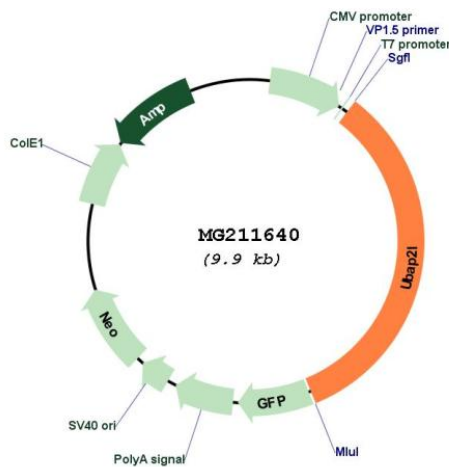
>MG211640 representing NM_028475
 Red=Cloning site Green=Tags(s)

MMTSVGTNRARGNWEQPQNQNTQHKQRPQATAEQIRLAQMI SDHNDADFEKVKQLIDITGKNQDECVI
 ALHDCNGDVNRAINVLLLEGPNPDTHSWEMVGKKKGVSGQKDGQTESNEEGKENRDRDRDY SRRRGPPRR
 GRGASRGREFRQENGLDGTKSGGPSGRGTDGRRRGRGRGRGSSGRRGGRF SAQMGTFNPADYAE PANT
 DDNYGNSSGNTWNNTGHFEPDDGTRLDF IGVESNYPRKFETAPGAWRTATEEWGTEDWNEDLSETKIFT
 ASNVSSVPLPAENVITITAGQRIDLAVLLGKTPSSMENDSSNLDP SQAPSLAQPLVFSNSKQNAISQPASG
 STF SHSMV SMLGKFGDVG EAKGGSTTGSQFLEQFKTAQALAAQHSQSGSTTTSSWDMGSTTQSPS
 LVQYDLKSANDSTVHSPFTKRQAFTPSSTMMEVFLQEKPPAVATSTAAPPPSSPLPSKSTSAPQMPGS
 SDNQSSSPQAQQLKQKKTSLTSKIPALAVEMPGSADISGLNLQFGALQFGSEPVLSDYESTPTTSA
 SSSQAPSSLYTSTASESSSTVSSNQSQESGYQSGPIQSTTYTSQNNAQGPLYEQRSTQTRRYPSSISSP
 QKDLTQAKNGFSSVQATQLQTTQSVEGATGSAVKSESPSTSSIPSLNETVPAASLLTTANQHSSSLGSL
 HTEEIPNTTTTQHSSALSTQNTLSSSTSSGRTSTSTLLHTSVESEANLHSSSSTFSTTSSSTVSAPPVV
 SVSSSLNSGSSLGLSLGSNSTVTASTRSSVATTSGKAPPNLP PGVPPLLPNPYIMAPGLLHAYPPQVYGY
 DDLQMLQTRFPLDYYSIPFPTTPTPLTGRDGLASNPYSGDLTKFGRGDASSPAPATTLAQPNQNTQTH
 HTTQQTFLNLPALPPGYSYTSLSLPHYTGVPGLPSTFYGPVAVFPVAPTSSKQHG VNVSVNASATPFQPSGY
 GSHGYNTGVSVTSSNTGVPDISGSVYSKTQSFQGFHSGTPAASFNLPSALGSGGPINPATAAAAYPPA
 PFMHILTPHQPHSQILHHHLQQDGLPYLQMI LCCQRQEEQDILTLVDDQLGE

TRTRPLE - GFP Tag - V

Restriction Sites:

Sgfl-MluI

Cloning Scheme:

Plasmid Map:


ACCN: NM_028475

ORF Size: 3315 bp

OTI Disclaimer: The molecular sequence of this clone aligns with the gene accession number as a point of reference only. However, individual transcript sequences of the same gene can differ through naturally occurring variations (e.g. polymorphisms), each with its own valid existence. This clone is substantially in agreement with the reference, but a complete review of all prevailing variants is recommended prior to use. [More info](#)

OTI Annotation: This clone was engineered to express the complete ORF with an expression tag. Expression varies depending on the nature of the gene.

Components:	The ORF clone is ion-exchange column purified and shipped in a 2D barcoded Matrix tube containing 10ug of transfection-ready, dried plasmid DNA (reconstitute with 100 ul of water).
Reconstitution Method:	<ol style="list-style-type: none">1. Centrifuge at 5,000xg for 5min.2. Carefully open the tube and add 100ul of sterile water to dissolve the DNA.3. Close the tube and incubate for 10 minutes at room temperature.4. Briefly vortex the tube and then do a quick spin (less than 5000xg) to concentrate the liquid at the bottom.5. Store the suspended plasmid at -20°C. The DNA is stable for at least one year from date of shipping when stored at -20°C.
RefSeq:	<u>NM_028475.3</u>
RefSeq Size:	4070 bp
RefSeq ORF:	3318 bp
Locus ID:	74383
UniProt ID:	<u>Q80X50</u>
Cytogenetics:	3
Gene Summary:	Plays an important role in the activity of long-term repopulating hematopoietic stem cells (LT-HSCs) (PubMed:25185265).[UniProtKB/Swiss-Prot Function]