

Product datasheet for **MG211630**

Myo1f (NM_053214) Mouse Tagged ORF Clone

Product data:

Product Type:	Expression Plasmids
Product Name:	Myo1f (NM_053214) Mouse Tagged ORF Clone
Tag:	TurboGFP
Symbol:	Myo1f
Synonyms:	C330006B10Rik
Mammalian Cell Selection:	Neomycin
Vector:	pCMV6-AC-GFP (PS100010)
E. coli Selection:	Ampicillin (100 ug/mL)
ORF Nucleotide Sequence:	>MG211630 representing NM_053214 Red=Cloning site Blue=ORF Green=Tags(s)

TTTTGTAATACGACTCACTATAGGGCGGCCGGAATTCGTCGACTGGATCCGGTACCGAGGAGATCTGCC
GCC**CGATCGCC**

ATGGGCAGCAAGGAGCGCTTTCCTACTGGCAGAGTCACAACGTGAAGCAGAGTGGAGTGGATGACATGGTGC
TGCTGCCAGATCACCGAGGACGCCATTGTGAGCAACCTCCGCAACCGTTTCATGGATGACTACATTTT
TACATACATTGGCTCAGTGCTAATCTCTGTAACCCCTTCAAGCAGATGCCCTACTTCACTGACCGAGAA
ATTGACCTCTATCAGGGCGGGCTCAATATGAGAATCCCCGCACATCTATGCCCTCACCGACAACATGT
ACCGGAATATGCTGATCGACTGTGAGAACCAGTGTGTCATTATCAGTGGGAGAGCGGAGCTGGGAAGAC
AGTGGCTGCTAAATACATCATGGCTACATCTCCAAGGTGTCTGGTGGGGAGACAAGGTCCAGCAGCTC
AAAGACATAATCCTACAGTCAAACCCACTGCTTGGAGGCTTTCGGCAATGCCAAGACCGTGCACAACA
ATTCCAGCCGCTTTGGCAAGTACTTTGAGATCCAGTTCAGTTCGAGGTGGAGAGCCAGATGGAGGCAAGAT
CTCCAACCTTCTGCTGGAAAAGTCTCGTGTGGTTCATGCAGAAATGAGAATGAGAGGAACTCCACATCTAC
TACCAGCTTCTGGAAAGGGCCTCCCAGGAGCAGCAGCAGAACCTAGGACTCATGACGCCAGACTACTACT
ACTACCTCAACCAATCAGACACCTACAAGGTGGAAGGCACTGATGACCGAAGTGAATTCAGCGAGACCT
GAGCGCCATGCAAGTCAATCGGGATCCGACAAGCGTGCAGCAGCTTGTCTTGCAGCTCGTGGCAGGGATC
TTGCACCTGGGGAACATCAGCTTCTGTGAAGAAGGGAATTATGCCCGCGTGGAGAGCGTAGACCTTTAG
CTTTCCAGCCTACCTGCTGGGCATAGACAGTGGGCGGCTGCAAGAGAAGCTGACCAGCCGTAAGATGGA
CAGCAAATGGGGTGGACGCACTGAGTCCATTGATGTGACCCTCAATGTGGAACAGGCAGCCTACACTCGT
GACGCACTGGCCAAGGGACTCTATGCCCGCTTCTCGACTTCTGGTGGAGGCCATCAACCGTGCCATGC
AGAAGCCTCAGGAAGAATACAGCATCGGCGTGTGACATCTACGGCTTTGAGATCTCCAGAAAAATGG
CTTTGAGCAGTTCTGCATCAACTTCGTCAATGAAAAGCTGCAGCAGATTTTTATTGAGCTCAGCTGAAG
GCAGAGCAGGAGGAGTATGTGCAAGAGGGCATCCGCTGGACCCCATCGAATACTTCAACAACAAAATTG
TGTGTGACCTCATCGAAAACAAGCTGAGCCCCCAGGCATCATGAGCGTGTAGATGATGTGTGTGCCAC
GATGCATGCTACCGGTGGCGGCGGACCAGACTGCTACAAAAGCTGCAAGCGCAGTGGGCACCCAC



[View online >](#)

GAGCACTTCAACAGCTGGAGCGCGGGTTTCGTCATCCATCACTATGCAGGCAAGGTCTCCTATGATGTCA
 GTGGCTTCTGTGAGAGGAATCGAGATGTGCTGTTCTCTGATCTTATAGAAGTGCAGTCCAGTGACCA
 GGACTTCTACGGATGCTCTTCTGAGAAGCTGAATATAGACAAGAAGGGCCGCCAGTACTGCTGGC
 TCCAAGATCAAGAAACAAGCCAACGACCTGGTGTCCACGCTGAAGAAGTGCACACCCACTACATCCGCT
 GCATCAAACCTAACGAGACCAAGCGTCCCCGGGACTGGGAGGAAAGCAGAGTGAAGCACCAGGTGGAGTA
 CCTGGGCTGCGGGAGAACATCCGAGTGCAGGAGGCGAGGCTTCGCTACCGTCCGAGTTCCTCAAAATTC
 CTGCAAAGGTATGCCATCCTGACCCCTGAGACATGGCCACGGTGGCGTGGAGATGAACCCAGGCTTCC
 AGCACCTGCTTCGTGCTGCAACATGGAGCCAGACCAGTACCAGATGGGGAGTACCAAGGTCTTTGTAA
 GAATCCTGAGTCGCTTTTCTCCTGGAAGAGATGCGAGAGAGGAAGTTTGACGGCTTCGCTCGCACTATC
 CAGAAAGCCTGGCGGCGCCATGTAGCAGTCCGAAAGTATGAAGAGATGCGGGAAGAAGCTTCAACATCC
 TACTGAACAAGAAGGAACGAAGGCGAAACAGCATCAACCGTAACTTCGTTGGGACTATCTGGGACTGGA
 GGAGCGGCTGAGCTGCGCCAGTTCCTGGCTAAAAGGGAACGAGTGGACTTTGCCGACTCAGTACCAAG
 TATGACCGCCGCTTCAAGCCTATCAAACGGGACTTGATCCTGACCCAAAGTGTGTATGTGATTGGGA
 GAGAGAAGGTGAAAAGGGGACCAGAGAAGGTCTAGTGCCTGAAGTCTGAAGAAGAACTGGATATCCA
 GGCCCTCCGAGGGGTGTCTCTCAGCACCCGACAGGATGACTTCTCATCCTTCAAGAAGAGGCTGCGGAC
 AGCTTCTTAGAAAAGTATCTTCAAGACCGAGTTTGTGACGCTTCTGTGCAAGCGTTTTGAAGAGGCAGCGC
 GCAGGCCCTTCCCTCACCTTCACTGACCTACTACAGTTCGGGTGAAGAAAGAAGGCTGGGGCGGAGG
 TAGTACCCGAAATGTACCTTCTCGCGGACAAAGTACTTGGCTGTGCTCAAGGCTGGGGTTCGAGCT
 CTCATATCAGCATTGGGACGGATTGCCTAAGAGCACCAGCCTACACGGAAGGGTTAGCCAGGGTA
 GACCTCGAAGGTGAGCGCAGGCTCCCACTCGAGCAGCCCTGGGCTCCAGAGGTTTGAATCGAAATGG
 GGTACCACCTCTTCCAGGTAAGGTCCCTACCCTGGAGTACATCTGGTAGGAGTCCCAGAGGCT
 CCACGGGCCCCTCATCCTCAACCCTAGGAGCCAGCAGACGTCCTCGAGCAGGCCACCTCAGAGCACA
 GTACAGAATTCTTAATGTGCTGACCAAGGTGTGGCAGGCATGCAAAGGAAGCGAAGTATAGGGCAGAG
 ACCTGTGCCAGGAGTGGGCGGCTAAGCCCAACACGACACATGGCCGAGGTGCGCGGACTGTAC
 CAATACATAGGCCAGGATGTGGATGAGCTGAGCTTTAACGTGAACGAAGTATTGAGATCCTCATAGAAG
 ACTCTTCTGGCTGGTGAAGGGTCGGCTTCATGGCCAGGAAGGTCTTTCCAGGAACTATGTGGAGAA
 GATC

ACGCGTACGCGGCCGCTCGAG – GFP Tag – GTTTAA

Protein Sequence:

>MG211630 representing NM_053214
 Red=Cloning site Green=Tags(s)

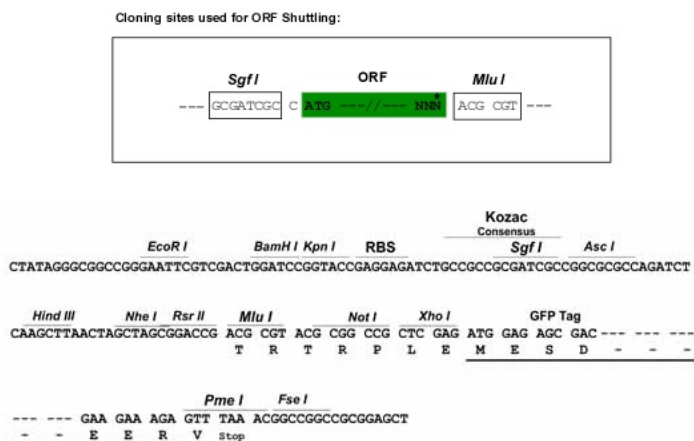
MGSKERFHWQSHNVKQSGVDDMVLPPQITEDAIVSNLRKRFMDDYIFTYIGSVLISVNPFKQMPYFTDRE
 IDLYQGAAQYENPPHIYALTDNMYRNMLIDCENQCVIISGESGAGKTVAAKYIMGYISKVSGGDKVQHV
 KDIIILQSNPLLEAFGNAKTVRNNSRFGKYFEIQFSRGGEPDGGKISNLFLEKSRVVMQNERNFHIY
 YQLLEGASQEQQLGLMTPDYYYLNSDQTYKVEGTDGDRSDFSETLSAMQVIGIPTSVQQLVLQVLVAGI
 LHLGNISFCEEYARVESVDLLAFPAYLLGIDSGRLQEKLTSRKMSDKWGRSESIDVTLNVEQAAAYTR
 DALAKGLYARLDFLVEAINRAMQKPQEEYSIGVLDIYGFEIFQKNGFEQFCINFVNEKLLQIFIELTLK
 AEQEEYVQEGIRWTPIEYFNKIVCDLIENKLSPPGIMSVLDDVLCATMHATGGGADQTLQLQAAVGTG
 EHFNSWSAGFVIHHYAGKVSVDVSGFCERNRDVLFSDLIELMQSSDQDFLRMLFPEKLNIDKGRPSTAG
 SKIKKQANDLVSTLKKCTPHYIRCIKPNETKRPRDWEESRVKHQVEYLGLENIRVRRAGFYRRQFSKF
 LQRYAILTPETWPRWRGDERQGVQHLLRAVNMEPDQYQMGSTKVFVKNPESLFLLEEMRERKFDGFARTI
 QKAWRRHVAVRKYEEMREEASNILLNKKERRRNSINRNFVGDYLGLEERPELRQFLAKRERVDFAVSVTK
 YDRRFKPIKRDILTPKCVYVIGREKVKRGPEKGLVREVLKKLDIQALRGVSLSTRQDDFFILQEEAAD
 SFLESIFKTEFVSLCKRFEEAARRPLPLTFSDLLQFRVKEGEGWGGSTRNVTFSRGTSDLAVLKAGGRA
 LTISIGDGLPKSTKPTRKGLAQGRPRRQAQAPTRAAPGPPRGLNRNGVPPSSQVRSLEITSGRSSQRP
 PRGPPSSTLGASRRPRARPPSEHSTFLNVPDQGVAGMQRKRSIGORPVPVGVGRPKPQRTHGPRCALY
 QYIQDQVDELSFNVEVIEILIEDSSGWWKGRHLHGQEGLFPGNYVEKI

TRTRPLE – GFP Tag – V

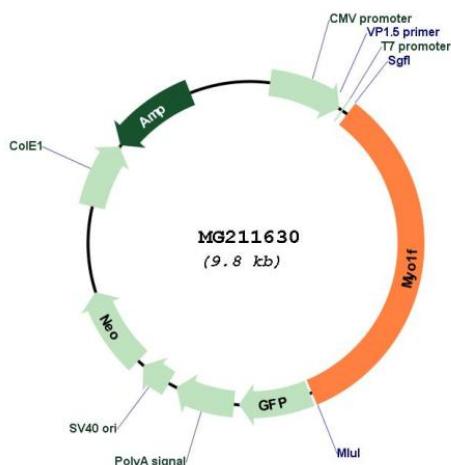
Restriction Sites:

Sgfl-MluI

Cloning Scheme:



Plasmid Map:



ACCN: NM_053214

ORF Size: 3294 bp

OTI Disclaimer: The molecular sequence of this clone aligns with the gene accession number as a point of reference only. However, individual transcript sequences of the same gene can differ through naturally occurring variations (e.g. polymorphisms), each with its own valid existence. This clone is substantially in agreement with the reference, but a complete review of all prevailing variants is recommended prior to use. [More info](#)

OTI Annotation: This clone was engineered to express the complete ORF with an expression tag. Expression varies depending on the nature of the gene.

Components:	The ORF clone is ion-exchange column purified and shipped in a 2D barcoded Matrix tube containing 10ug of transfection-ready, dried plasmid DNA (reconstitute with 100 ul of water).
Reconstitution Method:	<ol style="list-style-type: none">1. Centrifuge at 5,000xg for 5min.2. Carefully open the tube and add 100ul of sterile water to dissolve the DNA.3. Close the tube and incubate for 10 minutes at room temperature.4. Briefly vortex the tube and then do a quick spin (less than 5000xg) to concentrate the liquid at the bottom.5. Store the suspended plasmid at -20°C. The DNA is stable for at least one year from date of shipping when stored at -20°C.
RefSeq:	<u>NM_053214.2, NP_444444.2</u>
RefSeq Size:	3833 bp
RefSeq ORF:	3297 bp
Locus ID:	17916
Cytogenetics:	17 17.98 cM