

Product datasheet for **MG211602**

Wdhd1 (NM_172598) Mouse Tagged ORF Clone

Product data:

Product Type:	Expression Plasmids
Product Name:	Wdhd1 (NM_172598) Mouse Tagged ORF Clone
Tag:	TurboGFP
Symbol:	Wdhd1
Synonyms:	A630092E18; AND-1; D630024B06Rik
Mammalian Cell Selection:	Neomycin
Vector:	pCMV6-AC-GFP (PS100010)
E. coli Selection:	Ampicillin (100 ug/mL)
ORF Nucleotide Sequence:	>MG211602 representing NM_172598 Red=Cloning site Blue=ORF Green=Tags(s)

TTTTGTAATACGACTCACTATAGGGCGGCCGGAATTCGTCGACTGGATCCGGTACCGAGGAGATCTGCC
GCC**CGATCGCC**

ATGCCGGCCACACAGAAGCCCATGAGGTACGGACATACGGAAGGGCACACCGAAGTCTGCTTTGATGATT
CTGGAAGCTATATTGTGACTTGTGGCAGTGATGGTGATGTGAGGATGTGGGAAGACTTGGACGACGATGA
CCCTAAGTCCGTTAATGTTGGAGAAAAGGCATTTTCATGTGCTTTGAAGAATGGAAAATTTGGTCACTGCA
GTTTCTAATAATACCGTCCAAGTCTATACATTCCTGAAGGAGTCTCTGATGGCATATTAACACGCTTCA
CTACAAATGCAAACCATGTGGTCTTCAATGGGGCCGGCAACAAAATTGCTGCTGGTCAAGTGAATTTCT
GGTCAAAGTTGTGGATGTGATGGATAACAGCCAGCAGCAACATTTTCGAGGACATGATGCCCTGTTTTA
AGTCTGTCTTTTATCCTAAGGATATCTTTCTGGCATCGGCTAGTTGTGATGGAAGTGTCAAGGATGGA
ATATATCTGATCAGACCTGTGCTGTGCTGAGTGGCCAGTACTGCAAAAGAGCAATGACGTGGTGAACGCCAA
GTCCATCTGCAGACTCGCGTGGCAGCCCAAGGCCGGGAAGTTACTAGCAGTTCCTGTGAAAAATCTGTT
AAGCTGTACAGAAGAGAAACCTGGAGTAATCCATTCGATCTTTCAGATAGTTCATCTCCAGACTCA
ATATAGTAACCTGGTCTCCCTGTGGCAGTATTTGGCTGCAGGTGCTATTAATGGCTTAATTGTAGTTTG
GAATGTGGAACCAAGACTGCATGGAAGGGTAAAACATGAGAAAGGTTATGCAATTTGTGGCCTGGCC
TGGCATCCCCTTGTAGTCGGATATGTTATACTGATGTGGAAGGAAACCTGGAGTCTGGAAAATGTTT
GTGACCTCAGTGAAAGGTGTCGAGCAATAAGGGCATTATAAATGAGGATGACGATAATGATGACATCAT
GCTGGCTGCAGATCATGACTTGGGAGACGATGAAAACCTCAGTTGATGTTACAATGCTAAAAGCTGATCTT
TCTCACAAGAGGAAGGGGACGATGATCAGGCACGAAGTATTCACAACCTCCCCCTTATAAGACCCCAAA
GGCCATTTTATGATGGGCCATGCCAACCCACGACAAAAGCCCTTCCAGTCAAGTTCAACGCCCTTGCA
TCTCTCTCACAGATTCATGGTGTGGAACCTGTTGGGATTATTCGCTGCTATAACGACGATCAAGACAGT
GCCATAGACGTGGAGTTCATGACACCTCTATCCATCATGCAACACATCTATTAATGCTTTCAATTACA
CAATGGGAACCTTTCCCATGAAGCTATTTTGTGGCATGTGAAAGTGTGATGAATTAGCAAGCAAGCT
TCATTGCTGCATTCAGTTCTTGGGACTCAAGCAAAGAGTGGATGGTAGATATGCCCCAGAATGAGGAC



[View online »](#)

ATCGAAGCCATATGCCTCGGTCTAGGCTGGGCCGCTGCTGCTACCACTGCCTTGCTCCTTCGACTGTTCA
 CTATTGGAGGTGTTTCAGAAAAGAGTCTTCTGCCTTCTGGACCTGTGGTATCCATGGCAGGACACGGAGA
 ACAGCTTTGCATTGTTTATCATAGAGGTACAGGGTTTGTAGGAGATCAGTGCCTTGGAGTTCAACTACTC
 GAGCTGGGGCGGAAGAAAACCAGGTTTTGCATGGTGACCCTCTTCTCTCACACGGAAATCCTACCTCA
 CATGGCTGGGCTTCTCTGCTGAAGGTACTCCCTGTTACGTGGATTCCGAAGGCTGTGTTCGAATGCTAAA
 CAGAGGACTCGGAATACATGGACTCCTGTATGCAACATAAGAGAGCACTGCAAAGGAAAATCTGACCAC
 TACTGGGTGGTTGGTATCCATGAGAATCCCCAGCAGCTAAGGTGCATCCCTTGAAGGTCTCGGTTTC
 CTCCCACCCTTCCAGACCTGCTGTAGCTATATTATCTTTTAAGCTTCTTACTGTCAGACTTCAACAGA
 GAAAGGCCAAATGGAGGAACAATTTTGGCATTTCGTTCTGTTTCCAACTACCTTGATTACTTGGCTAAA
 AATGGTTATGATTATGAGGAGAGCATTAAAAACCAGGCAGTAAAAGAGCAGCAGGAACTCTTAATGAAAA
 TGCTTGCCTGTCTTGTAACTGGAACGAGAATCCGCTGTGTGGAACCTGCTGATCTAATGACTCAAAA
 TGCCGTGCATTTAGCCATTAATATGCTTCTCGCTCTCGGAAATTAATATTGGCTCAGAACTTAGTGAA
 CTTGCTGCAGAAAAGGCAGCTGAATTGGCAGAAACCCAGTCAGAAGAAGAGAAAGAGGATTTTCAGAG
 AAAAAGTGAATGCTGGTTACAGTCACACCACTACAGAATGGAGTCGCCACGGGTGAGAAGTCAAGTTGA
 AGATGCTGAGGACAGAGAGGACTGTTTCTGAAGAGAAAACCAGAGTCACATAACCATGGCAGAACTTA
 TTCCAAAGTGCCAATTCCTCTGATACACCAGCTCTTAAATCAGGTGCAGTTTTCTCGAGCAGCCAAGGAT
 GGGTAAACCCCTTCAAGGTAGTAGTCAGTTCCAAAGAGCCAGCCGTATCAGCGAATTCAACACGCTCAGC
 TAACATTTTAGACAGCATGAACAAATCATCCAGGAAGTCCACTTCTTAAATCGAATGGAAAAAATGAA
 AAATCTCCAGTTATAAGCCTCTCACTCCCAAGCCAAGGTCTAAGCAGGCATCTGCAGCATCCTATTTCC
 AGAAAAGAACTCCACAGGCTGATAAGACTGAGGAAGTAAAAGAAAATCCTAAAAGCTCGTCTCTGATGC
 TCCAGCCGTGTGCCTTCAAACCTCGGAAAACCAAAGGCAAGACTGGGTTCCAGATGTGGCTGGAAGAA
 AATAGAAGTCAAATTTTGTCCGACAACCTGACATTTTCAGATGAAACAGACATAATAAAAGAGGGGATGA
 TACGATTTAGAGTATTGTCCGCTGAAGAAAGGAAGGCATGGACTAACAAAGCCAAGGGAGAACTGCCAG
 CGATGGAGCTGAAGCAAAGAAGCGAAAGCGTGTGGTCAGCGAGATCTGTGAGACAGAGAACCAGGAAGAA
 ACAGTGAAGGAGAATCTAGATCTTTCTAAAAGCAAAGGCGTTAAATCTTCTGCTAACCCAGAAATTGT
 CAGCGTTTGCATTTAAGCAGGAG

ACGCGTACGCGGCCGCTCGAG - GFP Tag - GTTTAA

Protein Sequence:

>MG211602 representing NM_172598
 Red=Cloning site Green=Tags(s)

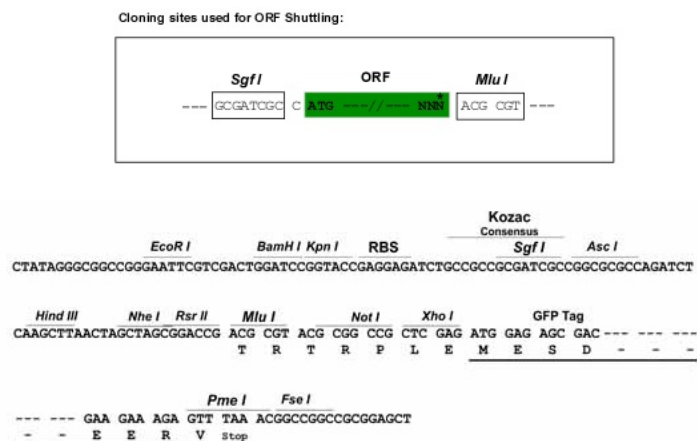
MPATQKPMRYGHTEGHTEVCFDDSGSYIVTCGSDGDVRMWE DLDDDDPKSVNVGEKAFSCALKNGKLVTA
 VSNNTVQVYTFPEGVPD GILTRFTTNANHVVFNGAGNKIAAGSSDFLVKVVVDVMDNSQQQTRFRGHDAPVL
 SLSFDPKDIFLASASCDGTVRVWNI SDQTCVSWPVLQKSN DVVNAKSICRLAWQPKAGKLLAVPVEKSV
 KLYRRETWSNPF DLSDSSISQTLNIVTWSPCGQYLAAGAINGLIVVWVETKDCMERVKHEKGYAICGLA
 WHPTCSRICYTDVEGNLGVLENVCDLSGKVSSNKGI INEDDDNDIMLAADHDLGDDENSVDVTMLKADL
 SHKEEGDDQARS IHNLPLIRPQRPFYDGPMPTRQKPFQSSSTPLHLSHRFMVWNSVGI IRCYNDQDS
 AIDVEFHDTSIHHATHLLNAFN YTMGTL SHEAILLACESADELASKLHCLHFSSWDSKKEWMDMPQNE D
 IEAICLGLGWAAAATTALLLRLFTIGGVQKEVFC LPGPVVSMAGHGEQLCIVYHRGTGFDGDQCLGVQLL
 ELGRKKNQVLHGDPLPLTRKSYL TWLGFSAEGTPCYVDSEGCVRMLNRGLGNTWTPVCNIREHCKGKSDH
 YWVVGIHENPQQLRCIPCKGSRFPPTLPRPAVAIL SFKLPYCQTSTEKGQMEEQFWSVLFHNYLDYLA K
 NGYDYEESIKNQAVKEQQELLMKMLALSCKLEREFRCVELADLMTQNAVHLAIKYASRSRKLILAQKLS E
 LAAEKAELAETQSEEEKEEDFREKLNAGYSHTTTEWSRPRVRSQVEDAEDREDTVSEEKPESHNHGQNL
 FQSANSSDTPALKSGAVFSSSQGWVNPFKVVVSSKEPAVSANSTRSANILDSMNKSSRKSTSLNRMENNE
 KSPVIKPLTPKPRSKQASAASYFQKRTPQADKTEEVKENPKSSSSDAPAVCLQNSENQRPKTFGFQMWLEE
 NRSQILSDNPDISDETDI IKEGMIRFRVLSAEERKAWTNKAKGETASDGAEAKKRKRVSVEICETENQEE
 TVKENLDLSKKQKALNLPANQKLSAFAFKQE

TRTRPLE - GFP Tag - V

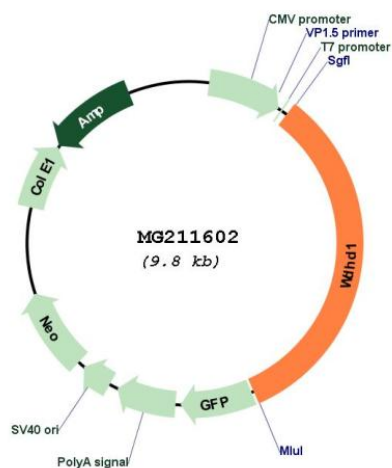
Restriction Sites:

Sgfi-MluI

Cloning Scheme:



Plasmid Map:



ACCN: NM_172598

ORF Size: 3243 bp

OTI Disclaimer: The molecular sequence of this clone aligns with the gene accession number as a point of reference only. However, individual transcript sequences of the same gene can differ through naturally occurring variations (e.g. polymorphisms), each with its own valid existence. This clone is substantially in agreement with the reference, but a complete review of all prevailing variants is recommended prior to use. [More info](#)

OTI Annotation: This clone was engineered to express the complete ORF with an expression tag. Expression varies depending on the nature of the gene.

Components:	The ORF clone is ion-exchange column purified and shipped in a 2D barcoded Matrix tube containing 10ug of transfection-ready, dried plasmid DNA (reconstitute with 100 ul of water).
Reconstitution Method:	<ol style="list-style-type: none">1. Centrifuge at 5,000xg for 5min.2. Carefully open the tube and add 100ul of sterile water to dissolve the DNA.3. Close the tube and incubate for 10 minutes at room temperature.4. Briefly vortex the tube and then do a quick spin (less than 5000xg) to concentrate the liquid at the bottom.5. Store the suspended plasmid at -20°C. The DNA is stable for at least one year from date of shipping when stored at -20°C.
RefSeq:	<u>NM_172598.3</u> , <u>NP_766186.2</u>
RefSeq Size:	4190 bp
RefSeq ORF:	3246 bp
Locus ID:	218973
UniProt ID:	<u>P59328</u>
Cytogenetics:	14 C1
Gene Summary:	Acts as a replication initiation factor that brings together the MCM2-7 helicase and the DNA polymerase alpha/primase complex in order to initiate DNA replication.[UniProtKB/Swiss-Prot Function]