

## Product datasheet for **MG211586**

### Zmiz1 (NM\_183208) Mouse Tagged ORF Clone

#### Product data:

Product Type:	Expression Plasmids
Product Name:	Zmiz1 (NM_183208) Mouse Tagged ORF Clone
Tag:	TurboGFP
Symbol:	Zmiz1
Synonyms:	BC065120; E330020C23; ENSMUSG00000072684; Gm10397; I920194n01; Rai17; Zimp10
Mammalian Cell Selection:	Neomycin
Vector:	pCMV6-AC-GFP (PS100010)
E. coli Selection:	Ampicillin (100 ug/mL)
ORF Nucleotide Sequence:	>MG211586 representing NM_183208 Red=Cloning site Blue=ORF Green=Tags(s)

TTTTGTAATACGACTCACTATAGGGCGGCCGGAATTCGTCGACTGGATCCGGTACCGAGGAGATCTGCC  
GCC**CGATCGCC**

ATGAATTCATGGACAGGCACATCCAGCAGACCAATGACCGTCTGCAGTGCATCAAGCAGCACTTACAGA  
ACCCCGCCAACTCCACAATGCTGCTACAGAGCTGCTGGATTGGTGTGGAGACCCTCGAGCCTTCCAGAG  
GCCCTTTGAGCAGAGCCTCATGGCTGCCTGACGGTTGTCAGCCGTGTGGCTGCCAACAAGGGTTTGAC  
CTGGACCTGGGCTACAGACTCTGGCTGTGTGCGCCGCAATCGAGACAAGTTCACCCCAAGTCTGCTG  
CCCTGCTGCTCCTGGTGTGAAGAACTTGCCCGCTGCTGCTGCTGCGACATCAGAAGAGCCGCCAGAA  
CGACCCCTGGGAACTGCCATGCAGCCCCCTCAGCTCCATGAGCTCCATGAAACCCACTCTGTGCG  
CACAGTGTGGTCAATTCCTTATGACTCTGTCCCTTGGCAGCAGAACACCAATCAGCCTCCCGGCTCCC  
TCTCCGTGGTCAACACGGTGTGGGGAGTGACCAACACATCCCAGAGTCAGGTCTCGGGAACCCATGGC  
CAATGCCAACAACCCATGAATCCAGGTGGCAACCCCATGGCATCAGGCATGAGCACCAGCAACCCCGGC  
ATCAACTCCCACAGTTCGCAGGGCAACAGCAACAGTTCTCCACCAAGCTGGCCCTGCACAGCCCTATA  
TCCAGCCCAACATGTACGGCCGACCTGGCTACCCTGGTAGCGGGGCTTTGGGGCAGTTACCCTGGGGG  
TCCTAGTGCCCCAGCAGGCATGGGCATCCCTCCACATACTCGGCTCCTGCTGACTTACCCAGCCAGCG  
GCCGCTGCTGCAGCAGCTGCAGTAGCAGCCGCTGCCACAGCCACAGCCACAGCCACAGCTACAGTGG  
CAGCCTTGCAAGAGACAGAACAAGGATATAAACAGTATGGACCGGTGTGTTCCCTTTCCAGATGGG  
TCCCACCCAGGCGTATAACAGCCAATTCATGAACCAACCCGGGCTCGGGGGCTGCCTCCATGGGGGGC  
AGCCTGAACCCTGCCGCATGGCAGCTGGCATGACACCCTCGGGCATGAGCGGCCCTCCCATGGGCATGA  
ACCAGCCCGACCCCGGCATCAGCCCTTTGGCACACACGGGCAAAGGATGCCCCAGCAGACCTACCC  
AGGCCCGGCCAGTCCCTTCTATTAGAGCATAAAGAGGCCATACCCGGGAGGCCAACTATGGA  
AACCAGCAATATGGACCAACAGCCAGTCCCCACCCAGCCAGGCCAGTACCCTACCCTAACCCCCAA  
GGCCACTCACATCTCCAACTACCCTGGACAAAGGATGCCGAGCCAAACCCAGCACCAGGACAGTACCACC  
CCCCACAGTCAACATGGGGCAGTATTACAAGCCAGAACAGTTTAAATGGACAGAACAACACCTTCTCTCC



[View online »](#)

```
GGAAGCAGCTACAGCAGCTACAGCCAAGGGAGCGTCAACAGGCCTCCCAGGCCGTTCTGTGGCGAATT
ACCCCCACTCACCTGTTCCAGGGAACCCCACTCCCCCATGACGCCCGGGAGCAGCATACCTCCCTATCT
GTCCCCAGCCAAGATGTCAAACCACCTTTCCACCTGATATCAAGCCAAATATGAGTGTCTGCCACCA
CCCCCAGCCAACCACAATGACGAGCTACGGCTCACATTCCTCGTGGGGATGGCGTGGTTCTGGAGCCCT
TCCGCCTGGAGCACAACCTTGGCGTCAGCAACCACGTGTCCACCTGCGGCCACGGTTCATCAGACGCT
GATGTGGAGGTCAGACCTGGAGCTGCAGTTCAGTGTACCACCATGAAGATCGACAGATGAACACCAAC
TGGCCAGCCTCGTTTCAGGTTCAGCTCAACGCCACACCCCTCACGATCGAGCGGGAGACAACAAGACCT
CCCACAAGCCCTGCACCTCAAGCATGTATGCCAGCCTGGCCGGAACACCATCCAGATCACTGTACCCGC
CTGCTGCTGTTCCACCTCTTTGTGCTGCAGCTGGTACACCGCCCTCTGTGCGTCCGTGCTGCAGGGC
CTCCTCAAGAAGCGCCTACTGCCGCTGAGCACTGCATCACGAAAATCAAGCGGAATTTACAGAGTGTGG
CTGCTCCTCGGGCAACACAACCTCTCAATGGGAGGATGGCGTGGAGCAGACCGCCATCAAGGTGTCTCT
GAAGTGCCCATCACATTCGGCGCATACAGCTGCCTGCTCGAGGCCACGATTGCAAGCATGTGCAGTGC
TTTGACCTGGAGTCATACCTCAACTGAATTGTGAGCGAGGGACCTGGAGGTGTCCCGTGTGCAATAAAA
CTGCTCTGCTCGAGGGTCTGGAAGTGGATCAGTACATGTGGGGGATCCTGAACGCCATCCAACACTCCGA
GTTTGAAGAGGTCACCATTGACCCACGTGCAGCTGGCGGCCAGTACCCATCAAGTCAGACCTCCACATC
AAGGATGACCCCGATGGCATCCCCTCAAAGCGGTTCAAACCATGAGCCCAAGCCAGATGATCATGCCCA
ATGTCATGGAGATGATCGCCGCTCTGGCCCTGGCCCGTCTCCCTACCCCTCCCACCTCCTCTGGGGG
CACCAGCTCCAACGACTACAGCAGCCAAGGAAACAACCTACCAGGGTATGGCAACTTTGACTTCCCCCAT
GGGAATCCCGGAGGGACATCCATGAACGACTTCATGCACGGTCCCCCGAGCTCTCGCACCACCCGACA
TGCCCAACAACATGGCCGCCCTCGAAGAACCCCTCAGTACCCCATGCAGGAAATATGCCCCACGCTGG
CAGTTCTGACAGCCCCATCCCTCCATAACAACAAGTTTGACGTACCACACCCAGCAGCCAGGCGAGG
CCTCCATTACATCACAGTGGGGCTCCTCCTCCTCCCAGCCTCCCGGCAGCCACCACAGGCCGCTCCCG
GCAACCATCCACACAGCAGCTGACCTTAACCCCTCCTCAGCCTTAGAGGGTCAGGCCGAGACACAGGG
AGCATCCGACATGCCGGAACCTTCACTGGATCTACTGCCGGAACCTACAACCCGGATGAGCTTCTTTCC
TACCTGGACCCCCCGACCTTCAAGCAATAGCAACGATGACCTCCTGTCTCTTTGAGAAAC
```

**ACGCGT**ACGCGGCCGCTCGAG - GFP Tag - GTTTAA

**Protein Sequence:**

>MG211586 representing NM\_183208

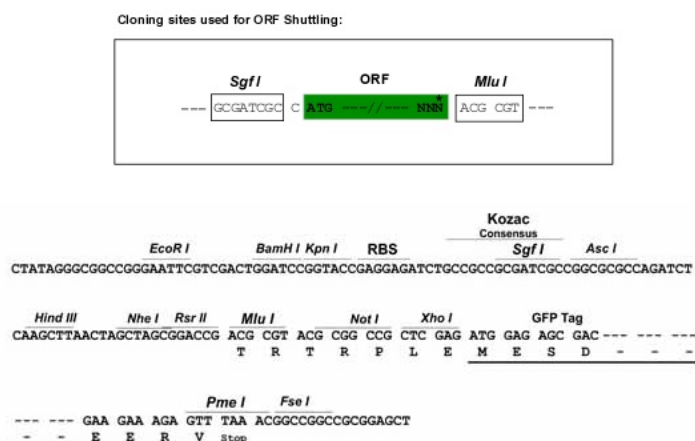
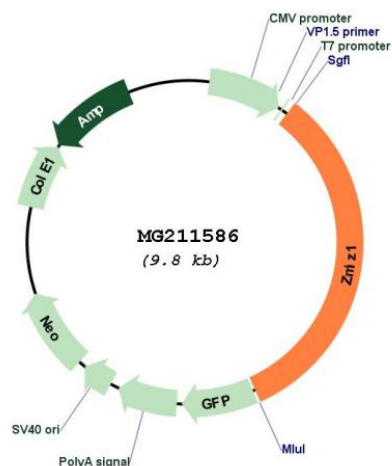
Red=Cloning site Green=Tags(s)

```
MNSMDRHIQQTNDRLQCICKHLQNPANFHNAATELLDWCWDPRAFQRPFEQSLMGCLTVVSRVAAQQGFD
LDLGYRLLAVCAANRDKFTPKSAALLSSWCEELGRLLLLRHQKSRQNDPPGKLPMPPLSSSSMKPTLS
HSDGSFPYDQVWQNTNQPPGSLSVVTTVWGVNTSQQSGLGNPMANANNPMNPGGNPMASGMSTSNPG
INSPQFAGQQQFSTKAGPAQPIQPNMYGRPGYPSGGFGASYPGGPSAPAGMGIPPHTRPPADFTQPA
AAAAAAVAAAAATATATATVAALQETQNKDINQYGPVCSFQMGPTQAYNSQFMNQPGPRGPASMG
SLNPAGMAAGMTPSGMSGPPMGMNQPRPPGISPFGTHGQRMPPQTYGPRPQSLPIQSIKRPYPGEPNYG
NQYQGNPNSQFPTQPGQYPTPNPPRPLTSPNYQGRMPSQPSTGQYPPPTVNMGQYKPEQFNGQNTFSS
GSSYSSYSQGSVNRPPRPVANYPHSPVGNPTPPMTGSSIPPYLSPSQDVKPPFPDIPKPNMSALPP
PPANHNDELRLTFPVRDGVVLEPFRLHNLAVSNHVFHLRPTVHQTLMWRSLELQFKCYHHEDRQMN
WPASVQVSVNATPLTIERGDNKTSKPLHLKHVCQPRNTIQITVTACCCSHLFLVLQVHRPSVRSVLQ
LLKRLPAEHCITKIKRNFSSVAASSGNTLNGEDGVEQTAIKVSLKCPITFRRIQLPARGHDKHVQC
FDLESYLQNCERGTWRCPVCNKTALLEGLEVDQYMWGILNAIQHSEFEEVTIDPTCSWRPVPIKSDLHI
KDDPDGIPSKRFKTMSPSQMIMPVNMEDIAALGPGSPYPLPPPPGGTSSNDYSSQGNNYQGHGNDFFPH
GNPGGTSMNDFMHGPPQLSHPPDMPNMAALEKPLSHPMQETMPHAGSSDQPHPSIQQLHVPHPSQAG
PPLHHSAGPPSQPPRPPQAAPGNHPSDLTFNPSALEGQAGAQAQASDMPEPSLDLPELTPNDEL
YLDPPDLPSNSNDDL LSLFENN
```

**TRTRPLE** - GFP Tag - V

**Restriction Sites:**

Sgfl-MluI

**Cloning Scheme:**

**Plasmid Map:**


**ACCN:** NM\_183208

**ORF Size:** 3216 bp

**OTI Disclaimer:** The molecular sequence of this clone aligns with the gene accession number as a point of reference only. However, individual transcript sequences of the same gene can differ through naturally occurring variations (e.g. polymorphisms), each with its own valid existence. This clone is substantially in agreement with the reference, but a complete review of all prevailing variants is recommended prior to use. [More info](#)

**OTI Annotation:** This clone was engineered to express the complete ORF with an expression tag. Expression varies depending on the nature of the gene.

<b>Components:</b>	The ORF clone is ion-exchange column purified and shipped in a 2D barcoded Matrix tube containing 10ug of transfection-ready, dried plasmid DNA (reconstitute with 100 ul of water).
<b>Reconstitution Method:</b>	<ol style="list-style-type: none"><li>1. Centrifuge at 5,000xg for 5min.</li><li>2. Carefully open the tube and add 100ul of sterile water to dissolve the DNA.</li><li>3. Close the tube and incubate for 10 minutes at room temperature.</li><li>4. Briefly vortex the tube and then do a quick spin (less than 5000xg) to concentrate the liquid at the bottom.</li><li>5. Store the suspended plasmid at -20°C. The DNA is stable for at least one year from date of shipping when stored at -20°C.</li></ol>
<b>RefSeq:</b>	<u><a href="#">NM_183208.4</a></u> , <u><a href="#">NP_899031.2</a></u>
<b>RefSeq Size:</b>	7526 bp
<b>RefSeq ORF:</b>	3219 bp
<b>Locus ID:</b>	328365
<b>UniProt ID:</b>	<u><a href="#">Q6P1E1</a></u>
<b>Cytogenetics:</b>	14 A3
<b>Gene Summary:</b>	Acts as transcriptional coactivator. Increases ligand-dependent transcriptional activity of AR and promotes AR sumoylation. The stimulation of AR activity is dependent upon sumoylation (By similarity). Involved in transcriptional activation of a subset of NOTCH1 target genes including MYC. Involved in thymocyte and T cell development (PubMed:26522984). [UniProtKB/Swiss-Prot Function]