

Product datasheet for **MG211584**

Xpo1 (NM_001035226) Mouse Tagged ORF Clone

Product data:

Product Type:	Expression Plasmids
Product Name:	Xpo1 (NM_001035226) Mouse Tagged ORF Clone
Tag:	TurboGFP
Symbol:	Xpo1
Synonyms:	AA420417; Crm1; Exp1
Mammalian Cell Selection:	Neomycin
Vector:	pCMV6-AC-GFP (PS100010)
E. coli Selection:	Ampicillin (100 ug/mL)
ORF Nucleotide Sequence:	>MG211584 representing NM_001035226 Red=Cloning site Blue=ORF Green=Tags(s)

TTTTGTAATACGACTCACTATAGGGCGGCCGGAATTCGTCGACTGGATCCGGTACCGAGGAGATCTGCC
GCC**CGATCGCC**

ATGCCAGCAATTATGACAATGTTAGCAGACCATGCAGCTCGTCAGCTGCTTGATTCAGCCAAAACTGG
ATATCAACCTTTAGACAACGTGGTGAATTGCTTATACCATGGAGAAGGAGCCCAGCAAAGAATGGCTCA
AGAAGTACTGACACATTTAAAGGAGCATCTGATGCTTGGACACGGGTCGACACAATATTGGAGTTTTCG
CAGAACATGAACACGAAATACTATGGACTACAGATTTTGGAAAAATGTGATCAAAACAAGGTGAAGATCC
TTCCAAGGAACCAAGTGTGAAGGAATAAAAAATATGTTGTTGGTCTCATTATCAAGACATCTCTGACCC
AACTTGTGTAGAGAAAAGAAAAGGTGATATTGGGAAATTGAATATGATTCTTGTTCAGATACTTAAGCAA
GAGTGGCCTAAGCATTGGCCAACTTTTATCAGTGACATTGTTGGAGCGAGTAGGACCAGTGAAAGTCTAT
GTCAAAAATAATGTTGATTCTTAAACTCTTGAGTGAAGAAGTGTGTTGATTTCTCTAGTGGACAGATAAC
CCAAGTTAAAGCAAAGCATTAAAGACAGCATGTGCAATGAGTTTTACAAAATATTTACGCTTTGTTCAG
TTTGTGATGAAAATCCCAAAATGCTCCCTTGTTCATGCTACATTAGAAAACACTGCTGAGATTTCTGA
ACTGGATCCACTGGGATACATCTTTGAGACCAAGTAAATCAGCACATTAATTTACAAGTTCCTGAATGT
TCCAATGTTCCGAAATGTGTCTCTAAAGTGCCTCACTGAGATTGCTGGTGTGAGTGAAGCCAATATGAG
GAACAATTTGAAACTCTGTTTACACTTACAATGATGCAGCTAAAACAGATGCTTCTTTAAACACTAATA
TCCGACTTGCATACTCGAATGGGAAAGATGATGAACAGAACCTTATTCAAATCTCAGCCTGTTTCTCTG
TACCTTTCTAAAAGAGCACGGTCAACTTCTAGAAAAACGACTGAATCTCAGGGAAGCACTCATGGAGGCT
CTTCATTATATGTTGTTGGTGTCTGAAGTGAAGAAAAGTAAAATTTTAAAATCTGCCTTGAGTACTGGA
ATCATTGGCAGCTGAGCTCTACAGAGAGAGTCCATTTTCTACATCTGCTTCTCCCTTGTATCTGGAAG
TCAACACTTTGATATTCCTCCTAGGAGACAGCTGACTTGACCGTGTATCAAAGGTCGGTTTATTGATG
GTTAGTCGCATGGCTAAACCAGAGGAGGACTGGTTGTAGAAAATGATCAGGGAGAAGTTGAAGAGAGT
TCATGAAGGATACTGATCCATAAATTTATATAAGAATATGAGAGAAAACATTAGTTTATCTTACTCATCT
GGATTATGTAGTACGGAATAATAATGACTAAGAACTTCAAATCAAGTGAATGGTACAGAATGGTCA



TGGAAGAATTTGAATACGTTGTGTTGGGCAATAGGCTCCATCAGTGGCGCAATGCATGAAGAGGATGAGA
 AGCGGTTTCTTGTACTGTTATAAAGGATCTTTTAGGATTATGTGAGCAGAAAAGAGGCCAAAGATAATAA
 AGCTATTATTGCATCGAATATCATGTACATAGTAGGTCATACCCAAGATTTTTGAGAGCACACTGGAAA
 TTTTGAAGACAGTAGTAAACAAGCTATTCGAATTCATGCATGAGACCCATGATGGAGTCCAGGATATGG
 CTTGTGACACATTTATTTAAATAGCTCAAAAATGCCGTAGGCATTTTGTTCAGGTTCAAGTTGGAGAAGT
 AATGCCGTTTCATTGATGAGATTTTAAACAACATAAATACTATAATTTGTGATCTTCAGCCTCAGCAGGTT
 CATACTTTTATGAAGCTGTGGGTACATGATTTGGTGCACAGACAGACCAGACAGTTCAAGAGCATTGGA
 TAGAAAAATACATGCTACTCCCTAATCAAGTGTGGGACAGTATAATTGAGCAGGCTACCAAAAATGTGGA
 TATCCTGAAAGATCCTGAAACAGTCAAGCAGCTGGGTAGCATATTTAAAAACAATGTGAGAGCCTGCAAA
 GCTGTTGGTCATCCCTTTGTAATTCAGCTTGGCAGAATTTATTTAGACATGCTTAATGTATATAAGTGCC
 TCAGTGAAAAATTTCTGCAGCTATTCAAGCTAATGGTGAGATGGTTACAAAGCAACCATTGATTAGAAG
 TATGCGGACAGTAAAAAGGGAACTTTAAAGTTAATATCTGGTTGGGTGAGCCGTTCCAATGATCCTCAG
 ATGGTAGTGAAAACCTTTGTTCCCTTTGTTGGATGCAGTTCATTATTGATTACCAGAGAAATGTACCAG
 CTGCTAGAGAACCAGAAGTGCTTAGTACTATGGCCATTATTGCAACAAATTAGGTGGACATATAACAGC
 TGAATACCTCAAATATTCGATGCAGTTTTTGTGAGTGCACATTGAATATGATAAATAAGGATTTTGAAGAG
 TATCCAGAACACAGAACAACTTTTTCTTATTACTTCAAGCTGTCAATTCCTACTGTTTCCAGCATTCC
 TAGCTATTCCACCTGCACAGTTCAGCTGGTTTTGGATTCTATTTTGGGCTTTTAAACATACTATGAG
 GAATGTTGCAGATACAGGCTTACAGATACTTTTTACACTTTTACAAAATGTTGCACAAGAGGAAGCTGCC
 GCACAGAGTTTTTATCAAACCTATTTTTGTGATATTCTTCAGCATATTTCTCTGTTGTAACAGACACTT
 CACATACTGCAGGTCTAACAATGCATGCATCAATCTTGCATATATGTTTAAATTTGGTTGAAGAAGGAAA
 AATAAGTACACCACTAAATCCTGGAATCCAGTTAACAACCAATGTTTATTCAAGACTATGTGGCTAAT
 CTCCTTAAATCTGCATTCCTCATCTACAAGTCTCAAGTAAAGCTCTTTGTAACAGGACTTTTCAGCT
 TAAATCAGGATATCTCTGCTTTTCAAAGAACACCTAAGGGATTTCTTAGTTCAAATAAAGGAGTTTGCAGG
 TGAAGATACATCGGATCTATTTTTGGAAGAAAGAGAAACAGCCCTTCGACAGGCTCAGGAGGATAACAT
 AAACCTCAAATGTCTGTACCTGGGATTCTAATCCACACGAAATTCAGAGAAATGTGTGAT

ACGCGTACGCGGCCGCTCGAG - GFP Tag - GTTTAA

Protein Sequence:

>MG211584 representing NM_001035226

Red=Cloning site Green=Tags(s)

MPAIMTMLADHAARQLLDFSQKLDINLLDNVNVNCLYHGEQAQRMAQEVLTHLKEHPDAWTRVDTILEFS
 QNMNTKYVGLQILENVIKTRWKILPRNQCEGIKYYVVGIIKTSDDPTCVEKEKVIYIGKLNMIQILKQ
 EWPKHWPFTISDIVGASRTSESLCQNNMVLKLLSEEVDFSSGQITQVKAKHLKDSMCNEFSQIFQLCQ
 FVMENSQNAPLVHATLETLLRFLNWIPLGYIFETKLITLIYKFLNVPFMRNVSLKCLTEIAGVSVSQYE
 EQFETLFTLMMQLKQMLPLNTNIRLAYSNGKDDEQNF IQNLSLFLCTFLKEHGQLEKRLNLRALMEA
 LHMYLLVSEVEETEIFKICLEYWNHLAELYRESPFSTASPLLSGSQHFDIPRRQLYLTVLSKVRLLM
 VSRMAKPEEVLVVENDQGEVVREFMKDTSINLYKNMRETLVYLTHLDYVDTEIIMTKKLQNVNGTEWS
 WKNLNTLCWAIGSISGAMHEEDEKRFLVTVIKDLLGLCEQKRGKDNKAIIASNIMYIVGQYPRFLRAHWK
 FLKTVVVKLFEFMHETHDGVQDMACDTFIKIAQKRRHFVQVQVGEVMPFIDEILNNINTIICDLQPQV
 HTFYEAVGYMIGAQTQDQTVQEHLEIKYMLLPNQVWDSIIQQATKNVDILKDPETVKQLGSIKLTNVRACK
 AVGHFPVIQLGRIYLDMLNVYKCLSENIISAAIQANGEMVTKQPLIRSMRTVKRETLKLISGWVSRSDNPQ
 MVAENFVPLLDVAVLIDYQRNVPAAREPEVLSTMAIIVNKLGGHITAEIPQIFDAVFECTLNMINKDFEE
 YPEHRTNFFLLQAVNSHCFFAFLAIPPAQFKLVLDSEIWFKHTMRNVADTGLQILFTLLQNVAQEEAA
 AQSFYQTYFCDILQHIFSVVTDTSHTAGLTMHASILAYMFNLVEEGKISTPLNPGNPVNNQMF IQDYVAN
 LLKSAFPHLQDAQVKLFVTGLFSLNQDIPAFKEHLRDFLVQIKEFAGEDTSDLFLEERETALRQAQEEKH
 KLQMSVPGILNPHEIPEEMCD

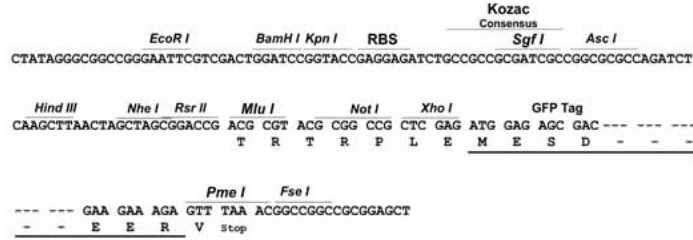
TRTRPLE - GFP Tag - V

Restriction Sites:

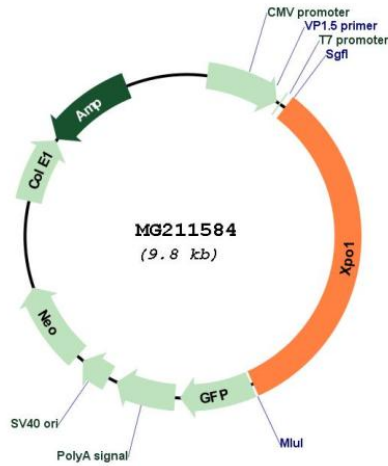
Sgfl-Mlul

Cloning Scheme:

Cloning sites used for ORF Shutting:



Plasmid Map:



ACCN: NM_001035226

ORF Size: 3213 bp

OTI Disclaimer:	<p>Due to the inherent nature of this plasmid, standard methods to replicate additional amounts of DNA in E. coli are highly likely to result in mutations and/or rearrangements. Therefore, OriGene does not guarantee the capability to replicate this plasmid DNA. Additional amounts of DNA can be purchased from OriGene with batch-specific, full-sequence verification at a reduced cost. Please contact our customer care team at custsupport@origene.com or by calling 301.340.3188 option 3 for pricing and delivery.</p> <p>The molecular sequence of this clone aligns with the gene accession number as a point of reference only. However, individual transcript sequences of the same gene can differ through naturally occurring variations (e.g. polymorphisms), each with its own valid existence. This clone is substantially in agreement with the reference, but a complete review of all prevailing variants is recommended prior to use. More info</p>
OTI Annotation:	<p>This clone was engineered to express the complete ORF with an expression tag. Expression varies depending on the nature of the gene.</p>
Components:	<p>The ORF clone is ion-exchange column purified and shipped in a 2D barcoded Matrix tube containing 10ug of transfection-ready, dried plasmid DNA (reconstitute with 100 ul of water).</p>
Reconstitution Method:	<ol style="list-style-type: none"> 1. Centrifuge at 5,000xg for 5min. 2. Carefully open the tube and add 100ul of sterile water to dissolve the DNA. 3. Close the tube and incubate for 10 minutes at room temperature. 4. Briefly vortex the tube and then do a quick spin (less than 5000xg) to concentrate the liquid at the bottom. 5. Store the suspended plasmid at -20°C. The DNA is stable for at least one year from date of shipping when stored at -20°C.
RefSeq:	<p>NM_001035226.1, NP_001030303.1</p>
RefSeq Size:	<p>4906 bp</p>
RefSeq ORF:	<p>3216 bp</p>
Locus ID:	<p>103573</p>
UniProt ID:	<p>Q6P5F9</p>
Cytogenetics:	<p>11 A3.2</p>

Gene Summary:

Mediates the nuclear export of cellular proteins (cargos) bearing a leucine-rich nuclear export signal (NES) and of RNAs. In the nucleus, in association with RANBP3, binds cooperatively to the NES on its target protein and to the GTPase Ran in its active GTP-bound form. Docking of this complex to the nuclear pore complex (NPC) is mediated through binding to nucleoporins. Upon transit of a nuclear export complex into the cytoplasm, disassembling of the complex and hydrolysis of Ran-GTP to Ran-GDP (induced by RANBP1 and RANGAP1, respectively) cause release of the cargo from the export receptor. The directionality of nuclear export is thought to be conferred by an asymmetric distribution of the GTP- and GDP-bound forms of Ran between the cytoplasm and nucleus. Involved in U3 snoRNA transport from Cajal bodies to nucleoli. Binds to late precursor U3 snoRNA bearing a TMG cap (By similarity). [UniProtKB/Swiss-Prot Function]