

## Product datasheet for **MG211579**

### Acad10 (BC027825) Mouse Tagged ORF Clone

#### Product data:

Product Type:	Expression Plasmids
Product Name:	Acad10 (BC027825) Mouse Tagged ORF Clone
Tag:	TurboGFP
Symbol:	Acad10
Synonyms:	2410021P16Rik
Mammalian Cell Selection:	Neomycin
Vector:	pCMV6-AC-GFP (PS100010)
E. coli Selection:	Ampicillin (100 ug/mL)
ORF Nucleotide Sequence:	>MG211579 representing BC027825 Red=Cloning site Blue=ORF Green=Tags(s)

TTTTGTAATACGACTCACTATAGGGCGGCCGGAATTCGTCGACTGGATCCGGTACCGAGGAGATCTGCC  
GCC**CGATCGCC**

ATGTTGGTAAAGAAGACTTTCCAGCCTTCCACTCTGCACTGGGCATGGAGGACCACGGCCCTGAACCATC  
CCCTGGGCAGGCATCAGGGAGGCCTCCGCTGGACACATTCTGGAGGCCGAAGCTACAGAGCAGTCATTTT  
TGACACGGGCGGAGTTCTCGTGCCTTCTCCAGGGACAGTGGCTGTGGGCTGGGAGGTGCAGAATCATGTC  
CCTTCTGGAATATAGTGAAGGCTTTCATCAGAGGTGGCGACAGTGGCCCTGGATAAAGTTTATAAAAG  
GAGAGATAACGACCGAGCACTTCTTGAAGAATTCGGGAGACTGTGCTCTGAAATCGCAAAGACTCCGT  
GCCCGTGAGCTCCTATTTCTCTCTGCTGACCAGTGAGCAGGTGACAAAGCAGTCCCGGTGATGACTCAG  
GCCATCTCTCAGATCAGAGCAAAAAGGCCTCCAGACTGCAGTCTCACCACAACTTTTCATCTTTCCAGCG  
GGGAAAGCTTCTGCCCTGGACCGGAAACAGTTTGATGTGGTGGTTGAGTCTGCTGCGTGGAGGCATCTG  
TAAGCCAGATCCCAGGATATCCAGCTGTGCTGCAGAGGCTGAGCCTGCAGCCCTCAGAGGCTATTTTT  
CTTGATGATCTGGGATCCAATCTAAAAGTGGCTGCCAGCCTGGGCATTACACCATCAAGTTGACAGGC  
CCGAGACAGCAGTGAAGGAGCTGGAGGCTCTACTGGGTTTCCACTGCACTTGGGCGTCCCAACACCCG  
GCCTGTGAGGAAGACCATGGCGATTCCACAAGATGCCTTGGAGAAGTACCTGAAGGGCTTGCTGGGGACC  
CACTCCACCGGCCCATGGAGCTCCTTCAGTTTGATCATGGACAGTCAAACCAACGTAACATACATCAGGC  
TGGCTGACCGTCAGTGGTCTGAGGAAGAAACCCTCGGGGACCCTCCTCCCTCTGCCATGCCATAGA  
AAGGGAATTCAGGATCATGAAAGCCCTTCAAATGCAGGAGTCCCTGTCCCTACTGTTCTTGACCTCTGT  
GAAGACTCAAGCATCATCGGCACCCCTTCTACTTGATGGAGTACTGCCCGGCATCATCTACAAAGACC  
CCTCCCTGCCCGCTTGGAGCCAGCCGGCGGGAAGCCATATACTGCCATGAACCAAGTCTGTGACG  
AATTCACAGTGTGGACCTGCAGGCCACCAGCCTGGACAGCTTCGGCAAGCAAGGGGACTATATTCCTCGA  
CAGGTGCAAACCTGGACCAAGCAGTACCGAGCAGCAGAAACCAGCAGCATCCAGCAATGGAGAGGCTTA  
TCCAGTGGCTGCCACTGCACCTCCAGGCAACAGAGAACCACGCTGGTGCATGGTGACTTCAGGCTGGA  
CAACCTGATATTCATCCTGAAAAGCGGAAGTCTCGTGTCCCTGGACTGGAACTTTCCACCTTAGGA



[View online »](#)

GACCCCTTTGCTGATGTGGCCTACAGCTGCCTGGCCTACTACCTGCCATCCAGCTTTCCATTCTGAGAG  
 GGTTTCAGAGACCAGGATGTGACAAAGCTGGGCATCCCCACTGTGGAGGAATACTTCAGGATGACTGTCT  
 TAACATGGGCATCCCACCATCGACAACCTGGAACCTTACATGGCTTTCTCCTTTTTCCGGGTGGCTGCA  
 ATCCTACAGGGAGTCTACAAGCGGTCACTCACAGGCCAGGCAAGCTCAGCAACAGCCCAACAAAGTGAA  
 AGCTCACTGAGTCCATGGCTGAGCTGGCCTGGGATTTTCCACCAAGAAGGGTTCGGGTTTTCAAAGA  
 GATGCCAGCCACAAAACACTGAGCAGATCCTACCATGCCTGGGCGGACCGAGGTCCTCCGAGGACTCCC  
 AAGGGTGTGAGGGGTACAGCACTGTAGCAGCTGCTTCCCCTTCTCACAGGCCAAAGGGAGGCCTGGTCA  
 TCTCTCCAGAGGGCTGTCTCCTGCGGTGAGAAAGTTGTATGAGCAGCTGGTGCAGTTTATAGAACAGAA  
 GGTGTACCCCTGGAGCCAGAGCTGCAGAGACACCAGGCCTCGGCCGACAGGTGGAGCCCTTCCCGCTG  
 ATAGAAGACCTCAAGGAGAAAGCCAAGGCTGAGGGACTTTGGAACCTTTTCTACCCTTGGAGACTGATC  
 CTGAGAAAAAGTACGGAGCAGGGCTGACTAACGTGGAATATGCACATCTGTGTGAAGTATGGGCATGTC  
 TCTGTATGCTTCTGAGATATTTAATTGCTCTGCCCGGATACGGGGAATATGGAGATCCTGGTGCAGTAT  
 GGCCTGAGGAGCAGAAGGCCCGCTGGTGGTCCACTGTTGGAGGCAGGATCCGTTCTTGTCTTGCCA  
 TGACTGAGCCTCAGTGGCTCCTCAGATGCCTAACATCGAGGCTTCCATCAAAGAGGAAGATGGCTG  
 CTATGTCATAAATGGTCAACAAGTGGTGGACCTCAGGCATCCTGGATCCTCGATGCAAACCTGTGTGTTT  
 ATGGGGAAAACAGACCCACAGGCCCAAGGCACCAAGCAACAATCTATGCTTGGTTCCCATGGACTCGC  
 CAGGAATCACAGTCATCCGGCCTCTGTCAGTGTGGTGGTGGAGGATCCTCCAGGTGGCCACGGTGAAGT  
 ACGGTTCAAGGACGTGCGTGTGCCAAGGAAAACATACTCCTGGGCCCTGGCCGAGGCTTTGAGATCGCT  
 CAGGGCAGGCTGGGGCTGGCCGATTCACTGCATGAGGTTGATTGGGTATTCAGAGAGGGCCCTGG  
 CACTCATGAAGACACGGGTGATGTCCCGCACGGCTTCGGGAAGCCCTTGTGGAGCAGGGCACCATCCT  
 GGCAGACATTGCCGGTACGTGTGGAGATCGAGCAGGCCGGCTGCTGGTGTGAAAGCTGCTCACCTC  
 ATGGATGTGGCCGAAAATAGACTGCAGCTTATAGCCTTTGAGCAGCGGGCCTCAGCAGTACTACCCCTGGC  
 CCTATCACGTAATTGACCGCGCTATTCAGGCCTTTGAGCAGCGGGCCTCAGCAGTACTACCCCTGGC  
 TCAGTTCTTTGGCTGGGCCGAGCCCTGCGCTTCTGCTGATGGCCCTGATGAAGTACACAGCTGACAGTG  
 GCTAAGATGGAAGTGAAGAATCAGTCCAGGATGCAGGAACCAGCAGTGGCCAGAGTG

ACGCGTACGCGGCCGCTCGAG - GFP Tag - GTTTAA

**Protein Sequence:**

>MG211579 representing BC027825

Red=Cloning site Green=Tags(s)

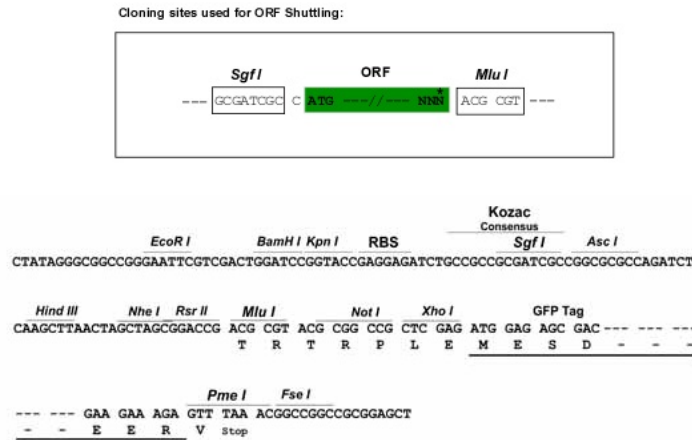
MLVRRFLFQSTLHWAWRTTALNHPLGRHQGLRWTHSGGRSYRAVIFDGTGGVLPSPGTVAVGWVQNHV  
 PSGTIVKAFIRGGDSGPWIRFIKGEITTEHFLEEFGRLCSEIAKTSVPVSSYFSLTSEQVTKQFPVMTQ  
 AISQIRAKGLQTAFLTNNFHLSSGESFLPLDRKQFDVVVESCLEGIKCPDPRIFQLCLQRLSLQPSAIF  
 LDDLGSNLKVAASLGIHTIKVDRPETAVKELEALLGFPLHLGVPNTRPVRKTMaipQDALEKYLKLLGT  
 HSTGPMELLQFDHGQSNPTYYIRLADRQLVLRKKPSGTLPSAHAIEREFRIMKALANAGVPVPTVLDLC  
 EDSSIIGTPFYLMYCPGIIYKDPSPGLEPSRREAIYAMNQVLCRIHSVDLQATSLDSFGKQGDYIPR  
 QVQWTWKQYRAAETSSIPAMERLIQWLPLHLPRQRTTLVHGDFRLDNLIFHPEKAEVLAVLDWELSTLG  
 DPFADVAYSCLAYLPSFPILRGFRDQDVTKLGIPTVEEYFRMYCLNMGIPPIDNWNFYMAFSFRVAA  
 ILQGVYKRSLTGQASSATAQQSGKLTESMAELAWDFATKEGFRVFKEMPATKTLRSRSHAWAGPRSPRTP  
 KGVRGHSTVAAAAPSHEAKGLVISPEGLSPA VRKLYEQLVQFIEQKVYPLEPELQRHQASADRWSPSPL  
 IEDLKEKAKAEGLNWFLPLETDPEKKYAGL TNVEYAHLCVEMGMSLYASEIFNCSAPDTGNMELVRY  
 GTEEQKARWLVPLEGRIRSCFAMTEPQVASSDASNIEASIKEEDGCYVINGHKWWTSGILDPRCKLCVF  
 MGKTDQPAPRHQQSMLLVPMDSPGITVIRPLSVFGLDPPGGHGEVRFKDVVRVPKENILLGPGRGFEIA  
 QGRLGPGRIHHCMLRIGYSERALALMKTRVMSRTAFGKPLVEQGTILADIARSRVEIEQARLLVLKAAHL  
 MDVAGNKTAALDIAMIKMVVPSMAYHVIDRAIQAFGAAGLSSDYPLAQFFGWARALRFADGPDEVHQLTV  
 AKMELKNQSRMQEPAVPRV

TRTRPLE - GFP Tag - V

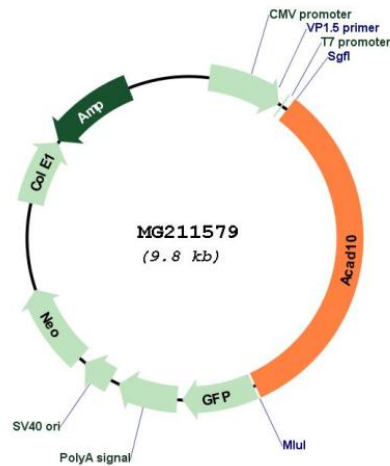
**Restriction Sites:**

Sgfl-MluI

Cloning Scheme:



Plasmid Map:



ACCN: BC027825

ORF Size: 3209 bp

OTI Disclaimer: The molecular sequence of this clone aligns with the gene accession number as a point of reference only. However, individual transcript sequences of the same gene can differ through naturally occurring variations (e.g. polymorphisms), each with its own valid existence. This clone is substantially in agreement with the reference, but a complete review of all prevailing variants is recommended prior to use. [More info](#)

OTI Annotation: This clone was engineered to express the complete ORF with an expression tag. Expression varies depending on the nature of the gene.

<b>Components:</b>	The ORF clone is ion-exchange column purified and shipped in a 2D barcoded Matrix tube containing 10ug of transfection-ready, dried plasmid DNA (reconstitute with 100 ul of water).
<b>Reconstitution Method:</b>	<ol style="list-style-type: none"><li>1. Centrifuge at 5,000xg for 5min.</li><li>2. Carefully open the tube and add 100ul of sterile water to dissolve the DNA.</li><li>3. Close the tube and incubate for 10 minutes at room temperature.</li><li>4. Briefly vortex the tube and then do a quick spin (less than 5000xg) to concentrate the liquid at the bottom.</li><li>5. Store the suspended plasmid at -20°C. The DNA is stable for at least one year from date of shipping when stored at -20°C.</li></ol>
<b>RefSeq:</b>	<u>BC027825, AAH27825</u>
<b>RefSeq Size:</b>	3619 bp
<b>RefSeq ORF:</b>	3209 bp
<b>Locus ID:</b>	71985
<b>Cytogenetics:</b>	5 F
<b>Gene Summary:</b>	Acyl-CoA dehydrogenase only active with R- and S-2-methyl-C15-CoA.[UniProtKB/Swiss-Prot Function]