

Product datasheet for **MG211573**

BC068157 (BC068157) Mouse Tagged ORF Clone

Product data:

Product Type: Expression Plasmids
 Product Name: BC068157 (BC068157) Mouse Tagged ORF Clone
 Tag: TurboGFP
 Symbol: BC068157
 Mammalian Cell Selection: Neomycin
 Vector: pCMV6-AC-GFP (PS100010)
 E. coli Selection: Ampicillin (100 ug/mL)
 ORF Nucleotide Sequence: >MG211573 representing BC068157
 Red=Cloning site Blue=ORF Green=Tags(s)

TTTTGTAATACGACTCACTATAGGGCGGCCGGGAATTCGTCGACTGGATCCGGTACCGAGGAGATCTGCC
 GCC**CGATCGCC**

ATGGACAAGAGGGATAGCGTCAAATCAGGAACTGCCCCGCGAATGCCGTCTTCACGACCCCTGGCCTTC
 TGACCCCTAGGCCTCCTTCTGGGTCCGCTCGACCTCCTCCCCCTGTGACCACTGCTGCCCTTCGAGTCTT
 GGAAGCAAACGGAGCTATGGGGCGAAGGTCCCTGGTGGAGCGAGCCCCAGGCGTCTGCAAAGCCGCTCTT
 CCACAGACCAGCAAAGCCGCTCTCCACAGACCAGCAAAGCCGCTCTCCACAGACCAGCAAAGCCGCTC
 TTCCACAGACCAGCAAAGCCGCTCTCCACAGACCAGCAAAGCCGCTCTCCACAGACCAGCAAAGCCGCTC
 AGGTCTCGTAGCCAGCCAACAGGCCCCAGCTTCTGGGAAAGGAGAGAGGGCCCTATGAAGACCCCT
 GGCCAGGGCTCTATTTCTAGCCCGGGCTGCCAGCAGTGGGATTGCCAGACCAGGCCCTGTTGTCCAGA
 AGAGACTCCAACCTCCGACTAAGGAACCCCTCGGCCAGAGGTAACACCAGAGACGCCAAAAGGAATAC
 TCTGAACCTGGAACACGAAGAGTTTTGTCTGCAGATTCTTAGGGCCACCTCAGGAGCCCTCCCT
 GCCATCACCCGTCGGTCCAGGGCTCCAGCTACAGAGGTGGGACTTCTCAACCAGCTCCAGTGCCAGAC
 AGCGTCTCTGACCACCGAGGCAGCCAGGAAACCTGGGAGCAGTGTCTGAACCCAGTCCACGGAGCT
 GAGCCAGCCTTAGGAGACGCTCTGTTGCTGGTGGCAGCCTGCAAAGCCGGTCTCACGTTCCCTGATC
 CCCAGTGTACTCTCAGCTCTCCCATCCCGCTCCGGGTCTCACCACGTGAACCCACGGGCTCCTG
 CGCATACCTCGCAGCTCAAGTCGAAAGGCAGCAAGCTCTGCACCAACCCAGACCACAGTCCCAAGGAA
 GAACAAGCCCTCTGTACAGAGCCTGATTCTGCTTTCATCTTTAGTCACGCCCACTCCACCTGGTGCTTCC
 TCTGTCCAGGGCCAGATGATCCCTCGCAAACCACTTCTCCCTCTCCTCCACCACTCCGCCTCTTT
 CTCTGCAGAACCTCCCTCTACACCAGCCACACCCCAATTGCTAGCTCCACCCACATCTCTGGATACTGA
 AGAGGCCCTGACTCACCCACCGAGAGCTGTAATCTTTCATCGCCCCCTCCCTTATACAGAATATG
 CCCCTAACCCAGGCTTCTCAGCAACGCTCCCTCAGGAGACTCTCTCGGCCATGCCTTTCTCACCTGCTC
 CTCTATCTAGCCTCGTCTCCTCCACAACCTCCTTCTCCCGCCAATTTCCCGCAGAAATTTGCCAC
 TTCCCTGTGCAGTCTTCTCAGTTGCCTCTCCACTCCTTTCCGGGCCAACTTTTCTGAGTCTCCTCCC
 CTTCCTCCGGCCAGCTCGCTAATCGAACCACCGCTCTTTGCAAGATCCTCTGTTTCTGGCCATTTCTC
 CTCAGTTTCTCGTCTACCTCCATCTCACCACCTCTGCCTACCTCTTCCGTGGTCACGCCTCCTCTGAG



[View online »](#)

GCTCCACTTTCTCAGACTTTGCCACTTCACAGGCCTCTTTGTTGACCTTGCCGCCCTCACTGGCCTCC
 TCACCCAGCGGCCACGCCTCCTCTTTGGCCTTGTCCTCTATCCACCCAACCTCTACTGGCTCGC
 CCTTTTGAGGCCTCTCCTTCTTTCTTGCTACCCCCCTATGCAGCCACGCGCTTACCTCGCCTTC
 TTTGCAGGCACCTCCTGTTACATACCCCTTGCTCTTTCTCACCCCTGCCTACCACCTCTGCCCGCT
 CTTCTCTCCCCTCCTGCCTACCTCCTCTGGAGAGCCCTTTTCTCCCTCAGCCTACCCTCGTCTCCCT
 TAGCAACTCCCCCTCCAGAAGCCCCACCTTCACCTGGGCTCACCCACTTTTACCCTGGCCACGCCACATGT
 TCCGAAAACCCACCTCTGGCTTTTCCCCTCTGCCAGTTCCACCTCTCCCTGGACACAGCCACATGT
 TTTCCACAGGCTCTCTTTGGCTTTGCCTCCTCTACAAACCTCCTCTTCTCCTCTGACAATACCCCTGTC
 CGCAGACTCCACCTTCTCTGGCCTTGCCCTCCCTGCAGTCTCCCTCCTCCCCATTGGCCACAGCCACACC
 CCCCCTACAGATTCCCCTTGTTGTTTTACTACTTTACAGACCCCTCCTTCTCCCCTGACCACTTTCCCT
 CCGGGGTCGCGCTGGCCTGACCTCGCCGTTGTTACGCTCCTTCTCCTCCTGCCTACCACCACTAC
 AAGCCCTCGTCGACCCCAACCCCGGGTCCAGATGTCCTATCACAGGTCACGCTGACCCTGGCGCT
 GGCCCTGCCCGCCCCGCCCTCGGAAGCCGTCAGTACGCTGAGTGGCCCGGACCTGGCAGGT
 CACAGCAGTAGTCCACGACACACCAGAGGAGCTCCGCGCTACGATAGTGGCCCGAGGGCTGCCTA
 CAATCTCCCCGGCCCGGACGCGGACCTAGCTGCCTGCCACCCGCTTCTGGAGTGAAGTTCTGTCC
 ACAGTTAGCAGTACGCAGCACTCCAGGAGTTCCCTGCCATGGCCTCCCCTGCTGGCCAGGTTCTCCT
 GATGGCCTGTGCACCATCTACGAATCTGAAGGACCAGAGTGGTGGCCCCACCCCGGGATCCCTAGATG
 TGGAGCCAGAACCAATGCCTGGCTCTGGCAGTGCAGAGGTGACTGCTGCAGACTGTGCAGGAGCATCCTC
 AAGAAGCCAAAGTCCGCTCGCCTTGGCAGCTGCCCTGGGGCCCTTTCAGGCGAGCGTTGTGCAGCAC
 CTGCTAAGCCGGACACTGCTGCTAGCAGCTGCAGAAGGTGCAGCTGTGGGCTGCGAAGGCAGTTCAGGAG
 GCTCAGGGTGGTGGTGTCTCGGGAGGATCCGGGCTCCGCTTAGCGATGCTGAATTGGCCGCTGGGC
 CGAATTGCTGTCTCCCTTGGACGAGTCTCGTCCAGCATCACTTCGGTACCAGCTTCTCCCAGATGAT
 GTGGCTCCCCACAGGCTGACTGGACTGTGGTGAAGTGGAGACTTTTCAT

ACGCGTACGCGGCCGCTCGAG - GFP Tag - GTTTAA

Protein Sequence:

>MG211573 representing BC068157
 Red=Cloning site Green=Tags(s)

MDKRDSVKSQTAPRMPSSRPPGLLTPRPPSGSARPPPPVTTAALRVLEANGAMGRRSLVERAPGVCKAAL
 PQTSKAALPQTSKAALPQTSKAALPQTSKAALPQTTIHGAPARSAGAGPRSPANRPPASGKGERAPMKTP
 GGQSISSPGRASSGIARPGPVVQKRLQPPTKEPSARGKTPETPKRNTLNSGTRRVL SADSLGPTSGAPSP
 AITRRSRAPATEVGLPQPAPSARQRPLTTEAARKPGSSASEPSATELSPAFRRRSVAGGSLQKPVSRSLI
 PSATPQLSPSRSGVSPRVTPRAPAHTSQLKSKGQALHPTQTTVPRKNKPSVQSLIPASSLVTPPPGAS
 SVQGPDDPSQTTLPPSPPTTPLLQNL PSTPATPPLLAPPTSLDTEEASDPPPRAVISSSPPLIQNM
 PPNQASSATLPQETLSAMPFSPAPLSLASSPQLLPSPI SPQNLPTSLVTSSQLPLSTPFRANFSESP
 LPRATLANRTTSLQDPLFLAISPPVSSSTISIPPLPTSSVVTPLRLPLSQTLPSTQASLLTLPPSLAS
 SPQATPPPLALSPLSTQLSTGSPSLQASPSFLPTPPMQPRALPSPSLQAPPVTYPLPLSSPPASPLPA
 LLSPPASPPLESPLSPSASPSSPLATPPPEAPPSLGSPTLSPLATPPPQTPLAFPLPASTSSLDTATC
 FPQGPLLALPPLQTSPLTIPCPQTPPSLALPSLQSPSSPLATATPPLQIPLVVLPTLQTPPSPLTTFP
 PGVPPGLTSPVVQPPSPASPPLQAPRRPPTPGDPVITGPRLTLALAPAPPPPSRSPSSTLSGPDLAG
 HSSSATSTPEELRGYDSGPEGCPTISPADADLAACHPASWSRSAPQLAVRSTPGVPLPWPTAGPGSS
 DGLCTIYESEGPESVAPTPGSLDVEPEPMPGSGSAKVTAADCAGASSRSPKSARL GELPLGALQASVVQH
 LLSRTLLAAAEGAAGVCEGSSGGSGVGGVSGGSRAPLSDAELGRWAELL SPLDESASITSVTSFSPDD
 VASPQGDWTVVEVETFH

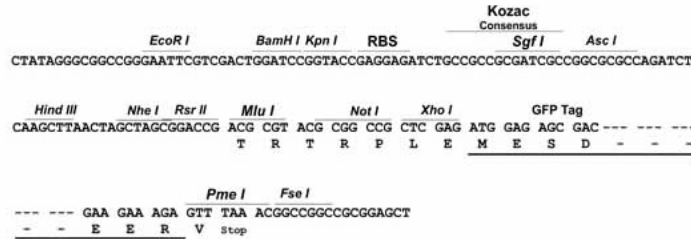
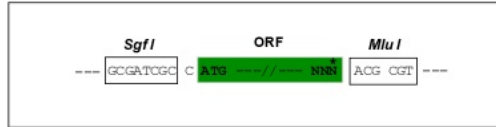
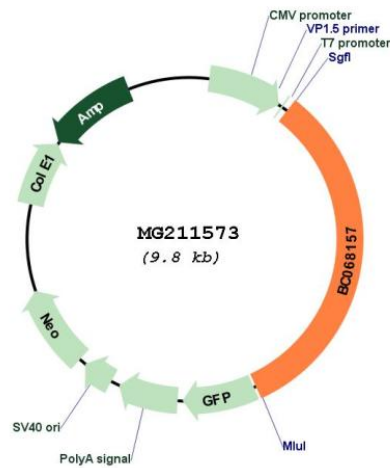
TRTRPLE - GFP Tag - V

Restriction Sites:

Sgfl-MluI

Cloning Scheme:

Cloning sites used for ORF Shutting:


Plasmid Map:

ACCN: BC068157

ORF Size: 3201 bp

OTI Disclaimer: The molecular sequence of this clone aligns with the gene accession number as a point of reference only. However, individual transcript sequences of the same gene can differ through naturally occurring variations (e.g. polymorphisms), each with its own valid existence. This clone is substantially in agreement with the reference, but a complete review of all prevailing variants is recommended prior to use. [More info](#)

OTI Annotation:	This clone was engineered to express the complete ORF with an expression tag. Expression varies depending on the nature of the gene.
Components:	The ORF clone is ion-exchange column purified and shipped in a 2D barcoded Matrix tube containing 10ug of transfection-ready, dried plasmid DNA (reconstitute with 100 ul of water).
Reconstitution Method:	<ol style="list-style-type: none">1. Centrifuge at 5,000xg for 5min.2. Carefully open the tube and add 100ul of sterile water to dissolve the DNA.3. Close the tube and incubate for 10 minutes at room temperature.4. Briefly vortex the tube and then do a quick spin (less than 5000xg) to concentrate the liquid at the bottom.5. Store the suspended plasmid at -20°C. The DNA is stable for at least one year from date of shipping when stored at -20°C.
RefSeq:	<u>BC068157.1</u>
RefSeq Size:	4564 bp
RefSeq ORF:	3203 bp
Locus ID:	73072
Cytogenetics:	8 A1.1