

Product datasheet for **MG211572**

Vcl (NM_009502) Mouse Tagged ORF Clone

Product data:

Product Type:	Expression Plasmids
Product Name:	Vcl (NM_009502) Mouse Tagged ORF Clone
Tag:	TurboGFP
Symbol:	Vcl
Synonyms:	9430097D22; AA571387; AI462105; AW545629
Mammalian Cell Selection:	Neomycin
Vector:	pCMV6-AC-GFP (PS100010)
E. coli Selection:	Ampicillin (100 ug/mL)
ORF Nucleotide Sequence:	>MG211572 representing NM_009502 Red=Cloning site Blue=ORF Green=Tags(s)

TTTTGTAATACGACTCACTATAGGGCGGCCGGAATTCGTCGACTGGATCCGGTACCGAGGAGATCTGCC
GCC**CGATCGCC**

ATGCCGGTGTTCACACGCGTACGATCGAGAGCATCCTGGAGCCGGTGGCGCAGCAGATCTCGCACCTGG
TGATTATGCACGAGGAGGGCGAGGTGGACGGCAAAGCCATTCTGACCTCACCGGCCCGTAGCCGCCGT
GCAGGGCGCCGTAGCAACCTCGTCCGGTTGGAAAAGAGACTGTTGAGCCACTGAGGATCAGATTCTG
AAGAGAGATATGCCACCAGCCTTTATTAAGGTTGAAAATGCTTGACCAAGCTTGTTCAGGCAGCCAGA
TGCTTCAGTCAGACCCATACTCGGTTCCGCGGGGATTACCTCATTGACGGCTCTAGGGGAATCCTTTT
TGGCACATCTGACCTACTGCTTACCTTTGATGAGGCTGAGGTTGCTAAAATTATTAGGGTTTCAAAGGA
ATTTTGAATATCTTACAGTGGCAGAGGTAGTGAAAATATGGAAGACTTGGTCACTTACACAAAGAATC
TTGGGCCAGGAATGACTAAGATGGCCAAAATGATTGATGAGAGACAGCAGGAGTTGACTCACCGAAACA
CCGTGTGATGTTGGTGAACCAATGAACACTGTCAAAGAGCTGCTTCTGTTCTCATTTCAGCTATGAAG
ATTTTTGTTACAACCAAAAACCAAAAACCAAGGAATAGAAGAAGCTTTGAAAATCGAAATTTTACTG
TAGAAAAGATGAGTGCTGAAATTAACGAGATCATTGCGTGTGTTACAACACTTCTCTGGGATGAAGACGC
CTGGGCCAGCAAGGACTGAAGCCATGAAGAGAGCGCTGGCGTCCATAGACTCCAAATGAACAGGCC
AAAGTTGGCTCCGTGACCCCAATGCCTCCCGGGGATGCTGGAGAGCAGGCCATCAGGCAGATCTTAG
ATGAAGCTGGAAGTTGGTGAACCTTTGTGACGGCAAGGAACGACAGGGAGATCCTAGGAACCTGCAAAAT
GCTAGGGCAGATGACTGACCAAGTGCTGACCTCCGAGCCAGAGGACAAGGAGCTTCCCAAGTGGCCATG
CAGAAGGCCAGCAAGTGTCTCAGGGGCTCGACGTGCTTACCGCCAAAGTGGAGAATGCAGCTCGGAAGC
TGAAGCCATGACGAACTCAAAGCAGAGCATTGCAAAGAAGATTGATGCTGCCAGAATTGGCTGGCGGA
TCCAAATGGTGGACCTGAGGGAGAAGAACAGATTGAGGGGCTTTGGCTGAAGCTCGGAAGATTGCAGAA
TTATGTGATGATCCTAAGGAGAGAGATGACATCCTCCGCTCCCTGGAGAGATAGCTGCTGACCTCTA
AACTAGGAGACTTGCAGAGACAGGGGAAAGGAGACTCGCCAGAGGCTCGAGCCTTGCTAAACAAGTGGC
GACGGCACTACAGAACCTGCAGACCAAAACCAACAGGGCCGTGGCCAACAGCAGACTGCCAAAGCAGCT



[View online »](#)

```

GTCCACCTCGAGGGCAAGATTGAACAGGCGCAGCGGTGGATTGATAACCCACAGTAGATGACCGTGGAG
TCGGTCAGGCTGCCATCCGTGGACTTGTGGCTGAGGGGCATCGGCTGGCCAATGTCATGATGGGACCTTA
TCGCCAAGATCTTCTTCCAAATGTGACCGTGTAGACCAGCTAACAGCTCAGCTGGCTGACCTGGCTGCC
CGAGGGGAGGGGAGAGTCTCAGGCGAGAGCAGCTTGCATCCCAGCTTCCAGGACTCCTTAAAGGATCTTA
AAGCCCAGATGCAGGAAGCTATGACTCAAGAGGTATCCGATGTTTTACAGCGATACTACAACCTCTATCAA
GCTGTTGGCAGTAGCCGCCACTGCTCCTCTGATGCACCCAATAGGGAAGAGTATTTGATGAAAGGGCA
GCCAATTTTGAACACATTCAGGAAGGCTTGGAGCCACAGCAGAGAAGGGCGGCTGCTGTTGGTACTGCCA
ATAAATCGACAGTGGAAAGGCATTAGGCATCTGTGAAGACAGCCGAGAAGCTCACTCCCCAGGTCATCTC
CGCTGCTCGGATCTTACTGAGGAACCTGGTAACCAGGCTGCTTATGAACATTTTGAACATTTGAGACCATGAAGAAC
CAGTGGATTGATAATGTTGAAAAATGACAGGGCTGGTGGACGAGGCTATTGATACCAAGTCTCTGTTGG
ATGCTTCTGAAGAAGCAATTAAGAAAGACCTGGACAAGTGAAGGTAGCCATGGCCAATATTGACCTCA
GATGCTGGTCGCTGGAGCAACCAGTATTGCTCGTGGGCCAACCGGATTCTGCTGTTGCTAAGAGGGAG
GTAGAGAACTCTGAGGACCCGAAGTCCGAGAGGCTGTGAAAGCTGCCTCTGATGAAGTGAAGCAAAACAA
TCTCCCCATGGTATGGATGCCAAGGCTGTGGCTGGAACATCTCTGACCTGGCTGCAAAAGAGCTT
CCTGGACTCAGGATATCGGATCTGGGAGCTGTGGCCAAGGTGAGAGAAGCCTTCAACCTCAGGAGCCT
GACTTCCCGCCTCTCCACCAGACCTTGAACAGCTACGACTAAGTATGATGAGCTGGCTCCTCTAAGCCAC
CTCTGCCTGAGGGTGAAGTCCCTCCACCAGGCCCCACCACCAGAAGAGAAGGATGAAGAGTCCCTGA
GCAGAAAGCTGGTGAAGTGAATTAACCAGCAATGATGATGGCCGCCAGGCAGCTCCACGATGAAGCTCGG
AAATGGTCTAGCAAGGGCAATGACATCATTGCAGCAGCCAAGCGCATGGCTCTGCTGATGGCAGAGATGT
CTCGGCTGGTAAGAGGGGGCAGTGGTACCAAGCGGGCAGTATTTCAGTGTGCAAGGATATCGCCAAGGC
CTCTGATGAGGTGACGAGGTTGGCCAAGGAGGTTGCCAAGCAGTGCACAGATAAGCGGATTAAGACCAAT
CTCTTACAGGTATGCGAGCGAATCCCAACTATAAGCACCAGCTCAAAATCTATCCACAGTGAAGGCCA
CTATGCTGGGCCGACCAACATCAGTGTGAGGAGTCTGAGCAGGCCACAGAGATGCTGGTTCATAATGC
CCAGAACCTCATGCAGTCTGTGAAGGAGACTGTGCGAGAGGCTGAAGCTGCTTCAATCAAAATCCGAACA
GATGCTGGCTTACTCTGCGCTGGTGCAGAAAGACTCCCTGTTACCAG
    
```

AGCGGACCGACCGTACGCGGCCGCTCGAG - GFP Tag - GTTTAA

Protein Sequence:

>MG211572 representing NM_009502

Red=Cloning site Green=Tags(s)

```

MPVFHTRTIESILEPVAQQISHLVIMHEEVEVDGKAIPDLTAPVAAVQAAVSNLVRVGKETVQTTEDQIL
KRDMPFAFIKVENACTKLVQAAQMLQSDPYSVPARDYLIDGSRGILSGTSDLLLTFDEAEVRKIIRVCKG
ILEYLTVAEVETMEDLVITYTKNLGPGMTKMAKMIDERQQELTHQEHRVMLVNSMNTVKELLPVLISAMK
IFVTTKNSKNQGIIEALKNRNFTVEKMSAEINEIIRVLQLTSWEDAWASKDTEAMKRALASIDSKLNQA
KGWLRDPNASPGDAGEQAIRQILDEAGKVGELCAGKERREILGTCKMLGQMTDQVADLRARGQGASPVAM
QKAQQVSQGLDVLTAKVENAARKLEAMTNSKQSI AKKIDAAQNWLADPNGGPEGEEQIRGALAEARKIAE
LCDDPKERDDILRSLGEIAALTSKLGDLRRQGGDSPEARALAKQVATALQNLQTKTNRAVANSRPAKAA
VHLEKIEQAQRWIDNPTVDDRGVGQAAIRGLVAEGHRLANVMMGPYRQDLLAKCDRVDQLTAQLADLAA
RGEGESPARALASQLQDSLKDLKAQMQEAMTQEVSDFSDTTTPIKLLAVAATAPPDAPNREEVFDERA
ANFENHSRGLGATAEKAAAVGTANKSTVEGIQASVKTARELTPQVISAARILLRNPQNAAAYEHFETMKN
QWIDNVEKMTGLVDEAIDTKSLLDASEEAIKKDLKCKVAMANIQPMLVAGATSIARRANRILLVAKRE
VENSEDPKFREAVKAASDEL SKTISPMVMDAKAVAGNISDPGLQKSFLDSGYRILGAVAKVREAFQPQEP
DFPPPPDLEQLRLTDELAPPKPLPEGEVPPRPPPEEKDEEFPEQKAGEVINQPMMAARQLHDEAR
KWSKGNDI IAAKRMALLMAEMSRLVRGGSGTKRALIQCAKDI AKASDEVTRLAKEVAKQCTDKRIRTN
LLQVCERIPTISTQLKILSTVKATMLGRITNIDEESEQATEMLVHNAQNLMSVKETVREAEAAASIKIRT
DAGFTLRWVRKTPWYQ
    
```

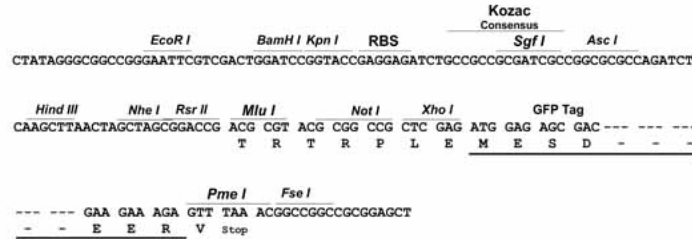
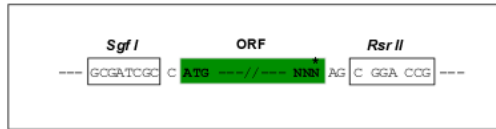
SGPTRRRLE - GFP Tag - V

Restriction Sites:

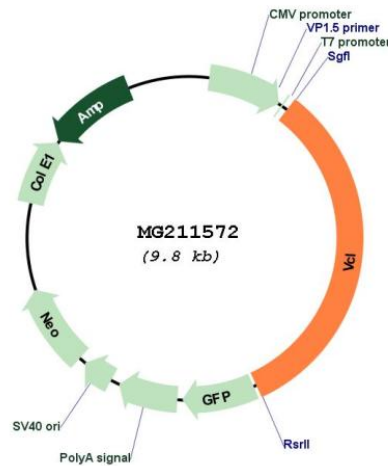
SgfI-RsrII

Cloning Scheme:

Cloning sites used for ORF Shuttling:



Plasmid Map:



ACCN: NM_009502

ORF Size: 3198 bp

OTI Disclaimer: The molecular sequence of this clone aligns with the gene accession number as a point of reference only. However, individual transcript sequences of the same gene can differ through naturally occurring variations (e.g. polymorphisms), each with its own valid existence. This clone is substantially in agreement with the reference, but a complete review of all prevailing variants is recommended prior to use. [More info](#)

OTI Annotation: This clone was engineered to express the complete ORF with an expression tag. Expression varies depending on the nature of the gene.

Components:	The ORF clone is ion-exchange column purified and shipped in a 2D barcoded Matrix tube containing 10ug of transfection-ready, dried plasmid DNA (reconstitute with 100 ul of water).
Reconstitution Method:	<ol style="list-style-type: none">1. Centrifuge at 5,000xg for 5min.2. Carefully open the tube and add 100ul of sterile water to dissolve the DNA.3. Close the tube and incubate for 10 minutes at room temperature.4. Briefly vortex the tube and then do a quick spin (less than 5000xg) to concentrate the liquid at the bottom.5. Store the suspended plasmid at -20°C. The DNA is stable for at least one year from date of shipping when stored at -20°C.
RefSeq:	NM_009502.3
RefSeq Size:	5229 bp
RefSeq ORF:	3201 bp
Locus ID:	22330
UniProt ID:	Q64727
Cytogenetics:	14 11.53 cM
Gene Summary:	Actin filament (F-actin)-binding protein involved in cell-matrix adhesion and cell-cell adhesion. Regulates cell-surface E-cadherin expression and potentiates mechanosensing by the E-cadherin complex. May also play important roles in cell morphology and locomotion (By similarity).[UniProtKB/Swiss-Prot Function]