

## Product datasheet for **MG211531**

### Atxn2l (NM\_183020) Mouse Tagged ORF Clone

#### Product data:

Product Type:	Expression Plasmids
Product Name:	Atxn2l (NM_183020) Mouse Tagged ORF Clone
Tag:	TurboGFP
Symbol:	Atxn2l
Synonyms:	A2D; A2LG; A2lp; A2RP; Atxn12
Mammalian Cell Selection:	Neomycin
Vector:	pCMV6-AC-GFP (PS100010)
E. coli Selection:	Ampicillin (100 ug/mL)
ORF Nucleotide Sequence:	>MG211531 representing NM_183020 Red=Cloning site Blue=ORF Green=Tags(s)

TTTTGTAATACGACTCACTATAGGGCGGCCGGAATTCGTCGACTGGATCCGGTACCGAGGAGATCTGCC  
GCC**CGATCGCC**

ATGTTGAAGCCTCAGCCGCCACAACAGACCTCCCAACCCAGCAGCCGCCCCACGCAACAGGCCGTGG  
CTCGCCGGTCTCCCGCGGGACCAGCCCTCCCAACGGCGGCTCCCGGGACCGCTGACCGCCACCGCGGC  
TCCCCCGGGCTCCCGCAGCGGTCTCTCGTGCCTGGGGCTGCAGCCGCTGCCGGCAGCGGACTTCGC  
CGCGGAGCCGAAAGCATTTAGCGCGTACGCGCCGCCAGCATCAAGAAAGGCCAGGGCAGTGGCTA  
TCGGCAGCGTCAGGGACAGACCACCGAAAGGGACCCACAGTCACCCGTGTTGAAGGTGTCTATAA  
CAATTCAGGATGCTGCATTTCCGACAGCTGTAGTGGTTCTACTTGTGACGTAAGGTGAAAAATGGC  
ACCACTTACGAGGGCATTTCAGACTCTGAGCTCAAAGTTTGAAGTGGCAGTTGACGCGGTGCATCGGA  
AAGCATCTGAGCCAGCAGGTGGGCTCGCCGGGAAGACATTGTGGACACCATGGTGTAAACCAAGCGA  
CGTTCTGCTTGTCCACTCCGAAATGTTGACTTCAATTATGCTACTAAAGATAAGTTCAGTACTCAGCC  
ATTGCCATGAAGTCTAAGGTGAATGGAGAACACAAAGAGAAGGTGCTTCAACGTTGGGAGGGCGGTGACA  
GCAACAGTGACGACTACGATCTGGAATCCGATATGTCTAATGGATGGGATCCCAATGAGATGTTCAAATT  
TAATGAGGAGAACTATGGAGTGAAGACCACCTATGACAGCAGTCTATCTTACACGGTCCCTTAGAA  
AAGGCAACTCTGAAGATTTCCGCGAGCGGGAGCTTCGAGCGGCCAGTTGGCTCGAGAGATTGAGTCTA  
GTCCCCAGTACCGCTACGGATTGCTATGGAAAATGACGATGGGAGAAACAGAGGAGGAGAAGCACAGTGC  
TGTTACGCGCAGGGGTCTGGCGGGAGAGCCCAAGCTTGGTATCCAGGAGGGGAAGTATATCCCCCTG  
CCTCAGCGAGTTCGAGAAGGTCCCCGGGAGGAGTTCGATGCAGCAGTTCGAGGAGGGCGCCCTGGCC  
TTAGCTCTTGCCACCTCGTGGCCCTCACCATCTTGACAACAGCAGTCTGGCCCTGGGTCTGAGGCACG  
TGGTATCAATGGAGTCTTCCCGCATGTCCCCAAGGCACAGCGGCTCTGAGAGGTGCCAAGACCTTA  
TCTTACCAGCAATAGGCCTTCTGGAGAAGCTTCTGTTCTCCAACATCTGCAGCTCTCCCTTTCTTC  
CAGTGGGCGGATGTACCCTCCAGGTCTCCAAGTCTGCTGCCCTGCCCGAGTCTCAGCTTCTGTCC  
TGAGCCTCCATTGGTTCGGCAGTGGCGTCTCTGCCTCCATCCCTGTGACATCATCAGTTGTGGATCCT



[View online >](#)

```
GGTGCAGGCTCTATTTCCCGGCATCTCCAAAACCTCCCTGACCCCTACAGATGTAAAAGAACTCCCAA
CCAAGGAGCCAGTAGGAATTTGGAAGCCAAGAAGCTGGCCCGCATAGCTGGGAAAGTCCCTGGCCTTCA
GAATGAACAAAAACGATTTTCAGTTGGAAGAAGTGAAGAAATTTGGGGCCAGTTTAAAGCTCAACCTAGT
AGCTCCCTGAGACGGGCTGGATCCATTTCTTCCCGGATCTTGAAAGAAGAGGCCAAAGGAAAGGAGA
AAGAGGTGGATGGTCTATTGACTTCAGATCCTATGGGATCCCCAGTCTCCTTAAGACAGAATCCATATT
GGATAAGGAAGACAAAGTGCCCATGGCAGGAGTAGGAGGACTGAGGGGCCAGAGCAGCTCCCAGCACCT
TGTCACGCAACCCGGCAGTCTCCAGTGGGCTCATCAAGGGGGATGAGAAAGAGGAGGGCCCTGTTA
CTGAACAAGTGAAGAAGTCTACTTTGAACCCCAACGCCAAGGAGTTCAATCCAACAAAACCTCTGCTGTC
TGTGAACAAATCTACCAGTACTCCAACCTCACCCAGGGCCCGTACTCATTCAACACCTTCTATACCGGTG
CTGACAGCAGGCCAGAGTGGGCTCTACAGTCCCCAGTACATCTCATATATACCTCAGATCCACATGGGAC
CAGCTGTACAGGCGCCTCAGATGTATCCATATCCTGTATCCAATTCCTGCTGGCAGCAGGGCAAGTA
CCGGGGTGCAAAAGGCTCACTTCTCCTCAGCGCTCTGACCAACACCAACCAGCCTCAGCCCTCCAATG
ATGCAGGTGCTGCTGCTGCTGGCCACCCCTGGTGGCTGCCACACCCTATTCTCTACATCCCCT
ACAACCCACAGCAGTCCCAGGCCAGCCTGCCATGATGCAGCCCATGGCACACTACCTTACAGCCGGT
GTTCCGCCCTATGCTTCAAAGTAATCCAGGAATGTTGACATCGGGAAGCCATCCCAGGCCATCGTGTG
TCTCCACTCCTCAGTACCCTGCTGCAGAGCAGCCTACCCCCAAAGCCCTCTATGCCACTGTTACCAAT
CCTATCCACACCATGCCACGCAGCTCCATGGCCACCAGCCGACGCCGACCACACCTACTGGGAGCCA
GCCACAATCCCAGCATGCGGCCCCAGTCCCGTTCAGCACAGGCCGGGAGGCCCTCACCTGGGAGT
GGACAGCCACAGCAGAATCTGTACCATCCAGGGGCCCTAACAGGCACGCCACCTTCTTACCACCGGGAC
CTTCTGCCAGTCCCCTCAAAGCAGTTCACCCAGCCAGCTGCTGTGTATGCCATCCATCCCACAGCA
GCTGCCCCACGGCTTACCAACATGGCCATGTTACCCAGGCCATGTCCAAACTGGAGTACAGCAGCC
CCGCCCCACACCCTGGGGCTCCCCACCCGCCCCAGGTGATGCTGCTGCACCCCCCAGGGCCATGGGG
GGCCCCCAAGGCGCGGTGCCCCGAGTGGGGTGCCTGCACTCTCAGCTTCCACACCCTCACCTACCC
CTACATCGGACACCCCAAGTTCAATCTCATCCCTCCAGCAGCTCCCTTCCACCCCCGGGAAC
```

ACGCGTACGCGGCCGCTCGAG – GFP Tag – GTTTAA

**Protein Sequence:**

>MG211531 representing NM\_183020  
 Red=Cloning site Green=Tags(s)

```
MLKQPPQQTSTQPPPTQAVARRSPGGTSPNGGLPGPLTATAAPPGPPAAVSPCLGPAAAAGSGLR
RGAESILAAASAPPQHQRPGAVAIGSVRQTTGKPPQSPVFEVYNNRMLHFLTAVVGSTCDVKVKN
TTYEGIFKTLSSKFEAVDAVHRKASEPAGGPRREDIVDTMVFKPSDVLLVHFRNVDFNYATKDKFTDSA
IAMNSKVNGEHKEKVLQRWEGGDSNSDDYDLESDMSNGWDPNEMFKFNEENYGVKTTYDSSLSSYTVPLE
KDNSEEFQRELRAAQLAREIESPQYRLRIAMENDDGRTEEEKHSAVQRQSGRESPLVSREGKYIPL
PQRVREGPRGGVRCSSSRGGRPGLSSLPPRPHHLDNSSPGGSEARGINGGSPRMSPKAQRPLRGAKTL
SSPSNRPSGEASVPPTSAALPFLPVGRMYPPRSPKSAAPAPVSASCEPPIGSAVASSASIPVTSSVDP
GAGSISPASPKLSLTPTDVKELPTKEPSRNLEAQELARIAGKVPGLQNEQKRFQLEELRKFQAQFKLQPS
SSPETGLDPFPSRILKEEAKGKEKEVDGLLSDPMGSPVSSKTESILDKEDKVPMAVGGTEGPEQLPAP
CPSQTGSPPVGLIKGDEKEEGPVTEQVKKSTLNPNAKEFNPTKPLL SVNKSTSTPTSPGPRTHSTPSIPV
LTAGQSGLYSPQYISYIPQIHMGPVAVQAPQMPYPVSNVSPGQKQYRGAKGSLPPQRSDQHQPASAPPM
MQAAAAAGPPLVAATPYSSYIPYNPQQFPGQPAMMQPMAYPSQPVFAPMLQSNRMLTSGSHPQAIVS
SSTPQYPAAEQPTPQALYATVHQSYPHATQLHGHQPQPATTPTGSPQSQHAAPSPVQHAGQAPHLGS
GQPQQLYHPGALTGTPPSLPPGSAQSPQSSFPQPAAVYAIHPHQQLPHGFTNMAHVTQAHVQTGVTAA
PPPHGAPHPPQVMLLHPPQGHGPPQGAVPPSGVPALSASTSPSPYPIGHPQVQSHPSQQLPFHPPGN
```

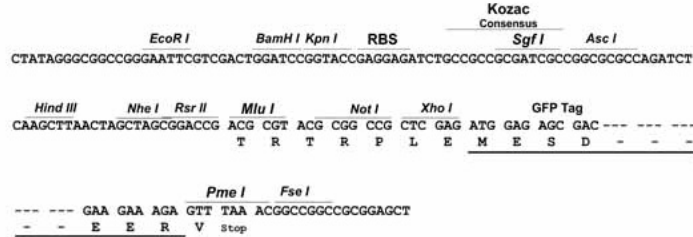
TRTRPLE – GFP Tag – V

**Restriction Sites:**

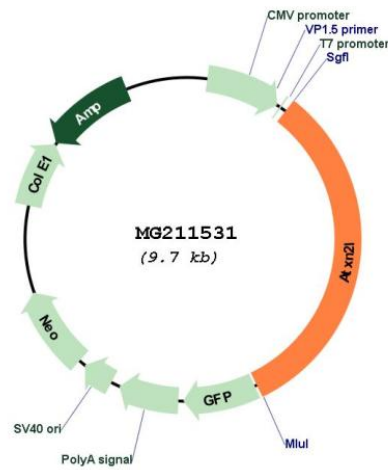
SgfI-MluI

## Cloning Scheme:

Cloning sites used for ORF Shutting:



## Plasmid Map:



ACCN:

NM\_183020

ORF Size:

3147 bp

OTI Disclaimer:

The molecular sequence of this clone aligns with the gene accession number as a point of reference only. However, individual transcript sequences of the same gene can differ through naturally occurring variations (e.g. polymorphisms), each with its own valid existence. This clone is substantially in agreement with the reference, but a complete review of all prevailing variants is recommended prior to use. [More info](#)

<b>OTI Annotation:</b>	This clone was engineered to express the complete ORF with an expression tag. Expression varies depending on the nature of the gene.
<b>Components:</b>	The ORF clone is ion-exchange column purified and shipped in a 2D barcoded Matrix tube containing 10ug of transfection-ready, dried plasmid DNA (reconstitute with 100 ul of water).
<b>Reconstitution Method:</b>	<ol style="list-style-type: none"><li>1. Centrifuge at 5,000xg for 5min.</li><li>2. Carefully open the tube and add 100ul of sterile water to dissolve the DNA.</li><li>3. Close the tube and incubate for 10 minutes at room temperature.</li><li>4. Briefly vortex the tube and then do a quick spin (less than 5000xg) to concentrate the liquid at the bottom.</li><li>5. Store the suspended plasmid at -20°C. The DNA is stable for at least one year from date of shipping when stored at -20°C.</li></ol>
<b>RefSeq:</b>	<a href="#">NM_183020.2</a>
<b>RefSeq Size:</b>	3764 bp
<b>RefSeq ORF:</b>	3150 bp
<b>Locus ID:</b>	233871
<b>UniProt ID:</b>	<a href="#">Q7TQH0</a>
<b>Cytogenetics:</b>	7 F3
<b>Gene Summary:</b>	Involved in the regulation of stress granule and P-body formation.[UniProtKB/Swiss-Prot Function]