

Product datasheet for **MG211495**

Pld1 (NM_008875) Mouse Tagged ORF Clone

Product data:

Product Type:	Expression Plasmids
Product Name:	Pld1 (NM_008875) Mouse Tagged ORF Clone
Tag:	TurboGFP
Symbol:	Pld1
Synonyms:	AA536939; C85393; mPLD1; Pld1a; Pld1b
Mammalian Cell Selection:	Neomycin
Vector:	pCMV6-AC-GFP (PS100010)
E. coli Selection:	Ampicillin (100 ug/mL)
ORF Nucleotide Sequence:	>MG211495 representing NM_008875 Red=Cloning site Blue=ORF Green=Tags(s)

TTTTGTAATACGACTCACTATAGGGCGGCCGGAATTCGTCGACTGGATCCGGTACCGAGGAGATCTGCC
GCC**CGATCGCC**

ATGTCACTGAAAAGCGAGACCAGGGTGAACACGTCTACACTGCAGAAAATCGCCGCAGATATGAGCAACC
TGATAGAAAATCTCGACACCCGGGAGCTTCATTTTGGGGAGAGGAGGTGGAATATGACGCATCTCCAGG
AGACCCCAAGGCCAGGAAGGGTGCATCCCATTCTTTTACAACACTCAAGGATTTAAGGAGCCC
AACATCCAGACCTACCTCTCTGGCTGTCCATAAAAGCACAAGTACTGGAAGTGGAGCGCTTCACATCGA
CCTCAAGGGTGCCAAGTATCAACCTGTACACGATCGAGTTAACGCACGGGGAATTCACATGGCAAGTTAA
GAGGAAAATCAAGCACTCCAAGAGTTTCACAGAGAGCTGCTCAAGTACAAAGCCTTCATCCGGATCCCC
ATCCCCACTAAAAGACATACATTTAGAAGACAAAATGTCAAAGAAGAACCCCGAGAGATGCCAGTCTGC
CCCGTTATCAGAAAACGAATCCAGGAAGAGCAGTTCTTTGGCAGGAGGAAGCAACTGGAAGATTACTT
GACAAAAATACTAAAAATGCCCATGTACAGAACTATCATGCCACGACAGAGTTCCTTGATGTAAGCCAG
CTGTCTTCATCCATGATCTGGGACCAAAGGCCCTGGAAGGAATGATCATGAAAAGGTCTGGGGACACA
GGATACCAGGTGTAATTGCTGTGGCCATGGACGAGCCTGCTACCGGTGGTCAAAGAGGTGGTTGATAGT
AAAAGACTCTTCTGCTCTATATGAAACCAGATAGCGGGGCTATTGCCTTCGTCTCCTGTAGATAAA
GAATTCAGAGTCAAAGTGGGAAGGAAAGAGACAGAAACGAAATATGGACTTCGGATCGATAATCTTTCAA
GGACCCTGATTTTAAAATGTAACAGCTACAGACACGCCCGGTGGTGGGGAGGCGCCATCGAGGAGTTTCA
CCGGAAGCATGGAGCTGACTTCTCAAAGACCATCGCTTCGGGTCTACGCCGCTCTCCATGAGAACACG
TTAGCTAAGTGGTATGTGAACGCCAAAGGTTACTTTGAAGACATCGCAAATGCAATGGAAGAGGCATCGG
AAGAGATTTTTATCACAGATTGGTGGTTAAGTCCAGAAATCTTCTGAAGCGCCAGTGGTGAAGGCAA
CCGCTGGAGGCTGGACTGCATCCTCAAACGAAAGCACAACAAGGTGTGCGGATCTTCATAATGCTTTAC
AAAGAGGTGGAGTAGCCCTCGGGATCAACAGCGAGTACAGCAAGCGGACGTTGATGAGGCTGCACCCCA
ACATAAAGGTGATGAGACACCCAGACCAGTGTCTCCAGCGTGTACCTGTGGGCTCACCATGAGAAGCT
TGTCATTATCGACCAATCAGTGGCTTTCGTGGGTGGGATTGACCTGGCCTACGGAAGGTGGGATGACAA



[View online »](#)

GAGCACAGACTCACAGACGTGGGACAGTGTCAAGCGGGTCACCTCAGGACTGTCTCTGGGCTCCCTCACGG
 CAGCATCAGTAGAGTCTATGGAATCCTTAAGCCTCAAGGATAAACATGAATTTTCATAAAAAGGAGCCCAT
 CTCAAAGATTGTTGATGAGACTGACATGAAGCTGAAAGGGATAGGAAAGTCCAGGAAATTCCTCAAATTT
 AGTCTCTATCGCCAGCTGCACCGTACCACCTGCACAACGCGGACAGCATCAGCAGCATCGACAGCACCT
 CCAACTGGCTCCATCCGCAGCGTGCAGACCGGAGTGGGAGAACTCCACGGGGAGACTAGGTTTTGGCA
 TGGGAAGGATTACTGCAACTTTGTCTTCAAGGACTGGGTTCAACTGGACAAAACCTTTTGTGATTTTCATT
 GACAGGTACTCAACCCCGGATGCCTTGGCATGATATTGGCTCTGTGGTCCATGGAAGGCAGCTCGGG
 ATGTGGCTCGACACTTCATCCAGCGCTGGAACCTCACGAAGATTATGAAGCCAAAATACCGCTCCCTTTC
 TTATCCCTTCTGCTACCAAAGTCTCAAGCGACAGCACAGATTGAGATATCAGGTGCCAGGGGCCGTC
 CCCGCCAAAGTGCAGTTGCTCCGATCTGCTGCTGATTGGTCTGCTGGTATAAAGCACCATGAGGAATCCA
 TCCACGCTGCCTACATCCATGTAATAGAGAACAGCAAGCACTACATCTATATTGAAAACCAATTTTTTCAT
 AAGCTGTGCTGATGATAAAGTTGTGTTCAACAAGGTGGGAGATGCTATCGCCAGAGAATCTGAAAGCC
 CACAGGGAAGGCCAGAGATATCGGGTGTACATTGTGATACCGCTGCTGCCGGATTTCGAGGGAGACATTT
 CCACAGGGCGGGGAACGCTCTACAGGCAATAATGCACTTCAACTACAGAACCATGTGCAGAGGGGAGAG
 CTCATCCTTGAACAGTTAAAGCCAGAGCTTGGTAATAAGTGGATAAATTACATATCGTTTTGTGGACTG
 AGAACACATGCAGAGCTGGAAGGAAACCTAGTCCAGGAGCTCATCTACGTCCACAGCAAGTTGTTAATTG
 CTGACGACAACACAGTTATTATTGGTTCTGCCAACATCAATGACCGGAGCATGCTGGGGAAGCGAGACAG
 CGAAATGGCTGTCATAGTGCAGGACACAGAGACGGTCCCATCGGTGATGGATGGAAGGAATATCAGGCT
 GGTTCGCTTTGCCCGAGACCTTCGCCTGGAGTGCCTCAGACTTGTCTGGGTTATCTTTCTGACCCAAGTG
 AGGACCTTCAGGATCCTGTGAGTGACAAATTTCAAGGAGATTTGGGTTTCAACAGCAGCTCGAAACGC
 TACCATATGATAAGGCTTCCGGTGCCTTCCAATGATGAAGTACACAATTTAATCCAGCTGCGGGAC
 TTTATAAACAAGCCATATTAGCAAAAGAGGATCGCCTTCGCGCCGAGGAAGAACTGAGGAAGATCCGCG
 GGTTCTTGGTGCAGTTCCTCTCTATTTCTTATCAGAAGAGAACCTGCTGCCTTCTGTTGGAACCAAGA
 AGCCATTGTGCCTATGGAGGTTTGGACT

ACGCGTACGCGGCCGCTCGAG - GFP Tag - GTTTAA

Protein Sequence:

>MG211495 representing NM_008875
 Red=Cloning site Green=Tags(s)

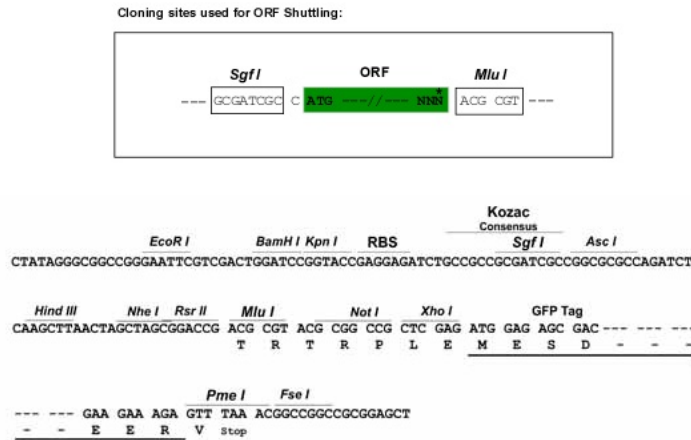
MSLKSETRVNTSTLQKIAADMSNLIENLDTRELHFEGEEVEYDASPGDPKAQEGCIPFSSIIYNTQGFKEP
 NIQTYLSGCPIKAQVLEVERFTSTSRVPSINLYTIELTHGEFTWQVQRKFKHFQEFHRELLKYKAFIRIP
 IPTKRHTFRRQNVKEEPREMPSLPRSENAIQEEQFFGRRKQLEDYLTKILKMPMYRNYHATTEFLDVSQ
 LSFIDHDLGPKGLEGMIMKRSGGHRIPGVNCCGHRACYRWSKRWLIVKDSFLLYMKPDSGAI AFVLLVDK
 EFRVKVGRKETETKYGLRIDNLSRTLILKNSYRHRARWGGAIIEFIRKHGADFLKDRFSGSYAALHENT
 LAKWYVNAKGYFEDIANAMEEASEEIFITDWLWLSPEIFLKRVPVEGNRWRLDCILKRKAQQGVRI FIMLY
 KEVELALGINSEYSKRTLMLRHPNIKVMRHPDHVSSSVYLWAHHEKLVIIIDQSVAFVGGIDLAYGRWDDN
 EHRLTDVGSVKRVTSGLSLGSLTAASVESMESLSLKDKHEFHKKEPI SKIVDETMKLGIGKSRKFSKF
 SLYRQLHRHHLHNADSISSIDSTSNTGSI RSVQTVGVGELHGETRFWHGKDYCNFVFKDWQLDKPFADFI
 DRYSTPRMPWHDIGSVVHGKAARDVARHFIQRWNFTKIMPKYRSLSYFPLLPKSQATAHELRYQVPGAV
 PAKVQLLRSAADWSAGIKHHEESIHAAYIHVIENSKHYIYIENQFFISCADDKVVFNKVGDIAIQRILKA
 HREGQRYRVYIVIPLLPGFEGDISTGGGNALQAIMHFNYRTMCRGESSILEQLKPELGNKWINYISFCGL
 RTHAELEGNLVTIELIYVHSLKLLIADDNTVIIGSANINDRSMLGKRDESEMAVIVQDTETVPSVMDGKEYQA
 GRFARDLRL ECFRLVLGYLSDPSEDLQDPVSDKFFKEI WVSTAARNATIYDKVFRCLPNDEVHNL IQLRD
 FINKPILAKEDRLRAEEELRKIRGFLVQFPLYFLSEENLLPSVGTKEAIVPMVWWT

TRTRPLE - GFP Tag - V

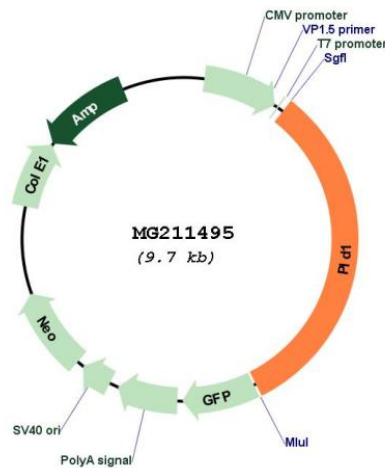
Restriction Sites:

Sgfl-MluI

Cloning Scheme:



Plasmid Map:



ACCN: NM_008875

ORF Size: 4929 bp

OTI Disclaimer: The molecular sequence of this clone aligns with the gene accession number as a point of reference only. However, individual transcript sequences of the same gene can differ through naturally occurring variations (e.g. polymorphisms), each with its own valid existence. This clone is substantially in agreement with the reference, but a complete review of all prevailing variants is recommended prior to use. [More info](#)

OTI Annotation:	This clone was engineered to express the complete ORF with an expression tag. Expression varies depending on the nature of the gene.
Components:	The ORF clone is ion-exchange column purified and shipped in a 2D barcoded Matrix tube containing 10ug of transfection-ready, dried plasmid DNA (reconstitute with 100 ul of water).
Reconstitution Method:	<ol style="list-style-type: none">1. Centrifuge at 5,000xg for 5min.2. Carefully open the tube and add 100ul of sterile water to dissolve the DNA.3. Close the tube and incubate for 10 minutes at room temperature.4. Briefly vortex the tube and then do a quick spin (less than 5000xg) to concentrate the liquid at the bottom.5. Store the suspended plasmid at -20°C. The DNA is stable for at least one year from date of shipping when stored at -20°C.
RefSeq:	<u>NM_008875.4, NP_032901.2</u>
RefSeq Size:	4691 bp
RefSeq ORF:	3111 bp
Locus ID:	18805
Cytogenetics:	3 11.15 cM