

## Product datasheet for **MG211492**

### Llg1 (NM\_008502) Mouse Tagged ORF Clone

#### Product data:

Product Type:	Expression Plasmids
Product Name:	Llg1 (NM_008502) Mouse Tagged ORF Clone
Tag:	TurboGFP
Symbol:	Llg1
Synonyms:	A1325176; Lgl1; Lglh; Mgl1
Mammalian Cell Selection:	Neomycin
Vector:	pCMV6-AC-GFP (PS100010)
E. coli Selection:	Ampicillin (100 ug/mL)
ORF Nucleotide Sequence:	>MG211492 representing NM_008502 Red=Cloning site Blue=ORF Green=Tags(s)

TTTTGTAATACGACTCACTATAGGGCGGCCGGAATTCGTCGACTGGATCCGGTACCGAGGAGATCTGCC  
GCC**CGATCGCC**

ATGATGAAGTTTCGGTCCGGCGGCAGGGCGCCGACCCGACGCGGAGAAGCTTAAGCAGGAGCTTTCG  
CCTTCCACAAGACTGTGGAGCATGGCTTCCCAATCAGCCAGCGCCTTGGCCTTCGATCCTGAGCTCCG  
CATCATGGCCATCGGCACCAGATCTGGGCGGTCAAGATCTATGGTGCACCCGGAGTGGAATTTACAGGC  
CTACATCGGGACGACCCACCGTACCCAGATGCATTTCTCCCTGGTACGGGCCGCTCCTGACCTGC  
TAGATGACAGCAGCTTGCATCTCTGGGAGATCATCCATCATAATGGCTGCGCCACCTGGAGGAAGGCC  
CAGCTTCCACCCACCCAGCAGACCCAGTTTTGACAATGCCAGTTTCCCTGCCAGTCTAACACGTGTCACT  
GTGGTCTGCTCGTAGCTGGCAATACAGCAGCCCTGGAACTGAGAGTGGTAGCATATTCTTCTGGATG  
TAGCCACCCTGGCACTGTGGAGGGCAGACTCTCAGCCAGATGTGGTCTGCGCAGTGTGCCAGATGA  
TTACCGGTGTGGAAAGGCCTTGGGCCCTGTGGAGTCACTCCAGGGACATCTGCAAGACCCAGCAAGATC  
CTCATAGGCTACAGTCCGGGTTTACTGGTATCTGGAGCCAGGCCACACAGTCTGTGGACAACGTTTTCC  
TAGGTAACCAGCAGCTGGAGAGCCTGTGTTGGGGCCGTGATGGCAGCAGCATTATCAGCTCACACAGTGA  
TGGCAGCTATGCCATCTGGTCCACAGACTGGCAGCCCCAACGCTGCAGCCCACTGTAGTGACCACA  
CCCTACGGCCCCCTCCCTGCAAGGCCATCAACAAGATTCTGTGGCGGAGCTGTGAGTCAGGAGACCCT  
TTATCATCTTCAGTGGTGGCATGCCTCGAGCCAGCTATGGTGACCGCCACTGTGTGAGTGTACTGCGAGC  
AGAGACTGTTGACCTGGACTTCACCTCTCGTGCATTGACTTCTTACGGTGCACAGCACACAGCCA  
GAGGATGAGTGTGACAACCCCGAGCCTTAGCCGTGCTTCTGGAGGAGGAGCTGGTGGTGTGGACCTGC  
AGACACCAGGCTGGCCAGCTGTGCCCGCCCTTACCTGGCCCACTGCATTGTCAGCTATCACCTGCTC  
TGCCCATGTTGCCAATGTCCCAGCAAGCTGTGGGCCGATTGTAAGTGTGGTGGAGCAGCAGAGCCCA  
CAGCCTGCCTCCAGTGCCTTGGATTGGCCATTACCGGGGCCGAACTTGGCCAGGAACCCTCGCAGC  
GTGGGCTGCTGCTCACTGGCCATGAGGATGGCACTGTGCGGTTCTGGGACGCTCTGGTGTGGCGCTAAG  
GCCACTACAACTGAGCACAGCTGGCCTCTCCAGACGGACTGTGAACATGCTGACAGCTGGCCAG



[View online >](#)

GCTGTGGAGGATGACTGGCCGCCCTCCGCAAGGTGGGCTGCTTTGATCCCTACAGTGATGACCCCCGGC  
TAGGAATCCAGAAGGTTGCGCTTTGCAAGTACACAGCCAGATGGTGGTAGCTGGCACTGCAGGCCAGGT  
GCTGGTCTGGAGCTCAGTGAGGTCCCAGCAGAGCATGCCGTAGTGTGGCCAACGTGGATCTTCTTCAG  
GATCGCGAGGGCTTACGTGGAAGGGTACAGAGCGGTGAACCCACACACGGGGCTGCTGCCGTGGCCTG  
CCGGATTCCAGCCCCGATGTGATACAGTGCCTCCACCCGCGCTGCTACTGCTGTACACTCCATGC  
TGAGTGGAGCCTCGTGGCCTTTGGTACCAGTATGGCTTTGGCCTTTTACTACCAGCGCAAGAGCCCT  
GTGCTGGCTAGGTGCACCCTTACCCCAATGATTCTTTGGCCATGGAGGGGCCACTGTACGGGTGAAGT  
CCCTCAAGAAGTCACTGAGACAGTATTCCGGCGAATCCGCAAGAGCCGTGTCTCAGGCAAAAACGGAC  
TCCTGCTGCCAGTAGCAAGTTGCAGGAGGCCAATGCCAGCTGGCCGAGCAGACCTGCCACACGACCTG  
GAGATGACACCCGTGCAGCGCCGATTGAGCCTCGGTCTGCTGACGACTCGCTCTCCGGTGTGTACGCT  
GCCTCTACTTTGCTGACACGTTCTTCGAGATGCGACCCACCACGGGCCACCATGTGGCGGGCACCAA  
CTCGGGCTCTGTGTTGCGCTATGCGCTGGAGTTCCAGCAGCCACAGCAGGCGGAGAGAAGCGCCCTGAG  
CAGGCAGTGGAGGCGGTGCTGGCAAGGAGGTGCAGCTAATGCACCGAGCACCTGTGGTGGCCATTGCTG  
TGCTGGATGGTCTGGCCGGCCACTGCCTGAGCCCTATGAGGCTTCCCGGACCTGGCCAGGCGCCAGA  
CATGCAAGGCGGCATGTGTGCTATTGCATCTGAGGAACAATCAAGGTGTTCACTACCAAGGTG  
AGTGCTAAGACTAAATCAAGCTTACAGCCATGAAGGCTGTCGTGTGCGGAAGGTAGCCCTGGCTACAT  
TTGCCAGCGTGATGTCTGAGGACTATGCCGAGACCTGCCTTGCCTGCCTACCAACCTGGGTGATGTCCA  
CGTCTTCTCGGTGCTGGCTGAGGCTCAGGTGCACTACTCCTGTATCCGGAAGGAGGACATCAGTGGC  
ATCGCTTCTGTGCTTTCACACGTACAGGCCAGGGCTTTACTTGATTTCTCCATCGGAATTTGAGCGCT  
TCTCACTGAGTGTGCGAACATCAGAACTATGTTCTCTGGATATAAGCTGGCCCCAAAATGCCAC  
CCAGCCCAGGCTTCAAGAGTACCCAAGCTGAGCCAGGCTAATGGGACCAGAGACATCATTCTGGCCCCA  
GAGAGCTGCGAAGGAAGCCCTAGCTCTGCCACAGCAAGCAGCTGATACCATGGAACACCCGAGGCCG  
CTCTCTCGCCTGTGCCATTGATTCAGTGTCTAGTGGGATACCATGCTGGACACAACAGGGGATGTCAC  
CGTGAATATGTGAAGGATTTTCTGGGG

ACGCGTACGCGGCCGCTCGAG - GFP Tag - GTTTAA

**Protein Sequence:**

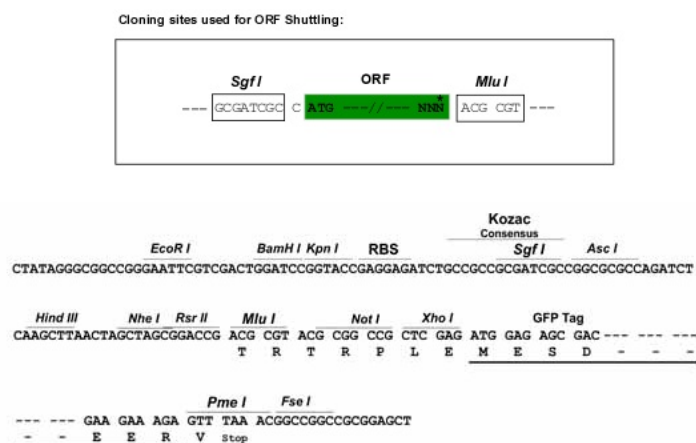
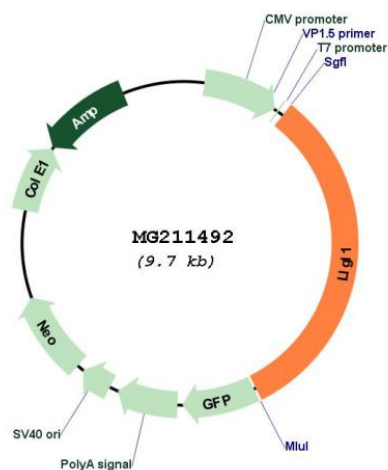
>MG211492 representing NM\_008502  
Red=Cloning site Green=Tags(s)

MMKFRFRQGADPQREKLKQELFAFHKTVEHGFNPQPSALAFDPELRIMAIGTRSGAVKIYGAPGVEFTG  
LHRDAATVTQMHLPGQGRLTLLDDSSLHLWEIHHNGCAHLEEGLSFHPPSRPSPFDNASFPASLTRVT  
VYLLVAGNTAALGTESGSIFFLDVATLALLEGQTLSPDVVLRVSPDDYRCGKALGPVESLQGHLDQPSKI  
LIGYSRGLLVIWSQATQSVDNVFLGNQQLLESLCWGRDGSIISSHSDGSYAIWSTDTGSPPTLQPTVVTT  
PYGPFPCAKINKILWRSCESGDHFIIFSGMPPRASYGDRHCVSVLRAETLVTLDFTSRVIDFFTVHSTQP  
EDECNDPQALAVLLEELVVLDLQTPGWPAPVAPYLAPLHSSAITCSAHVANVPSKLWARIVSAGEQQSP  
QPASSALSWPITGGRNLAQEPSQRGLLTLGHEDGTVRFWDASGVALRPLYKLSTAGLFQTDCEHADSLAQ  
AVEDDWPFRKVGCFDPYSDDPRLGIQKVALCKYTAQMVVAGTAGQVLVLELSEVPAEHAVSVANVDLLQ  
DREGFTWKGHERLNPHTGLLPWPAGFQPRMLIQCLPPAAVTAVTLHAEWSLVAFGTSHGFLFDYQRKSP  
VLARCTLHPNDSLAMEGPLSRVSLKSLRQSFRRIRKSRVSGKKRTPAASSKLQEAANAQLAETCPHDL  
EMTPVQRRIEPRSADDSLSGVVRCLYFADTFLRDATHHGPTMWAGTNSGSVFAYALEVPAATAGGEKRPE  
QAVEAVLKEVQLMHRAPVVAIAVLDGRGRPLPEPYEASRDLAQAPDMQGGHAVLIASEEQFKVFTLPKV  
SAKTKFKLTAHEGCRVRKVALATFASVMSDYAETCLAELTNLGDVHVFSVPLRQVHYSCIRKEDISG  
IASCVFTRHGQGFYLIISPSEFERFSLSARNITEPLCSLDISWPQATQPRLOQESPKLSQANGTRDII LAP  
ESCEGSPSSAHSKRADTMPEPEAALSPVSDSAASGDTMLDITGDVTVEYVKDFLG

TRTRPLE - GFP Tag - V

**Restriction Sites:**

Sgfl-MluI

**Cloning Scheme:****Plasmid Map:**

**ACCN:** NM\_008502

**ORF Size:** 4416 bp

**OTI Disclaimer:** The molecular sequence of this clone aligns with the gene accession number as a point of reference only. However, individual transcript sequences of the same gene can differ through naturally occurring variations (e.g. polymorphisms), each with its own valid existence. This clone is substantially in agreement with the reference, but a complete review of all prevailing variants is recommended prior to use. [More info](#)

<b>OTI Annotation:</b>	This clone was engineered to express the complete ORF with an expression tag. Expression varies depending on the nature of the gene.
<b>Components:</b>	The ORF clone is ion-exchange column purified and shipped in a 2D barcoded Matrix tube containing 10ug of transfection-ready, dried plasmid DNA (reconstitute with 100 ul of water).
<b>Reconstitution Method:</b>	<ol style="list-style-type: none"><li>1. Centrifuge at 5,000xg for 5min.</li><li>2. Carefully open the tube and add 100ul of sterile water to dissolve the DNA.</li><li>3. Close the tube and incubate for 10 minutes at room temperature.</li><li>4. Briefly vortex the tube and then do a quick spin (less than 5000xg) to concentrate the liquid at the bottom.</li><li>5. Store the suspended plasmid at -20°C. The DNA is stable for at least one year from date of shipping when stored at -20°C.</li></ol>
<b>RefSeq:</b>	<a href="#">NM_008502.1</a>
<b>RefSeq Size:</b>	4279 bp
<b>RefSeq ORF:</b>	3105 bp
<b>Locus ID:</b>	16897
<b>UniProt ID:</b>	<a href="#">Q80Y17</a>
<b>Cytogenetics:</b>	11 37.81 cM
<b>Gene Summary:</b>	Cortical cytoskeleton protein found in a complex involved in maintaining cell polarity and epithelial integrity. Involved in the regulation of mitotic spindle orientation, proliferation, differentiation and tissue organization of neuroepithelial cells. Involved in axonogenesis through RAB10 activation thereby regulating vesicular membrane trafficking toward the axonal plasma membrane.[UniProtKB/Swiss-Prot Function]