

## Product datasheet for **MG211472**

### **Cobll1 (BC067007) Mouse Tagged ORF Clone**

#### Product data:

**Product Type:** Expression Plasmids  
**Product Name:** Cobll1 (BC067007) Mouse Tagged ORF Clone  
**Tag:** TurboGFP  
**Symbol:** Cobll1  
**Synonyms:** 1810047P18Rik; Coblr1; D430044D16Rik  
**Mammalian Cell Selection:** Neomycin  
**Vector:** pCMV6-AC-GFP (PS100010)  
**E. coli Selection:** Ampicillin (100 ug/mL)  
**ORF Nucleotide Sequence:** >MG211472 representing BC067007  
 Red=Cloning site Blue=ORF Green=Tags(s)

TTTTGTAATACGACTCACTATAGGGCGGCCGGAATTCGTCGACTGGATCCGGTACCGAGGAGATCTGCC  
 GCC**CGATCGCC**

ATGGACCCGACGCTCCCGGATCCCCTACCCCGCAGCGCGCCCGCACCCCGCCATGCAGCCCGGGCT  
 CCGCAGGGAAAACAAAAGGGAAGGCGCCTTCTCCTCCGGCCGAGACGAAGGGCACTGATGTCTTCTCTGC  
 TGAAGACCCTGTAGAATCTACTGCTGTCGTACAGAGCAACAAGACAATATGATAGATAAAGATATTGAG  
 CTCTCAGTGGTCTGCCGGGAGATATCCTCAAGTCTACTACTGTTCATGGCAGTAAGCCAATGATGGACT  
 TGCTCGTGTCTCTGTGCTCAGTATCACTTAAATCCGTCAAGTCACACAATTGATTTGCTCTGTCTGA  
 AGAGAACCTTATCAAATTAAGCCAAACACACCAATAGGAATGCTGGATGTAGAGAAGGTAATTTAAAG  
 CCAAAATCTCTGGATAAGAAAAAGCCTACACCTATAATCCAGAGAAAATGTGAGAGTAGTGATCAACT  
 TTAAGAAAACACAGAAGACCATAGTGAGAGTTAGTCCCCACGCACCCCTCAAGATCTTGCTCCCATCAT  
 ATGCAGTAAATGTGAGTTTGATCCGTTGCATACCGTGTGTTGAAGGATTACCAGGCTCAGGAGCCCTC  
 GACTTGACAAAATCTCTTAATGACTTGGGACTAAGAGAGTTATATGCCATGGATATCAGCAGAGAGTCTC  
 GCCAAATATCACACAACCCGGACATTGTGAAGGAGAAAAGAAAACAAGGGATTTTCAGTTTTTCCAACG  
 CAGCAAGAAAAAGCGAGAGCAAACTGCCAGTGTCTCCTGCGACCCCACTAGTGAGCAAGCATCGTCCATCT  
 TTCACGAGGTCCAACACCATTTCCAACCGTACATTTCCAATACCCTGCCCTCGGATGCACCCAAGAAGA  
 GACGTGCCCACTGCCACCGATGCCACATCCCAGGGTGTCTCAAGGCCAGGAGAGACGAGCGTCTTG  
 TGTGGAGAGATCCACCAGTGTGGACGACACAGATAAGAGTTCTCTGAAGCGATCATGGTGAAGACAGGA  
 TCACTGCAGCTCAGCAGCACGTGATAGGAACCTCATCTCTGAAGAGAACGAAGCGAAAAGCACCTGCC  
 CACCTTCGAAAACCCCTGGCTCAGACTGATGAAAGGAACCTGCAATGGCTCATGGCCTACCTTTGGA  
 AGATGGGATTGCTCCAGACAGCATGTTGGAAGTGAAGTCTCCCGAGGGAATGTCCACCCAGCTGGTGA  
 AGCTCTGATTACAGTCTTGAGGAGATAGATGAAAAGGAAGAACTCAGCGAGGCATCTAAAGATCCGGCTG  
 GAAGTATTTCTGTGAAGTCGCTGACATTGCTTCAGCATCGACTGATATGAGAATTACAGTGAGAAAGGA  
 TCCTGATTCAGCCCTCGGCATCAGTGTGAGAGACCTCTCCAAGCTCCAAGGAAAAACTCAAGAAGGC



[View online »](#)

AGAAGCACAGAGGGGCAAGGGCCGTATCATCTGTGTAGGCCATATAGGCAATGAGGACAGAGTATCTG  
 ACAGTATAAAAAGACATGAAGACTGGGCCAAACCAGGAGAGTGTAGTTCAAAATGAAATCATGGTCTG  
 TGCCACAAGCACAGATTATGTGAAAAACAGACCGGGGAAAATGAAACCACCATAGAAGGCGAAGGCGAA  
 GCTCTGAAGAAAGCCAGCGACATGGAACTGATAGATTGTCAGGCTCTCCTGCATGTAGAATGGACAATG  
 TTTAAAGTTCGAGGGAAAATCATCTAACAGCATCGCCAGGACCAGATCAAAATGAAATCAACCAGGTGT  
 AGAGAAGACGAAAATGCAGGATGCAGCAATTGAGCCACCCTGCCCGCGGCACCTTTTGTGGGAATCAC  
 GAAGTCAGTAATTCATCTGACCCAGGGCTGATGAGACTGTGCAGACTTCGGATGGCAGCATATCAGCTC  
 AGCACTCCTCTGCAAGTCTCCAGATTCTGTAATGCCTCAAGAGAATTCAGGAGTCAGGGCACCTCAAC  
 TTATGTACAAGATAGACTCCCTGAGAAAGGCCAGCTTGTACATATGGGAACAATGTCCCTTTGTACCT  
 GTAGATGGAAGTAATAAGAATCCAGCTGCTTCTTACCTAAAGAACTTTCCACTTTATAGGCAAGACTCCA  
 ACCCCAAGCCAAAACCGTCAAATGAAATCAGGAGAGTATATACCTAAAATGGAATGACTACTTATAA  
 AATAGTACCTCCGAAATCCCTGGAAATGGCGAAAGACTGGGAATCAGAAGCAATGGGGAGGAAAGATGAC  
 CAAAAGATGCTCCCTGTAGGGCAGAGGCATACGATTGAGAATATGACAGAACTTCCATGCAAACAGAAG  
 TCCCTGCTACTTCTAAAAGCTCACAGCAGCCTCAGCCTGACCTTAAACCAAAGCCAGCTCAGGAACAGA  
 GCGTCATTTGCACAGGACTTTGAGCTACCAACTGGTACCGAGACGAACCCTCCCAAAGCACCCAGAGTG  
 ACTACAGACACTGGCACCATTCTTTTGGCCAAATTTGGAAGATATAACAATATTTTGGAGTCAAAT  
 TTAGATCCCGAGCTTCAAATCCCCAGGCCAAACCAAGTTCATTCTTTTGCAGATGCAAAAAGAGAGCATC  
 AGGCCACTATGTGACATCTGCAGCTGCTAAGAGCGTCCACTGCCCTGGGCTGCCCTAAAGAGCCA  
 ACAATCAAGGAGGTGCAGAGGGACCCACAGCTTCTCCAGAACAGCATCCTTCTTCTTAAGTGAAGGA  
 CTCACTGTCTCCGCTGCCCAATATTTCAAAGCTGATGATGATATAATTCAGAAGCCTGCCGAGACCTC  
 TCCTCCTCTGTAGCTCCCAAACCAATGACTCTTCGTGCCGAGACCTCTCCTCCTCTGTATTTCCAAA  
 CCAATGACTCTTCTGTAGACCTCTCCTCCTCTGTATTTCCCAAACCAATGACTCTTCTGCCGAGA  
 CCTCTCTCCTCTGTATTTCCCAAACCAATGACTCTTCGAGCCGAGACCTCTCCTCCTCTCTG

ACGCGTACGCGGCCGCTCGAG - GFP Tag - GTTTAA

**Protein Sequence:**

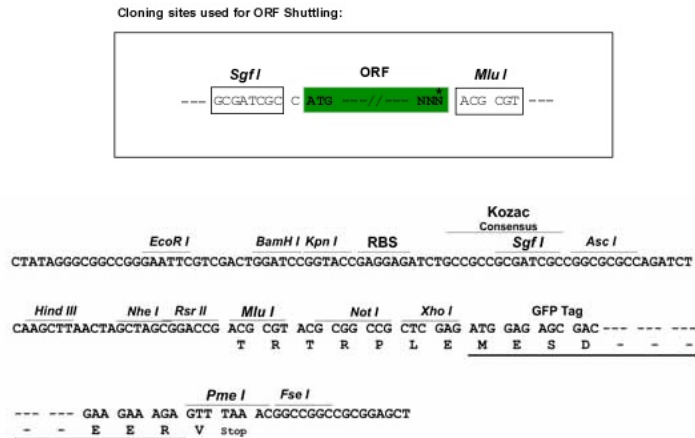
>MG211472 representing BC067007  
 Red=Cloning site Green=Tags(s)

MDRSVPDPLPRAPRTPAMQPAGSAGTKGKAPLPPAETKGTDVSSAEDPVESTAVVTEQQDNMIDKDIE  
 LSVVLPDILKSTTVHGSKPMMDLLVFLCAQYHLNPSSHTIDLLSAEENLIKFKPNTPIGMLDVEKIVLK  
 PKSLDKKPTPIIPEKTVRVVINFKKTQKTIIVRVSPHAPLQDLAPIICSKCFDPLHTVLLKDYQAQEP  
 DLTKSLNDLGLRELYAMDISRESCQISHNPDIIVKEKENKGIFSFQRSKKREQTASAPATPLVSKHRPS  
 FTRSNTISKPYISNTLPSDAPKKRRAPLPPMPTSQGAAQQERRASCVERSTSVDDTDKSSSEAIMVRTG  
 SLQLSSTSIGTSSLKRTKRKAPAPPSKTPLAQTDERNSAMAHGLPLEDGIAPDSMLELSSPEGMSTPAGV  
 SSDYSLEEIDEKEELSEASKDPAGSISVKSPDIASASTDMRITVEKDPDSALGISDGETSPSSKGTQEG  
 RSTEGQGPYHPVVGHIGNEDRVSDSIKDMKTLGPNQESVVQNEIMVCATSTDYVKNRPGKMETTIEGEGE  
 ALKKASDMETDRLSGSPACRMDNVKSSRENHLTASPGPDQKLNQPGVEKTKMQDAAIQATPARGTFDGNH  
 EVSNSSDPRADETVQTSDGSI SAQHSSASLQDSVNASREFRSQGTSTYVQDRLPEKEPACTYGNVPLSP  
 VDGSNKNPAASYLKNFPLYRQDSNPKPKPSNEITREYIPKIGMTTYKIVPPKSLEMAKDWESAMGRKDD  
 QKMLPVGQRHTIENMTETSMQTEVPATSKSSQQPQDLKPKPSSGTERHLHRTLSSPTGTETNPPKAPRV  
 TTDGTIPFAPNLEDINNILESKFRSRASNPAKPSFFLQMQKRASGHYVTSAAAKSVHTAPGPAPKEP  
 TIKEVQRDPQLSPEQHPSLSERTHSAPLNPISKADDDIIQKPAETSPPPVPKPMTLRAETSPPPVPK  
 PMTLPAETSPPPVPKPMTLPAETSLPLVFPKPMTLRAETSPPPL

TRTRPLE - GFP Tag - V

**Restriction Sites:**

Sgfl-MluI

**Cloning Scheme:**


**ACCN:** BC067007

**ORF Size:** 3077 bp

**OTI Disclaimer:** The molecular sequence of this clone aligns with the gene accession number as a point of reference only. However, individual transcript sequences of the same gene can differ through naturally occurring variations (e.g. polymorphisms), each with its own valid existence. This clone is substantially in agreement with the reference, but a complete review of all prevailing variants is recommended prior to use. [More info](#)

**OTI Annotation:** This clone was engineered to express the complete ORF with an expression tag. Expression varies depending on the nature of the gene.

**Components:** The ORF clone is ion-exchange column purified and shipped in a 2D barcoded Matrix tube containing 10ug of transfection-ready, dried plasmid DNA (reconstitute with 100 ul of water).

**Reconstitution Method:**

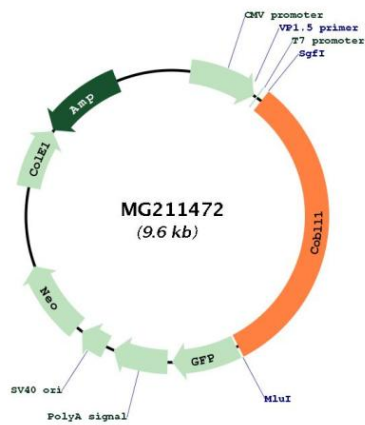
1. Centrifuge at 5,000xg for 5min.
2. Carefully open the tube and add 100ul of sterile water to dissolve the DNA.
3. Close the tube and incubate for 10 minutes at room temperature.
4. Briefly vortex the tube and then do a quick spin (less than 5000xg) to concentrate the liquid at the bottom.
5. Store the suspended plasmid at -20°C. The DNA is stable for at least one year from date of shipping when stored at -20°C.

**RefSeq:** [BC067007](#), [AAH67007](#)

**RefSeq Size:** 3983 bp

RefSeq ORF: 3077 bp  
 Locus ID: 319876  
 Cytogenetics: 2 C1.3

**Product images:**



Circular map for MG211472