

Product datasheet for **MG211444**

Man2b1 (NM_010764) Mouse Tagged ORF Clone

Product data:

Product Type:	Expression Plasmids
Product Name:	Man2b1 (NM_010764) Mouse Tagged ORF Clone
Tag:	TurboGFP
Symbol:	Man2b1
Synonyms:	AW107687; LAMAN
Mammalian Cell Selection:	Neomycin
Vector:	pCMV6-AC-GFP (PS100010)
E. coli Selection:	Ampicillin (100 ug/mL)
ORF Nucleotide Sequence:	>MG211444 representing NM_010764 Red=Cloning site Blue=ORF Green=Tags(s)

TTTTGTAATACGACTCACTATAGGGCGGCCGGAATTCGTCGACTGGATCCGGTACCGAGGAGATCTGCC
GCC**CGATCGCC**

ATGGGCACCGGACCGCTCACCTCTGGTGTCCGTGCTGGTGGCGGGAACACCGGGTGGCTCTGGATGAGCT
CCTGCAACCTAGGTTTCGCCAGTCTGCCTATTTCTTTCTTTTTGGCTGTTGCTGGCCGCGCTGGCGC
TCGGGCCCGGGTTACAAGACATGTCCCCAACGAAGCCAGGCATGCTCAACGTGCACCTGCTGCCTCAT
ACACACGATGATGAGGCTGGCTGAAGACAGTGGACCAATACTATTACGGCATCCTGAGTGATGTTCAAC
ACGCGTCTGTTTACGTACATCCTAGACTCAGTAGTCTCCTCTACTGGAGAAACCCACCCGTCGTTTCAT
CTATGTGGAAATGGCTTTCTTCTCCCGTTGGTGAAGCAGCAGACCAGTGAACCCAGGACGCTGTACGG
AACCTGGTGCGCCAGGGCGCCTGGAGTTGTCAATGGTGGCTGGGTGATGAACGACGAAGCAGCCACCC
ACTATGGCGCGATTGTGGACCAGATGACACTTGGGCTACGCTTCTCGAAGACACATTTGGTAGTGATGG
ACTTCCCGTGTGGCCTGGCATAATTGACCTTTTCGGCCACTCTCGAGAACAGGCCCTCCCTGTTTGCCAG
ATGGGTTTTGATGGCTTCTTCTTGGGCGCATTGACTATCAAGATAAACTTAATCGGAAGAAAAAGCTGA
GGATGGAGGAGCTGTGGAGAGCTAGTGACAGCTGGAGCCCCCGCTGCTGACCTCTTACTGGTGTGCT
CCCCAATAATTACAACCCCCGAAATACCTGTGCTGGGATGTGCTATGTACAGACCCTCCCGTGGTGGAT
AATCCCGGAGCCCTGAGTTCAATGCAAAAACGTTGGTCAACTACTTCTGAAGCTGCTTCTTCCAG
AAGGGTTTTACCGAACCAACCACACCGTGATGACCATGGGCTCAGACTTCCATTATGAGAATGCCAACAT
GTGGTTCAAAAACATGGACAAGCTGATCCGCCTGGTCAACGCGCAGCAGGCAACGGGAGCCTCGTCCAC
GTTCTCTACTCCACCCTACGTGTTACCTCTGGGAGCTGAACAAGGCCAATCTCACCTGGACAGTGAAGG
AGGACGACTTCTTCTTATGCCGATGGCCCCACATGTTCTGGACTGGCTATTTTTCCAGCAGGCCAGC
CCTCAAGCGCTATGAGCGCCTCAGTTACAACCTCCTGCAGGTGTGTAACCAGCTGGAAGCACTGGTGGGT
CCCGAAGCCAACGTGGGACCCTATGGCTCGGGAGACAGCGCACCTCTCAGGAGGCAATGGCGGTGCTCC
AACACCACGACGCTGTCAGTGGTACTGCAAGGCAGAATGTTGTAATGACTACCGGAGGCAGCTGGCAGC
AGGCTGGGACCCTGTGAGGTTCTCGTGAGCAACGCTCTGGCGGACTCAGCCATTACAACAGAACTTC



[View online »](#)

TCATTCTGTCGTGAGCTCAACATTAGCATCTGCCAGTCAGCCAGACTTCGGAGCGTTTCCAGGTAACCT
 TTTACAACCCCTGGGGCGAAAAGTGGATCAGATGGTTCGGCTGCCTGTCTATGAAGGCAACTTCATTGT
 GAAGGACCCATGATAAGAACATTTCCAGTAATGTGGTGATGGTTCCTAGCTATTACAGTGAGACTTAC
 CAATGGGAGCTGCTGTTCCAGCCTCAGTGCCTGCCCTGGGCTTCAGCACCTACTCTGTGGCCAAAATGA
 GTGACCTTAACCACCAAGCCACAACCTGCTGTCCAGGCCAGGAAACACAAGTCCCATCATGTCTTAGT
 CATTGAAAATAAGTACATGCGGGCCACATTTGACTCTGGCACGGGGTTATTGATGAAGATTGAAAACCTG
 GAACAGAACCTCTCGCTCCCTGTGAGCCAAGGCTCTTTTGGTATAATGCCAGTGTGGTGATGAGGAGA
 GTTCTCAGGCCTCTGGGCCTACATCTTCAGACCCAATGTCGGTAAACCGATACCTGTGAGCCGCTGGGC
 TCAGATCAGTTTGGTGAAGACAGCCTTGGTGCAGGAGGTACACCAGAATTTTTCAGCCTGGTGTCCCAA
 GTGATTCGCTGTACAAAGGACAGCGCCATTTGGAGCTGGAGTGGACGGTGGGACCAATCCCAGTGAGAG
 ATGACTGGGGGAAGGAAGTATCAGCCGCTTTGACACCCAATGAAAACCAAGGGACAGTCTTTCACGGA
 CAGCAACGGCCGGGAAATCCTGAAGAGGAGGGATGATTATCGACCCACCTGGACATTGAATCAGACTGAG
 CCGGTGGCTGAAATTACTATCCTGTCAACACTCGAATTTACATCACGGATGGGCAAATGCAGCTGACCG
 TGTGACCAGCCCTCCAGGGGGCAGCAGTCTGCAGGATGGCTCGTTGGAGCTCATGGTGACCCGTCG
 GCTGTTGGTAGATGATGATCGTGGAGTGTCCGAAACCTTGTGGAGACAGATACCGGGGATAAGGTTCGA
 GGACGCCACCTTGTGCTTTTGTGCTGTGTCAGTGTGCCCTGCAAGACACCCGACTGCTGGCGGAACAAG
 AAGTCTGGCCCTCAGGTGGTGTCTCTGGGTGGTAGCAGTCCCTATCACTCCCGGGCGACACCAAAA
 AACGCAGTTTTCCGACTTCGCCAGGAGCTACCTCCTCAGGTGCATTTGCTCACACTGGCCCGCTGGGGG
 CCAAAGATGCTGCTGCTGCGCTTGGAGCACCAGTTCGCTCTGAAAGAAGATTGGATCGCAACCTGAGCT
 CCCCTGTAACCTTGAACGTTTCAAGCCTGTTCCAGACCTCACTATCAACTACCTGCAGGAGACCACACT
 GGCAGCCAACAGCCCTGTCCAGGGCTTCCAGGCTCAAGTGGATGACAAATACTGGTCCCACCTCCTTC
 CCTGAGCCTTCCAAGTTGACCCCTACCTCAGTCACTGAAGCCTATGAAATACGTACCTTCTGGCCT
 CTGTACAATGGCAAGAACACAGGCCTGCC

ACGCGGCCGCTCGAG - GFP Tag - GTTTAA

Protein Sequence:

>MG211444 representing NM_010764
 Red=Cloning site Green=Tags(s)

MGTGPLTSGVRAGGNTGWLWMSSCNLGSPLVPIISFLFWLLLAAPGARAAGYKTCPPTPKGMNLNVHLLPH
 THDDVGLKTVDDQYYYGILSDVQHASVQYILDSVSSLLEKPTRRFIYVEMAFFSRWVKQTSATQDAVR
 NLVYRQGRLEFVNGGWMNDEAATHYGAIVDQMTLGLRFLQDTFGSDGLPRVAWHIDPFGHSREQASLFAQ
 MGFDFGFLGRIDYQDKLNRKKLRMEELWRASDSLEPPAADLFTGVLPNNYNPPKYLWVDVLCDDPPVVD
 NPRSPEFNAKTLVNYFLKLASSQKGFYRTNHTVMTMGSDFHENANMWFKNMDKLRVNAQQANGSLVH
 VLYSTPTCYLWELNKANLTWTVKEDDFPYADGPHMFWTGYFSSRPALKRYERLSYNFLQVCNQLEALVG
 PEANVGPYSGDSAPLQEAMAVLQHHDVSGTARQNVNDYARQLAAGWGPCEVLVSNALARLSHYKQNF
 SFCRELNISICPVSQTSERFQVTLYNPLGRKVDQMVRLPVYEGNFIVKDPHKKNISSNVVMVPSYSEY
 QWELLFPASVPALGFSTYSVAKMSDLNHQAHNLLSRPRKHKSHHVLVIENKYMRAFDFSGTGLLMKIENL
 EQNLSLPVSQGFVYNASVGDDESSQASGAYIFRPNVGKPIVSRWAQISLVKLTALVQEVHQNFSAWCSQ
 VIRLYKQQRHLELEWTVGPIVPRDDWGKEVISRFDTPMKTKGQFFTDNSGREILKRRDDYRPTWTLNQTE
 PVAGNYYPVNTRIYITDGMQLTVLTDRSQGSSQLQDGSLELMVHRRLLVDDRGVSEPLETDTGDKVR
 GRHLVLLSSVSDAAARHRLLAEQEVLAPQVVL SLGGSSPYHSRATPKTQFSGLRQELPPQVHLLTLARWG
 PKMLLLRLEHQFALKEDSDRNLSSPVTLNVQNLFQFTFINYLQETTLAANQPLSRASRLKWMNTNGPTSF
 PEPKLDPTSVTLKPMERTFLASVQWQEHKPA

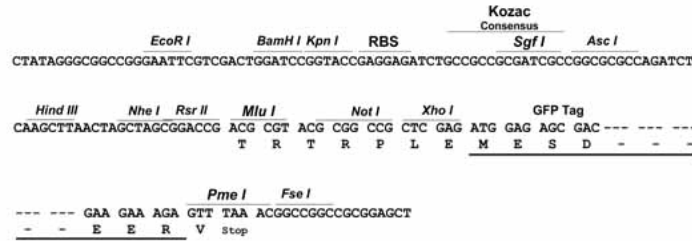
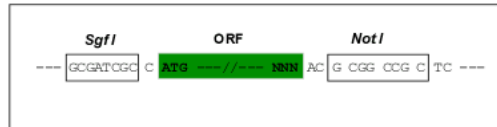
TRPLE - GFP Tag - V

Restriction Sites:

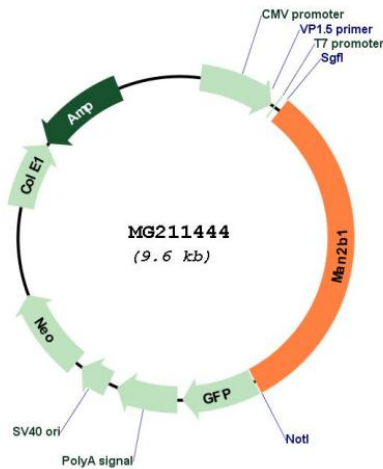
Sgfl-NotI

Cloning Scheme:

Cloning sites used for ORF Shutting:



Plasmid Map:



ACCN: NM_010764

ORF Size: 3039 bp

OTI Disclaimer: The molecular sequence of this clone aligns with the gene accession number as a point of reference only. However, individual transcript sequences of the same gene can differ through naturally occurring variations (e.g. polymorphisms), each with its own valid existence. This clone is substantially in agreement with the reference, but a complete review of all prevailing variants is recommended prior to use. [More info](#)

OTI Annotation:	This clone was engineered to express the complete ORF with an expression tag. Expression varies depending on the nature of the gene.
Components:	The ORF clone is ion-exchange column purified and shipped in a 2D barcoded Matrix tube containing 10ug of transfection-ready, dried plasmid DNA (reconstitute with 100 ul of water).
Reconstitution Method:	<ol style="list-style-type: none">1. Centrifuge at 5,000xg for 5min.2. Carefully open the tube and add 100ul of sterile water to dissolve the DNA.3. Close the tube and incubate for 10 minutes at room temperature.4. Briefly vortex the tube and then do a quick spin (less than 5000xg) to concentrate the liquid at the bottom.5. Store the suspended plasmid at -20°C. The DNA is stable for at least one year from date of shipping when stored at -20°C.
RefSeq:	NM_010764.2 , NP_034894.2
RefSeq Size:	4326 bp
RefSeq ORF:	3042 bp
Locus ID:	17159
UniProt ID:	O09159
Cytogenetics:	8 41.55 cM
Gene Summary:	Necessary for the catabolism of N-linked carbohydrates released during glycoprotein turnover.[UniProtKB/Swiss-Prot Function]