

## Product datasheet for **MG211440**

### **Iars2 (BC052403) Mouse Tagged ORF Clone**

#### Product data:

Product Type:	Expression Plasmids
Product Name:	Iars2 (BC052403) Mouse Tagged ORF Clone
Tag:	TurboGFP
Symbol:	Iars2
Synonyms:	MGC63429
Mammalian Cell Selection:	Neomycin
Vector:	pCMV6-AC-GFP (PS100010)
E. coli Selection:	Ampicillin (100 ug/mL)
ORF Nucleotide Sequence:	>MG211440 representing BC052403 Red=Cloning site Blue=ORF Green=Tags(s)

TTTTGTAATACGACTCACTATAGGGCGGCCGGGAATTCGTCGACTGGATCCGGTACCGAGGAGATCTGCCGCC**CGATCGCC**

ATGCACTGGGGGCTGTGCCCTCGCGGGCCCGGGCGGGCGGTCGCCCGGCTGGGAGCTTCTGGGGC  
CAGCCCGTTTGCCAGCCGCTAGGGTGTCTGGGGATGACGAGGAGGCTCGTGGTACGATCCGTGGCCGG  
GGCGGACAGCCCCAGAGCAGCTCGAAAGGCGGCAGATACCGTGACACGGTGTCTGCTGCCGAGACCAGC  
TTCCCGATGAAGCTGCTGGGCCCGCAGCAGTCCGACATGGAGCTGGAGATCCAGCAGAAATGTGGCTTTT  
CAGAGCTTTATCCTGGCAAAGAGAAAAGTAAAGACGGAATTTGCCTTCATGACGGCCTCCTTA  
TGCCAACGGTGACCCTCATGTTGGGCATGCCCTGAACAAGATTTGAAAGACATTGCCAATCGATTCCAT  
ATGATGAGAGGTTCCAAGGTACACTTTGTGCCTGGCTGGGATTGCCATGGCTTGCCATTGAAACAAAAG  
TGTTATCAGAGCTCGGTGTAGATGCCAGAGTCTTTCAGCCATGGAGATCAGGGAGAAAGCCAGATCATT  
TGCTCAGGCAGCCATTGAAAAGCAGAAATCGGCCTTTGTCCGCTGGGGAGTGATGGCAGACTGGAATAAC  
TGCTATTACACATTTGACCCAAAGTACGAAGCCAAGCAGCTGAGAGTATTCTACCAAATGTATGAGAAGG  
GCTTGGTTTATCGATCTTACAAACAGTATATTGGTCTCCCTCATCAAGGACTGCGTTGGCTGAAGCAGA  
GCTTGAATACAACCCTGAGCATGTCAGTCGGTCGATACGTAAGATCCCCCTCCTGAGACCTCCTCCG  
AAGTTGGAGTCTTTACAGATGCCTCATCCCCTGTTAGCGTTTTAGTTTGGACCACCCAGCCTTGGACAA  
TTCCCGCCAACAGGCAATTTGCTATATGCCAGAGGCAAAGTATGCTGTGGTGAATGTTCTGCCTCTGG  
GCACCTCTACATCCTGGCTGAAGATAAAAATAGCACCTGTGCTTCTGCCTTGAAACAACATTTGATGTT  
GTTGCAGATTTTCAGGTGTGGATCTGGAAGGTGGCACTTGTAGTCACCCTTTAACTCCCATAAAGTGT  
CTCCTCTTTTACCTGCTACCCACGTGACTATGGCCAAAGGAACAGGGTTGGTTCACACAGCCCCAGCTCA  
CGGTATGGAAGATTACAGCGTAGCATCTCAGCACAGCCTCCCTATGGACTGTTTGTAGTGAAGGCGGA  
ATGTTACCGATGCCGAGGCCCTGAATTCAGAACAAAGGCTGTACTTAAAGAAGGAACAGATGTGGTTA  
TAAAGATGCTTCAAGCTACCAAGAATGTGTTGAAAGAAGAGAACATTGTGCACAGCTATCCCTGTGACTG  
GAGAACTAAGACACCCGTGCTGATTCGAGCCAGCAAGCAGTGGTTTGAATATCACGGACATCAAGGCT



[View online >](#)

GCAGCTAAGGAGTCGTTGAAGACGGTGAAGTTCATTCCTCCGGAGCCGCACTGAACAGCATGACGGACATGC  
 TGGACAGACGGCCGACTGGTGCATATCCCGGCAGAGAGTCTGGGGGGTCCCATTCTGTGTTTCATCA  
 TAAGACAAAAGATGAATATTTGATCAACAGCCAAACCACTGAGCATATTATTAACCTCGTCGAGCAGCAC  
 GGCAGTGATGTGTGGTGGACCCTCCCTGCTGAGCAGCTTCTCCCGCAGAAGTCTAGCTCAGGCTGGTG  
 GCCCTGGGGCTTTGGAATACGCGCCAGGGCAGGACATTTGGACATCTGGTTTGACAGTGGAACTTCATG  
 GTCTTGTGTTCTTCAAGACACGACAGCAGAGGGCAGACTGTACCTGGAGGGAAAGGACCAGCTCGGGGGC  
 TGGTCCAGTCTTCTTACTAACAAGTGTGGCCACCAGGTCAAAGCACCTTTCCAGGACAGTGATGGTTC  
 ATGGATTTACACTTGGAGAAAAAGGAGAAAAAGATGTCCAAGTCCCTCGGGAATGTCATTAATCCTGACAC  
 TATCATCAGTGGAGGAAAAGACCACAGCAAAGAACCCTCCCTACGGAGCTGACATCCTGCGCTGGTGATA  
 GCTGAGTCCAATGTCTTACGGAGGTGACCATTGGCCCTCTGTACTCTCTGCTGCCAGAGATGACATCA  
 GCAAGCTCAGAAACACTCCGCTTTCTTGGGAAATTTGACCGGTTTTAACCCGAGACAGATTCTGT  
 TCCCGTGAAGAATATGTATGTCATAGACCAGTATATGCTGCCTAATTCAGGATTTTGCACAAAGATT  
 ACTGACTCATACAACAGTATGACTTTGGGAAAGTTGTCAGGCTGTTGAAAGCCTTACACCAGAGAAC  
 TGTCAGCTTTTACTTCAGCATAGTCAAGGATAGGCTCTACTGCGAAAACGAGAAGGATCCCAAGCGCCG  
 CTCGTGTCAGACAGCATTGGCAGAAATTTGGATGTGTTGGTCCGTGCTTTTGCCTTCTTCTCTCAC  
 TTGGCAGAAGAGGTGTTTCAGCACATCCCTATGTTACAGAACCAAGAGTGTTTTTCGCACTGGCTGGA  
 TTAATACAAGCTCTATTTGGAAGAAGCCAGGACTGGAGGAGGCAGTGGAAAGTGCCTGCGCCATGAGGGA  
 CTCCTTTCTTGGCAGCATCCCTGGCAAAAATGCTGCTGAGTACGAGGTGTCATAGTGATCGAGCCAGGG  
 CTGCTGTTTGAGATCATGGAGATGCTCCAAGCTGAGGAGACCTTAGCACGTCTCAGCTGAATGAGCTGA  
 TGATGGCTTCCAGACGACATTGCTGGCTCAGGAGCCACGGGAAAGAAGTGCAGGTGACATTGAGCTCAC  
 GGGGACATTGTCATCAATCTAGAAGGTGGTGCATTGCTGAGGAGTCTTCATATAAAGTATTGTGGTA  
 CCGACTGCCAGAGAGAAGTGCCTCGATGTTGGAAGCATACCTCTGAGACTGCAGACGCTCTCTGTCTC  
 GGTGTGCAGAGGTCAATTGGTGCAAAG

ACGCGTACGCGGCCGCTCGAG - GFP Tag - GTTTAA

**Protein Sequence:**

>MG211440 representing BC052403  
 Red=Cloning site Green=Tags(s)

MHWGLCPRGPAAAVAAGSFWGPRLPSRLGCLGMTRRLVVRVAVAGADSPQSSSKGGRYRDTVLLPQTS  
 FPMKLLGRQQSDMELEIQKCGFSELYSWQRERKVKTEFLHDGPPYANGDPHVGHALNKILKDIANRFH  
 MMRGSKVHFVPGWDCHGLPIETKVLSELGVDAQSLSAMEIREKARSFAQAAIEKQKSAFVRVGMADWNN  
 CYYTFDPKYEAKQLRVFYQMYEKGLVYRSYKPVYWSPSSRTALAEAELEYNPEHVSRSIYVRFLLRPPP  
 KLESLTDASSPVSVLVWTTQPWTIPANQAICYMPEAKYAVVKCSASGHL YILAEDKIAPVASALETTFDV  
 VAAFSGVDLEGGTCSHPLTPDKVSPLLPATHVTMAKGTGLVHTAPAHGMEDYSVASQHS LPMDCLVDEGG  
 MFTDAAGPELQNKAVLKEGTDVVIKMLQATKNVLKEENIVHSYPCDWRKTPVLIRASKQWFVNITDIKA  
 AAKESLKTVKFIPGAALNSMTDMLDRRPYWCISRQRVWGVPIPVFHHKTKDEYLINSQTTEHIKLV EQH  
 GSDVWWTLPAEQLLPAEVL AQAGPGALEYAPGQDILD IWFDSGTSWSCVLQDTQQRADLYLEK DQLGG  
 WFQSSLLTSVATRSKAPFRTVMVHGFTLGEKGEKMSKSLGNVINPDTIISGGKDHSKEPPYGADILRWWI  
 AESNVFTEVTIGPSVLSAARDDISKLRNTRLLGNLTGFNPETDSVPVKNMYVIDQYMLHLIQDFATKI  
 TDSYKQYDFGKVVRLKAFYTRLESSFYFSIVKDRLYCENEKDPKRRSCQTALAEILDVLRFAFAPILPH  
 LAEEVFQHIPPVTEPKSVFRTGWINTSSIWKKPGLLEEAVESACAMRDSFLGSI PKNAEYEVIIIVIEPG  
 LLFEIMEMLQAEETSSTSQLNELMMASQTLLAQEPRERTAGDIELTGTFVINLEGGDIREESSYKIVIV  
 PTAREKCPRCWKHTSETADALCPRCAEVIGAK

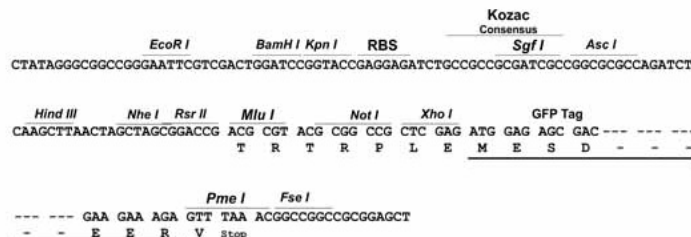
TRTRPLE - GFP Tag - V

**Restriction Sites:**

Sgfl-MluI

**Cloning Scheme:**

Cloning sites used for ORF Shutting:



ACCN: BC052403

ORF Size: 3038 bp

OTI Disclaimer: The molecular sequence of this clone aligns with the gene accession number as a point of reference only. However, individual transcript sequences of the same gene can differ through naturally occurring variations (e.g. polymorphisms), each with its own valid existence. This clone is substantially in agreement with the reference, but a complete review of all prevailing variants is recommended prior to use. [More info](#)

OTI Annotation: This clone was engineered to express the complete ORF with an expression tag. Expression varies depending on the nature of the gene.

Components: The ORF clone is ion-exchange column purified and shipped in a 2D barcoded Matrix tube containing 10ug of transfection-ready, dried plasmid DNA (reconstitute with 100 ul of water).

Reconstitution Method:

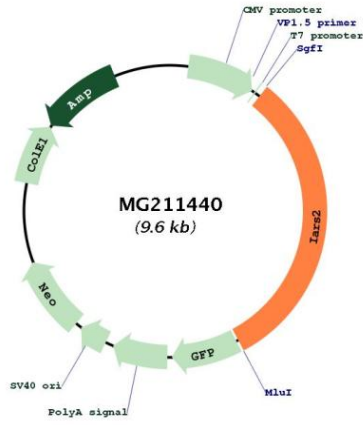
1. Centrifuge at 5,000xg for 5min.
2. Carefully open the tube and add 100ul of sterile water to dissolve the DNA.
3. Close the tube and incubate for 10 minutes at room temperature.
4. Briefly vortex the tube and then do a quick spin (less than 5000xg) to concentrate the liquid at the bottom.
5. Store the suspended plasmid at -20°C. The DNA is stable for at least one year from date of shipping when stored at -20°C.

RefSeq: [BC052403](#), [AAH52403](#)

RefSeq Size: 3499 bp

RefSeq ORF: 3038 bp  
 Locus ID: 381314  
 Cytogenetics: 1 H5

**Product images:**



Circular map for MG211440