

## Product datasheet for **MG211439**

### Gart (NM\_010256) Mouse Tagged ORF Clone

#### Product data:

Product Type:	Expression Plasmids
Product Name:	Gart (NM_010256) Mouse Tagged ORF Clone
Tag:	TurboGFP
Symbol:	Gart
Synonyms:	Gaps; Prgs
Mammalian Cell Selection:	Neomycin
Vector:	pCMV6-AC-GFP (PS100010)
E. coli Selection:	Ampicillin (100 ug/mL)
ORF Nucleotide Sequence:	>MG211439 representing NM_010256 Red=Cloning site Blue=ORF Green=Tags(s)

TTTTGTAATACGACTCACTATAGGGCGGCCGGAATTCGTCGACTGGATCCGGTACCGAGGAGATCTGCC  
GCC**CGATCGCC**

ATGGCAGCCCGAGTTCTTGTTCATCGGTAGCGGGGAAGGGAACATACCCTGGCCTGGAAGCTCGCACAGT  
CTCCTCAGGTCAAGCAAGTGTGGTTGCCCCAGGAAACGCAGGCACTGCGTGCCTGGGAAGATCTCCAA  
TGCTGCTGTCTGTCAATGATCACAGTGCCCTCGCTCAGTTCTGCAAGGATGAAAAGATTGAAGTCTGTA  
GTTGTCCGACAGAGGCCCTCTGGCTGCAGGAATTGTTGGGACCTGACCTCTGCAGGAGTACGATGCT  
TTGGCCCCACAGCACAAGCAGCTCAATTAGAGTCCAGTAAGAAGTTTGCTAAAGAGTTTATGGACCGCCA  
TGAATCCCAACTGCACAGTGGAGAGCATTACCAACCCTGAAGATGCCTGCAGCTTTATTACAAGCGCG  
AACTTTCCTGCTTTGGTTGTGAAGGCCAGTGGCCTTGCAGCAGGGAAGGGAGTGATTGTGGCCAAGAGCC  
AAGCGGAGGCTGCAGAGCTGTACAGGAGATCATGCAAGAAAAGTCTTTCGGAGCAGCTGGTGAACAGT  
TGTTGTGGAAGAGTTTCTGGAAGGGGAAGAAGTGTCTTGCCTTTGCTTCACTGACGGGAAGACGGTGGCC  
GAAATGCCCCAGCACAAGACCAATAAGCGATTGCTGGATGGAGACGAAGGCCCAACACCGGGGGGATGG  
GAGCCTACTGCCAGCACCTCAGGTTTCTAAGGACTTGTAGTAAAAATTAAGAACAATTTCTTCAGAG  
AGCAGTAGACGGCATGCAGCAGGAGGGTGCGCCGTACACAGGAATTCTTTATGCTGGTATAATGCTGACC  
AAAGATGGCCAAAAGTGTGGAGTTTAAATGGCCGCTTTGGTGATCCGGAATGCCAGGTCATCCTCCCAC  
TTCTTAAAAGTGACCTCTATGAGGTGATGCAGTCCACCTTGGATGGCCTGCTGAGCGCTCTCTGCCTGT  
TTGGCTAGAAAACCACAGTGCCGTAACCGTCGTCATGGCGAGTAAAGGGTACCCTGGAGCCTACACCAAAA  
GGCGTGGAGATTACAGGTTTCTGAGGCCAGGCTTTAGGACTGCAGGTATTCCATGCAGGCACTGCTC  
TTAAAGATGGCAAAGTAGTGACCAGCGGGGCAGGGTCTCACCGTGACAGCTGTCCAGGAAAATCTCAT  
GTCAGCCCTTGTGAGGCCAGGAAAGGACTCGCTGCTCTAAAGTTTGGAGGAGCCATCTATAGAAAGGAC  
ATTGGCTCCGTGCTGTGGCCTTCTCCAGCGGCCAGGGCTTACTTACAAGGACTCCGGAGTAGACA  
TCGCAGCTGAAAATATGCTGGTTAAGAAAATTCAGCCTTAGCAAAGCCACCTCCAGACCAGGCTGCAG  
TGTTGACCTTGGGGCTTTGCTGGTCTTTTATTGAAAGCAGCTGTTTCAAAGATCCTCTTCTGGCC



[View online >](#)

TCTGGAACAGATGGTGTGGGAACTAAACTAAAGATTGCGCAGCTGTGCAATAAGCATGATTCCATCGGGC  
 AGGATCTGGTGGCCATGTGTGTGAACGACATCCTCGCCAGGGAGCAGAGCCCCTTCTTCTTCTGACTA  
 CTTTTCTGTGGGAAGCTCGACCTCAGTACAACGAAGCCGTCATTGCTGGAATTGCTGCAGCTTCCAG  
 CAGGCTGGCTGTGCCCTGCTGGGTGGGAGACAGCAGAGATGCCAACATGTACCTCCTGGAGAGTATG  
 ATCTTGTGGGTTTGTGTTGGTGTATGGAGAGACACCAGAAGCTCCCTCAGCTAGAAAAGGATCACCGA  
 AGGGATGCTGTTATTGGAGTGGCTTCACTGGTCTTACAGCAATGGGTTTACGCTTGTGAGAAAAATC  
 GTGGAGAGGTCTTCGCTCCAATACTCTCCACGACCTGGTGGTGTGGAGATCAGACCTTAGGGGACT  
 TACTTCTAACTCAACCAGGATCTACAGCATTACTGCTGCCATCATACGTTACAGACGTGTCAAAGC  
 TTTTGCTCATATACTGGAGCGGGTGTGAAAAACATCCCCAGAGTCTCCCTCAGAAGTTTGGAGTA  
 GATTTAGATGCCAGCACCTGGAGGGTCCCCAAGGTCTTCTCGTGGCTACAGCAGGAAGGAGAGCTCTCTG  
 AAGAAGAAATGGCCAGGACATCAACTGTGGGATTGGAGCTGCCCTGGTGGTGTCAAAGGACCAGGCCGA  
 GCAGGTTCTGCATGACGTTCCGCGCGGCAGGAGGAAGCCTGGTGTAGGCAGTGTCTGTGCGTGTCT  
 GAAGATCCCCTCGTGTGAGGTTAAGAATCTGATTGAAACCATAACAACGAATGGGTATTGGTGGCAA  
 ATGGCTTCTGAAAAGTAATTTCCCTGTGCAACAAAAGAAGCAAGAGTGGCTGTCTTGATATCTGGAAC  
 AGGGTCGAACCTCCAGGCCTCATAGATAGCACCCGGGATCCCAAGAGCTCTCACATATTGTTCTGTG  
 ATCTCAAACAAAGCCGCTAGCCGGCTTAGACCGAGCTGAGCGAGCTGGTATTCCACACAGGGTAATTA  
 ATCACAATTATATAAAATCGTGTGAGTTTGAACAATGCAAGTACCACGCTCTGGAAGAGTTCTCTGT  
 AGACATCGTCTGTCTTGCAGGGTTCATGAGGATCCTCTCTGGGCCCTTCTGAGAAAATGGGACGGGAAA  
 ATGCTCAACATCCACCCATCCTTGTCCCTTCTTAAAGGTTCAAATGCCACAGCAAGTCTGGGAA  
 CTGGAGTCAACATCACTGGGTGTACCGTACACTTGTGCGTGAAGATGTAGATGCCGGACAAATCATCT  
 GCAGGAAGCTGTCCCTGTGCGGAGGGGTGACACTGTGGCAACGCTGTCTGAACGGGTCAAAGTGGCAGAA  
 CATAAGATCTTCTGCCGCTTTCAGCTGGTGGCCAGCGGGGCTGTGCAGCTGCCAGAAGATGGCAAGA  
 TCCACTGGGCCAAGGAGCAG

ACGCGTACGCGGCCGCTCGAG - GFP Tag - GTTTAA

**Protein Sequence:**

>MG211439 representing NM\_010256  
 Red=Cloning site Green=Tags(s)

MAARVLVIGSGGREHTLAWKLAQSPQVKQVLVAPGNAGTACAGKISNAAVSVNDHSALAQFCKDEKIELV  
 VVGPEAPLAAGIVGDLTSAGVRCFGPTAQAQLESSKKFAKEFMDRHEIPTAQWRAFTNPEDACSFITSA  
 NFPALVVKASGLAAGKGVIVAKSQAEACRAVQEI MQEKSFGAAGETVVVEEFLEGEVSLCFTDGKTVA  
 EMPPAQDHRLLDGDGEPNTGGMGAYCPAPQVSKDLLVKIKNTILQRAVDGMQEGAPYTGILYAGIMLT  
 KDGPVLEFNCRFGDPECQVILPLLKSDLYEVMQSTLDGLLSASLPVWLENHSAVTVVMASKGYPGAYTK  
 GVEITGFPEAQLGLQVFHAGTALKDGVVTSGGRVLTAVQENLMSALAEARKGLAALKFEGAIYRKD  
 IGFRAVAFVLRPRGLTYKDSGVDIAAGNMLVKKIQPLAKATSRPGCSVDLGGFAGLFDLKAAGFKDPLLA  
 SGTGVDGKTKLIAQLCNKHDSIGQDLVAMCVNDILAQGAEPFLFDYFSCGKLDLSTTEAVIAGIAAACQ  
 QAGCALLGGETAEMPNNMYPPEYDLAGFAVGAMERHQKLPQLERITEGDAVIGVASSGLHSNGFSLVRKI  
 VERSSLQYSSPAPGGCGDQTLGDLLLTPTRIYSHSLPIIRSGRVKAFAHITGGGLLENIPRVLPOKFGV  
 DLDASTWRVPKVFVSWLQQEDELSEEEMARTFNCGIGAALVYSKDQAEQVLHVDVRRRQEEAWVIGSVVACP  
 EDSRPRVRVKNLIETIQTNGSLVANGLKSNFPVQKKARVAVLISGTGSNLQALIDSTRDPKSSSHIVLV  
 ISNKAAVAGLDRAERAGIPTRVINHKLKYNRVEFDNAVDHVLVEEFSDIVCLAGFMRILSGPFVRKWDGK  
 MLNIHPSLLPSFKGSNAHEQVLEAGVTITGCTVHFVAEDVDAGQIILQEAVPVRRGDTVATLSERVKVAE  
 HKIFPAALQLVASGAVQLREDGKIHWAKEQ

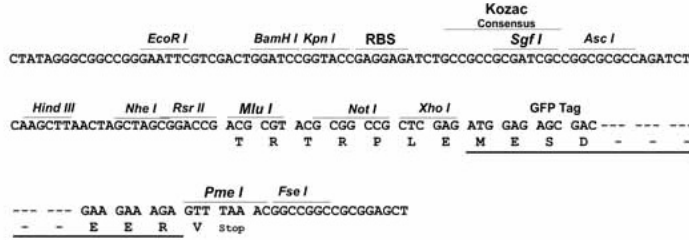
TRTRPLE - GFP Tag - V

**Restriction Sites:**

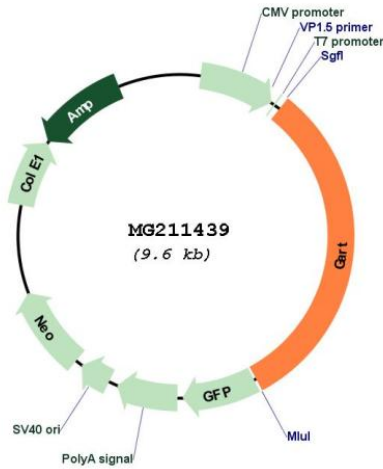
Sgfl-MluI

Cloning Scheme:

Cloning sites used for ORF Shutting:



Plasmid Map:



ACCN: NM\_010256  
 ORF Size: 3030 bp

<b>OTI Disclaimer:</b>	<p>Due to the inherent nature of this plasmid, standard methods to replicate additional amounts of DNA in E. coli are highly likely to result in mutations and/or rearrangements. Therefore, OriGene does not guarantee the capability to replicate this plasmid DNA. Additional amounts of DNA can be purchased from OriGene with batch-specific, full-sequence verification at a reduced cost. Please contact our customer care team at <a href="mailto:custsupport@origene.com">custsupport@origene.com</a> or by calling 301.340.3188 option 3 for pricing and delivery.</p> <p>The molecular sequence of this clone aligns with the gene accession number as a point of reference only. However, individual transcript sequences of the same gene can differ through naturally occurring variations (e.g. polymorphisms), each with its own valid existence. This clone is substantially in agreement with the reference, but a complete review of all prevailing variants is recommended prior to use. <a href="#">More info</a></p>
<b>OTI Annotation:</b>	This clone was engineered to express the complete ORF with an expression tag. Expression varies depending on the nature of the gene.
<b>Components:</b>	The ORF clone is ion-exchange column purified and shipped in a 2D barcoded Matrix tube containing 10ug of transfection-ready, dried plasmid DNA (reconstitute with 100 ul of water).
<b>Reconstitution Method:</b>	<ol style="list-style-type: none"> <li>1. Centrifuge at 5,000xg for 5min.</li> <li>2. Carefully open the tube and add 100ul of sterile water to dissolve the DNA.</li> <li>3. Close the tube and incubate for 10 minutes at room temperature.</li> <li>4. Briefly vortex the tube and then do a quick spin (less than 5000xg) to concentrate the liquid at the bottom.</li> <li>5. Store the suspended plasmid at -20°C. The DNA is stable for at least one year from date of shipping when stored at -20°C.</li> </ol>
<b>RefSeq:</b>	<a href="#">NM_010256.2</a> , <a href="#">NP_034386.2</a>
<b>RefSeq Size:</b>	3329 bp
<b>RefSeq ORF:</b>	3033 bp
<b>Locus ID:</b>	14450
<b>UniProt ID:</b>	<a href="#">Q64737</a>
<b>Cytogenetics:</b>	16 53.18 cM