

Product datasheet for **MG211436**

Tbc1d9 (BC057027) Mouse Tagged ORF Clone

Product data:

Product Type:	Expression Plasmids
Product Name:	Tbc1d9 (BC057027) Mouse Tagged ORF Clone
Tag:	TurboGFP
Symbol:	Tbc1d9
Synonyms:	4933431N12Rik; AI847101; AW490653; C76116
Mammalian Cell Selection:	Neomycin
Vector:	pCMV6-AC-GFP (PS100010)
E. coli Selection:	Ampicillin (100 ug/mL)
ORF Nucleotide Sequence:	>MG211436 representing BC057027 Red=Cloning site Blue=ORF Green=Tags(s)

TTTTGTAATACGACTCACTATAGGGCGGCCGGAATTCGTCGACTGGATCCGGTACCGAGGAGATCTGCC
GCC**CGATCGCC**

ATGAAGGATTTGAACAGGACCGGTCCCTGCCTAACTCAAGAAGAAATCTCCAAAAAAGTATCTGCTC
TGAAACGTGATCTGGATGCCAGAGCGAAGAGCGAGCGATACCGCGCCCTTTCCGGCTGCCCAAAGACGA
AAAGCTAGACGGGCACACTGACTGCACCCTCTGGACTCCATTTAACAAGATGCACATTTGGGTGAGATG
TTCGTCTCCACTAATTACATCTGTTTTACCAGCAAGGAGGAAAACCTCTGCAGCCTCATAATCCACTCC
GGGAAGTAACCATCGTGGAGAAGGCCGACAGCTGCAGTGTGCTCCCCAGCCCTCTGTCCATCAGCACCAG
GAACAGGATGACCTTCTGTTCCGGAAGTGAAGACAGAGACTTCTGGTGCAGAGGATCTCAGATTTCT
TTGAGCAAAACGACTTCTAGGATCTACTCAGACAAAGAGTTTTTCAGGAAGCTGCAACAGCTCAGATGATG
AGGTGTATTCTCGGCCAGCAGCCTCGTTTCTCCAGTCCCAGAGAAGCACAAGCTCGGATGCTGATGG
AGAACGCCCTTTAACCTCAATGGCAACAGTGTCCCTACAGCCACCCAGACCCCTCATGACCATGTACCGG
CGGCGATCTCTGAAGAATCAACCCAAAATGGCCAAAGAGTTTTTGAAGAACAAGCCTGGAAGATTC
ACTTTGCTGAGTATGGGCAGGGAATCTGCATGTACCGCACAGAGAAGACCCGGGAGCTGGTGTGAAGGG
CATCCCAGAGAGCATGCGCGGAGAGCTCTGGCTGCTGCTTTCAGGGGCCATCAATGAAAAGGCCACACAC
CCCGGGTACTACGAGGGCTCGTGGAGAAGTCGATGGGAAAGTACAATCTGGCCACCGAGGAGATTGAGA
GAGACTTACACCGCTCCCTTCCAGAACACCCAGCTTCCAGAACGAAATGGGCATCGCGGCTCTGAGGAG
AGTCTTAAACGGCTTATGCTTTTCGCAATCCCAACATAGGATACTGCCAGGCCATGAACATTGTCACTTCA
GTGCTACTGCTGTATGCCAAAGAGGAGGAGGCCTTCTGGCTGCTTGTGGCCTTGTGTGAGCGCATGCTTC
CCGACTACTACAACACCAGAGTTGTAGGTGCCCTGGTGGACCAGGGAGTCTTCGAGGAGCTGGCTCGAGA
CTATGTCCCGCAGCTGTACGACTGCATGCAGGACCTGGGGGTGATCTCTACCATCTCCCTGTCGTGGTTC
CTCACACTTCTCAGTGTGATGCCATTTGAGAGTGCAGTGGTGGTGTGGACTGTTTCTTCTATGAAG
GAATCAAAGTGATATTTAGCTGGCTCTCGCTGTACTGGATGCCAACGTGGATAAATCTTGAAGTCAA
GGACGATGGAGAGCCATGACTGTTTTGGGAAGGTACCTAGACAGTGTGACCAACAAGACAGCACCTG



[View online »](#)

CCTCCCATCCCCATCTCCACTCCCTGCTCAGTGACGACGTGGGGCCCTACCCTGCCGTGGACATCTTCA
 GACTCATAGGGACGTCTTACGAGAAATTTGAACTATCCGGGCCGATTTGATTGAGCAGATGCGATTCAA
 GCAGAGGCTGAAAGTGATCCAGACCCTGGAGGACACCACAAACGAATGTGGTACGGACCATTGTGACG
 GAGACGTCCTTACCATCGATGAGCTGGAAGAAGTGTACGCTCTTTTCAAGGCTGAGCATCTGACCAGCT
 GCTACTGGGGTGGGAGCAGCAATGCCCTGGACCGACACGACCCAGCCTGCCTTACCTGGAGCAGTACCG
 CATCGACTTTGAGCAGTCAAGGGCATGTTCTGTGCTCTTTCCCTGGGCGTGTGGCACACACTCCGAT
 GTGCTGGCCTCCCGCCTGTTCCAGCTGTTAGATGAGAATGGAGACTCCTTGATTAACCTCCGAGAGTTCG
 TCTCTGGGCTGAGTGTGCATGCCATGGGGACCTCACAGAGAACTCAAACCTCCTGTACAAGATGCACGT
 CTTGCCTGAGCCATCCTGTGATCAAGATGAGCCTGACTCCGCCTTTGAAGCCACTCAGTACTTTTTTGA
 GACATCACCCAGAATGCACACATGTTGTTGGCTTGGACAGTAGAGGCAAGCAGAGTGGCGACGACGGCT
 TCGTCACAGTGAAGCAGGACAGAGGAAAAGGGCAAATCTCAAGAAAACCGTAATTACCTAAA
 ACTCTGGACTGCAGAAAATAAGTCTAAGTCAAAAAGTCCAAAGGATTTGCCAAGCTGAACCAGGGGCG
 TTTATTGAGCTCTGTAAGACCATGTACAACATGTTTCAGTGAAGACCCCAATGAGCAGGAGCTGTACCATG
 CCACAGCTGCGGTGACCAGCCTCCTGCTGGAGATCGGAGAGGTTGCAAGTCTTCACTACTCAGCCGGC
 AAAGGAAGATGCAGTTCCTGGACCACCTCGCGCCAGGCCATCCCAGGCATGCTCTTCCCTAAGAAGGGG
 TCAGCCAGTCTATGTGGTGGAGTCCACAGAGCCACTCACAGCTAGCCTGGCAGTGGACAGTGAAGGAGC
 ACTCCCTGGGAGGGCAGATGGAGGACATTAAGTGGAGGACTCCTCACCCAGGGACAACGGGGCCTGCTC
 CTCATGTTGATCTCCGATGATGACACCAAGGATGACAGCTCCATGTCATCCTACTCGGTGCTGAGCGCC
 GGCTCCCACGAGGAGGACAACTGCACTGTGAGGACATTGGAGAGGACACAGTCTGCTGCGTAGCAGTC
 AGGGTAGAGCCACCCTGCCAGGAGCAGCAGCCTGGACCGGGACTGGGCCATCACCTTTGAGCAGTTCCT
 GGCCTCGCTTTGACGGAGCCCGCTCTCGTGAGGTAAGTGAAGCCAGTGTGCATGATGGCCAGGGTC
 ACCAGTGCAGAAGAATCCGATGATGGCAAGCCCTCACCTCAGCCAGTACTGAAATCTCTGCCC
 TGTCCGGC

ACGCGTACGCGGCCGCTCGAG – GFP Tag – GTTTAA

Protein Sequence:

>MG211436 representing BC057027
 Red=Cloning site Green=Tags(s)

MKDLNRTGPCLNSRRNLPKKVSAKRDLDARAKSERYRALFRLPKDEKLDGHTDCTLWTFPNKMHILGQM
 FVSTNYICFTSKEENLCSLIIPREVTIVEKADSCSVLPSPLSISTRNRMFLFANLKDRDFLVQRISDF
 LQQTTSRIYSDKEFSGSCNSSDDEVYSRPSLVSSSPQRSTSSDADGERPFNLNGNSVPTATQTLMTMYR
 RRSPEEFNPKLAKEFLKEQAWKIHFAYEQGICMYRTEKRELVLKGIPEMRGELWLLLSGAINKATH
 PGYYEGLVEKSMGKYNLAATEIERDLHRSLPEHPAFQNMGIAALRRVL TAYAFRNPNIQYQAMNIVTS
 VLLLYAKEEEAFWLLVALCERMLPDYYNTRVVGALVDQGVFEELARDYVPLQYDCMQDLGVIISTISLW
 LTLFLSVMPPFESAVVVVDCFFYEGIKVIFQLALAVLDANVDKLLNCKDDGEAMTVLGRYLDVSTNKDSTL
 PPIPHLHSLSDDVGPYPAVDIFRLIGTSYEKFGTIRADLIEQMRFKQRLKVIQTLEDTTKRNVRTIVT
 ETSFTIDELEELYALFKAHLTSCYWGGSSNALDRHDPSPYLEQYRIDFEQFKGMFVLLFPWACGTHSD
 VLASRLFQLLDENGDSLINFREFVSGLSAACHGDLTEKLLKLYKMHVLPSPCDQDEPDSAFEATQYFFE
 DITPECTHVVGLDSRGKQSADDGFVTVSLKQDRGKRANSQENRNYLKLWTAENKSKSKTAKDLPKLNQGG
 FIELCKTMYNMFSEDPNEQELYHATAAVTSLLEIGEVGKFFITQPAKEDAVPGPPCGQAIIPGMLFPKKG
 SSQSYVVESTEPLTASLAVDSEEHSLLGGQMEDIKLEDSSPRDNGACSSMLISDDDTKDDSSMSSYSVLSA
 GSHEEDKLHCEDIGEDTVLRSSQGRATLPRSSSLDRDWAITFEQFLASLLTEPALVRYFDKPVCMMARV
 TSAKNIRMMGKPLTSADYEISALSG

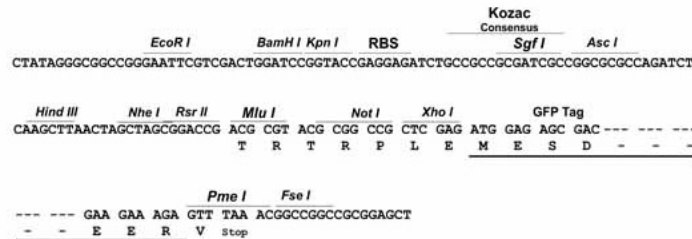
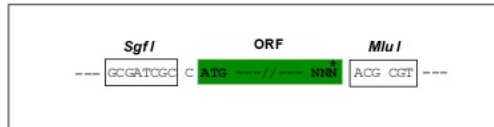
TRTRPLE – GFP Tag – V

Restriction Sites:

Sgfl-MluI

Cloning Scheme:

Cloning sites used for ORF Shutting:


ACCN: BC057027

ORF Size: 3018 bp

OTI Disclaimer: The molecular sequence of this clone aligns with the gene accession number as a point of reference only. However, individual transcript sequences of the same gene can differ through naturally occurring variations (e.g. polymorphisms), each with its own valid existence. This clone is substantially in agreement with the reference, but a complete review of all prevailing variants is recommended prior to use. [More info](#)
OTI Annotation: This clone was engineered to express the complete ORF with an expression tag. Expression varies depending on the nature of the gene.

Components: The ORF clone is ion-exchange column purified and shipped in a 2D barcoded Matrix tube containing 10ug of transfection-ready, dried plasmid DNA (reconstitute with 100 ul of water).

Reconstitution Method:

1. Centrifuge at 5,000xg for 5min.
2. Carefully open the tube and add 100ul of sterile water to dissolve the DNA.
3. Close the tube and incubate for 10 minutes at room temperature.
4. Briefly vortex the tube and then do a quick spin (less than 5000xg) to concentrate the liquid at the bottom.
5. Store the suspended plasmid at -20°C. The DNA is stable for at least one year from date of shipping when stored at -20°C.

RefSeq: [BC057027.1](#)
RefSeq Size: 4453 bp

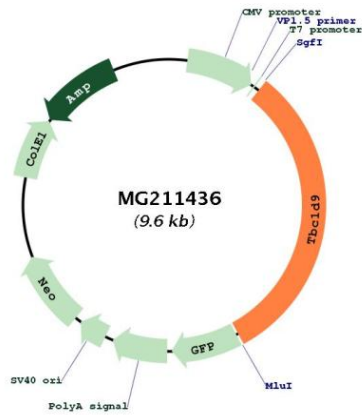
RefSeq ORF: 3020 bp

Locus ID: 71310

Cytogenetics: 8 C2

Gene Summary: May act as a GTPase-activating protein for Rab family protein(s).[UniProtKB/Swiss-Prot Function]

Product images:



Circular map for MG211436