

Product datasheet for **MG211418**

Arhgap45 (NM_027521) Mouse Tagged ORF Clone

Product data:

Product Type:	Expression Plasmids
Product Name:	Arhgap45 (NM_027521) Mouse Tagged ORF Clone
Tag:	TurboGFP
Symbol:	Arhgap45
Synonyms:	6330406L22Rik; AW539505; Ha-1; Hmha1
Mammalian Cell Selection:	Neomycin
Vector:	pCMV6-AC-GFP (PS100010)
E. coli Selection:	Ampicillin (100 ug/mL)



[View online »](#)

ORF Nucleotide Sequence:

>MG211418 representing NM_027521
 Red=Cloning site Blue=ORF Green=Tags(s)

TTTTGTAATACGACTCACTATAGGGCGGCCGGAATTCGTCGACTGGATCCGGTACCGAGGAGATCTGCC
 GCC**CGGATCGCC**

ATGTGTGTCTGTGGGACTCTGCATCCAGCGCTGGACCATGACCCCTGTGCTGCCAGACTCGCGCCCGAG
 ACCTTCTCGAGGCCCGCCGGCCACTGGCCCATGAGTGCCTGGGTGAAGCTCTGCGAGTCATGCGCCAGGT
 CATCTCCAGATACCCACTCCTCAACACCGTGGAGACACTCACAGCCGCTGGTACACTCATTGCCAAGGTC
 AAAGCCTTTCATTATGAATGCAACAATGAATCAGATAAGAGGGAATTTGAGAAGGCTCTGAAAACCATG
 CGGTGTCTTTCAGCTGCACTGTGTCGAGTTCCTTTGGGTGAAGTGGACAGCAGTACTCTCTGGCGGT
 GCCTCCGGGGGACCCAGCCAGTCCATGGAGAACCTTTATGGGGTGGCAGGAGGGGCCCCACATAAC
 GTGGAGGAATGTGAAGAAGTTGCCTGCCCCCGAAGAGTGGACATGCTTCTGCAGCGATGCGAAGGGG
 GTGTGGACGCTGCACTGCAGTATGCAAAAGACATGGCCAGGTACATGAAGGACCTCATCAGTACCTGGA
 GAAGAGGACCACCTGGAGATGGAATTCGCCAAAGGTCTCCAGAAGGTTGTCCACAACCTGCAGACAGAGC
 GTCACACACGAGCCCATGCCTCTCTTGTCCATCTACTCACTGGCCCTGGAACAAGATTTGGAGTTTG
 GCCACGGCATGGTGCAGGCAGCGGGCACACTGCAGACCCAGACCTTCATGCAGCCCTGCAGCTGCGGGC
 GTTGGAGCATGAGAGGCGCAGGAAGGAGATCAAAGAATCTTGGCATCGAGCACAGAGGAAGCTGCAAGAG
 GCAGAGGCCAACCTGCGCAAGGCCAAACAGGGCTACAAACAACGCTGTGAAGACCACGACAAGGCCCGGC
 TCCAGGTGGCCAAAGGCTGAGGAGGAACAACAGGGCACAGGCCAGGGCGCAGGGACTGCGGCCCTAAGGC
 CCTGGACAAGAGGGCGCAGACTGGAGGAAGAGGCCAAAAACAAGGCCGAGGAGGCCATGGCCACTTACCGC
 ACATGCGTGGCAGACGCAAGACACAGAAGCAGGAGCTGGAGGACACAAGGTGACTGCGCTGCGGCAGA
 TTCAGGAGGTCATCAGGCAGAGTGATCAGACCATTAAGTCGGCCACCATCTCTACTACCTGCTGAGTCA
 CATGCAGACAGCACCCGCTGCCCGTGAACCTTCAGATGCTGTGCGAGAGCAGCAAACCTATATGACCCGGGC
 CAACAGTACGCATCTCACGTGCGTCAGCTGCAGAGAGGCGAGGAGCCGGACGTGCGCTACGACTTTGAGC
 CTTATGTCTCTAACAACCTCTGGTCCCCAATCATGCGTACACGGAAGGGCAGCTTCAACCCTGGTATGC
 TTCAGGACCCGAAGCTGCTGGTAGTCCCCCGAGGAAGTGGCACCTCTGAGGCAGCACCAACAAGGAC
 CACAGGGGGGACGAGGTCACCAGGTTCAAGTCTGGCCATCTCCATCTCAGACACCGAAGTTGGTC
 TGGACACCAGCTCAGGGGACTTGAAGAAGTTCGATCGAACATCTCCAGTGGGACGATGCATCCAGTGA
 GGAGCTGGGGATCAGGAAGCTGGCTTGGTAGCTTCCGCTTTGATTGAGCTGACCTCAATGGCATGGAC
 CCCGAGTTACCTGTGGCCATGCCAGTGGACCCTTCCGCTGTGGGATTGTCCAAGGCAGCCCGCACAC
 ACCGACTTCGCAAACCTGCGCACGCCAGCCAAGTGCAGAGAGTGTAAACAGCTATGTGACTTCCAAGGAGC
 TGAATGTGAAGAGTGTGCTGGCTTGTCAAAAAAGTGTGGAGACCCCTGGCCATCCAGTGTGGCCAC
 AAGAAGCTTCAGGGCCGCTGCAGCTCTTTGGACAAGACTTCAGCCAGGCAGCCCTCAGCACCCCTGATG
 GGGTGCCTTTCATTGTCAAAAAATGTGTCTGTGAGATTGAGCGGCGGGCAGCTGCACACCAAGGGGATCTA
 CCGGGTCAATGGCGTGAAAACGCGTGTGGAGAAGCTGTGCCAGGCTTTTGAAGATGGCAAAGAGTTGGTG
 GAGTTGTCACAGGCCTCACCCACGACATCAGCAACGCTCTAAAGCTATACCTGCGGCAGCTACCGGAGC
 CCCTTATCTCTTTTCGCTTCTACCATGAGCTGGTGGGACTAGCTAAGGACAGCCTAAAGGCCGAAGCCGA
 AGCTAAGGCAGCAGCCGGGGTCCGAGGTTGGTCCGAGAGTGAGGCTGCAACCTGGCTATGGTGGGC
 CGCCTGCGTGAGCTCATGCAGGATCTGCCAGCCGAAAACCGGGCCACACTCTTATACCTGCTGAAGCACT
 TGCGAAGGATCGTGAAATGGAGCAGGATAACAAGATGACCCCTGGGAACCTGGGCATCGTTTTCGGGCC
 CACACTGTTGCGGCTCGACCCACTGACGCCACCGTGTCCCTCTCTTCTGCTGGTGGATTATCCCCACCAG
 GCCCGAGTTATTGAGACTCTGATTGTCCACTACGGCCTGGTCTTTGAGGAGGAGCCAGAGGAGGCGCCTG
 GCAGCCAGGAGGGGGCATCCACCAGTGTGGCCAGCTGGAGTCTGCTGAGGGCATTGTCTTCCCCCTGCA
 GGAGGAGCAGAGGACGGAAGCCGAGAATCTCACGCGCATCTAATGACTCGGACTCTGAGCTGGAAGAC
 GCTTCTGACCCCTTTCATCTCGGACGCCAGTGTCTACACCGCTCAGTTTCTGGAGCAGACCGAGG
 CAGGCCTGGAGGAAGTCCCAGAGCCATAGTGGCAGTGAGAACAGCTGGAGGGTGGAGATGGAGCCCC
 GGGTCCGTGGCTGTGCACTTCAACACCAACCAGTCCAACAACACATCACGGGCCCTCTGCCACCATG
 CGGCTCCGAGGAGGGCAGATCACAGGTGGCACCAGTCAGGAGCGGCAGCCACAGTTCGTC

AG**CGGACCG**ACGCGTACGCGGCCGCTCGAG - GFP Tag - GTTTAA

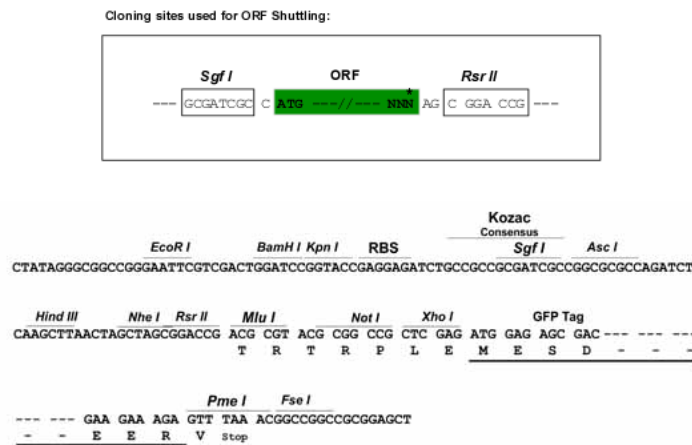
Protein Sequence: >MG211418 representing NM_027521
 Red=Cloning site Green=Tags(s)

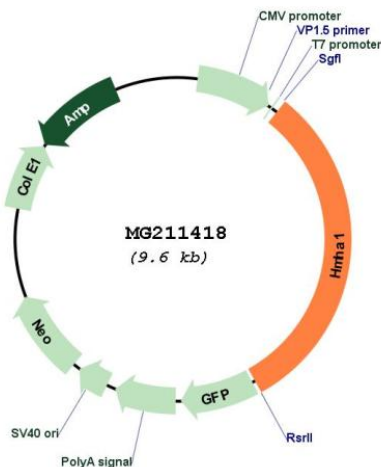
MCVCGTLHPALDHDPLCCQTRARDLLEARRPLAHECLGEALRVMRQVISRYPLLNTVETLTAAGTLIAKV
 KAFHYECNNSDKREFEKALETIAVSFCTVSEFLLGEVDSSTLLAVPPGDPSQSMENLYGAGTEGPPHN
 VEECEEGLPPEEVDMLLQRCEGGVDAALQYAKDMARYMKDLISYLEKRTTLEMEFAKGLQKVVHNCRQS
 VTHEPHMPLLSIYSLALEQDLEFGHGMVQAAGTLQTQTFMQPLTLRRLEHERRRKEIKESWHRAQRKLQE
 AEANLRKAKQGYKQRCEDHDKARLQVAKAEEEQQGTGPGAGTAASKALDKRRRLEEEAKNKAEEMATYR
 TCVADAKTQKQELDTKVTLRQIQEVIRQSDQTIKSATISYYQLMHMQTAPLPVNFQMLCESSKLYDPG
 QQYASHVRQLQRGEEDVRYDFEPYVSNNSWSPIMRTRKGSFNPGDASGPEAAGSPPEEGGTSEAAPNKD
 HRGGRGHQVHKSWPISISDTEVGLDTSSGDLKKFDRTSSSGTMSSEELGDQEAGLVASAFDSADLNGMD
 PELPVAMPSPFRHVGLSKAARTHRLRKLRTPAKCRECNSYVYFQGAEECECLACHKKCLETIAIQCGH
 KKLQGRLLQFGQDFSQAALSTPDGVPIVKKCVCEIERRALHTKGIYRVNGVKTRVEKLCQAFENGKELV
 ELSQASPHDISNVLKYLRLPEPLISFRFYHELVLAKDSLKAEAEAKAASRGRQGGSEASEATLAMVG
 RLRELMQDLPAENRATLLYLLKHLRRIVEME QDNKMTPGNLGIVFGPTLLRPRPTDATVSLSSLDVDPHQ
 ARVIETLIVHYGLVFEEPEEAPGSQEGASTQCGQLESAEGIVFPLQEEAEDGSRESHAANSNDSELED
 ASDPLSSSDASALHRLSFLEQTEAGLEEGPQSHSGSEEQLEGEDGAPGPWLCHFNTNQSNNTSRAPLPTM
 RLRGGQITGGTSQERQPQFV

SGPTRRRLE - GFP Tag - V

Restriction Sites: SgfI-RsrII

Cloning Scheme:



Plasmid Map:


ACCN: NM_027521

ORF Size: 3000 bp

OTI Disclaimer: The molecular sequence of this clone aligns with the gene accession number as a point of reference only. However, individual transcript sequences of the same gene can differ through naturally occurring variations (e.g. polymorphisms), each with its own valid existence. This clone is substantially in agreement with the reference, but a complete review of all prevailing variants is recommended prior to use. [More info](#)

OTI Annotation: This clone was engineered to express the complete ORF with an expression tag. Expression varies depending on the nature of the gene.

Components: The ORF clone is ion-exchange column purified and shipped in a 2D barcoded Matrix tube containing 10ug of transfection-ready, dried plasmid DNA (reconstitute with 100 ul of water).

Reconstitution Method:

1. Centrifuge at 5,000xg for 5min.
2. Carefully open the tube and add 100ul of sterile water to dissolve the DNA.
3. Close the tube and incubate for 10 minutes at room temperature.
4. Briefly vortex the tube and then do a quick spin (less than 5000xg) to concentrate the liquid at the bottom.
5. Store the suspended plasmid at -20°C. The DNA is stable for at least one year from date of shipping when stored at -20°C.

RefSeq: [NM_027521.3](#), [NP_081797.1](#)

RefSeq Size: 3480 bp

RefSeq ORF: 3003 bp

Locus ID: 70719

UniProt ID: [Q3TBD2](#)

Cytogenetics: 10 C1

Gene Summary:

Contains a GTPase activator for the Rho-type GTPases (RhoGAP) domain that would be able to negatively regulate the actin cytoskeleton as well as cell spreading. However, also contains N-terminally a BAR-domain which is able to play an autoinhibitory effect on this RhoGAP activity.[UniProtKB/Swiss-Prot Function]