

Product datasheet for **MG211416**

Card14 (NM_130886) Mouse Tagged ORF Clone

Product data:

Product Type:	Expression Plasmids
Product Name:	Card14 (NM_130886) Mouse Tagged ORF Clone
Tag:	TurboGFP
Symbol:	Card14
Synonyms:	Bimp2; CARMA2
Mammalian Cell Selection:	Neomycin
Vector:	pCMV6-AC-GFP (PS100010)
E. coli Selection:	Ampicillin (100 ug/mL)



[View online »](#)

ORF Nucleotide Sequence:

>MG211416 representing NM_130886
 Red=Cloning site Blue=ORF Green=Tags(s)

TTTTGTAATACGACTCACTATAGGGCGGCCGGGAATTCGTCGACTGGATCCGGTACCGAGGAGATCTGCC
 GCC**CGGATCGCC**

ATGGCAGAACTGTGCCGATGGATTCCACACTGACTGCTCTGGACGAGGAGATGCTCTGGGATATGCTGG
 AGAGTCACCGATGCAGGATTGTGCAGAGCATCTGCCCTAGCCGGCTCACCCCTACTGCGCCAGGCCAA
 GGTGCTGGCCAGCTGGACGAGGAGGAGATCTGCATAGCTCCCGTTTCACCAACAGTGCCATGAGAGTT
 GGGCACTTGCTGGATCTGCTAAAGGCCCGAGGGAAGAATGGAGCCATTGCCTTTCTGAAAAGCTGAAGT
 TCCACAACCTGATGTCTACACCCTGGTCACTGGGCTGCAGTCTGACATTGACTTCAGCACTTTACGCGG
 TCTCATGGAGACATCCAAGCTGACCGAGTGTCTGGCTGGGGCCATCAGCAGCCTGCAGGAGGAGCTGGCC
 CAGGAGAAGGCACAGAAGGAGTTCTGCTCCGGAGATGCCAGCAGCTGAAGGAGCGCCTGGGCTTGCTG
 AGGCTCACGCAGAAGGTCTGCGCCAGCTGGAGGTCGACCACAGCCGCATGAAACGTGAGGTGAGCACCCA
 CTTCCACGAGGTCTGAAACTGAAGGACGAGATGCTGAACCTGTCACTGCACTACAGCAACGCCTCAGA
 GAGAAGGAGCTGGCTGCCACACGCTGCCACAGCCTTCAGGAAGAGCTCTACCTGGTGAAGCAGGAACTCC
 AGCGAGCAAGCCTTGATCGTATGTGAAAGAGAATCTCGAGAGAGGTCCTGAAGATGGCCAGCAACCT
 GGAGCCTCAGGGAGAAGAACTAAATCGGCTTAAGGAGGAGAATGAGAACTCCGCTCCATGACCTTCAGC
 CTGGTGGAGAAGGACATTCTGGAACAGAGTCTGGATGAGGCCAGGGAGAGCAAGCAAGAGCTGGTGGACC
 GCATCCACTCACTGCGGGAGAGAGCAGTGGCCGCGGAGAGGCAGCAGAAGCAGTACTGGGAGGAGAAGGA
 ACAGACCCTACTCCAGTCCGGAAGACACAGGTGGACTGTGAATATAAAAAGAAAAGATGACCATGCTT
 CAGGGCCAGGTGGCTGAGCTGCAGAAGGAACGTGACCAGGCATACACAGCAAGGGACAGGGCCAGATGG
 AGATTTCTCAGCGCTGGTGGAGAAGGATGCCCTTCGACAGGAGAGTGTTCGAGCTGACGGAGCAGTCTG
 TGAGTGCCTACTCAGCTGCGCAGGCTGCAGCGGAGGCCCCAGGAGGACCCAAGCAGGAAGCCGGAGCC
 AGGAACTCTGCCTCCGGGGGAAGCAGAGGCTTGTGCGGATGCATGCTGTGTGCCACCAGATGACAGTG
 ACTGCAGCCTCCTCAGCTCCACAGAGTCCCGGTTGTGGTGGGACCTGAATTCCACATCCAGCCGGGAGCA
 GATGGACAGTTCGCTCCAGCAGCCCCATGCCTCCAGCCAGCAGTCCCTGTACAAGCGGGTGGCAGAG
 GACTTCTGGAAGACCCCGAGTCTCTAAGCTTCCAGAAAGTCTTGAAGTGCCTTCAAGGGGCTACGG
 TGGACGACACAGACACAGACCTGGAGTTTGAAGTATTGATGGAGCAGACCTCTCTCAGACAGAAGACAG
 CCTGCAGGGGTCTTCCCGAGCCTGAATGTCTCAGAAAGCAGTGTCCCCGTGAGGAGGAGGCCAGCCCGC
 AAGATCCTAAGCCAGGTACGGTCTGGGTTCCAAGGGACGCGTTGCTGGAACAGATTGGTGTATCG
 GTGGGAACCTCACTGGGATCTTCAATCACCGTGTACCCCGGCTCTGCAGCAGATGAGATGGCCCTGCG
 CCCTGGTACCCAGATCATGATGGTGGACTATAAACCTACCAAGCCATCATTAAAGGGCCACTCTGGAGAAT
 ACAACGCTGGAGCAGGCTGTGGGCTTCTCAGGAGGGTGAATGGCTCCTGCTACTTGTCTGTGAAGATCA
 ACACTGAAGGTTATAAGAACCTCATCCAGGACCTAGATGCCAAAGTGGTAACGTCTGGGGATTCTTCTA
 CATCCGTGTCAACCTGGCCATGCAGAGGGGAGGGGACGGAGAAGTCAAACCTCACTGCAATGACATCCTG
 CATGTCACTGACACCATGTTCCAAGGCCGAGCTGCTGGCATGCCACCATGTGAACCCCTACACCATGA
 AAGACATGGAGCCTGGCACCATCCCCAACTATTCACAGGCTCAGCAGCAGCTTCTGGCCCTCATCCAGGA
 CATGACTCAACGGTGCACAGTCCCCGCAAGCCTCCTGGAGGACCACAGAAGTTAGTACGAATTGTCAGT
 GTGGACAAAGCCGCTGTACGTCTGACTTCTCCTTTGACCAAGCCAGTGGGATTCTGGCAAGGAGG
 AAGGTGGTCTAGCGTGTCTTCTGGTCAAGAGCTGCTTACCCTGGCACCGTACACCCTGGTGCACCC
 CCACAGGCTGCCCGGCCCGGCTGTGCTGTTTGTGCCTAGATTAGTTGGAAGGATCCTGGGTA AAAAG
 CTGTGTCTCCTCAAGGTTTTAAGCAATGTTTCAGCAGAGTACTTGAGCCAGGAGGAGTATGCCACCTGGA
 GTCAGAGAGGGGACATCATCCAGGAGGGAGAGTCAATAGGTGACCACCACTGGATCACCCGGCATGCTGT
 GGAGTCCCTCATGAATATGAGCACCCACGCCCTGCTGGATGTGCGGCTGGACAGCGTCCGAGTCTACAT
 AGGATGGACATGTTTCCATTATCATCCATGTCTCTGTCAATGAGAAGACAGCAAAGAACTCAGGAAGG
 GCCTGCATCGGCTTGGCAGCTCGGAGGAGCAGTCTCTGGAGGTGGCCCGCAGGAGGAGGGGAGCTGGA
 CAGAGTGCCGTGTCTGTACAGCAGCCTGGCCCCGACAGCTGGAGTGATCTGGACAGCCTGCTCAGCTGT
 GTGCGCCTGGCCATTGCAGATGAGCAGAAGAAGTGGTGTGGACAGAGAGCCCTGC

AG**CGGACCG**ACGCGTACGCGGCCGCTCGAG - GFP Tag - GTTTAA

Protein Sequence: >MG211416 representing NM_130886
 Red=Cloning site Green=Tags(s)

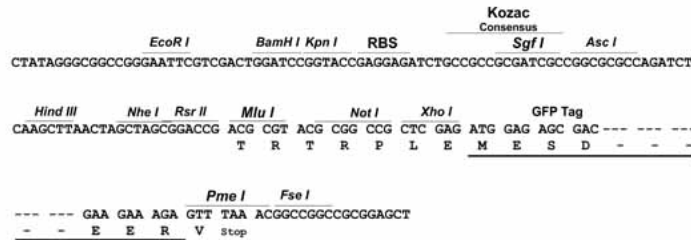
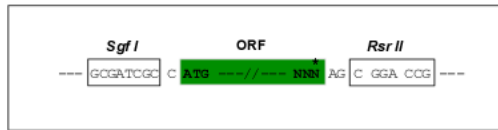
MAELCRMDSTLTALDEEMLWDMLESHRCRIVQSI CPSRLTPYL RQAKVLGQLDEEEILHSSRFTNSAMRV
 GHLLDLLKARGKNGAIAFLESLKFHNPVYTLVTGLQSDIDFSTFSGLMETSKLTECLAGAISSLQEELA
 QEKAQKEVLLRRCQQLKERLGLAEAHAEGLRQLEVDHSRMKREVSTHFHEVLKLDKDEMLNLSLHYSNALR
 EKELAATRCHSLQEELYLVKQELQRASLVSSCERESRERSLKMASNLEPQGEELNRLKEENEKLRSMTF S
 LVEKDILEQSLDEARESKQELVDRIHSLRERAVAAERQQKQYWEEKEQTL LQFRKTQVDCELYKEKMTML
 QQQVAELQKERDQAYTARDRAQMEISQRLVEKDALRRRVFELTEQVCELRTQLRRLQAEAPGGPKQEAGA
 RELCLRKGQRLVRMHAVCPPDDSDCSLLSSTESRLWDDLNSTSSREQMDSFRSSSPMPSSQSLYKRVAE
 DFLEDPELSFPEVLEMRLQGATVDDTDTDFEFEMIDGADLSQTEDSLQGSSRSLNVSESSVPRRRPAR
 KILSQVTVLAFQGDALLEQIGVIGGNLTGIF IHRVTPGSAADEMALRPGTQIMMVDYKPTKPSLRATLEN
 TTLEQAVGLLRVNGSCYL SVKINTEGYKNLIQDLDAKVVTSGDSFYIRVNLAMQRGGDGELQTHCNDIL
 HVTDTMFQGRSCWHAHHVNPYTMKDMEPGTIPNYSQAQQQLLALIQDMTQRCTVPRKPPGGPQKLVRIVS
 VDKAAVSPLTSSFDQSQWDSGKEEGGSPVCFWSESCFTLAPYTLVPHRPARPRVLFVPRLVGRILGKK
 LCLLQGFQCSAEYLSQEEYATWSQRGDI IQEGESI GDHWHITRHAVESLMNMSTHALLDVRLDSVRVLH
 RMDMFPII IHVSVNEKTAKKLRKGLHRLGSSEEQFLEVARQEEGELDRVPCLYSSLAPDWSDDL SLLSC
 VRLAIADEQKKVWVWTESPC

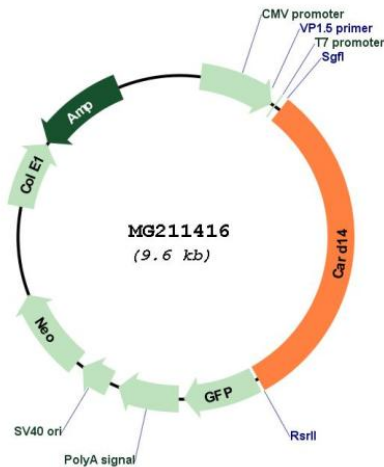
SGPTRRRLE - GFP Tag - V

Restriction Sites: SgfI-RsrII

Cloning Scheme:

Cloning sites used for ORF Shuttling:



Plasmid Map:


ACCN: NM_130886

ORF Size: 2997 bp

OTI Disclaimer: Due to the inherent nature of this plasmid, standard methods to replicate additional amounts of DNA in *E. coli* are highly likely to result in mutations and/or rearrangements. Therefore, OriGene does not guarantee the capability to replicate this plasmid DNA. Additional amounts of DNA can be purchased from OriGene with batch-specific, full-sequence verification at a reduced cost. Please contact our customer care team at custsupport@origene.com or by calling 301.340.3188 option 3 for pricing and delivery.

The molecular sequence of this clone aligns with the gene accession number as a point of reference only. However, individual transcript sequences of the same gene can differ through naturally occurring variations (e.g. polymorphisms), each with its own valid existence. This clone is substantially in agreement with the reference, but a complete review of all prevailing variants is recommended prior to use. [More info](#)

OTI Annotation: This clone was engineered to express the complete ORF with an expression tag. Expression varies depending on the nature of the gene.

Components: The ORF clone is ion-exchange column purified and shipped in a 2D barcoded Matrix tube containing 10ug of transfection-ready, dried plasmid DNA (reconstitute with 100 ul of water).

- Reconstitution Method:**
1. Centrifuge at 5,000xg for 5min.
 2. Carefully open the tube and add 100ul of sterile water to dissolve the DNA.
 3. Close the tube and incubate for 10 minutes at room temperature.
 4. Briefly vortex the tube and then do a quick spin (less than 5000xg) to concentrate the liquid at the bottom.
 5. Store the suspended plasmid at -20°C. The DNA is stable for at least one year from date of shipping when stored at -20°C.

RefSeq: [NM_130886.2](#)

RefSeq Size: 3958 bp

RefSeq ORF: 3000 bp

Locus ID: 170720

UniProt ID: [Q99KF0](#)

Cytogenetics: 11 E2

Gene Summary: Acts as a scaffolding protein that can activate the inflammatory transcription factor NF-kappa-B and p38/JNK MAP kinase signaling pathways. Forms a signaling complex with BCL10 and MALT1, and activates MALT1 proteolytic activity and inflammatory gene expression. MALT1 is indispensable for CARD14-induced activation of NF-kappa-B and p38/JNK MAP kinases. May play a role in signaling mediated by TRAF2, TRAF3 and TRAF6 and protects cells against apoptosis.[UniProtKB/Swiss-Prot Function]