

Product datasheet for **MG211412**

Sema6d (BC060680) Mouse Tagged ORF Clone

Product data:

Product Type:	Expression Plasmids
Product Name:	Sema6d (BC060680) Mouse Tagged ORF Clone
Tag:	TurboGFP
Symbol:	Sema6d
Synonyms:	NM_199238, Sema6D-1, Sema6D-2, Sema6D-4, Sema6D-5, Sema6D-6, mKIAA1479, D330011G23
Mammalian Cell Selection:	Neomycin
Vector:	pCMV6-AC-GFP (PS100010)
E. coli Selection:	Ampicillin (100 ug/mL)



[View online »](#)

**ORF Nucleotide
Sequence:**

>MG211412 representing BC060680
 Red=Cloning site Blue=ORF Green=Tags(s)

TTTTGTAATACGACTCACTATAGGGCGGCCGGAATTCGTCGACTGGATCCGGTACCGAGGAGATCTGCC
 GCC**CGCATCGC**

ATGGGGTTCTTCTGCTTTGGTTCTGCGTGCTGTTCTTCTGGTCTCCAGGTTACGGGCGGTGAGCTTCC
 CAGAAGACGATGAGCCCCCAACACGGTTGACTATCACTATTCAGGCAATATCCGGTTTTAGAGGACG
 CCCTTCAGGCAACGAATCGCAGCACAGGCTGGACTTTCAGCTGATGTTGAAAATTCGAGACACATTTAT
 ATTGCTGGCAGGGATCAAGTCTATACAGTGAACCTAAATGAAATCCCCAAACAGAGGTGATACCAAGCA
 AGAAGCTGACGTGGAGGTCCAGACAGCAGGATCGAGAAAATTGTGCTATGAAAGGCAAGCATAAAGATGA
 ATGCCACAACCTCATCAAAGTCTTTGTCCCAAGAAATGATGAGATGGTTTTGTCTGTGGTACCAATGCT
 TTCAACCCGATGTGCAGATACTATAGGTTGAGAACGTTAGAGTATGATGGGAAGAAATAGTGGCCTGG
 CACGATGCCGTTTGTGCCCCGACAAACCAATGTCGCCCTCTTTGCTGATGGAAGAACTCTATTCTGCCAC
 AGTGGCTGATTTCTGGCCAGTGTGCTGTCATTTACAGAAGCATGGGAGATGGATCTGCCCTTCGCACA
 ATAAAATACGATTCCAAGTGGATCAAAGAACCACACTTCCTTCATGCCATAGAATATGGAAGTATGTCT
 ATTTCTTCTTCAGAGAAATCGCCGTGGAACATAATAACTTAGGCAAGGCTGTGTATTCGCCGTGGCTCG
 CATTTGTAAGAACGACATGGGTGGCTCACAGCGGGTCTGGAGAAACACTGGACTTCCTTCTTAAGGCT
 CGGCTGAAGTGTCCGTTCTGGAGATTCCTTTTTCTACTTCGACGTCTGCAGTCTATAACAGACATAA
 TCCAAATCAATGGCATCCCCACTGTGGTTGGGGTCTTACCACACAGTCAACAGCATTCTGGTTCTGC
 AGTCTGTGCCCTTAGCATGGACGACATTGAGAAAGTGTCAAAGGGCGGTTCAAAGAGCAGAAAACCCCA
 GACTCTGTTTGGACAGCAGTTCGGAAGACAAAGTACCAAAACCAAGGCTGGCTGTTGTCCAAACACG
 GCCTCGCAGAAGCTTACAAGACCTCCATCGACTTTCCAGATGACACCCTGGCTTTTCATCAAGTCCACCC
 GCTGATGGACTCTGCCGTCCACCCATTGCCGATGAGCCCTGGTTCAAAAGACACGGGTACAGTACAGG
 TTGACAGCCATCGAAGTGGACCGTTTCAGCAGGGCCATACCAAACTACACAGTCTCTTTGTTGGCTCTG
 AAGCTGGCGTGGTACTTAAAGTTTTGGCAAAGACAGTCTTTCTCTGAATGACAGTGTATTACTCGA
 AGAGATTGAAGCTTATAACCCAGCCAAGTGCAGCGCCGAGAGTGAGGAGGACAGAAAGTGGTCTCATT
 CAGCTGGACAAGGATCCCATGCTTTATACGTGGCCTTCTAGCTGCGTGGTCCGCATCCCCCTCAGCC
 GCTGTGAGCGCTACGGATCGTGTAAAAGTCTTGCAATGCATCACGTGACCCGACTGTGGTTGGTTAAG
 CCAGGGAGTTTGTGAGAGAGTGACCCTAGGGATGCTCCCTGGAGGATATGAGCAGGACACGGAGTACGGC
 AACACAGCCACCTAGGGGACTGCCACGGTGTACGGTGGGAAGTCCAGTCTGGAGAATCCAATCAGATGG
 TCCACATGAATGCTCTCATCACCTGCGTGTTCGCCGCTTTGTCTGGGCGGTTTCATCGCAGGAGTGGC
 CGTGTACTGCTACCGTGACATGTTGCTTCGGAAGAACAGAAAGATCCATAAAGACGAGAAATCCGCCAG
 TCGTGACAGACTCCAGCGGAAGCTTCGCCAAGCTGAACGGCCTCTTTGACAGCCCCGTCAAGGAATACC
 AGCAGAACATTGATTCTCCCAAACCTCTACAGCAACCTGCTGACCAAGTCCGAAGGAAGTCCACCAACAC
 GGATACAAAGTCCATGGCCGTGGACCACAGAGGCCAGCCTCCCGAGCTGGCTGCTCTCCACGCGCGGAA
 TCCACACCTGTCTCCACCAGAAGACCTGCAGGCCATGAAGAGCCACTCTGAGAAGGCCACAGCCACG
 GTGCTTCAAGGAAAGAACACCCCAAGTTTTCTTCTAGTCTCCACCCCAATCCCAATTGAGTACGG
 GCATATCCCAAGTGCCATCGTTCTTCAAACGCCACTCACGACTACAATACATCCTTCTCCAACCTCGAAT
 GCCACAAAGCCGAAAGAAAGCTTCAGAGCATGGATCACCTCTTACGAAGTCATCCAGTAAAGCGGGAGC
 ACCGGCGGTCTGTGGATTCCAGGAATACTCTCAATGATCTCTGAAGCATCTAAATGACCCAAACAGTAA
 CCCCAGGCCATCCTGGGAGAGATCCATATGGCTCATCAAACCCTCATGCTGGACCCGGTGGGACCAATG
 GCTGAGGTCCCACCAAGGTCCCTAACCGGGAGGCATCTCTATACTCCCTCCCTCCACACTCCCCAGAA
 ATAGTCCAACCAAGAGAGTAGATGTCCCACCACTCTGGGGTGCCAATGACTTCTCTGGAAGACAAAG
 GGGTTATCAAAAAATTCCTCCAGAGGCACTCTATATCTGCCGTGCCTAAAACTTAACTCACCAAAT
 GGTGTTTTGTATCTAGACAGCCGAGTATGAACCGTGGAGGCTATATGCCACCCCAACAGGGGCGAAGG
 TGGACTATATTCAGGGGACACCGGTGAGTGTTCTGTCAGCCCTCCCTCTCCAGACAGAGCAGCTATAC
 CAGTAATGGCACCTCCCAAGGACGGGACTAAAGAGGACACCATCCTTAAACCTGATGTGCCACCAAG
 CCTTCTTTGTTCCGCAACACATCTGTGACACCACTGAACAAGTACACGTAC

ACGCGTACGCGGCCGCTCGAG - GFP Tag - GTTTAA

Protein Sequence: >MG211412 representing BC060680
Red=Cloning site Green=Tags(s)

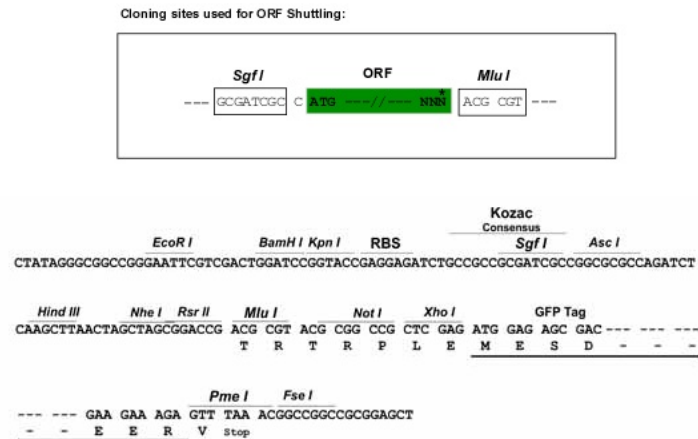
MGFLLLWFCVLFLLSRLRAVSFPEDDEPLNTVDYHYSRQYPVFRGRPSGNEHQHRLDFQLMLKIRDTLY
IAGRDQVYTVNLNEIPQTEVIPSCKLTWRSRQQDRENCAMKGKHKDECHNFIKVFVPRNDEMVFVCGTNA
FNPMCRYRLRTLEYDGEEISGLARCPFDARQTNVALFADGKLYSATVADFLASDAVIYRSMGDGSALRT
IKYDSKWIKEPHFLHAIEYGNVYVFFFREIAVEHNNLGKAVYSRVARICKNDMGGSQRVLEKHWTSFLKA
RLNCSVPGDSFFYFDVLQSIDIIQINGIPTVVGVTTLQNSIPGSAVCAFSMDIEKVFKGGRFKEQKTP
DSVWTAVPEDKVPKPRPGCCAKHGLAEAYKTSIDFPDDTLAFIKSHPLMDSAVPPIADEPWFTKTRVRYR
LTAIEVDRSAGPYQNYTVIFVGSEAGVVLKVLAKTSPFSLNDSVLLLEEIEAYNPAKCSAESEEDRKVVSL
QLDKDHHALYVAFSSCVRIPLSRCERYGSCCKSCIASRDPYCGWL SQGVCERTVLGMLPGGYEQDTEYG
NTAHLGDCHGVWEVQSGESNQMVHNMVLITCVFAAFVLGAFIAGVAVCYRDMFVRKNRKIHKDAESAQ
SCTDSSGSF AKL NGL FDSVPVKEYQQNIDSPKLYSNLLTSRKELPPNTDTKSMAVDHRGQPPELAALPTE
STPVLHQKTLQAMKSHSEKAHSHGASRKEHPQFFPSSPPPHSPLSHGHIPSAIVLPNATHDYNTSFSNSN
AHKAEKKLQSM DHPLTKSSSKREHRRSVDSRNTLNDLLKHLNDPNSNPKAILGEIHMAHQTLMLDPVGP
AEVPPKVPNREASLYSPSTLPRNSPTKRVDPVPTTPGVPM TSLERQRGYHKNSSQHRHSISAVPKNLNSPN
GVLLSRQPSMNRGGYMPPTGAKVDYIQGTPVSVHLQPSLSRQSSYTSNGTLPR TGLKRTPSLKPDPVPPK
PSFVPQTTSVRPLNKYTY

TRTRPLE - GFP Tag - V

Restriction Sites:

Sgfl-MluI

Cloning Scheme:

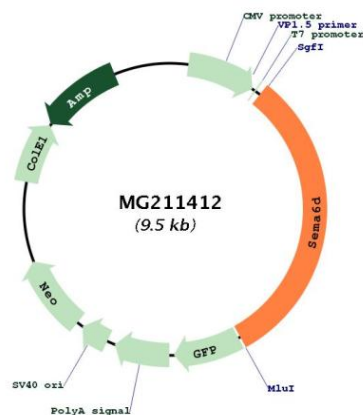


ACCN: BC060680

ORF Size: 2996 bp

OTI Disclaimer:	The molecular sequence of this clone aligns with the gene accession number as a point of reference only. However, individual transcript sequences of the same gene can differ through naturally occurring variations (e.g. polymorphisms), each with its own valid existence. This clone is substantially in agreement with the reference, but a complete review of all prevailing variants is recommended prior to use. More info
OTI Annotation:	This clone was engineered to express the complete ORF with an expression tag. Expression varies depending on the nature of the gene.
Components:	The ORF clone is ion-exchange column purified and shipped in a 2D barcoded Matrix tube containing 10ug of transfection-ready, dried plasmid DNA (reconstitute with 100 ul of water).
Reconstitution Method:	<ol style="list-style-type: none"> 1. Centrifuge at 5,000xg for 5min. 2. Carefully open the tube and add 100ul of sterile water to dissolve the DNA. 3. Close the tube and incubate for 10 minutes at room temperature. 4. Briefly vortex the tube and then do a quick spin (less than 5000xg) to concentrate the liquid at the bottom. 5. Store the suspended plasmid at -20°C. The DNA is stable for at least one year from date of shipping when stored at -20°C.
RefSeq:	BC060680 , AAH60680
RefSeq Size:	5596 bp
RefSeq ORF:	2996 bp
Locus ID:	214968
Cytogenetics:	2 F1
Gene Summary:	Shows growth cone collapsing activity on dorsal root ganglion (DRG) neurons in vitro. May be a stop signal for the DRG neurons in their target areas, and possibly also for other neurons. May also be involved in the maintenance and remodeling of neuronal connections (By similarity).[UniProtKB/Swiss-Prot Function]

Product images:



Circular map for MG211412

