

Product datasheet for **MG211389**

Epha4 (NM_007936) Mouse Tagged ORF Clone

Product data:

Product Type:	Expression Plasmids
Product Name:	Epha4 (NM_007936) Mouse Tagged ORF Clone
Tag:	TurboGFP
Symbol:	Epha4
Synonyms:	2900005C20Rik; AI385584; Cek8; Hek8; rb; Sek; Sek1; Tyro1
Mammalian Cell Selection:	Neomycin
Vector:	pCMV6-AC-GFP (PS100010)
E. coli Selection:	Ampicillin (100 ug/mL)



[View online »](#)

ORF Nucleotide Sequence:

>MG211389 representing NM_007936
 Red=Cloning site Blue=ORF Green=Tags(s)

TTTTGTAATACGACTCACTATAGGGCGGCCGGAATTCGTCGACTGGATCCGGTACCGAGGAGATCTGCC
 GCC**GCGATCGCC**

ATGGCTGGGATTTTCTATTTTCATCTCTTTTCGTTTCTCTTTGGAATTTGCGACGCTGTACCCGGTTCTA
 GGGTATACCCCGGAATGAAGTTACTTTATTGGATTCCAGATCTGTTTCAGGGAGAGCTTGGGTGGATAGC
 AAGCCCTCTGGAAGGAGGGTGGGAGGAAGTGAGCATTATGGATGAGAAAAATACACCGATCCGAACCTAC
 CAGGTGTGCAACGTGATGGAAGCCAGCCAGAACAAGTGGCTGCGAACTGACTGGATCACCCGCGAAGGGG
 CGCAGAGGGTGTACATTGAAATTAAGTTCACTCTAAGGGACTGCAACAGTCTTCCGGGCGTCATGGGGAC
 TTGCAAGGAGACGTTAACCTCTACTACTATGAGTCGGACAACGACAAGGAGCGTTCATCAGAGAGAGC
 CAGTTTGGCAAGATCGACACCATCGCAGCTGATGAGAGCTTCACGCAGGTGGACATTGGTGACCGAATCA
 TAAAACCTCAACTGAGATCCGGGATGTAGGGCCACTGAGCAAGAAAGGGTTTTACCTGGCTTTTCAGGA
 TGTGGGTGCTTGCATCGCCCTGGTGTCTGTCCGTGTGTTCTACAAGAAGTGTCCACTCACCGTTCGAAAT
 CTAGCCAGTTTCTGATACCATTACTGGGGCTGATACCTCTTCCTGGTGGAAAGTTCGAGGCTCCTGTG
 TCAACAACCTCAGAAGAGAAGGATGTGCCAAAAATGTAAGTGTGGGGCAGATGGTGAATGGCTGGTACCCAT
 TGGCAACTGCCTATGCAACGCTGGGCACGAGGAGCAGAATGGTGAATGCCAAGCTTGCAAAATTTGGATAT
 TACAAAGCTCTTCCACGGACGCCTCCTGTGCCAAGTGTCCACCGCACAGCTACTCTGTCTGGGAAGGAG
 CCACGCTCTGCACCTGTGACCGAGGCTTTTTTTCAGAGCTGACAACGATGCAGCCTCCATGCCCTGCACCCG
 CCCACCATCTGCTCCCTCAACTTGATTCTAATGTCAATGAGACATCGGTGAACTTGGAATGGAGCAGC
 CCTCAGAACACAGGTGGCCGTGAGGACTTTCTTACAACGTGGTCTGCAAGAAATGTGGAGCTGGTGATC
 CCAGCAAGTCCCGCCCTGTGGAAGTGGAGTCCACTACACACCACAGCAGAACGGACTCAAGACGCCAG
 AGTCTCCATCACTGACCTCCTAGCACACACCAATTACACGTTTGAGATCTGGGCAGTGAATGGAGTGTCT
 AAGTATAACCCTAGCCCGGACCAGTCCGTGTCTGTGACAGTGACAACCAACCAAGCAGCACCATCATCCA
 TTGCTTTGGTCCAGGCTAAAGAAGTTACAAGATATAGCGTAGCTCTGGCTTGGCTGGAACAGATCGACC
 AAATGGAGTCACTTAGAATATGAAGTCAAAATATTATGAAAAGGATCAGAATGAACGCAGCTATCGCATA
 GTCCGGACAGCTGCCAGGAACACAGATATCAAAGGCTGAACCTCTGACTTCTATGTTTTTTCAGTGC
 GAGCCAGGACCGCTGCTGGCTACGGAGACTTCAGCGAGCCCTGGAAGTCACTACTAATACAGTGCCTTC
 CCGCATCATTGGCGATGGAGCCAACTCCACTGTCTGCTGGTCTCCGTCTCTGGCAGTGTGGTCTCGTG
 GTCATTCTCATTGAGCTTTTGTGATCAGCCGAAGACGGAGTAAGTACAGCAAAGCGAAACAAGAAGCAG
 ATGAAGAGAAACATTTGAATCAAGGTGTTAGAACTTATGTGGATCCCTTTACATACGAAGACCCCAACCA
 GGCAAGTTCGAGAATTTGCCAAAGAAATCGATGCATCCTGCATTAATAATGAAAAGGTCATAGGAGTTGGT
 GAATTTGGAGAGGTCTGCAGTGGGCGTCTCAAAGTGCCTGGCAAGAGAGAGATCTGTGTGGCCATCAAGA
 CTCTGAAAGCTGGCTATACTGACAAGCAGAGGAGAGACTTCTGAGTGGAGCCAGCATCATGGGACAGTT
 TGACCACCCAAACATAATCCACCTGGAAGGCGTTGTACCAAAATGTAAACCGGTAATGATCATAACGGAG
 TACATGGAGAACGGCTCCTTGGATGCTTTCCTCAGGAAGAATGATGGCCGCTTTACAGTCATTGAGCTGG
 TGGGATGCTCCGGGCAATTGGCTCGGGGATGAAGTACTTATCTGATATGAGCTATGTGCATCGAGACCT
 GGCTGCCAGGAACATCCTGGTAAACAGCAACTTGGTCTGCAAGGTGTCTGACTTTGGCATGTCCAGGGTG
 CTGGAGGATGACCCCGAAGCAGCCTACACTACCAGGGGTGGCAAGATTCCATCCGGTGGACTGCGCCAG
 AAGCAATTGCGTATCGTAAATTTACCTAGCCAGTGTGCTGGAGCTACGGAATCGTTATGTGGGAAGT
 GATGTCATATGGAGAGAGACCGTACTGGGATATGTCCAATCAAGATGTGATCAAAGCCATCGAGGAAGGG
 TACCGGCTACCCCTCCAATGGACTGCCCATTTGCCCTCCATCAGTTAATGCTGGACTGCTGGCAGAAAG
 AGAGAAGTGACAGGCTAAATTTGGGCAGATCGTCAACATGCTGGACAACTCATCCGCAATCCCAACAG
 CCTGAAGAGGACAGGGTCGGAGAGTTCCAGACCAACACAGCCTTGTAGATCCAGCTCCCTGAATTC
 TCTGCTGTAGTATCAGTGGGCGACTGGCTGCAGGCCATCAAAATGGACCGGTATAAGGACAACCTTACGG
 CCGCCGGGTACACGACACTAGAAGCCGTGGTTCACATGAGCCAGGACGACCTGGCGAGAATTTGGCATCAC
 CGCCATCACGCACCAGAATAAGATTTTGTAGCAGCGTCCAGGCGATGCGAACCAGATGCAGCAGATGCAT
 GGCAGGATGGTTCCTGTC

ACGCGTACGCGGCCGCTCGAG - GFP Tag - GTTTAA

Protein Sequence: >MG211389 representing NM_007936
 Red=Cloning site Green=Tags(s)

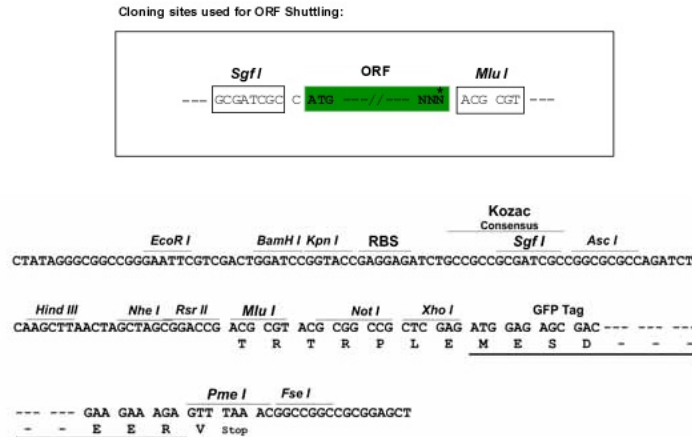
MAGIFYFILFSLFGICDAVTGSRVYPANEVTL L DSRVQGELGWIASPLEGGWEEVSIMDEKNTPIRTY
 QVCNVMEASQNNWLRTDWITREGAQRVYIEIKFTLRDCNSLPGVMGTCKETFNL YYYESDNDKERFIRES
 QFGKIDTIAADESFTQVDIGDRIMKLNTEIRDVGPLSKKGFYLAQDVGACIALVSVRVFYKCKPLTVRN
 LAQFPDITGADTSSLVEVRGSCVNNSEKDVPKMYCGADGEWL VPIGNCLCNAGHEEQNGECQACKIGY
 YKALSTDASCAKCPPHSYSVWEGAT SCTCDRGFFRADNDAASMPCTRPPSAPLNLSNVNETSVNLEWSS
 PQNTGGRQDISYNVVCKKCGAGDP SKCRPCGSGVHYTPQQNGLKTRVSI TDLLAHTNYTFEIVAVNGVS
 KYNPSPDQSVSVTVTTNQAAPSSIALVQAKEVTRYSVALAWLEPDRPNGVILEYEVKYYEKDQNERYSRI
 VRTAARNTDIKGLNPLTSYVFHVRARTAAGYGDFSEPLEVTTNTVPSRIIGDGANSTVLLVSVSGSVLV
 VILIAAFVISRRRSKYSKAKQEAD EKHNLNQGVRTYVDPFTYEDPNQAVREFAKEIDASCIKIEKVI
 GVEFGVCSGRLKVPKREICVAIKTLKAGYTDKQRRDFLSEASIMGQFDHPNIIHLEGVVTKCKPVMITE
 YMENGLDAFLRKNDRFTVIQLVGMLRIGSGMKYLSMSYVHRDLAARNILVNSNLVCKVSDFGMSRV
 LEDDPEAAYTTRGGKIPIRWTAPEAIARFKFTSASDVWSYGIWMVEVMSYGERPYWDMNQDVIKAIIEEG
 YRLPPPMDCPIALHQLMLDCWQKERSDRPKFGQIVNMLDKLIRNPNSLKRGTGSESSRPNTALLDPSSPEF
 SAVVSVGDWLQAIKMDRYKDNFTAAGYTTLEAVVHMSQDDLARIGITAITHQNKILSSVQAMRTQM^QMMH
 GRMVPV

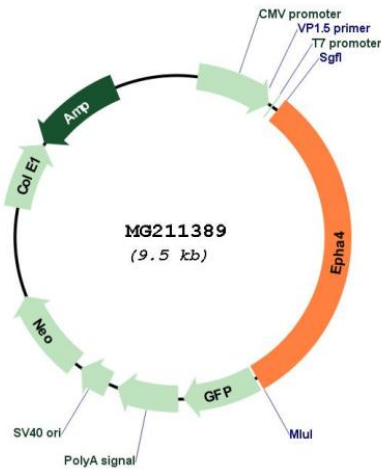
TRTRPLE - GFP Tag - V

Restriction Sites:

SgfI-MluI

Cloning Scheme:



Plasmid Map:


ACCN: NM_007936

ORF Size: 2958 bp

OTI Disclaimer: The molecular sequence of this clone aligns with the gene accession number as a point of reference only. However, individual transcript sequences of the same gene can differ through naturally occurring variations (e.g. polymorphisms), each with its own valid existence. This clone is substantially in agreement with the reference, but a complete review of all prevailing variants is recommended prior to use. [More info](#)

OTI Annotation: This clone was engineered to express the complete ORF with an expression tag. Expression varies depending on the nature of the gene.

Components: The ORF clone is ion-exchange column purified and shipped in a 2D barcoded Matrix tube containing 10ug of transfection-ready, dried plasmid DNA (reconstitute with 100 ul of water).

Reconstitution Method:

1. Centrifuge at 5,000xg for 5min.
2. Carefully open the tube and add 100ul of sterile water to dissolve the DNA.
3. Close the tube and incubate for 10 minutes at room temperature.
4. Briefly vortex the tube and then do a quick spin (less than 5000xg) to concentrate the liquid at the bottom.
5. Store the suspended plasmid at -20°C. The DNA is stable for at least one year from date of shipping when stored at -20°C.

RefSeq: [NM_007936.2](#)

RefSeq Size: 6328 bp

RefSeq ORF: 2961 bp

Locus ID: 13838

UniProt ID: [Q03137](#)

Cytogenetics: 1 39.55 cM

Gene Summary:

Receptor tyrosine kinase which binds membrane-bound ephrin family ligands residing on adjacent cells, leading to contact-dependent bidirectional signaling into neighboring cells. The signaling pathway downstream of the receptor is referred to as forward signaling while the signaling pathway downstream of the ephrin ligand is referred to as reverse signaling. Highly promiscuous, it has the unique property among Eph receptors to bind and to be physiologically activated by both GPI-anchored ephrin-A and transmembrane ephrin-B ligands including EFNA1 and EFNB3. Upon activation by ephrin ligands, modulates cell morphology and integrin-dependent cell adhesion through regulation of the Rac, Rap and Rho GTPases activity. Plays an important role in the development of the nervous system controlling different steps of axonal guidance including the establishment of the corticospinal projections. May also control the segregation of motor and sensory axons during neuromuscular circuit development. In addition to its role in axonal guidance plays a role in synaptic plasticity. Activated by EFNA1 phosphorylates CDK5 at 'Tyr-15' which in turn phosphorylates NGEF regulating RHOA and dendritic spine morphogenesis. In the nervous system, plays also a role in repair after injury preventing axonal regeneration and in angiogenesis playing a role in central nervous system vascular formation. Additionally, its promiscuity makes it available to participate in a variety of cell-cell signaling regulating for instance the development of the thymic epithelium.[UniProtKB/Swiss-Prot Function]