

Product datasheet for **MG211357**

Wdr59 (BC066082) Mouse Tagged ORF Clone

Product data:

Product Type:	Expression Plasmids
Product Name:	Wdr59 (BC066082) Mouse Tagged ORF Clone
Tag:	TurboGFP
Symbol:	Wdr59
Synonyms:	5430401O09Rik; Cdw12
Mammalian Cell Selection:	Neomycin
Vector:	pCMV6-AC-GFP (PS100010)
E. coli Selection:	Ampicillin (100 ug/mL)



[View online »](#)

ORF Nucleotide Sequence:

>MG211357 representing BC066082
 Red=Cloning site Blue=ORF Green=Tags(s)

TTTTGTAATACGACTCACTATAGGGCGGCCGGGAATTCGTCGACTGGATCCGGTACCGAGGAGATCTGCC
 GCC**CGGATCGCC**

ATGGCGGCGCGCTGGAGCAGCGAGAACGTGGTGGTGGAGTTTCGAGACTCTCAGGCAACTGCCATGTCTG
 TGGACTGTCTTGGGCAGCATGCAGTGCTTTCTGGCCGACGATTCTGTACATCGTCAATCTAGATGCCCC
 TTTTGAAGGTCACCGGAAGATCTCCCGCCAGAGCAAATGGGACATTGGAGCTGTGCACTGGAACCCAT
 GACAGCTTCGCACACTATTTTGCAGCTTCGAGTAATCAACGGGTCGACCTTTATAAGTGGAAAGATGGCA
 GCGGGGAAGTTGGTACAACCTTACAGGGGCACACTCGAGTTATCAGCGACTTGGACTGGGCACTGTTTGA
 GCCAGATCTCCTGGTACCAGCTCTGTGGACACCTACATCTACATCTGGGATATCAAAGACACAAGGAAA
 CCTACTGTTGACTGTGCGCTGTAGCTGGTGCCTCCCAGGTCAAATGGAATAAGAAGAACGCCAACTACC
 TTGCCACCAGTCACGATGGTGACGTACGGATATGGGACAAGCGAAAACCCAGTACAGCTGTGGAATATCT
 AGCAGCCACCTCTCAAGATCCACGGCTGGACTGGCACCCAGACAGTACAGCAGTCTTTGCCACCTCC
 AGTCAAGATAACTCTGTCAAGTTCTGGGATTACCGCCAGCTCGGAAATACCTCAATATCTCCCTTGCC
 AGGTGCCTGTCTGAAAGCCAGATACACGCCTTTCAGCAACGGGCTAGTGACCGTGTGGTTCCCCAGCT
 GCGGAGGGAGAACAGCCTGCTCCTGTGGAACGCGTCTGACTTGAACGCTCCAGTTACACCTTTGTGGGT
 CATGATGACGTGGTGTGGAGTTCCAGTGGAGGAGGCAGAAGGAAGGATCCAAGGACTATCAACTGGTTA
 CATGGTCCCGTGTACAGACCTTGAGAATGTGGCGAGTGGACTATCAAATGCAGAGGCTCTGTGCCAATGA
 CATACTGGATGGTGTGATGAGTTCATTGAGAGCATCTCTCTCCTGCCGGAACAGAGAAGACCCACAT
 CCTCAAGACATAGATCACCAGCCAGCTTAAGCCATGGAGAGGAAGATGCCATAAAGGAAGACCCCTCCA
 CGACTTTGCTGGAAGAGAAGAGATCAGACCAACTAGGCCCTCCCCAGACTCTGCAACAGGAGTTCTCCTT
 GATCAACGTGCAGATCCGGAATGTCAATGTGGAGATGGACGCTGCAGACCGGAGCTGCACAGTGTCTGTG
 CACTGCAGCAACCACCGTGTGAAGATGCTGGTACCTTCCCGGCCAGTACCCTAACAACGCTGCTCCTT
 CTTCCAGTTCATTAATCCTACCACTATCACGTCTGCCGTGAAGGCCAAGCTGCTGAAGATCCTAAAGGA
 CACTTCACTGCAGAAAGTAAACGCAACCAGAGCTGTTTGGAGCCTTGCTGCGCCAGCTGTCTCGTGC
 CTTGAGTCTTTGTGAACCAAGAGGACAGTGTCTTAGCAACCCATTTGCACTCCAAAACCTGTACAC
 CACCCTTGCCGACATTTGCACGGGTGACCCTGCTACGGCTCCTACCAGGATGCCAACATTCCCTTTCC
 TAGGACCTCTGGGCCAGGTTCTGTGGAGCAGGTTACCTGGTGTACTTACACGACCCATGACGATGCAT
 CGAGCAGTGTCTCCACAGAGCCTACTCCTAGGTCTCTCTCAGCCCTGTCTGCTTATCATACTGGTTTGA
 TTGCACCAATGAAGATCCGCACCGAGGCCCTGGGAACCTGCGTCTGTACAGTGGGAGCCCAACTCGCAG
 TGAGAAAGAGCAGGTCTCCATCAGTTCTTCTATTACAAGGAACGGAAATCGAGGAGGTGGAAGAGTAAG
 CGGAAGGCTCTGACTCCGGCAACCAGCCATTAAGGCTGCTGGCAAGGTATCATCCAGGATGTCTCGT
 GCCTCCTTCCCGTTCATAAGTCTTGGGAGAGCTGTACATATTGAATGTGAACGACACTCAGGAGACATG
 TCAGAAGAATGCCACTTCTGCCATGCTTGTGGGAAGGAAGGATCTTGTCCAGGTTTGGTCCGCTGGCTACG
 GTAGCTACAGATCTTGCCTTGGGCCAAGTCTGACCCAGATTTGGAAACACCTTGGGCTCGACATCCAT
 TTGGGCGACAACCTGTGGAGTCCCTACTGGTCACTATTGCCAACTCCGAGATGTTTCCAGCTTGGCTAT
 GCTCTGTAGCGTGTGTTGAAGCCAGTCCCGCCCTCAGGGCTTACCAAACCTTTTGGGCCCTTCCCTAAT
 CGTCTTCTAATCTTGTGGTGTCCACAGCCGCTATCCAGCTTACCTCCTCGGGTCCGCTCCAGCA
 TGTGAGATCCAGGTTCAACACCGGTGGCTGGAACATAGCAGGAAGAGAGACAGAACACATATCTTACC
 TTGGGGGAGTCTTCCAGAGGAGCTCCGCTTTGGGAGTCTGACCTACAGTACCCCGGGAGCGGGAA
 CGAGACCAGCATGATAAAAAAAAAGGCTCCTGGACCCTGCCAATACCCAGCAGTTTACGACTTTAAGA
 AGTGTACGGAGAGATCCTTACCCTGGGGTCTGAGAGAGAAGCGAGCAGAAAGTGTGAAGTTTGTGTC
 CTGCCCTCCTGACCTCACAAGGGATCGAGTTTGGTGTGACTGCAGTCACTGTGCGAGCGAGGTCCTG
 GGCACCCAGTGCCTCATGCAAAGGCTTACCTTCCAGTGTGCCATCTGCCATGTGCCGTGCGGGGTT
 CATCCAACCTTCTGCTGACCTGTGGCATGGTGGCCACACGAGCCACATGATGGAGTGGTTTCGGACCCA
 GGAGGTATGTCCACGGGTGTGGCTGCCACTGCCTGCTGGAGAGCACCTTC

AG**CGGACCG**ACGCGTACGCGGCCGCTCGAG - GFP Tag - GTTTAA

Protein Sequence: >MG211357 representing BC066082
 Red=Cloning site Green=Tags(s)

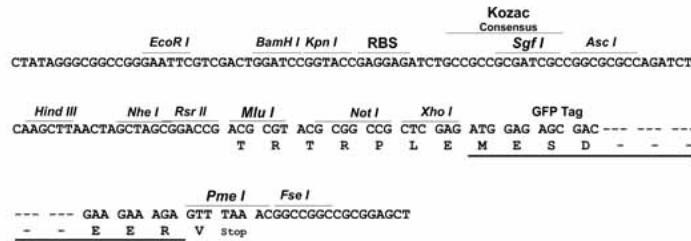
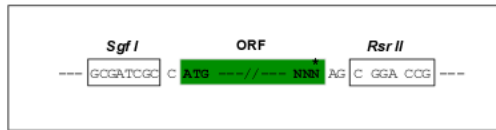
MAARWSSENVVVEFRDSQATAMSDVCLGQHAVLSGRRFLYIVNLDAPFEGHRKISRQSKWDIGAVQWNPH
 DSFAHYFAASSNQRVDLYKWKDGSGEVGTTLQGHTRVISDLDWAVFEPDLLVTSSVDTYIYIWDIKDTRK
 PTVALSAVAGASQVKNKNANYLATSHDGDVRIWDRKRPSTAVEYLAHL SKIHGLDWHPDSEHIFATS
 SQDNSVKFWDYRQPRKYLNILPCQVPVWKARYTPFSNGLVTVMVQPLRRENSLLLNASDLNAPVHTFVG
 HDDVVLEFQWRRQKEGSKDYQLVTWSRDQTLRMWRVDYQMORLCANDILDGVDEFIESISLLPEPEKTPH
 PQDIDHQPSLSHGEEAIAKEDPPSSLLEEKRSQGLPQTLQQEFSLINVQIRNVNEMDAADRSTVSV
 HCSNHRVKMLVTFPAQYPNNAAPSFQFINPTTITSAVKAKLLKILKDTSLQKVKRNQSCLEPCLRQLVSC
 LESFVNQEDSASSNPFALQNSVTPPLPTFARVTTAYGSYQDANIPFRTSGARFCGAGLYVYFTRPMTMH
 RAVSPTEPTPRLSALSAYHTGLIAPMKIRTEAPGNLRLYSGSPTRSEKEQVSISSFYKERSRWRKSK
 REGSDSGNRPIKAAGKVI IQDVSCLLPVHKS LGELYILNVNDTQETCQKNATSAMLVGRKDLVQVWSLAT
 VATDLC LGPKSDPDL ETPWARHPFGRQLLESLLAHYCLRDVQTLAMLCSVFEAQS R PQGLPNPFGFPFN
 RSSNLV VSHSRYPSTSSGSCSSMSDPGFNTGGWNIAGRETEHISSPWGESSPEELRF GSLTYS DPRERE
 RDQHDKNRLLDPANTQQFDDFKKCYGEL YRWGLREKRAEVLK FVSCPPDPHKGIEFGVYCSHCRSEVR
 GTQCAICKGFTFQCAICHVAVRGSSNFCLTCGHGGHTSHMMEWFRTEVCPTGCGCHCLESTF

SGPTRRRLE - GFP Tag - V

Restriction Sites: SgfI-RsrII

Cloning Scheme:

Cloning sites used for ORF Shuttling:

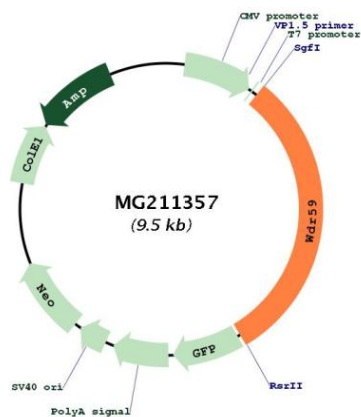


ACCN: BC066082

ORF Size: 2924 bp

OTI Disclaimer:	The molecular sequence of this clone aligns with the gene accession number as a point of reference only. However, individual transcript sequences of the same gene can differ through naturally occurring variations (e.g. polymorphisms), each with its own valid existence. This clone is substantially in agreement with the reference, but a complete review of all prevailing variants is recommended prior to use. More info
OTI Annotation:	This clone was engineered to express the complete ORF with an expression tag. Expression varies depending on the nature of the gene.
Components:	The ORF clone is ion-exchange column purified and shipped in a 2D barcoded Matrix tube containing 10ug of transfection-ready, dried plasmid DNA (reconstitute with 100 ul of water).
Reconstitution Method:	<ol style="list-style-type: none"> 1. Centrifuge at 5,000xg for 5min. 2. Carefully open the tube and add 100ul of sterile water to dissolve the DNA. 3. Close the tube and incubate for 10 minutes at room temperature. 4. Briefly vortex the tube and then do a quick spin (less than 5000xg) to concentrate the liquid at the bottom. 5. Store the suspended plasmid at -20°C. The DNA is stable for at least one year from date of shipping when stored at -20°C.
RefSeq:	BC066082 , AAH66082
RefSeq Size:	5137 bp
RefSeq ORF:	2924 bp
Locus ID:	319481
Cytogenetics:	8 E1
Gene Summary:	As a component of the GATOR subcomplex GATOR2, functions within the amino acid-sensing branch of the TORC1 signaling pathway. Indirectly activates mTORC1 and the TORC1 signaling pathway through the inhibition of the GATOR1 subcomplex. It is negatively regulated by the upstream amino acid sensors SESN2 and CASTOR1.[UniProtKB/Swiss-Prot Function]

Product images:



Circular map for MG211357

