

Product datasheet for **MG211333**

Vps54 (BC025012) Mouse Tagged ORF Clone

Product data:

Product Type:	Expression Plasmids
Product Name:	Vps54 (BC025012) Mouse Tagged ORF Clone
Tag:	TurboGFP
Symbol:	Vps54
Synonyms:	Vps54l, Hcc8
Mammalian Cell Selection:	Neomycin
Vector:	pCMV6-AC-GFP (PS100010)
E. coli Selection:	Ampicillin (100 ug/mL)



[View online »](#)

ORF Nucleotide Sequence:

>MG211333 representing BC025012
 Red=Cloning site Blue=ORF Green=Tags(s)

TTTTGTAATACGACTCACTATAGGGCGGCCGGAATTCGTGACTGGATCCGGTACCGAGGAGATCTGCC
 GCC**CGGATCGCC**

ATGGCTTCAAGCCACAGTCTTCTCCAGTGCCTCAAGGAAGCAGCAGTGTGTTTCTTTAAAAAGAGG
 TAGATCCAACAAAACACATTTCGACTGTGCAGTCACTGCCAGATGTGTGTCCAAGAACCCACAGTTAC
 AGATCAACATAGATGGACTGTGTATCATTCCAAGTAAATCTCCCAGCAGCATTAAATGATCCTACTACTA
 GCAAAAAGAGAATCTGACTTCTTCAAAAACTTGGGGATTGGACTTTGTGGACTGAAGTCATACCTT
 CACTCTACCTCCCACAGATCAGCAAGGAGAATTTATAGCATATCAGCAGGAGATCTCTCAGAGAGAGAA
 GATTTCATGAGAGATGCAAGAATATTTGCCTCCTAAAGATACCTTTGACAGGACTCTTTACATATTCAT
 GATAAATCCAGGACAGATCTGGAGCAAGTACCTAAGATTTTTATGAAACCAGATTTGCCTTGGATGATT
 CTTTAACTTTTAAATTCAGTTTACCATGGTCTCATTTTAACTGCTGGTGGGAAAGGAAGTCGCGACGC
 AGCTTCTTCCAAGTTGCTTCAGGAAAAGCTGAGCCATTATCTGGATATTGTGGAAGTAAACATTGCTCAC
 CAGATCTCTACGTTTCAGAAGCATTTCATGCAATGACCTCTCAACACGAATTGCAGGACTACCTCA
 AGAAAACCTACCCAGGCTGTAATAATGCTTCGAGATAAAATTGCACAGATTGATAAAGTTATGTGTGAAGG
 ATCACTACAGATTTTAAAGACTGGCACTTACCAGAAATAATTGTGTTAAAGTATACAATAAACTGAAGTTA
 ATGGCCACTGTACACCAAACCTCAGCCTACAGTGCAGGTGTTGTTATCTACTTCTGAATTTGTTGGAGCGT
 TGGACTTAATAGCAACAACCTCAAGAGGTTCTGCAGCAGGAGCTTCAGGGCATTACAGCTTCCGGCATT
 GGGATCACAGCTTTGTGAATTAGAAAAGCTGATTGATAAATGATGATTGCAGAATTTTCTACTTATTCT
 CATAGTGACTTAAATAGACCCTGGAAGGTGAATGCCAAGTTTGAAGAGGAAAGATTAGTATCTCTTG
 TATTTGGGCTTTTGAACAAGAAAACCTAATTTTTTGAATACTATGGTGAAGAAATGATTATTACAGC
 AAAGAACATCATTAAAGAGCGTGTGATTAATAAAGTTTCAAAAATAGAAGAAATAGACACAGACGTTGTT
 GTAAGGCTTGCAGATCAATGAGAATGTTGAATTTTCCCAAGTGGATTGATCTGTTAAAGGACATTTTCT
 CTAAGTTTACAGTTTCTACAGAGAGTTAAGGCAACATTGAATATTATCCACAGTGTGTTCTGTGCACT
 TCTTGAGAAAAGCCAAAGGACTAGAGAATTGGAAGAGATCCCACAGCAGAGGAGCGCTGGGAAGGACAGC
 TCCTTGGACACAGACGTGGCTTACCTGACACACGAGGGCTGGTTCATAAGTATGCTTTCAGTGAGGGTG
 AGCCAGCATCTGCGGCGTTGATACTACCTCTCAAAGAAACACGCTCTCCACATAGCGAGCCCTGCAGCAG
 TGATTCGGTATCAGAACCAGAATGTACTACTGATTCTTCATCCAGCAAGGAGCAGACATCAGCGTGTGCT
 CCTCCAGGAGGTATAGAGATTATAGTCAGTGAAGACATGAGGTTAACTGACTTGGAGCTAGGAAAAC TAG
 CAAGTAACATCCAGGAGTTACTGTGAATGCTTCAGATGTATGCCATGATCGAGCTGTCAAATTTCTCAT
 GTCAAGAGCAAAGGACGGTTTTCTTGAATAATGAATTCACGGAATTCATAGCACTCTCGAGATTAATG
 GAGACATTCATAGTGGACTGAACAGATCTGTGGGAGGAAGAGCACGCTCACTGCTTGGGGCCCTTCAGA
 GCCAAGCAAATAAGTTTGTGAACAGGTTTCATGAAGAGAGGGCGCAAGCTCAGCTCCTCTTAGACAA
 CGAGCGTTGGAAGCAGGCTGATGTTCTGCAGAATTTAGGATCTTGTGATTCTATAGCGGATGGAAAG
 ATTGCTTACCTGAAAAAAGCCAGTGGTTACAGAAGAAAGGAAGCCAGCTGATGTTCTTGTGTTGAGG
 GACACCAGTATGCAGTTGTGGAACCGTCTTGTGTTAATAAGAATCATTCTTGAATATTGCCAGTGTGT
 GGATAACATCCCCTCCGCTCACTACTGACATGCTCACTCGCCTGACAGATCTGCTGAAGTACTTCAATTC
 AGAAGTTGCCAGTTAGTTCTTGGAGCTGGTCTTTCGAAGTTGTTGGACTAAAAACAATTAATAAAAA
 ACTTGGCCCTCTTTCACGGTGTCTGCAGTTGATTGTGCACTACATTCCCGTGATCCGGGCTCACTTTGA
 AGCCGACTGCCCCCAAGCAATGGAGCATGCTTAGACATTTTGTACATCACAAAGGATTACCATGAT
 CATATAGCTGAAATTTAGCTAAGCTTGTAGCGATAATGGATAGCCTATTTGATAAGCTGTTATCAAAGT
 ATGAGGTGAAAGCTCCTGTTCTTCCCGTGTTCAGGAATTTGTAAGCAAATGACAAAAATGCATGA
 AGCTATATTTGATCTTCTCCGAAGAACAACACAGATGTTATTTTTAAGAATTAATGCAAGTTACAAA
 CTCACCTTGAAAAAACAGTTATCACACTAAATGTAATAAATGACGGAGGACCTCAAATGGGTTGGTCA
 CAGCAGATGTAGCTTTTACTGAAATCTTCAAGCCTTAAAGCCTTAAAGATCTGGATCTAAATAT
 GGCCGAGATCTGGGAACAGAAGAGG

ACGCGTACGCGGCCGCTCGAG – GFP Tag – GTTTAA

Protein Sequence: >MG211333 representing BC025012
 Red=Cloning site Green=Tags(s)

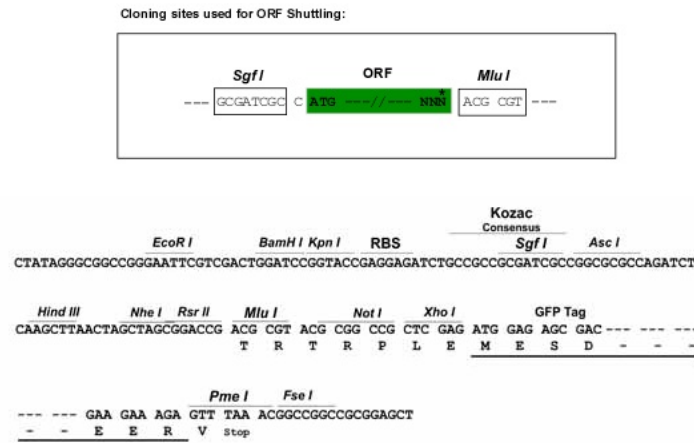
MASSHSSSPVPQGSSSDVFFKKEVDPTKHIRPVQSLPDVCPKEPTVTDQHRWTVYHSKVNLPAALNDPTL
 AKRESDFFTKTWGLDFVDEVIPSLYLPQISKENFIAYQQEISQREKIHCRCKNICPPKDTFDRTLLHHI
 DKSRDLEQVPKIFMKPDFALDDSLTFNSVLPWSHFNTAGGKGSRDAASSKLLQEKLSHYLDIVEVNI
 QISLRSEAFFHAMTSQHELQDYLKTTQAVKMLRDKIAQIDKVMCEGSLQILRLALTRNNCVKYVNLKLL
 MATVHQTOPTVQVLLSTSEFVGALDLIATTQEVLLQQELQGIHSFRHLGSQLELEKLDKMMIAEFSTYS
 HSDLNRPLEGECQVLEERLVSLVFGLLKQRKLNFLIYGEEMIITAKNIKERVINKVVSQIEEIDTDVV
 VKLADQMRMLNFPQWIDLKIDIFSKFTVFLQVRKATLNIHSSVLSVLEKSQRTRELEEIPQORSAGKDS
 SLDTDVAYLTHEGWFI SDAFSEGEPA SAAVDTT SQRNTSPHSEPCSSDSVSEPECTT DSSSSKEQTSACA
 PPGGIEIIVSEDMRLTDLELGKASNIQELLCNASDVCHDRAVKFLMSRAKDGFLKLNSTEFIALSRM
 ETFIVDTEQICGRKSTSLGALQSQANKFVNRHEERTKLSLLL DNERWKQADVPAEFQDLVDSIADGK
 IALPEKKPVVTEERKPADVLVVEGHQYAVVGTVLLLIRIILEYCQVDNIPSVTTDMLTRLTDLKLYFNS
 RSCQLVLGAGALQVVGKLTITTKNLALSSRCLQLIVHYIPVIRAHFEARLPPKQWSMLRHFHDHITKDYHD
 HIAEISAKLVAIMDSLFDKLLSKYEVKAPVSPCFRNICKQMTKMHEAIFDLLPEEQTQMLFLRINASYK
 LHLKKQLSHLNVINDGGPQNGLV TADVAFYTG NLQALGKLDLNLMAE IWEQKR

TRTRPLE - GFP Tag - V

Restriction Sites:

SgfI-MluI

Cloning Scheme:

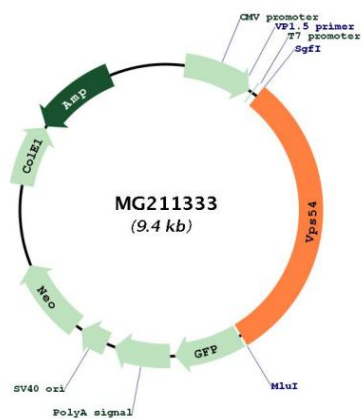


ACCN: BC025012

ORF Size: 2895 bp

OTI Disclaimer:	The molecular sequence of this clone aligns with the gene accession number as a point of reference only. However, individual transcript sequences of the same gene can differ through naturally occurring variations (e.g. polymorphisms), each with its own valid existence. This clone is substantially in agreement with the reference, but a complete review of all prevailing variants is recommended prior to use. More info
OTI Annotation:	This clone was engineered to express the complete ORF with an expression tag. Expression varies depending on the nature of the gene.
Components:	The ORF clone is ion-exchange column purified and shipped in a 2D barcoded Matrix tube containing 10ug of transfection-ready, dried plasmid DNA (reconstitute with 100 ul of water).
Reconstitution Method:	<ol style="list-style-type: none">1. Centrifuge at 5,000xg for 5min.2. Carefully open the tube and add 100ul of sterile water to dissolve the DNA.3. Close the tube and incubate for 10 minutes at room temperature.4. Briefly vortex the tube and then do a quick spin (less than 5000xg) to concentrate the liquid at the bottom.5. Store the suspended plasmid at -20°C. The DNA is stable for at least one year from date of shipping when stored at -20°C.
RefSeq:	BC025012.2
RefSeq Size:	3405 bp
RefSeq ORF:	2897 bp
Locus ID:	245944
Cytogenetics:	11 13.89 cM
Gene Summary:	Acts as component of the GARP complex that is involved in retrograde transport from early and late endosomes to the trans-Golgi network (TGN). The GARP complex is required for the maintenance of the cycling of mannose 6-phosphate receptors between the TGN and endosomes, this cycling is necessary for proper lysosomal sorting of acid hydrolases such as CTSD. Within the GARP complex, required to tether the complex to the TGN. Not involved in endocytic recycling.[UniProtKB/Swiss-Prot Function]

Product images:



Circular map for MG211333