

## Product datasheet for **MG211312**

### Ctdp1 (NM\_026295) Mouse Tagged ORF Clone

#### Product data:

Product Type:	Expression Plasmids
Product Name:	Ctdp1 (NM_026295) Mouse Tagged ORF Clone
Tag:	TurboGFP
Symbol:	Ctdp1
Synonyms:	4930563P03Rik; AW553592
Mammalian Cell Selection:	Neomycin
Vector:	pCMV6-AC-GFP (PS100010)
E. coli Selection:	Ampicillin (100 ug/mL)



[View online »](#)

**ORF Nucleotide Sequence:**

>MG211312 representing NM\_026295  
 Red=Cloning site Blue=ORF Green=Tags(s)

TTTTGTAATACGACTCACTATAGGGCGGCCGGGAATTCGTCGACTGGATCCGGTACCGAGGAGATCTGCC  
 GCC**CGGATCGCC**

ATGGAAGCGCCGCCCGCGCCGGCTCCACCGAGTGCCTCCGCGGTGGCCGGGCAGAGGTGCGCT  
 GCCCGGCCACGCGCTGCGTCTGCTGGAGTGAAGGTGGCGCGGGCGACCGTGCATCGGCTC  
 GGTGCTGGCAGTGTGCGAAACCGCAGCCTCCGCGCAGCCCGCAGGGCCGGCACCGGCTCGCGCGGCTCT  
 GGGGGTGCCTGCGCGCCGCGCGGACCGAGCGCAGGCTCAGGTCGGAGCGCGCGGCGTGGTCCGTGAAC  
 TGTGTGCGCAGCCAGGCCAGGTGGTGGCCCTGGAGCACTTCTGGTGAATTGGAAGGATGCAGCCATCC  
 TGTTGTCATGAAGGCCGTGTGTGCCAGTGTGGCCAGGACCTGACCCAGCTGCAGAGTAAAAATGGAAGG  
 CAGCAGGTCCCCCTTCCACAGCGACGGTTTCCATGGTGCACAGTGTCCGGAGTTGATGGTGAAGTCTG  
 AGCAAGCTGAGAACTAGGAAGAGAGGATCAGCAGCGACTACATCGAAACAGAAAATGGTTCTCATGGT  
 TGACTTGGACCAGACCCTGATTCATACGACTGAGCAGCACTGTCCCAGATGTCCAACAAAGGCATCTTC  
 CACTTCCAGCTGGGCCGGGGGAGCCCATGCTGCACACGCGCCTGAGGCCCTCACTGCAAGGATTTCTCGG  
 AGAAAATCGCAAAGCTGTATGAGCTGCACGTTTTACCTTCGGCAGCCGTCTGTATGCCACACCATCGC  
 AGGCTTTCTGGACCCGAGAAGAAGCTTTTTCTCATCGAATATTGTCTAGAGATGAATGTATTGACCCG  
 TTTTCTAAAACAGGAACTTAGAAATCTTTCCCTGTGGAGACTCAATGGTTTGCATCATCGATGACC  
 GAGAAGATGTGTGAAGTTCCGCCCTAACCTCATAACTGTGAAGAAGTACGTCTACTTCCAGGCACAGG  
 TGATGTGAATGCACCCCTGCAGCCCGGAACTCAGGCAAGGAGAAAAGTAAATCATTCTTCTAAGGGA  
 GGGGACGCTTGGAAACAGCTCTCTCCGTGAGGGACCTGAGGACGGCAGGCCCTGCTCCCGGGGTGGAGC  
 ACAGCAATGGCCTTGGGAAGGCCTCCCGAGAGCTCAATGGTGGTGAAGCTGTGCCAGGAGTTTTTCCAG  
 TAAAGCAGATGAGAAGGAAGCCTGGCCCTCACTCGGGCCTCTCCTGCCAGCAGCTCTAGTGGCCACGAG  
 CCAACTGAAGCTCCAGAGCTCCCTGTGTCTGTGAGTGGGATGGTCGGACAACGCCAGGGGTGCAGCCCA  
 CTCAGGGTGTGCGCCACCCAGGATTTGGACTTTGACCTGTCCAGCGACAGCGAGAGCAGCGAGAGCAG  
 CAGCAGGTGAGAAGTCCAGAGGCTCCAGCCCCCAGGAGAGAACAAAAGCAGCTCCAGAGCACAGTGGG  
 CCCCAGGACAGAGTGGGGCAGAGCTGCAGCAAGCCCCCTGGGAGAGTCTGGGCTAGCATCCACCCCC  
 ATGACAAAGGTCAGACCTGGACACTCAGGAGGAGGTGAACGGGACAGCCTCTGTGGCTGGGCAATGG  
 CAGTGTGGACCGAAAGAGGCTGAAACGGAATCCAGAACAGTGAAGCAGTCAAGTGTCACTGCAGGCGAG  
 TCCCTAGATCAGAGTGTGCGGGAGGAAGAGGAAGAGGACACAGACAGTGAACACTTGATACACCTCG  
 AGGAGATCCTGGTCCGAGTACACACTGACTATTACACAAAGTATGACAGATACCTCAACAAGGAGCTTGA  
 GGAAGCTCCAGATATACGGAAAATTGTGCCAGAGCTCAAGAGCAAGGTGCTCGCAGATGTGGCTGTGATA  
 TTCAGTGGGCTGCACCAACAACTTTCTGTGAAAAGACTCGCGAGCACTATCACGCCACGGCCCTGG  
 GAGCAAGGTCCTTACCCAGTGGTGTGAGCCCTGATGTCCAGACAGGGCCACTCACCTCATTGCAGC  
 ACGGGTGGTACAGAGAAGGTGCGCCAGGCACAGGAGTGCACACCTACATGTGGTCAAGCCTGATTGG  
 CTGTGGAGCTGCCTGGAGCGCTGGGACAAGGTGGAGGAGCAGCTTTCCCACTCATAGATGACGATACCC  
 GCACACATAGGGATAACAGCCCTGCAGTCTTTCCAGACAGACAGTGTGCTTCCAACAGCCTTGTTC  
 TCCAACACCCATCCATTCCAAGGCCATCCTGGTCCCAGGTTTCGGATCTATGACTCTAACACAGGCAAG  
 CTGATCCGGATGGGCCCCAGGGTCTGCACCAGCTCCCTCCAGTGGCCCACTTAACCATGGAGAGCCTT  
 CCTCCTTCAAGCTGTTAGCCACATCAGCAGCAAATGTTTGGTGAAGAGTTGCCAGAATCTCAAGATGG  
 AGAGCAGCTGGCCCTGCTAGAAGAAAGCGACAACCCAGTATGTCGAGGCAATGCCGTGTACTCTCTC  
 TGTAAGGAGGACTTAGAGAGTATGGACAAGAGGTGACGACATCCTTGGAGAGGGCAGTGTGACAGT  
 ACATCGAGAAGAAGAAGCCAGAAGACCAAGACAATGAGCAGGAGAGAGCCCCGAAGCCAGGAAGCCCCG  
 GGCTCCAGGGATCCGAAGAGAGCAGCCTGTAGGCTTGCCTCATCTGGCGAGAGGAGCACCCTGGCATG  
 CGTGGGCCAGAGGCCACAAGAGGAACTAAATGAGGAAGACGCTGCCAGCGAGTCCAGCGGGGAGTCCA  
 GCAACGATGATGAGGAGGCGAGCAGTTCAGAAGCAGATGAGATGGCCGCTGCTCTGGAGGCGGAGCTTAA  
 TGACCTCATG

**ACGCGT**ACGCGGCCGCTCGAG - GFP Tag - GTTTAA

Protein Sequence: >MG211312 representing NM\_026295  
 Red=Cloning site Green=Tags(s)

```
MEAPPAAGVPTECTPAVAGAEVRCPGPTPLRLLLEWKVAAGATVRIGSVLAVCETAASAQPAGPAPARAAS
GGCVRAARTERRLRSERAGVVRELCAQPGQVVAPGALLVRLEGCSHPVVMKGLCAECGQDLTQLQSKNGR
QQVPLSTATVSMVHSVPELMSVSEQAELKREDQQRLHRNRKL VLMVDLDQTLIHTTEQHCPQMSNKGIF
HFQLGRGEPMLHTRLRPHCKDFLEKIAKLYELHVFTFGSRLYAHTIAGFLDPEKKLFSHRILSRDECIDP
FSKTGNLRNLFPCGDSMVCIIDDREDVWKFAPNLI TVKKYVYFPGTGDVNAPPAARETQARRKVNHSSKG
GDALQALSVRDPEDGRPAPGVEHSNGLGASRELNGGEAVPGVFPKADKEKEAWPLTRASPSSSSGHE
PTEAPELPVSCWDGRTTPGVQPTQGDAAATQDLDFDLSSDSESSSSRSEGQRAPAPQERTKAAPEHSG
PQDTSGGRAAASPLGESGPSIHPHDKGSDLDTQEEGERDSL CGLNGSVDRKEAETESQNSEQSGVTAGE
SLDQSVGEEEEEDTDDDHLIHLEEILVRVHTDYTYKYDRYLNKELEEAPDIRKIVPELKS KVLADVAVI
FSLGHPTNFPVEKTREHYHATALGAKVL TQLV LSPDAPDRATHL I AARAGTEKVRQAQECKHLHVSPDW
LWSCLERWDKVEEQLFPLIDDDTRTHRDN SPAVFPDRHSVLPTALFHPTPIHSKAHPGPEVRIYDSNTGK
LIRMGPQGSAPAPSSAPLNHGEPSSFRVQPHQQQMFGEELPESQDGEQGPARRKRQPSMSEAMPLYTL
CKEDLESMDKEVDDILGEGSDDSDIEKKKPEDQNEQERAPKPRKPRAPGIRREQPVGLPSSGERSTPGM
RGRPRGHKRKLNEDDAASESSGESNDDEEGSSSEADEMAAALEAELNDLM
```

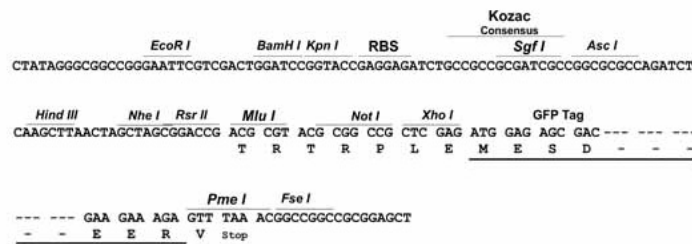
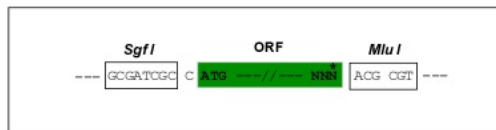
TRTRPLE - GFP Tag - V

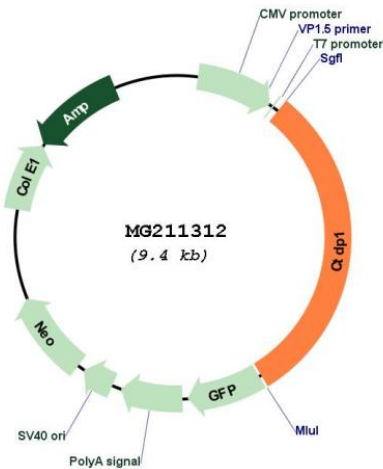
Restriction Sites:

SgfI-MluI

Cloning Scheme:

Cloning sites used for ORF Shuttling:



**Plasmid Map:**


**ACCN:** NM\_026295

**ORF Size:** 2880 bp

**OTI Disclaimer:** The molecular sequence of this clone aligns with the gene accession number as a point of reference only. However, individual transcript sequences of the same gene can differ through naturally occurring variations (e.g. polymorphisms), each with its own valid existence. This clone is substantially in agreement with the reference, but a complete review of all prevailing variants is recommended prior to use. [More info](#)

**OTI Annotation:** This clone was engineered to express the complete ORF with an expression tag. Expression varies depending on the nature of the gene.

**Components:** The ORF clone is ion-exchange column purified and shipped in a 2D barcoded Matrix tube containing 10ug of transfection-ready, dried plasmid DNA (reconstitute with 100 ul of water).

**Reconstitution Method:**

1. Centrifuge at 5,000xg for 5min.
2. Carefully open the tube and add 100ul of sterile water to dissolve the DNA.
3. Close the tube and incubate for 10 minutes at room temperature.
4. Briefly vortex the tube and then do a quick spin (less than 5000xg) to concentrate the liquid at the bottom.
5. Store the suspended plasmid at -20°C. The DNA is stable for at least one year from date of shipping when stored at -20°C.

**RefSeq:** [NM\\_026295.3](#)

**RefSeq Size:** 3700 bp

**RefSeq ORF:** 2883 bp

**Locus ID:** 67655

**UniProt ID:** [Q7TSG2](#)

**Cytogenetics:** 18 53.48 cM

**Gene Summary:** Processively dephosphorylates 'Ser-2' and 'Ser-5' of the heptad repeats YSPTSPS in the C-terminal domain of the largest RNA polymerase II subunit. This promotes the activity of RNA polymerase II. Plays a role in the exit from mitosis by dephosphorylating crucial mitotic substrates (USP44, CDC20 and WEE1) that are required for M-phase-promoting factor (MPF)/CDK1 inactivation (By similarity).[UniProtKB/Swiss-Prot Function]