

## Product datasheet for **MG211302**

### **Matn2 (BC005429) Mouse Tagged ORF Clone**

#### **Product data:**

Product Type:	Expression Plasmids
Product Name:	Matn2 (BC005429) Mouse Tagged ORF Clone
Tag:	TurboGFP
Symbol:	Matn2
Synonyms:	Crtm2; matrilin-2
Mammalian Cell Selection:	Neomycin
Vector:	pCMV6-AC-GFP (PS100010)
E. coli Selection:	Ampicillin (100 ug/mL)



[View online »](#)

**ORF Nucleotide Sequence:**

>MG211302 representing BC005429  
 Red=Cloning site Blue=ORF Green=Tags(s)

TTTTGTAATACGACTCACTATAGGGCGGCCGGAATTCGTCGACTGGATCCGGTACCGAGGAGATCTGCC  
 GCC**GCGATCGCC**

ATGGAGAAGATGTTGGTGGGATGCTTGCTGATGCTTGGCAGCTCTTCTTGTCTCCAGTTGACGGCA  
 GAGAGCGTCCCAAGCCAGGTTCCCTTCCAGAGCCGTCATGTCCGGATGTATCCGAGACTGCACTGCT  
 GGAGAGTTCCTGTGAGAATAAGCGGGCAGATCTGGTGTTCATCATTGACAGCTCCCGAAGTGTCAACACC  
 CATGACTATGCAAAGGTCAAGGAGTTCATTCTGGATATCCTGCAGTTCCTGGACATCGGTCTGATGTTA  
 CCCGAGTAGGCTGCTCCAATATGGCAGCACGGTCAAGAACGAGTTCCTCCTGAAGACCTTTAAGAGGAA  
 GTCTGAGGTGGAGAGGGCTGTCAAGAGAATGAGGCATCTATCCACTGGCACCATGACAGGGCTTGCCATC  
 CAATATGCCCTCAACATTGCCTTCTCAGAAGCAGAGGGGGCCAGGCCCTTGCGGGAAAATGTGCCACGCA  
 TCATAATGATTGTGACTGATGGGAGCCCTCAGGACTCGGTAGCTGAGGTAGCTGCCAAGGCCCGGAACAC  
 AGGCATCCTGATCTTTGCCATCGGTGTCCGTGAGGTGGACCTGAATACACTAAAGGCCATTGGGAGTGAG  
 CCCACAAGGACCATGTCTTCTGGTGGCAATTCAGCCAGATTGAGTCTTGACTCAGTGTTCAGAA  
 ACAAACTGTGCACAGTCCACATGTGCAGCATCTTGAACACAACCTGTGCCCACTTCTGCCTCAACACACC  
 TGGCTCGTACATCTGCAATGCAAGCAAGGGTACATTCTCAGCACGGATCAGAAGACTTGCAGAATCCAG  
 GATTTGTGTGCCACAGAGGACCATGGTTGTGAGCAGCTGTGCGTGAACATGTCTGGTTTCTTTGTCTGCC  
 AGTGCTACAGTGGCTACACCTTGGCTGAGGACGGGAAGCGATGTACCGCTGTGGACTACTGTGCCTCAGA  
 AAATCATGGATGTGAACACGAGTGTGAAATGCTGAAAGTTCTACCTGTGCCGGTGCCACGAGGGATTT  
 GCTCTTAACAGCGATAAGAAAACATGCTCAAAGATTGACTATTGTGCCTTCAAATCACGGATGTCAGC  
 ATGAGTGTGCAATGCCAGACGTCTGCTCTGCGGCTGCCTGAAAGGCTTCATGTAATCCAGACAG  
 GAAAACCTTGCCGAAGGATCAACTACTGTGCACTGAACAAACCAGGCTGTGAGCATGAGTGTGTGAACACA  
 GAGGAGGGTCACTACTGCCGCTGCCGTACAGGGCTACAATCTGACCCCAATGGCAAGACCTGCAGCCGGG  
 TGGACCACTGTGCACAGCAGGACCATGGCTGTGAGCAGCTGTGCCTGAACACAGAGGAGTCTTTGTCTG  
 CCAGTGTCTCAGAAGGCTTCTTATTAATGATGACCTCAAGACCTGCTCCAGGGCAGATTACTGCTTGCTG  
 AGCAACCATGGTTGTGAATACTCTGCGTCAACACAGACAATCCTTTGCCTGCCAATGTCTGAGGGTC  
 ATGTGCTCCGAAGCGATGGGAAGACCTGTGCAAACTGGACTCTTGTGCTTTGGGGGACCATGGTTGTGA  
 ACATTCATGTGTAAGCAGTGAAGACTCTTCGTGTGTCAGTGCTTTGAGGGGTACATTCTCGTGACGAT  
 GGAAGACCTGCAGAAGGAAAGATGTCTGCCAGGATGTTAACCATGGATGTGAGCACCTTTGTGTGAACA  
 GTGGCGAATCATACGTCTGCAAGTGTCTGGAGGGTTCCAGGCTGGCTGAGGATGGGAAGCGCTGCAGGAG  
 GAAGAATGTCTGCAAGTCAACCCAGCATGGCTGTGAGCACATGTGTGTGAACAATGGGAACCTCTATCTG  
 TGCAGGTGCTCAGAGGGCTTTGTCTAGCTGAGGATGGAAGCACTGCAAGAGATGCACTGAAGGCCCAA  
 TTGACCTGGTCTTTGTGATTGATGGATCCAAGAGCCTTGGAAGAGAAGTCTTGGAGACTGTGAAGCACTT  
 TGTCACTGGAATCATAGATTCTTGGCAGTTTCCCCAAAGCTGCTCGTGTGGGGCTGCTGCAGTATTCC  
 ACACAGGTCCGAACAGAGTTTACCCTGAGGGGCTTCAGCTCAGCCAAGGAAATGAAGAAAGCCGTGGCCC  
 ACATGAAATACATGGGCAAAGGCTCTATGACTGGGCTGGCCCTGAAACACATGTTTGAGAGAAGTTTTAC  
 CCAAGTAGAAGGGGCCAGGCCCCCTCCACGCAGGTACCCAGATAGCCATCGTGTTCACCGACGGACGG  
 GCTCAGGATGATGCTCTGAGTGGCCAGTAAAGCCAAGGCCAATGGTATCACTATGTATGCCGTTGGGG  
 TAGGAAAAGCCATTGAGGAAGAACTACAGGAGATTGCCTCTGAGCCATTGACAAGCATCTCTTCTACGC  
 TGAAGACTTCAGCACAATGGGCGAAAATAAGTAAAAGCTGAAAGAAGGCATCTGTGAAGCTCTAGAAGAC  
 TCTGGTGAAGACAGGACTCAGCAGCATGGGACCTGCCACAGCAGGCCACCAGCCAACAGAACCTGAGC  
 CAGTACCATAAAGATCAAAGACCTACTTTCTGTTCTAATTTTGCAGTGAACATAGATTCTGTTTGA  
 AGAAGACAATCTTTCACGGTCTACAAAAAATTTTCCATTCAACCAAATCTTCAGGAAACCTTTGGAA  
 GAAAGCCAGGACCAATGCAAATGTGAAAACCTTATACTGTTCCAGAACGTTGCAAATGAAGAAGTAAAGAA  
 AATTAACCCAGCGCTTAGAAGAAATGACTCAAAGAAATGGAAGCTTTGAAAATCGCCTAAAATACAGA

**ACGCGT**ACGCGGCCGCTCGAG - GFP Tag - GTTTAA

**Protein Sequence:** >MG211302 representing BC005429  
 Red=Cloning site Green=Tags(s)

MEKMLVGCLLMLGQLFLVLPVDGRERPQARFPSRGRHVRMYPQTALLESSCENKRADLVFIIDSSRSVNT  
 HDYAKVKEFILDILQFLDIGPDVTRVGLLQYGSTVKNEFSKTKFKRKSEVERAVKRMHLSTGMTGLAI  
 QYALNIAFSEAEGARPLRENVPRIMIVTDGRPQDSVAEVAAKARNTGILIFAIGVGQVDLNTLKAIGSE  
 PHKDHVFLVANFSQIESLTSVVFQNKLCVHMCSILEHNCAHFCLNTPGSYICKCKQGYILSTDQKTCRIQ  
 DLCATEDHGCEQLCVNMLGSFVCQCYSGYTLAEDGKRCTAVDYCASENHGCEHECVNAESSYLRCRHEGF  
 ALNSDKKTKCSKIDYCASSNHGCQHECVNAQTSALCRCLKGFMLNPDRKTCRRINYCALNPGCEHECVNT  
 EEGHYCRCRQGYNLDPNGKTC SRVDHCAQQDHGCEQLCLNTEESFVCQCEGFLINDDLKTC SRADYCLL  
 SNHGCEYSCVNTDKSFACQCPEGHVLRSDGKCTAKLDSCALGDHGCEHSCVSSSEDSFVCQCFEGYILRDD  
 GKTCRRKDVCQDVNHGCEHL CVNSGESYVCKCLEGFRLAEDGKRCCRKNVCKSTQHGCEHMCVNNGNSYL  
 CRCSEGFVLAEDGKHCKRCTEGPIDLVFVIDGSKSLGEENFETVKHFVTGIIDSLAVSPKAARVGLLQYS  
 TQVRTEFTLRGFS SAKEMKKAVAHMKYMGKGSMTGLALKHMFERSFTQVEGARPPSTQVPRVAIVFDGR  
 AQDDVSEWASKAKANGITMYAVGVGKAIEEELQEIASEPDKHLFYAEDFSTMGEISEKLKEGICEALE  
 SGRQRDSAAWDL PQQAHPTEPEPVTIKIKDLLSCSNFAVQHRFLFEEDNLSRSTQKLFHSTKSSGNPLE  
 ESQDQCKCENLILFQNVANEEVRKLTQRLEEMTQRMEALENRLKYR

TRTRPLE - GFP Tag - V

**Restriction Sites:** SgfI-MluI

**Cloning Scheme:**



**ACCN:** BC005429

**ORF Size:** 2870 bp

**OTI Disclaimer:** The molecular sequence of this clone aligns with the gene accession number as a point of reference only. However, individual transcript sequences of the same gene can differ through naturally occurring variations (e.g. polymorphisms), each with its own valid existence. This clone is substantially in agreement with the reference, but a complete review of all prevailing variants is recommended prior to use. [More info](#)

**OTI Annotation:** This clone was engineered to express the complete ORF with an expression tag. Expression varies depending on the nature of the gene.

**Components:** The ORF clone is ion-exchange column purified and shipped in a 2D barcoded Matrix tube containing 10ug of transfection-ready, dried plasmid DNA (reconstitute with 100 ul of water).

**Reconstitution Method:**

1. Centrifuge at 5,000xg for 5min.
2. Carefully open the tube and add 100ul of sterile water to dissolve the DNA.
3. Close the tube and incubate for 10 minutes at room temperature.
4. Briefly vortex the tube and then do a quick spin (less than 5000xg) to concentrate the liquid at the bottom.
5. Store the suspended plasmid at -20°C. The DNA is stable for at least one year from date of shipping when stored at -20°C.

**RefSeq:** [BC005429](#), [AAH05429](#)

**RefSeq Size:** 3273 bp

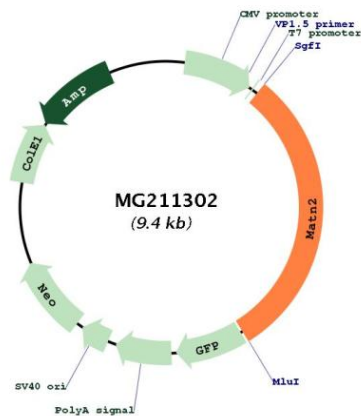
**RefSeq ORF:** 2870 bp

**Locus ID:** 17181

**Cytogenetics:** 15 B3.1

**Gene Summary:** Involved in matrix assembly.[UniProtKB/Swiss-Prot Function]

**Product images:**



Circular map for MG211302