

Product datasheet for **MG211296**

Thbs3 (NM_013691) Mouse Tagged ORF Clone

Product data:

Product Type:	Expression Plasmids
Product Name:	Thbs3 (NM_013691) Mouse Tagged ORF Clone
Tag:	TurboGFP
Symbol:	Thbs3
Synonyms:	Thbs-3; TSP3
Mammalian Cell Selection:	Neomycin
Vector:	pCMV6-AC-GFP (PS100010)
E. coli Selection:	Ampicillin (100 ug/mL)



[View online »](#)

Protein Sequence: >MG211296 representing NM_013691
 Red=Cloning site Green=Tags(s)

```
MEKPELWGV LALLLLCSYTCGSQDLQVIDLLTVGESRQMVAVAEKIRTALLTAGDIYLLSTFRLPPKQGG
VLFGLYSRQDNTRWLEASVVGKINKVLVRYQREDGKVHAVNLQQAGLADGRTHALLRLRGPSSRPSGLQ
LYVDCKLGDQHAGLPALAPIPPAEVSGLEIRTGQKAYLRMQGFVESMKIILGGSMARVGLSECFQGGD
SIHNAVTSALQ SILGEQTKALVTQLTLFNQILVELRDDIRDQVKEMSLIRNTIMECQVCGFHEQRSHCSP
SPCFRGVDCMEVYEPGYRCGPCPPGLQGNTHCDDINECAHADPCFPGSSCINTMPGFHCEACPPGYKG
TRVSGVGIDYARASKQVCNDIDECNDGNNGGCDPNSICTNTVGSFKCGPCRLGFLGNQSQCVCVPARTCHS
PAHSPCHIAHCLFERNGAVSCQCQNVGWAGNGVCGPDTDIDGYPDQALPCMDNNKHCKQDNCLLTPNSG
QEDADNDVGVDQCDADGDGKINVEDNCRLFPNKDQQNSDTSDFGDACDNCNPNVNDQKDTDNGEGD
ACDNDVDGDGIPNGLDNCPKVPNPLQTDREDEGVDGACDSCPEMSNPTQTADSDLVGDVCDTNE DSDGD
GHQDTKDNCPLPNSSQLDSDNDGLGDECDGDDNDGVPDYIPPGDNCRLVPNPNQKSDGNGVGDVCE
DDFDNDAVVDPLDVCPEAEVTLTDFRAYQTVILDPEDGAQIDPNWVVLNQGMEIVQTMNSDPGLAVGYT
AFNGVDFEGTFHVNTVTDDDYAGFLFSYQDSGRFYVVMWKQTEQTYWQATPFRAVAQPLQLKAVTSISG
PGEHLRNALWHTGHTPDQVRLWTDPRNVGWRDKTSYRWRLHRPQVGYIRVKLYEGPQLVADSGVIIDT
SMRGGRLGVFCFSQENI IWSNLQYRCNDTVPEDFEPFRRQLLQGRV
```

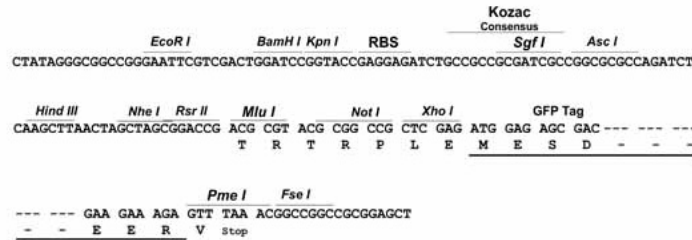
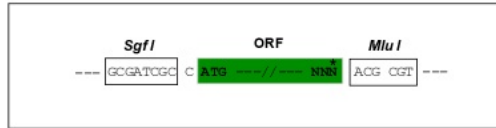
TRTRPLE - GFP Tag - V

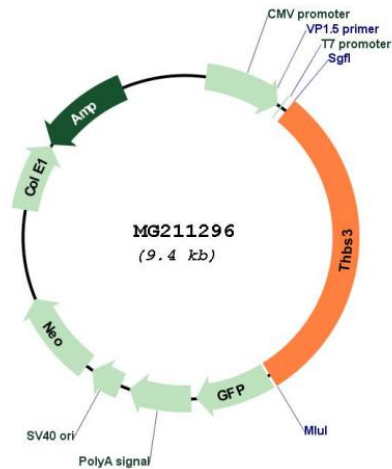
Restriction Sites:

SgfI-MluI

Cloning Scheme:

Cloning sites used for ORF Shuttling:



Plasmid Map:


ACCN: NM_013691

ORF Size: 2868 bp

OTI Disclaimer: The molecular sequence of this clone aligns with the gene accession number as a point of reference only. However, individual transcript sequences of the same gene can differ through naturally occurring variations (e.g. polymorphisms), each with its own valid existence. This clone is substantially in agreement with the reference, but a complete review of all prevailing variants is recommended prior to use. [More info](#)

OTI Annotation: This clone was engineered to express the complete ORF with an expression tag. Expression varies depending on the nature of the gene.

Components: The ORF clone is ion-exchange column purified and shipped in a 2D barcoded Matrix tube containing 10ug of transfection-ready, dried plasmid DNA (reconstitute with 100 ul of water).

Reconstitution Method:

1. Centrifuge at 5,000xg for 5min.
2. Carefully open the tube and add 100ul of sterile water to dissolve the DNA.
3. Close the tube and incubate for 10 minutes at room temperature.
4. Briefly vortex the tube and then do a quick spin (less than 5000xg) to concentrate the liquid at the bottom.
5. Store the suspended plasmid at -20°C. The DNA is stable for at least one year from date of shipping when stored at -20°C.

RefSeq: [NM_013691.3](#)

RefSeq Size: 3145 bp

RefSeq ORF: 2871 bp

Locus ID: 21827

UniProt ID: [Q05895](#)

Cytogenetics: 3 39.01 cM

Gene Summary:

Adhesive glycoprotein that mediates cell-to-cell and cell-to-matrix interactions. Can bind to fibrinogen, fibronectin, laminin and type V collagen.[UniProtKB/Swiss-Prot Function]