

## Product datasheet for **MG211288**

### Ctnna2 (BC079648) Mouse Tagged ORF Clone

#### Product data:

Product Type:	Expression Plasmids
Product Name:	Ctnna2 (BC079648) Mouse Tagged ORF Clone
Tag:	TurboGFP
Symbol:	Ctnna2
Synonyms:	AI481747; Catna; Catna2; cdf; chp
Mammalian Cell Selection:	Neomycin
Vector:	pCMV6-AC-GFP (PS100010)
E. coli Selection:	Ampicillin (100 ug/mL)



[View online »](#)

**ORF Nucleotide Sequence:**

>MG211288 representing BC079648  
 Red=Cloning site Blue=ORF Green=Tags(s)

TTTTGTAATACGACTCACTATAGGGCGGCCGGAATTCGTCGACTGGATCCGGTACCGAGGAGATCTGCC  
 GCC**CGCATCGCC**

ATGACTTCGGCAACTTCACCTATTATTTTAAAATGGGATCCCAAAGTTTGGAAATCCGGACACTCACAG  
 TGGAAAGACTATTGGAGCCACTTGTGACACAGGTGACAACACTTGTCAACACAAGCAACAAAGGTCGGTC  
 TGGTAAAAAGAAAGGGAGGTCAAAGAAAGCCCATGTGCTGGCAGCATCTGTAGAACAAGCTACTCAGAAC  
 TTCCTGGAAGGGTGAACAGATCGCTAAGGAGAGCCAAGACCTCAAAGAAGAGTTAGTGCTGTGTAG  
 AGGATGTGCGGAAGCAAGGTGAGACAAATGCGGATTGCCTCCTCAGAGTTTGCAGATGACCCTTGCTCTTC  
 TGTCAAGCGTGGCACCATGGTGCCTGCAGCAGGGCTCTGCTATCGGCTGTGACACGCTTGTCTATCCTG  
 GCCGACATGGCAGATGTCATGAGGCTTTTATCGCATCTGAAAATTGTGAGGAGGCCCTTGGAAAGCAGTCA  
 AAAATGCCACAAATGAACAAGACCTTGCAAACCGATTTAAAGAGTTTGGGAAAGAGATGGTAAAAGTAA  
 CTATGTAGCAGCAAGACGGCAGCAGGAGCTCAAGGACCTCACTGTAGGGATGAGATGGTGCAGCCCGT  
 GGAGCCCTGAAGAAGAATGCCACCATGTGTACACAGCCTCCCAAGCCTTCTCCGGCATCCAGATGTTG  
 CTGCTACAAGAGCCAACCGAGATTATGTATTTAAACAAGTCCAAGAGGCCATAGCTGGCATCTCCAGTGC  
 TGCTCAGGCCACCTCCCCACCGATGAAGCCAAAGGCCACACAGGCATCGGCGAGCTGGCTGCAGCCCTG  
 AATGAGTTTGATAATAAGATCATCTGGACCCCATGACATTACAGCGAGGCCAGGTTCCGACCATCCCTGG  
 AGGAGAGACTGGAGAGCATCATCAGTGGGGCTGCTCTCATGGCAGATTCTCTGCACACGTGATGACCG  
 CCGTGAGCGTATTGTGGCCGAGTGCAATGCAGTTCGACAGGCACTCCAGGACCTGCTAAGCGAGTACATG  
 AATAACACTGGAAGGAAAGAGAAAGGAGACCCTCTCAACATTGCGATTGACAAGATGACCAAGAAAACAA  
 GAGATCTGAGGAGACAGCTTCGGAAGCTGTGATGGATCACATCTCAGATTCTTTCTTGGAAACCAATGT  
 CCCCTTGCTGGTTCTCATTGAGGCTGCGAAGAGCGGGAATGAGAAGGAGGTGAAGGAATACGCCCAAGTT  
 TTCCTGAAACATGCCAACAAGCTGGTGGAGTTGCCAATTTGGCTTGTTCATCTCCAACATGAGGAAG  
 GGGTGAATTAGTCAGAAATGGCAGCCACCAGATTGACAGCCTGTGTCCCAAGTCATTAATGCTGCCCT  
 CACACTGGCTGCTCGGCCACAGAGTAAAGTTGCTCAGGACAACATGGATGTCTTCAAAGACCAGTGGGAA  
 AAGCAAGTCCGTGTGCTCACTGAGGCAGTGGATGACATCACCTCTGTGGATGACTTCTCTGTCTCAG  
 AAAACCATATCTGGAGGATGTGAACAATGTGTGATTGCCCTGCAAGAGGGAGATGTGGACACACTGGA  
 TCGCACAGCTGGGGCCATACGGGGCCGGCAGCCCGGTCATTACATCATCAATGCAGAGATCGAGAAC  
 TATGAAGCTGGGGTCTATACAGAGAAAGTCTGGAAGCCACAAAATTGCTTTCAGAAACAGTGTGCCAC  
 GCTTTGCTGAACAAGTTGAGGTGCCATCGAAGCCCTGAGCGCCAATGTCCCTCAGCCATTTCGAGGAGAA  
 CGATTCATCGATGCCTCGCGCCTGGTGTATGACGGTGTTCGGGACATCAGAAAGCTGTGCTGATGATC  
 AGGACTCCAGAAGAGCTAGAAGATGATTCCGACTTTGAGCAAGAGGATTATGTGCGGAGTCGGACAAGTG  
 TTCAGACAGAGGACGACCAGCTCATTGTGGACAGAGTGCACGGGCCATCATGGCGCAACTACCACAGGA  
 GGAGAAAGCAAAAATAGCTGAACAGGTGGAGATTTTCCACCAAGAAAAAGCAAGCTGGATGCTGAAGTG  
 GCCAAGTGGGATGACAGCGGCAATGACATCATTGTGCTGGCCAAGCAGATGTGTATGATCATGATGGAGA  
 TGACAGACTTCACAAGAGGCAAAGGCCACTGAAAAATACATCTGATGTCTTAATGCTGCCAAGAAGAT  
 TGCAGAAGCAGGCTCTCGAATGGACAAAATTAGCGCGCCTGTGGCTGATCAGTGTCTGATTGATGATG  
 AAGCAGGATTTATTAGCCTACCTCAGCGGATTGCTTTGACTGCCATCAGCTTAACATCTGCAGCAAAG  
 TGAAGGCCGAGGTTAGAACCTAGGAGGAGAGCTCATTGTGTCAGGGACAGGAGTTCAGAGCACTTTTAC  
 TACCTTTTATGAGGTAGATTGTGATGTCATAGATGGGGCAGGGCTAGTCAACTTTTACCCACCTCCCA  
 ACCTGTGCTGAGGGAGCTCCAATCGGGAGTGGAAGCAGTACTCCTCCATGCTGGACAGTGTACATCAC  
 TCATCCAGGCAGCCAAAACCTGATGAATGCTGTTGCTCCTCACGGTGAAGCGTCTTATGTAGCCTCAAC  
 TAAATACCAGAAGTCTATGGAACAGCAGCTGTCAACTCTCCAGTTGTGCTTGGAAAGATGAAGGCTCCT  
 GAAAAGAAGCCCTTGTGAAGAGAGAAAAGCCTGAAGAATTCAGACAAGAGTTAGACGGGGTCTCAA  
 AGAAACACATTTACCTGTGAGGCTTTAAGTGAATTCAGGCAATGGATTCTTTC

**ACGCGT**ACGCGGCCGCTCGAG - GFP Tag - GTTTAA

**Protein Sequence:** >MG211288 representing BC079648  
 Red=Cloning site Green=Tags(s)

MTSATSPIILKWDPKSLEIRTLTVERLLEPLVTQVTTLVNTSNKGPSGKKKGRSCKAHVLAASVEQATQN  
 FLEKGEQIAKESQDLKEELVAAVEDVRKQGETMRIASSEFADDPSSVVRGTMVRAARALLSAVTRLLIL  
 ADMADVMRLLSHLKIVEEALAVKNATNEQDLANRFKEFGKEMVKLNVAARRQQLKDPHCRDEMAAAR  
 GALKKNATMLYASQAFLRHPDVAATRANRDYVFKQVQEAIAIGISSAAQATSPTDEAKGHTGIGELAAAL  
 NEFDNKIILDPMTFSEARFRPSLEERLESIIISGAALMADSSCTRDRRERIVAECNAVRQALQDLLSEYM  
 NNTGRKEKGDPLNIAIDKMTKKTRDLRRQLRKAVMDHISDSFLETNVPLLVLEAAKSGNEKEVKEYAQV  
 FREHANKLVEVANLACSI SNNEEGVKLVRMAATQIDSLCPQVINAALTLAARPQSKVAQDNMDVFKDQWE  
 KQVRVLTEAVDDITSVDDFLSVSENHILEDVNCVIALQEGDVTDLDRTAGAIRGRAARVIHIINAEIEN  
 YEAGVYTEKVLKLLSETVMPRFAEQVEVAIEAL SANVPQPFEENEVIDASRLVYDGVDRIRKAVLMI  
 RTPEELEDSDFEQEDYVRSRTSVQTEDDQLIAGQSARAIMAQLPQEEKAKIAEQVEIFHQEKSKLDAEV  
 AKWDDSGNDIIVLAKQMCMIMMEMTDFTRGKGPLKNTSDVINAAKKIAEAGSRMDKLARAVADQCPDSAC  
 KQDLLAYLQRIALYCHQLNICKVKAQVNLGGELIVSGTGVQSTFTTFYEVDCDIVDGGASQLSTHLP  
 TCAEGAPIGSGSSDSSMLDSATSLIQAANKLMNAVVLTKASYVASTKYQKVVYGTAAVNSPVVSWKMKAP  
 EKKPLVKREKPEEFQTRVRRGSQKKHISPVQALSEFKAMDSF

TRTRPLE - GFP Tag - V

**Restriction Sites:**

SgfI-MluI

**Cloning Scheme:**

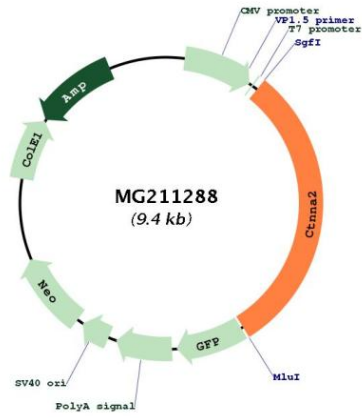


**ACCN:** BC079648

**ORF Size:** 2858 bp

<b>OTI Disclaimer:</b>	The molecular sequence of this clone aligns with the gene accession number as a point of reference only. However, individual transcript sequences of the same gene can differ through naturally occurring variations (e.g. polymorphisms), each with its own valid existence. This clone is substantially in agreement with the reference, but a complete review of all prevailing variants is recommended prior to use. <a href="#">More info</a>
<b>OTI Annotation:</b>	This clone was engineered to express the complete ORF with an expression tag. Expression varies depending on the nature of the gene.
<b>Components:</b>	The ORF clone is ion-exchange column purified and shipped in a 2D barcoded Matrix tube containing 10ug of transfection-ready, dried plasmid DNA (reconstitute with 100 ul of water).
<b>Reconstitution Method:</b>	<ol style="list-style-type: none"><li>1. Centrifuge at 5,000xg for 5min.</li><li>2. Carefully open the tube and add 100ul of sterile water to dissolve the DNA.</li><li>3. Close the tube and incubate for 10 minutes at room temperature.</li><li>4. Briefly vortex the tube and then do a quick spin (less than 5000xg) to concentrate the liquid at the bottom.</li><li>5. Store the suspended plasmid at -20°C. The DNA is stable for at least one year from date of shipping when stored at -20°C.</li></ol>
<b>RefSeq:</b>	<a href="#">BC079648</a> , <a href="#">AAH79648</a>
<b>RefSeq Size:</b>	4062 bp
<b>RefSeq ORF:</b>	2858 bp
<b>Locus ID:</b>	12386
<b>Cytogenetics:</b>	6 33.54 cM
<b>Gene Summary:</b>	May function as a linker between cadherin adhesion receptors and the cytoskeleton to regulate cell-cell adhesion and differentiation in the nervous system (PubMed:12123610, PubMed:15034585). Required for proper regulation of cortical neuronal migration and neurite growth. It acts as negative regulator of Arp2/3 complex activity and Arp2/3-mediated actin polymerization. It thereby suppresses excessive actin branching which would impair neurite growth and stability (By similarity). Regulates morphological plasticity of synapses and cerebellar and hippocampal lamination during development. Functions in the control of startle modulation (PubMed:12089526).[UniProtKB/Swiss-Prot Function]

Product images:



Circular map for MG211288