

Product datasheet for **MG211276**

Srrm1 (BC094322) Mouse Tagged ORF Clone

Product data:

Product Type:	Expression Plasmids
Product Name:	Srrm1 (BC094322) Mouse Tagged ORF Clone
Tag:	TurboGFP
Symbol:	Srrm1
Synonyms:	POP101, Srm160
Mammalian Cell Selection:	Neomycin
Vector:	pCMV6-AC-GFP (PS100010)
E. coli Selection:	Ampicillin (100 ug/mL)



[View online »](#)

ORF Nucleotide
Sequence:

>MG211276 representing BC094322
 Red=Cloning site Blue=ORF Green=Tags(s)

TTTTGTAATACGACTCACTATAGGGCGGCCGGGAATTCGTCGACTGGATCCGGTACCGAGGAGATCTGCC
 GCCCGCATCGCC

ATGGACGCGGGATTCTTCCGCGGAACAAGTGGGAGCAGGATAATCGGTTGAGCAACAAACAGAAGAAAC
 TCCTCAAGCAGCTGAAATTTGCAGAATGCTTAGAAAAAAGGTGGACATGAGCAAAGTAAATTTGGAGGT
 TATAAAGCCTTGATAACCAAAAAGAGTAACTGAGATCCTTGATTGCAAGATGATGTTGTCATTGAGTTT
 ATATTCACCAGCTGGAAGTGAAGAACCAGATTCAAAAATGATGCAAATCAACCTGACTGGGTTTTTGA
 ATGGGAAGAAATGCTAGAGAATTCATGGGAGAGCTGTGGCCCTGCTGTTGAGTGCACAAGAAAATATCGC
 CGGAATCCCTTCTGCTTCTAGAGTTGAAGAAGGAAGAGATAAAGCAGAGACAAATTGAACAAGAAAA
 TTGGCGTCTCTGAAAAACAAGATGAAGATAAAGATAAAGAGGATAAGGAAGAAAAGGAAAGCAGCAGAG
 AGAAGAGGGAGCGGTCTCGCAGCCCAAGAAGACGCAAATCCAGATCTCCTTCCCTTAGAAGACGATCTTC
 CCCTGTCAGGAGAGAGAAAAGCGCAGTCACTCTCGATCTCCCGTACAGAACCAAGAGCCGGAGCCCT
 TCCCTGCCCCAGAAAAGAGGAGAAATCTCCAGAGCTCCAGAGCCATCCGTGAGGATGAAGGACTCCT
 CAGTACAGGAGGCCACCTCTACAAGTGACATCTTGAAAGCTCCCAAGCCTGAGCCTGTACCAGAGCCCAA
 AGAACCTCTCCAGAAAAAATTCAAAAAGGAAAAGGAAAAGACTCGACCAAGATCTCGGTACAGATCC
 AAATCTCGGTCTCGGACCCGATCTCGATCACCTTCTCATACTAGACCAAGACGGAGACATAGATCCCGAT
 CAAGATCATACTCTCTAGAAGGCGGCCAAGCCCAAGACGACGACCATCTCCCGAAGAAGAACTCCACC
 AAGACGGATGCCTCCTCCACCAAGGCACCGGAGGAGTAGGTCTCCAGGGAGACGAAGGAGGCGTTCTTCC
 GCATCCCTGTCTGGAAGTAGCTCGTCGTCTCTCATCTCGTTCGCGTACCACCAAGAAACCTCCCA
 AGAGACATCCAGCCCTCCTCGAAAACGCGTAGGTTATCACCTCAGCAAGTCTCCACGGCAGAAGACA
 CCGGCCGTCTCCAGCAACTCCGCCACCCAACTCGCCATTCCCAACTCCCAAGCAGTCAAACCGT
 ACAAGAAAAAGTCGTGTTTCTGTGTCTCCAGGAAGAACCTCCGGTAAAGTGACAAAAACATAAAGGTA
 AGAAAAGAGAGTACCTTCTCCAGCACCAAGCCTAGAAAAGTGGAGCTGTCTGAGTCTGAAGAAGACAA
 AGGCAGCAAAATGGCTGCAGCTGATTCTGTGCAGCAGAGAAGACAATACCGACGGCAGAACCAGCAGTCT
 TCATCTGACTCTGGCTCCTTCCACCTCAGAAGATGAGCGGCCAAGAGATCCCATGTAAGAAGCGGTG
 AGGTAGGCAGGCGCGGAGACATTCCTTCTCGGAGTGCCTCTCCATCACCTCGAAAGCGCCAGAAAGA
 GACTTCCCTCGGATGCAGATGGGAAAGCGATGGCAGTACCAGTACTAAAAGTAGTAGAAGGAGGAGA
 AGTCCCTCTCCCTCCTGCCAGAAGGCGAAGGTCTCTTCTCCAGCCCTCCGCCGCCACCTCCCTCTC
 CTCTCTCGGGCGGCAGATCTCCACCCACCACCAGCAGCAAGGACCCTTCTCTCCCCACGCCCG
 CCGCTCACCGTCTCCAAGAAGATACTCTCTCCATTAGAGGAGATACTCTCTTCCCCCTCCAAAG
 AGGAGAACCGCTCCCCCGCCCGCCCAAGCGAAGGGCATACCATCTCCACCACCAAGCGCCGGG
 TCTCCACTCTCCACCTCCTAAACAAAGAAGCCCCACAGTACCAAGAGACGCTCGCCCTCCTTATCTTC
 AAAACATAGGAAAGGGTCTTCCCGAGCCGATCCACCCGGGAGGCCCGCTCACCACAACCAAAACAAACGG
 CATTGCGCCTCACCACGGCTCGGGTCTCAGACCTCAAGCCCTCCCTGTACGAAGAGGAGCTTCAG
 CGTCACCCCAAGGAAGGCAGTCCCATCTCCAAGTACTAGGCCTATTAGGAGAGTCTCCAGGACCCCGGA
 GCCAAAAAAGATAAAAAAGGCTGCCTACCAAGCCCTCAGTCCGTAAGAAGGGTTTCATCTTCCAGATCTG
 CCTCTGGATCTCTGAGCCAGCAGCTAAAAAGCCGCCAGCACCTCCCTCTCTGTGAGTCTCAGTACCC
 CTCCACAAACTGGTACCTGCAGTACCAGCAAAAAGGCTAAGAGCCCAACACCAAGCCTGTCCCCTGCC
 CGGAATTTCTGATCAAGAAGGAGGTGGGAAGAAAAAGAAAGAAAGGACAAGAAACACAAGAAGGATA
 AGAAACACAAGAAGCACAAAAACACAAGAAGGAGAGGCTGTGACCATAGCCACCCAGCTACTGCAGC
 CCCTGCAGCTGTTTCTGTGCCACCACCACATCAGCACAGGAAGAGCCTGCAGCAGCACCAGAGCCAGG
 AAGGAGACTGAGAGTGAAGCTGAAGATGACAACCTTGATGACCTAGAGAGGCACCTGCGGGAGAAGGCC
 TGCGGTCCATGCGGAAGGCTCAAGTGTCCACAGTCC

AGCGGACCGACGCGTACGCGGCCGCTCGAG - GFP Tag - GTTTAA

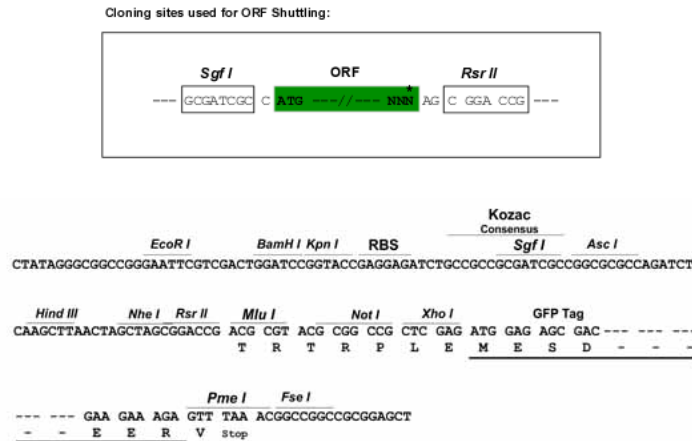
Protein Sequence: >MG211276 representing BC094322
 Red=Cloning site Green=Tags(s)

MDAGFFRGTSAEQDNRFSNKQKKLLKQLKFAECLEKKVDMKVNLEVIKPWITKRVTIELGFEDDVVIEF
 IFNQLEVKNPDSKMMQINLTGFLNGKNAREFMGELWPLLLSAQENIAGIPSAFLELKKKEIKQRQIEQEK
 LASLKKQDEDKDKRDKEEKESSREKRERSRSPRRRKSRSRSPRRRSPVRRERKRSHRSRSPRHRTKSRSP
 SPAPEKKEKSPELPEPSVRMKDSSVQEATSTSDILKAPKPEPVPEPKEPSPEKNSKKEKEKTRPRSRSRS
 KRSRTRRSRSPSHTRPRRRHRSRSRSYSPRRRPSRRRPSRRRTPPRRMPPPRHRSRSPGRRRRRSS
 ASLSGSSSSSSSRSPPKKPPKRTSSPPKTRRLSPSASPPRRRHRPSSPATPPPKTRHSPTPQQSNR
 TRKSRVSVSPGRTSGKVTKHKGTEKRESPPAPKPRKVELSESEEDKGSKMAAADSQQRRQYRRQNQQS
 SSDSGSSSTSEDERPKRSHVKNGEVGRRRRHSPRSASPSPRKRQKETSPRMQMGKRWQSPVTKSSRRRR
 SPSPPPARRRRSPSPAPPPPPPPPPRRRRSPTPPRRRTPSPPPRRRSPSPRRYSPIQRRYSPPPPK
 RRTASPPPPKRRASPSPPPKRRVSHSPPPKQRSPTVTKRRSPSLSSKHKRGSSPGRSTREARSPQPNKR
 HSPSPRPRAPQTSPPPVRGASASPOGRQSPSPSTRP IRRVSRTPPEPKIKKAAASPSTRP IRRVSRTP
 PKKIKKAAASPSQSVRRVSSRSVSGSPEPAAKKPPAPPSPVQSQSPSTNWSPAVPAKKAKSPTPLSPA
 RNSDQEGGGKKKKKKDKKHKKDKKHKKHKKHKKEKAVTIATPATAAPAAVSAATTTSAQEPAAPPEPR
 KETESAEDDNLDDLRLERHLREKALRSMRKAQVSPQS

SGPTRRRLE - GFP Tag - V

Restriction Sites: SgfI-RsrII

Cloning Scheme:

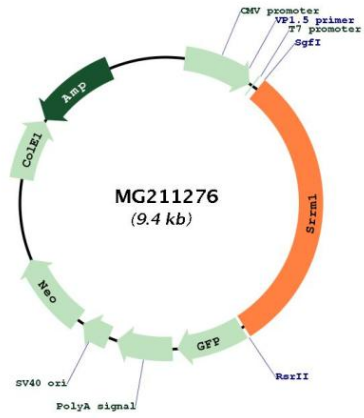


ACCN: BC094322

ORF Size: 2838 bp

OTI Disclaimer:	<p>Due to the inherent nature of this plasmid, standard methods to replicate additional amounts of DNA in E. coli are highly likely to result in mutations and/or rearrangements. Therefore, OriGene does not guarantee the capability to replicate this plasmid DNA. Additional amounts of DNA can be purchased from OriGene with batch-specific, full-sequence verification at a reduced cost. Please contact our customer care team at custsupport@origene.com or by calling 301.340.3188 option 3 for pricing and delivery.</p> <p>The molecular sequence of this clone aligns with the gene accession number as a point of reference only. However, individual transcript sequences of the same gene can differ through naturally occurring variations (e.g. polymorphisms), each with its own valid existence. This clone is substantially in agreement with the reference, but a complete review of all prevailing variants is recommended prior to use. More info</p>
OTI Annotation:	<p>This clone was engineered to express the complete ORF with an expression tag. Expression varies depending on the nature of the gene.</p>
Components:	<p>The ORF clone is ion-exchange column purified and shipped in a 2D barcoded Matrix tube containing 10ug of transfection-ready, dried plasmid DNA (reconstitute with 100 ul of water).</p>
Reconstitution Method:	<ol style="list-style-type: none">1. Centrifuge at 5,000xg for 5min.2. Carefully open the tube and add 100ul of sterile water to dissolve the DNA.3. Close the tube and incubate for 10 minutes at room temperature.4. Briefly vortex the tube and then do a quick spin (less than 5000xg) to concentrate the liquid at the bottom.5. Store the suspended plasmid at -20°C. The DNA is stable for at least one year from date of shipping when stored at -20°C.
RefSeq:	<p>BC094322.1</p>
RefSeq Size:	<p>3112 bp</p>
RefSeq ORF:	<p>2840 bp</p>
Locus ID:	<p>51796</p>
Cytogenetics:	<p>4 D3</p>
Gene Summary:	<p>Part of pre- and post-splicing multiprotein mRNP complexes. Involved in numerous pre-mRNA processing events. Promotes constitutive and exonic splicing enhancer (ESE)-dependent splicing activation by bridging together sequence-specific (SR family proteins, SFRS4, SFRS5 and TRA2B/SFRS10) and basal snRNP (SNRP70 and SNRPA1) factors of the spliceosome. Stimulates mRNA 3'-end cleavage independently of the formation of an exon junction complex. Binds both pre-mRNA and spliced mRNA 20-25 nt upstream of exon-exon junctions. Binds RNA and DNA with low sequence specificity and has similar preference for either double- or single-stranded nucleic acid substrates.[UniProtKB/Swiss-Prot Function]</p>

Product images:



Circular map for MG211276