

Product datasheet for **MG211272**

Ror2 (NM_013846) Mouse Tagged ORF Clone

Product data:

| | |
|---------------------------|---|
| Product Type: | Expression Plasmids |
| Product Name: | Ror2 (NM_013846) Mouse Tagged ORF Clone |
| Tag: | TurboGFP |
| Symbol: | Ror2 |
| Synonyms: | mRor2; Ntrkr2 |
| Mammalian Cell Selection: | Neomycin |
| Vector: | pCMV6-AC-GFP (PS100010) |
| E. coli Selection: | Ampicillin (100 ug/mL) |



[View online »](#)

ORF Nucleotide Sequence:

>MG211272 representing NM_013846
 Red=Cloning site Blue=ORF Green=Tags(s)

TTTTGTAATACGACTCACTATAGGGCGGCCGGGAATTCGTCGACTGGATCCGGTACCGAGGAGATCTGCC
 GCC**CGGATCGCC**

ATGGCTCGGGGCTGGGTGCGGCCGAGCCGTGTGCCTCTGTGCGCCCGGGCCGTCTGGACGGCTGCGGCGC
 TCCTGCTCTGGACACCCTGGACGGCAGGTGAAGTGGAAGATTCGGAGGCAATCGACACCCTGGGACAACC
 TGATGGACCGGACAGCCCACTTCCCACTCTGAAAGGCTACTTTCTGAATTTCTGGAGCCAGTCAACAAT
 ATCACCATTGTTCAAGGCGAGACGGCAATCCTGCACTGCAAGGTGGCGGAAACCCACCTCCCAATGTGC
 GGTGGCTGAAGAATGATGCCCGGTTGTGCAAGAGCCACGAAGGGTCATCATCCGGAAGACAGAATACGG
 CTCCCGGCTGCGGATCCAAGACCTGGACACAACAGACACAGGCTACTACCAGTGTGTGGCTACCAACGGG
 CTGAAGACCATCACTGCCACTGGGTTCTATATGTGCGGCTCGG[AT]CCGACGCACAGCCCGAACCACA
 ATTTTCAGGATGACGATCAGGAAGATGGCTTCTGCCAGCCGTACCGAGGGATCGTTGTGCGCGCTTCAT
 TGGGAACCGGACTATTTATGTGGACTCCCTCCAGATGCAGGGGAGATTGAAAACCGAATCACAGCTGCC
 TTCACCATGATCGGCACCTCCACGCAACTGTCAGACCAGTGTTCACAGTTTGCCATCCCATCCTTCTGCC
 ACTTCGTCTTCCCTCTGTGCGACGCACGCTCCCGGGCGCCCAAGCCTCGGGAACGTGCGCGGGATGAATG
 TGAGGTGCTGGAGAACGACCTGTGCCCGCAGGAGTACACCATCGCCCGCTCCAACCCGCTCATCCTCATG
 CGGCTCCAGCTGCCAAGTGCGAAGCGCTGCCATGCCGAGAGCCCGGATGCTGCGAACTGCATGCGCA
 TCGGGATCCCGGGCGAGAGGCTGGTTCGCTACCACAGTGTACAACGGCTCTGGCGCCGATTACAGGGG
 GATGGCCAGTACCACCAAGTCAGGCCACAGTGTACGCTTGGGCTCTGCAGACCCCCACAGCCATCGC
 CTATCCAGCACGGAATCCCTGAGCTGGGAGGAGCCATGCCTACTGCCGAACCCCGGGGGCCAGATGG
 AAGGCCGTGGTGTCTTACGCGAATAAAAACGTACGCGTGGAACTGTGTGACGTACCCCGTGTATGCC
 CCGAGATGGCAGCAAGATGGGGATTCTGTACATCCTGGTCCCGCAGCATTGCCATCCCCCTGGTTCATCGCT
 TGCTGTCTTCCCTCGTCTGCATGTGCCCAACAAACAGAAGGCTTCGGCCTCCACCCACAGCGCCGGC
 AGCTGATGGCCTCGCCAGCCAGGACATGGAGATGCCACTCATCAGCCAGCACAACAGGCCAAACTCAA
 AGAGATCAGCTTGTCCACAGTGAAGTTCATGGAGGAGCTCGGGGAGGACCGGTTTGGCAAGGTCTACAAA
 GGCCACCTGTTCCGGGCTGCCCCAGGAGAACCCACCCAGGCCGTGGCCATCAAGACGCTGAAAGACAAGG
 CTGAGGGGCCCTGCGGGAGGAGTTCGGCAAGAGGCGATGCTCCGGGCCGACTGCAGCACCCCAACAT
 CGTCTGCCTCCTAGGCGTCGTGACCAAGGACCAACCCTTGAGCATGATCTTCAGTACTGTTCCCATGGC
 GACCTCCATGAGTTCCTGGTTCATGCGCTCGCCGACTCCGATGTGGGCAGCACCGATGACGACCGCACCG
 TGAAGTACGCCCTGGAGCCCGGACTTCGTGCACGTGGTGGCGCAGATCGCTGCGGGGATGGAGTTCCT
 GTCCAGCCACCACGTGGTCCATAAAGACCTGGCCACACGCAATGTGCTGGTGTACGACAAGCTGAACGTG
 AGGATCTCAGACTTGGGCTCTTCCGTGAGGTATACTCCGAGATTAACAACACTCATGGGCAATTCAC
 TGCTGCCATCCGCTGGATGTCCCCGAGGCCGTATGTATGAAAGTTCATCGACTCTGACATCTG
 GTCCTACGGTGTGGTCTCTGGGAGTCTTTAGCTACGGCCTGCAGCCCTACTGTGGTACTCCAACCG
 GACGTGGTGGAGATGATCCGGAGCCGGCAGGTGCTGCCCTGTCCGGATGACTGCCCGCTGGGTCTATG
 CCCTCATGATTGAATGCTGGAATGAGTTCCTCAAGCCGGAGGCCCGCTTTAAGGACATCCACAGCCGGCT
 CCGGTCTGGGGCAACCTATCCAACATAAATAGTTCCGCGCAGACCTCAGGAGCCAGCAACACCACACAG
 ACCAGCTCCCTGAGCACAGCCCTGTAAGCAATGTGAGCAATGCCGCTATATGGCCCCAAGCAGAAGG
 CCCAGCCCTTCCACAGCCTCAGTTCATCCCCATGAAGGGTCAGATCAGACCCTTGGTGCSCCGCACA
 GCTGTACATCCCGGTGAACGGCTATCAGCCGTTACCGGCATACGGGGCTACCTGCCAACTTCTACCCA
 GTCCAGATCCCCATGCAGATGGCCCCACAGCAGGTGCCCTCAGATGGTCCCCAAGCCGAGCTCACACC
 ACAGTGGCAGCGGCTCCACCAGCACTGGTACGTACCACGGCGCCCTCCAATACATCTGTGGCGGACAG
 GGCGGCCCTACTCTGAGGGCACCGAGGATGCACAGAACATCGCGGAAGACGTGGCCAGACCCCTGTG
 CAGGAAGCAGAGGAGGAGGAGGGGTCTGTCCCTGAGACTGAACTCCTGGGAGACAATGACACGCTCC
 AGGTGACCGAGGGGCTCATGTCCAGCTTGAAGCC

AC**GGGCCGCT**CGAG - GFP Tag - GTTTAA

Protein Sequence: >MG211272 representing NM_013846
 Red=Cloning site Green=Tags(s)

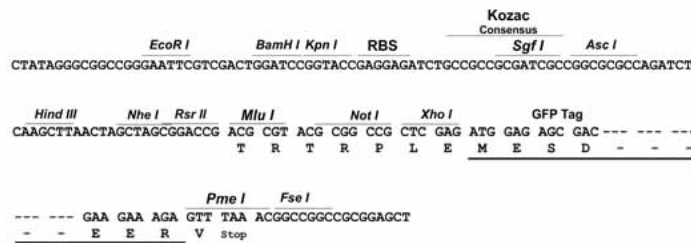
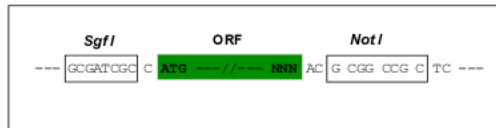
MARGWVRPSRVPLCARAVWTAALLLWTPWTAGEVEDSEAIDTLGQPDGPDSPPLTLKGYFLNFLEPVNN
 ITIVQGQTAILHCKVAGNPPPNVRWLKNDAPVVQEPRRVIIRKTEYGSRLRIQDLDTDTGGYQC
 VATNG LKTITATGVLVYRLXXPTHSPNHNFDQDDQEDGFCQPYRGIACARFIGNRTIYVDSLQMQ
 GEIENRITAAFTMIGTSTQLSDQCSQFAIPSFCHFVFLPCDARSRAPKPRELCRDECEVLENDL
 CRQEYTIARSNPLILMLRQLPKCEALPMPESPDAANCMRIGIPAERLGRYHQCYNGSGADYRGMAS
 TTKSGHQCPWALQHPHSHR LSTEFPELGGGHAYCRNPGGQMEGPWCFTQNKVNRVELCDVPPC
 SPRDGSKMGILYILVPSIAIPLVIA CLFFLVCMCRNKQKASASTPQRRQLMASPSQDMEMPLI
 SQHKQAKLKEISLSTVRFMEELGEDRFKGVYK GHLFGPAPGEPTQAVAIKTLKDKAEGPL
 REEFRQEAMLRARLQHPNIVCLLGVVTKDQPLSMIFYCSHG DLHEFLVMRSPHSDVGS
 TDDRTVKSALEPPDFVHVVAQIAAGMEFLSSHHVVHKDLATRNVLVYDKLNV RISDLGL
 FREVYSADYYKLMGNSLLPIRWMSP EAVMYGKFSIDSDIWSYGVVLEWVFSYGLQPYCGY
 SNQ DVVEMIRSQVLPDPCPAWVYALMIECWNEFP SRRRPFKDIHSRLRSWGNLSNYNSSA
 QTS GASNTTQTSSLSTSPVSNVSNARYMAPKQKAQPFQPFIPMKGQIRPLVPPAQLYIPV
 NGYQPVPAYGAYLPNFYF VQIPMQMAPQQVPPQMPKPSHHSGSGSTSTGYVTTAPSNTSV
 ADRAALLSEGTEDAQNIAEDVAQSPV QEAEIEEEGSVPETELLGDNDTLQVTEAAHVQLEA

TRPLE - GFP Tag - V

Restriction Sites: SgfI-NotI

Cloning Scheme:

Cloning sites used for ORF Shuttling:

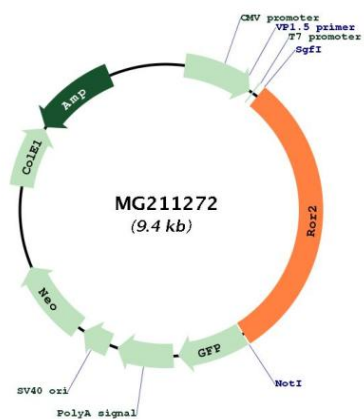


ACCN: NM_013846

ORF Size: 2835 bp

| | |
|-------------------------------|--|
| OTI Disclaimer: | <p>Due to the inherent nature of this plasmid, standard methods to replicate additional amounts of DNA in E. coli are highly likely to result in mutations and/or rearrangements. Therefore, OriGene does not guarantee the capability to replicate this plasmid DNA. Additional amounts of DNA can be purchased from OriGene with batch-specific, full-sequence verification at a reduced cost. Please contact our customer care team at custsupport@origene.com or by calling 301.340.3188 option 3 for pricing and delivery.</p> <p>The molecular sequence of this clone aligns with the gene accession number as a point of reference only. However, individual transcript sequences of the same gene can differ through naturally occurring variations (e.g. polymorphisms), each with its own valid existence. This clone is substantially in agreement with the reference, but a complete review of all prevailing variants is recommended prior to use. More info</p> |
| OTI Annotation: | This clone was engineered to express the complete ORF with an expression tag. Expression varies depending on the nature of the gene. |
| Components: | The ORF clone is ion-exchange column purified and shipped in a 2D barcoded Matrix tube containing 10ug of transfection-ready, dried plasmid DNA (reconstitute with 100 ul of water). |
| Reconstitution Method: | <ol style="list-style-type: none"> 1. Centrifuge at 5,000xg for 5min. 2. Carefully open the tube and add 100ul of sterile water to dissolve the DNA. 3. Close the tube and incubate for 10 minutes at room temperature. 4. Briefly vortex the tube and then do a quick spin (less than 5000xg) to concentrate the liquid at the bottom. 5. Store the suspended plasmid at -20°C. The DNA is stable for at least one year from date of shipping when stored at -20°C. |
| RefSeq: | NM_013846.3 , NP_038874.3 |
| RefSeq Size: | 3987 bp |
| RefSeq ORF: | 2835 bp |
| Locus ID: | 26564 |
| Cytogenetics: | 13 27.68 cM |

Product images:



Circular map for MG211272