

## Product datasheet for **MG211253**

### Hdac7 (NM\_019572) Mouse Tagged ORF Clone

#### Product data:

Product Type:	Expression Plasmids
Product Name:	Hdac7 (NM_019572) Mouse Tagged ORF Clone
Tag:	TurboGFP
Symbol:	Hdac7
Synonyms:	5830434K02Rik; HD7; HD7a; Hdac7a; mFLJ00062
Mammalian Cell Selection:	Neomycin
Vector:	pCMV6-AC-GFP (PS100010)
E. coli Selection:	Ampicillin (100 ug/mL)



[View online »](#)

**ORF Nucleotide Sequence:**

>MG211253 representing NM\_019572  
 Red=Cloning site Blue=ORF Green=Tags(s)

TTTTGTAATACGACTCACTATAGGGCGGCCGGGAATTCGTCGACTGGATCCGGTACCGAGGAGATCTGCC  
 GCC**GCGATCGCC**

ATGCACAGCCCCGGCGGGCTGCCTGCCTCCAGCCAGACACACCAGGCTCTCAGCCCCAACCCATGG  
 ACCTGCGGGTGGGCCAGCGGCCACGGTGGAGCCCCACCAGAGCCTGCGCTGCTGACCCTGCAACACCC  
 CCAACGCCTGCACCGCCATCTTCTTCTGCGAGGCTTACACCAGCAACAGCGCTCAGCCGAGCCCATGAGG  
 CTCTCCATGGACCACCAATGCCGGAGCTGCAGGGGGACAGCAGGAGCAAGAATTCGGCAACTTCTCA  
 ATAAGACAAGAGCAAGCGAAGTCCGTAGCCAGCAGTGTGGTCAAGCAGAAGCTGGCTGAAGTGATCCT  
 GAAGAAACAGCAGGCAGCCCTTGAGAGAACAGTCCATCCCAGCAGCCCCAGTATTCCTACAGAACTTT  
 GAGCCCTTGGACACAGAGGGTGTGCCCGCTCCGTGCTTAGCAGCTTCTGCCTCCTGTTCCAGCCTGC  
 CCACTGAACCCCCGGAACACTTTCCCTTGCCTAAAACAGTGTCTGAACCCAACTGAAGTTGCGCTACAA  
 ACCCAAGAAATCCCTGGAGAGACGAAGAATCCCCTGCTCAGGAAGGAGAGTGCCCGGCCAGCCTTCGG  
 AGGAGGCCTGCCGAGACCCTTGGAGATTCTCCCCAGTAGTAGCAGCACACCCGCGTCAGGGTGCAGCT  
 CCCCTAATGACAGCGAGCATGGCCCTAACCTGCCCTAGGCTCAGAGGCTGATGGTGACCGCAGGACCCA  
 TTCAACTTTAGGCCCTCGGGTCTGTACTGGGAACCCCATGCTCCCCTTCTCCTGCACCACGGTCTG  
 GAGCCAGAGGCTGGGGCACCTTACCCTCTCGCTGCAACCCATTCTCCTGCTGGACCCCTCAGTCTCTC  
 ATGCCCACTGTGGACTGTGCCTGGCCTTGGGCCCTTGCCTTCCACTTTGCCAGCCCTTACTGACCAC  
 CGAGCGGCTCTCTGGGTGAGCCTCCATCGACCACTTAACCGACCCGCTCAGAGCCCTGCCCCACAG  
 GCCACAGCCTCCCTCTGCTGGCCCCCTGCAGCCCCGCCAGGATCGGCTCAAACCTCACGTCCAGCTGA  
 TCAAGCCAGCCATCTCCCTCCCAGAGCCTGCCAAGCCAGTGAGAAGCCCGACTGCGACATACC  
 CTCGGCTGAGGACCTAGAGACAGATGGTGGGGAGTGGGACCTATGGCGAATGATGGCCTGGAACATAGG  
 GAGTCAGGCCGTGGCCTCCTGAGGGCAGAGGCTCCATTTCTCTGCAGCAGCATCAACAGGTGCCACCT  
 GGGAGCAGCAGCATCTAGCCGGCGGCTCTCTCAGGGAAGCCCCGGGACTCCGTGCTGATACCTCTGGC  
 CCAGGTTGGACACCGGCCCTGTCCAGAACCAGTCTTCCCAGCAGCACCTGTCTCCCTGCTGAGCCCA  
 GAGCCACCTGTGACACCAAGTCTCAACAGCTCAGAGACCTGTACAGGGCTGGTCTATGACTCGG  
 TGATGCTGAAACACCAATGTTCTGTGGAGACAACAGCAAGCATCCCGAGCATGCAGGCCGATCCAGAG  
 CATCTGGTCCCGCTGCAGGAACGGGTCTCCGACCCAGTGTGAGTGTCTCCGAGGCCGAAAGGCTTCC  
 CTAGAGGAGCTGCAGTCACTCTGAACGGCAGTGTCTCTACGGCACGAACCCACTCAGCCGCC  
 TCAAACCTGGATAACGGGAAGCTTACAGGACTCCTGGCACAGCGGACGTTTGTGATGCTACCCTGTGGCGG  
 GTTGGGGTGGATGACTGACACCATCTGGAACGAGCTGCATTCCTCCAATGCAGCCCGCTGGGCTGCGGGC  
 AGTGTACCGACCTTGCCTTCAAAGTAGCTTCCCAGAGCTGAAGAATGGCTTTGCTGTGGTGGCAGCCC  
 CGGGACACCATGCAGATCATTCTACAGCATGGGCTTCTGCTTCTCAACTCCGTGGCCATCGCCTGCCG  
 ACAGCTACAGCAACACGGCAAAGCCAGCAAGATCCTCATTGTTGACTGGGATGTTACCATGGCAACGGC  
 ACACAGCAGACTTCTACCAGGACCCAGTGTGCTCTACATTTCCCTTATCGCCATGACGACGGCAACT  
 TCTTCCAGGCAGTGGGGCCGTGGATGAGGTGGAACTGGCAGTGGCGAGGGCTTCAATGTCAACGTGGC  
 TTGGGCTGGGGCTTGGATCCACCCATGGGGATCCTGAGTACCTGGCTGCTTTTCAAGATAGTGGTGATG  
 CCCATTGCCCAGAGTTTGTCCAGACCTGGTCTGCTGCTGGGTTTGTGCTGCGGAGGGTACCC  
 CAGCCCCGCTGGGTGGCTACCATGTTTCTGCCAATGTTTGGGTACATGACGCAGCAGTTGATGAACTT  
 GGCAGGAGGCGCCGTGGTGTGGCCTTAGAGGGTGGACATGACCTCACGGCCATCTGTGATGCCTCGGAG  
 GCCTGTGTAGTGTCTTCTGGGCAACAAGGTGGACCCCTTTCAGAAGAAAGCTGGAAACAGAAACCCA  
 ACCTCAGTGCCATCCGCTCGCTGGAAGCTGTGGTCAAGGTGCACAGGAAATACTGGGGCTGCATGCAGCG  
 CTTGGCCTCCTGTCCAGACTCCTGGCTACCCAGAGTGCCGGGAGCTGATGCAGAAGTGAAGCCGTGACC  
 GCGCTGGCATCCCTTTCTGTGGCATCCTGGCTGAAGACAGGCCCTCGGAGCGGCTGGTGAAGAGGAAG  
 AACCCATGAACCTC

**ACGCGT**ACGCGGCCGCTCGAG – GFP Tag – GTTTAA

**Protein Sequence:** >MG211253 representing NM\_019572  
 Red=Cloning site Green=Tags(s)

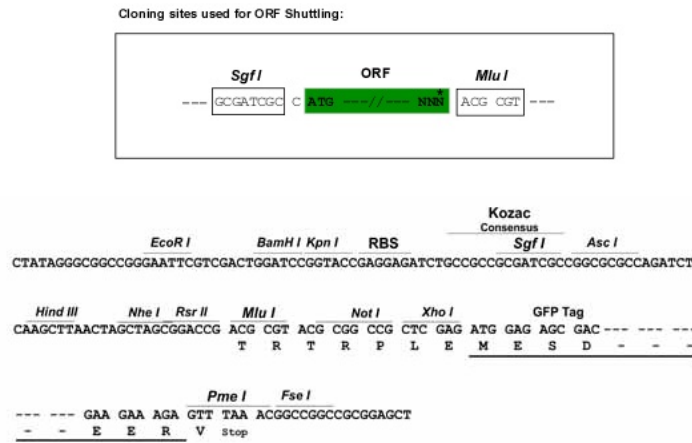
MHSPGAGCPALQPDTPGSQPQPMDLRVGQRPTVEPPPEPALLTLQHPQRLHRHLFLAGLHQQRSAEPMR  
 LSMDPPMPELQGGQEQELRQLLNKDKSKRSVAVSSVVKQKLAEVILKKQQAALERTVHPSSPSIPYRTL  
 EPLDTEGAARSVLSFLPPVPSLPTEPEHFPLRKTVSEPNLKLRYKPKKSLERRKNPLLRKESAPPSLR  
 RRPAAETLGDSSPSSSTPASGCSSPNDSEHGPNPALGSEADGDRRTHSTLGPGRPVLGPNHAPLFLHHGL  
 EPEAGGTLPSRLQPILLLDPSVSHAPLWTVPLGPLPFHFAPLLTTERLSGSGLHRPLNRRSEPLPPS  
 ATASPLLAPLQPRQDRKPHVQLIKPAISPPQRPAPKPEKPRLRQIPSAEDLETDGGGVGPMANDGLEHR  
 ESGRGPPEGRGSIISLQQHQVPPWEQQHLAAGRLSQGSPGDSVLIPLAQVGHRLSRTQSSPAAPVLLSP  
 EPTCQTQVLNSETPATGLVYDSVMLKHQCSCGDNSKHPEHAGRIQSIWSRLQERGLRSQCECLGRKAS  
 LEELQSVHSERHVLLYGTNPLSRLKLDNGKLTGLLAQRTFVMLPCGGVGVDTDTIWNELHSSNAARWAAG  
 SVTDLAFKVASRELKNGFAVVRPPGHHADHSTAMGFCFNSVAIACRQLQQHGKASKILIVDWDVHHGNG  
 TQQTFYQDPSVLYISLHRHDDGNFFPGSGAVDEVTGSGEGFNVNVAWAGGLDPPMGDPEYLAAFRIVVM  
 PIAREFAPDLVLSAGFDAAEHGPAPLGGYHVSACKCFGYMTQQLMNLAGGAVVLALEGGHDLTAICDASE  
 ACVAALLGNKVDPLSEESWKQKPNLSAIRSLEAVVRVHRKYWGCMQRLASCPDSWLPRVPGADAEVEAVT  
 ALASLSVGILAE DRP SERLVEEEEEPMNL

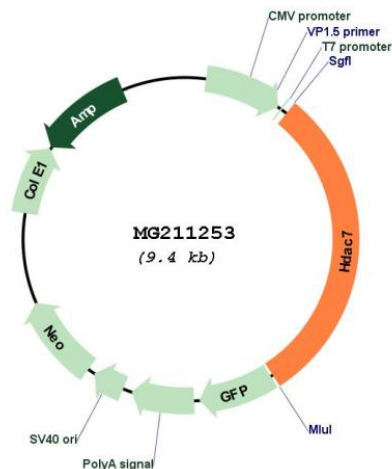
TRTRPLE - GFP Tag - V

**Restriction Sites:**

SgfI-MluI

**Cloning Scheme:**



**Plasmid Map:**


**ACCN:** NM\_019572

**ORF Size:** 2814 bp

**OTI Disclaimer:** The molecular sequence of this clone aligns with the gene accession number as a point of reference only. However, individual transcript sequences of the same gene can differ through naturally occurring variations (e.g. polymorphisms), each with its own valid existence. This clone is substantially in agreement with the reference, but a complete review of all prevailing variants is recommended prior to use. [More info](#)

**OTI Annotation:** This clone was engineered to express the complete ORF with an expression tag. Expression varies depending on the nature of the gene.

**Components:** The ORF clone is ion-exchange column purified and shipped in a 2D barcoded Matrix tube containing 10ug of transfection-ready, dried plasmid DNA (reconstitute with 100 ul of water).

**Reconstitution Method:**

1. Centrifuge at 5,000xg for 5min.
2. Carefully open the tube and add 100ul of sterile water to dissolve the DNA.
3. Close the tube and incubate for 10 minutes at room temperature.
4. Briefly vortex the tube and then do a quick spin (less than 5000xg) to concentrate the liquid at the bottom.
5. Store the suspended plasmid at -20°C. The DNA is stable for at least one year from date of shipping when stored at -20°C.

**RefSeq:** [NM\\_019572.3](#)

**RefSeq Size:** 4147 bp

**RefSeq ORF:** 2817 bp

**Locus ID:** 56233

**UniProt ID:** [Q8C2B3](#)

**Cytogenetics:** 15 F1

**Gene Summary:**

Responsible for the deacetylation of lysine residues on the N-terminal part of the core histones (H2A, H2B, H3 and H4). Histone deacetylation gives a tag for epigenetic repression and plays an important role in transcriptional regulation, cell cycle progression and developmental events. Histone deacetylases act via the formation of large multiprotein complexes. Involved in muscle maturation by repressing transcription of myocyte enhancer factors such as MEF2A, MEF2B and MEF2C. During muscle differentiation, it shuttles into the cytoplasm, allowing the expression of myocyte enhancer factors. Positively regulates the transcriptional repressor activity of FOXP3 (By similarity). Serves as a corepressor of RARA, causing its deacetylation and inhibition of RARE DNA element binding (By similarity). In association with RARA, plays a role in the repression of microRNA-10a and thereby in the inflammatory response (By similarity).[UniProtKB/Swiss-Prot Function]