

Product datasheet for **MG211247**

Pde2a (NM_001008548) Mouse Tagged ORF Clone

Product data:

Product Type:	Expression Plasmids
Product Name:	Pde2a (NM_001008548) Mouse Tagged ORF Clone
Tag:	TurboGFP
Symbol:	Pde2a
Synonyms:	CGS-PDE; cGSPDE
Mammalian Cell Selection:	Neomycin
Vector:	pCMV6-AC-GFP (PS100010)
E. coli Selection:	Ampicillin (100 ug/mL)



[View online »](#)

ORF Nucleotide Sequence:

>MG211247 representing NM_001008548
 Red=Cloning site Blue=ORF Green=Tags(s)

TTTTGTAATACGACTCACTATAGGGCGGCCGGGAATTCGTCGACTGGATCCGGTACCGAGGAGATCTGCC
 GCC**GCGATCGCC**

ATGGGGCAGGCATGCGGCCACTCCATCCTCTGCAGGAGCCAGCAGTACCCGGCAGCGCACCGGCTGAGC
 CGCGGGCCAGCAGGTCTTCTCAAGCCGACGAGCCGCCGCGCAGCCATGCGCCGACAGCCTGCAGGA
 TGCTTTGCTGAGCCTAGGCGCCGTTATCGACATTGCTGGCCTGCGACAGGCTGCCAGGGATGCCCTCTCA
 GCCGTGCTCCCCAAAGTGGAGACTGTCTACACCTACCTGCTAGATGGGGAGTCCAGACTGGTGTGTGAGG
 ACCCCCCATGAGCTGCCACAGGAAGGAAAAATTCGAGAAGCTGTGATCTCTCAGAAGCGGCTGAGTTG
 CAATGGGTGGGACCTTCGGACCTACTGGGAAAGCCCTTGCCAGGCTGGTGGCTCCACTGGCTCCTGAC
 ATGCAAGTGTGGTCATACCCCTGCTGGACAAGGAGACTGGAAGTGTGGCAGCTGTCATCTTGGTGCCT
 GTGGCCAGCTGAGTGACAGTGAAGAACAGAGCTTGCAGGTGGTAGAGAAGCACGCTCTGGTAGCCCTGCG
 GAGGGTGCAGGCCCTGCAGCAGCGCAGGCTGAAGCTGTTCAGAACACGTCAGTGGATGCCTCTGAAGAT
 CAAAAGGATGAGAAGGGGTACACCGACCATGACCGAAAGATCCTGCAACTGTGTGGGAACTCTTTGACT
 TGGATGCTACTTCTCTGCAGCTCAAAGTCTTCAATATCTGCAGCAGGAGACACAGGCCACTCACTGCTG
 CCTCTGCTGGTGTGGGAGGACAATCTACAGCTTCTCTGCAAGGTCATTGGAGACAAAGTGTGGGAGAA
 GAGGTCAGCTTTCCATTGACCATGGGACGCTCTGGGGCAGGTGGTGAAGACAAGCAGTGTATCCAGTTGA
 AGGACCTAACCTCTGACGATGTGCAACAGCTGCAAAACATGTTGGGTTGTGAGCTGCAGGCTATGCTGTG
 TGTCCCTGTATCAGCCGAGCCACTGACCAGGTGGTGGCCCTGGCTTGCCTTCAACAAGCTTGGAGGA
 GATTTCTTACAGATGAGGATGAACACGTGATCCAACACTGCTTCCACTACACAGGCAGGCTGCTCACCA
 GCACCTTGGCCTTCCAGAAGGAGCAGAAGCTCAAGTGTGAGTGCCAGGCTCTTCTCCAAGTGGCAAAGAA
 CCTCTTCAACCACCTGGATGATGCTCTGTCTGTCTACAGGAGATCATCACGGAAGCCAGAAACCTCAGC
 AACGCAGAGATCTGCTCGGTGTTCTGTGCTGGATCAGAACGAGCTGGTGGCCAAGGTGTTTCGATGGTGGCG
 TTGTGGACGATGAGAGTTATGAGATCCGCATCCCGCGGACCAAGGCATCGCGGGCCACGTGGCGACTAC
 GGGCCAGATCCTGAACATCCCAGATGCATATGCCCATCCGCTTTTCTATCGCGCGTAGATGACAGCACT
 GGCTTCCGCACGCGCAACATTCTCTGCTTCCCTATCAAGAACGAGAACCAGGAGGTCATTGGTGTGGCTG
 AGCTAGTGAACAAGATCAATGGGCCATGGTTCAGCAAGTTTGTGAGGACCTGGCCACAGCCTTCTCCAT
 CTACTGTGGCATCAGCATCGCCACTCTCTCTATACAAAAGGTGAATGAAGCCCAATACCGCAGCCAC
 CTGGCCAAATGAGATGATGATGTATCATATGAAGGTCTCTGATGATGAATACACCAAGCTTCTCCAGATG
 GCATCCAACCTGTGGCCGCAATTGACTCCAACCTTTGCCAACTTTACCTACACGCCTCGGTCTCTGCCTGA
 GGACGACACTTCTATGGCCATCCTGAGCATGCTGCAAGACATGAACCTTCAATAACTACAAAATTGAC
 TGCCCAACTCTGGCCGATTCTGCCTGATGGTGAAGAAAGGCTACCGGGATCCACCCTACCACAACCTGGA
 TGCACGCCTTCTCTGTCTCTCAATTTTGTACCTGCTCTACAAGAATCTGGAGCTCTCCAACCTACCTCGA
 GGACATCGAGATCTTTCGATTGTTTATTTCTGTCATGTGTCATGACCTGGACCACAGAGGCACAAACAAC
 TCCTTCCAGGTGGCCTCGAAATCTGTGCTGGCCGCACTCTACAGCTCAGAGGGCTCTGTGATGGAGAGGC
 ACCACTTTGCTCAAGCCATTGCTATCCTCAACACCCACGGCTGCAATATCTTTGACCACTTCTCTCGGAA
 GGACTATCAGCGCATGCTGGACCTGATGAGGGACATCATTTGGCTACAGACCTGGCACACCACCTCCGC
 ATCTTCAAGGACCTGCAGAAGATGGCTGAAGTGGGTTATGACCGAAACAACAGGCAACACCACAGGCTTC
 TTCTGTGCTCCTCATGACCTCCTGTGACCTCTGTGACCAGACAAAGGGCTGGAAGACCACCAGAAAGAT
 TGCAGAGCTGATCTACAAAGAGTTCTTCTCCCAGGGAGACTTGGAGAAGGCCATGGGCAACCCAGCCGATG
 GAGATGATGGACCGTGAAGGCCTACATCCCTGAGCTTCCAGATCAGCTTTATGGAGCACATTGCCATGC
 CTATCTACAAGCTTTTACAAGACCTGTTCCCAAGGCGGACAGCTGTATGAACGTGTGGCTCCAACCG
 TGAGCACTGGACCAAGGTGTCCACAAGTTCACCATCCGAGGCCCTCCCAAGTAACAACCTCGTGGATTTCT
 CTGGACGAGGAATACGAGGTCCCGATTTGGACGGCACCAGAGCTCCTGTCAATGGCTGCTGCAGCCTCG
 AGGGC

ACGCGTACGCGGCCGCTCGAG - GFP Tag - GTTTAA

Protein Sequence: >MG211247 representing NM_001008548
 Red=Cloning site Green=Tags(s)

MGQACGHSILCRSQYPAARPAEPRGQQVFLKPDEPPPQPCADSLQDALLSLGAVIDIAGLRQAARDALS
 AVLPKVETVYTYLLDGE SRLVCEDPPHELPOEGKIREAVISQKRLSCNGLGPSDLLGKPLARLVAPLAPD
 MQVLVIPLLDKETGSVAAVILVHCGQLSDSEEQSLQVVEKHALVALRRVQALQRRRPEAVQNTSVDASE
 QKDEKGYTDHDRKILQLCGELFDL DATSLQLKVLQYLQQETQATHCCLLLVSEDNLQLSCKVIGDKVLGE
 EVSFPLTMGRLGQVVEDKQCIQLKDLTSDDVQQLQNMLGCELQAML CVPVISRATDQVVALACAFNKLGG
 DFFTDEDEHVIQHCFHYTGTVL TSTLAFQKEQKLKCECQALLQVAKNLFTHLDDVSVLLQEII TEARNLS
 NAEICSVFLLDQNELVAKVFDGGVVDDES YEIRIPADQGIAGHVATTGQILNIPDAYAHLPLFYRGVDDST
 GFRTRNILCFPIKNENQEVIGVAELVNKINGPWF SKFDEDLATAFSIYCGISIAHSLLYKYNVNEAQYRSH
 LANEMMMYHMKVSDDEYTKLLHDGIQPVA AIDSNFANFTYTPRSLPEDDTSMAILSMLQDMNF INNYKID
 CPTLARFCLMVKKGYRDPYPYHNWMHAF SVSHFCYLLYKNLELSNYLEDIEIFALFISCMCHDLDRGTNN
 SFQVASKSVLAALYSSEGSVMERHHFAQAI AILNTHGCNIFDHF SRKDYQRMLDLMRDII LATDLAHLRL
 IFKDLQKMAEVGYDRNNRQHRLLLCLLMT SCDLSDQTKGWKTRKIAELIYKEFFSQGDLEKAMGNRPM
 EMMDREKAYIPELQISFMEHIAMPIYKLL QDLFPKAAEL YERVASNREHWTKVSHKFTIRGLPSNNSLDF
 LDEEYV PDLGTRAPVNGCCSLEG

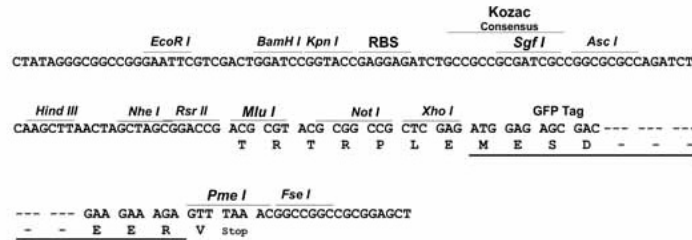
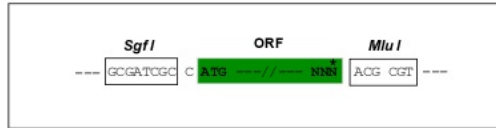
TRTRPLE - GFP Tag - V

Restriction Sites:

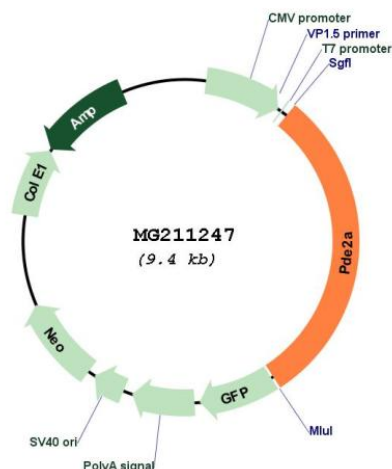
SgfI-MluI

Cloning Scheme:

Cloning sites used for ORF Shuttling:



Plasmid Map:



ACCN: NM_001008548

ORF Size: 2805 bp

OTI Disclaimer: The molecular sequence of this clone aligns with the gene accession number as a point of reference only. However, individual transcript sequences of the same gene can differ through naturally occurring variations (e.g. polymorphisms), each with its own valid existence. This clone is substantially in agreement with the reference, but a complete review of all prevailing variants is recommended prior to use. [More info](#)

OTI Annotation: This clone was engineered to express the complete ORF with an expression tag. Expression varies depending on the nature of the gene.

Components: The ORF clone is ion-exchange column purified and shipped in a 2D barcoded Matrix tube containing 10ug of transfection-ready, dried plasmid DNA (reconstitute with 100 ul of water).

Reconstitution Method:

1. Centrifuge at 5,000xg for 5min.
2. Carefully open the tube and add 100ul of sterile water to dissolve the DNA.
3. Close the tube and incubate for 10 minutes at room temperature.
4. Briefly vortex the tube and then do a quick spin (less than 5000xg) to concentrate the liquid at the bottom.
5. Store the suspended plasmid at -20°C. The DNA is stable for at least one year from date of shipping when stored at -20°C.

RefSeq: [NM_001008548.4](#), [NP_001008548.1](#)

RefSeq Size: 4208 bp

RefSeq ORF: 2808 bp

Locus ID: 207728

Cytogenetics: 7 E2

Gene Summary:

Cyclic nucleotide phosphodiesterase with a dual-specificity for the second messengers cAMP and cGMP, which are key regulators of many important physiological processes.
[UniProtKB/Swiss-Prot Function]