

## Product datasheet for **MG211158**

### Trak2 (NM\_172406) Mouse Tagged ORF Clone

#### Product data:

Product Type:	Expression Plasmids
Product Name:	Trak2 (NM_172406) Mouse Tagged ORF Clone
Tag:	TurboGFP
Symbol:	Trak2
Synonyms:	2900022D04Rik; 4733401O11Rik; AI480836; Als2cr3; AW046271; CALS-C; GRIF-1; GRIF1; mKIAA0549
Mammalian Cell Selection:	Neomycin
Vector:	pCMV6-AC-GFP (PS100010)
E. coli Selection:	Ampicillin (100 ug/mL)



[View online »](#)

**ORF Nucleotide Sequence:**

>MG211158 representing NM\_172406  
 Red=Cloning site Blue=ORF Green=Tags(s)

TTTTGTAATACGACTCACTATAGGGCGGCCGGAATTCGTCGACTGGATCCGGTACCGAGGAGATCTGCC  
 GCC**GCGATCGCC**

ATGAGTCAATCCCAGAATGCCATTTTCAAATCACGAACAGGTGAAGCAAACCTCATGAGTAGCAATCATA  
 GAGACTCGGAGAGCATCACTGATGTCTGCTCCAACGAGGATCTCCCTGAAGTCGAGCTGGTGAACCTTGCT  
 AGAAGAACAGCTGCCACAGTATAAGCTAAGAGTAGATTCTTTTTTCTCTATGAAAAACCAAGACTGGGCA  
 CAGTCATCACACCAGCAGCAGGATGCGCCTGAGACCCTCTCCCCAGTCCTTGCTGAAGAGACGTTCCGCT  
 ACATGATTCTAGGCACAGACAGAGTGGAGCAGATGACCAAAACCTACAATGACATTGACATGGTCACACA  
 TCTCTGGCAGAGAGGGATCGAGATCTAGAGCTAGCTGCCGAATTGGGCAAGCTCTTTAAAGCGAAAC  
 CATGTCTTATCTGAGCAGAATGAAGCTCTGGAGGAGCAGTTGGGACAAGCCTTTGATCAAGTTAATCAGC  
 TGCAGCACGAGCTCTCAAGAAAGACGAGCTGCTCCGAATCGTCTCTATTGCCTCCGAGGAGAGTGAAC  
 GGATTCTAGCTGCTCCACGCCCTTCGGTTCAATGAGTCTTCAGCTTATCTCAGGGGCTGCTGCAGCTG  
 GACATGCTGCATGAGAAGCTCAGGGAGCTGGAAGAAGAGAACATGGCCCTACGATCCAAGCTTGTCCATA  
 TCAAGACAGAAACATTTACCTATGAAGAGAAGGAACAACAGCTCGTCAATGACTGTGTTAAAGAACTTCG  
 TGAGACCAATGCACAGATGTCCAGAATGACTGAAGAGCTGTGGGAAAGAGCGACGAGCTGCTCCGGTAC  
 CAAGAGGAGATCTCCTCCTGCTGTCTCAGATCGTAGACCTTCAGCACAAACTGAAAGAGCATGTGATCG  
 AGAAGGAAGAACTAAGACTTCACCTGCAGGCTTCCAAAGATGCCAGCGACAGCTGACAAATGGAGCTTCA  
 TGAGTTACAGGACAGGAACATGGAATGCCTGGGAATGTTACATGAGTCCCAAGAAGAAATAAAGAGCTT  
 CGTAGCAAGTCCGGCCCTTCTGCTCATCTGCTTCTCCAGTCTTACGGCGTTTTTACAGGGGAATCGT  
 TGGCAGCTGAGATTGAAGGGACCATGCGTAAAAAGCTGAGTTTGGATGAGGAATCTGTCTAAACAAAA  
 GGCCACAGCAGAAACGGGTGTTTGATACTGTCAAGGTTGCCAATGACACTCGGGGCCGCTCTGTACCTTC  
 CAGTCTGCTACCCATCCCAGGCTCCAACCGTTCAAGTGTATCATGACAGCAAAGCCCTTTGAGTCTG  
 GTGTCCAGCCAGCAGAGGACAAAACACTCCTGAGCCAGGGGCGAGCACAGAGGTTCCAGGAAACTCGCA  
 GCCCACAACCCCCAGGATCCCCTGAAGATAGTATCTGGTACTGCATTGCATCGCCTCAGCCTGAGA  
 AGACAGAACTACCTAAGTGAAGCAGTCTTTGCTGAGGAATGGGAACGGAAGATCCAGATCTTGGCTG  
 AGCAGGAGGAAGAAGTACGAGCTGTGACGCCCCACGGAGAACCTTGCCTCAGTCTGCACTGACCAGTC  
 GGAGACCACGGACTCGGCAGTGCCAGTGCCTTCGAGGCTTCATGCCAGAGAAGTTACAGATTGTCAAG  
 CCCCTAGAAGGATCACAGACTCTGCATCACTGGCAGCAGCTTGTCTCAGCCGAACCTGGGAACCATCTTG  
 ATCCACGCCAGGCGTCATCACTAAAGGCTTCACACAGGTGCCCAAGGATGTTGTCTACCACATCTCGGA  
 CTTAGAGGAGGATGAAGAAGAGGGCATCACTTTTCAGGTTTCAGCAGCCTCTTCAACTGGAGCAGAAACCT  
 GCACTGCCACGCCAGTAACGGGAATCTTTCTGCCGCCATGACCTCAGCGGGTGGACCAGGTACAGTTG  
 CAACTTCGAACCCAGGAAAGTGTCTCTCATTACCAACTCGACATTCACCTTCACCACCTGCAGGATCTT  
 ACATCCCTCTGACATCACTCAGTCAACCCTAGCTCCGGTTTCCCATCACTGGCCTGTGGCAGTAGTGCG  
 AGCAGCTCATCCAACACGGCTGTGAACCTCCCTGCTGCATCCTATAGACTAAGCATTGGCGAATCCATCA  
 CAAACCCGAGGGACTCCACCATAACCTTCAGTAGCACCAGGAGCTTAGCCAAACTCCTGCAGGAGCGAGG  
 CATCTCTGCTAAAGTGTACCACAGCCCGGCTTCAGAAAACCCCTCCTGCAGCCTTGCCCAAGGCCCTG  
 GCCACCCCTCCACACCACAAATTCACAGCGCAGTCAACGTGCTCCTCCCTTGGCCCTTTGAACCCC  
 GAGTGCATGTCTCCGAGAATTTCTGGCTTCCCGACCAGCTGAAACATTCTGCAAGAAATGTATGGCTT  
 GAGACCTTCAAGGGCCCTCCTGATGTTGGACAGCTGAAGATGAACTTGGTAGACAGGCTGAAGAGGCTG  
 GGAATAGCCAGGGTGGTCAAGACCCCTGATCCCCAGGAGAACGAAAAAGCCGAGAAGCAGAAATGGGTC  
 TTCAAAAACAGACCCTGCTGTTATTTAAATTCAGGTGGCAGTTTATTGTGGACTGAGGAGGAATCA  
 GAGTCTCCGGTCATGATGGGTAGCTTTGGAGCCCAAGTTGCACAACCTCACCCAAAATGGGTATCCTG  
 AAGGAAGAT

**ACGCGT**ACGCGGCCGCTCGAG - GFP Tag - GTTTAA

**Protein Sequence:** >MG211158 representing NM\_172406  
 Red=Cloning site Green=Tags(s)

MSQSQNAIFKSRTGEANLMSNHRDSEITDVC SNEDLPEVELVNLL EEQLPQYKLRVDSLFLYENQDWA  
 QSSHQQDAPETLSPVLA EETFRYMILGTD RVEQMTKTYNDIDMVTHLLAERDRDLELAARIGQALLKRN  
 HVLSEQNEALEEQLGQAFDQVNQLQHEL SKKDELLRIVSIASEESETDSSCSTPLRFNESFSLSQGLLQL  
 DMLHEKLRELEENMALRSKACHIKTETFTFYEEKEQQLVND CVKELRETNAQMSRMTEELSGKSD ELLRY  
 QEESISSL LSQIVDLQHKLKEHVIEKEELRLHLQASKDAQRQLTMELHELQDRNMECLGMLHESQEEIKEL  
 RSKSGPSAHLCF SQSYGVFTGESLAAEIEGTMRK KLSLDEESVSKQKAQQKRVFDTVKVANDTRGRSVTF  
 PVLLPIPGSNRSSVIMTAKPFESGVQPAEDK TLLSPGGSTEVP GNSQPTNPPGSPEDSLATALHRLSLR  
 RQNYLSEKQFFAE EWERKIQILAEQEEEVSSC DAPTENLASVCTDQSETTDLGSASCLRGFMPEKLQIVK  
 PLEGSQTLHHWQQLAQPNLGTILDPRPGVITKGFTQVPKDVVYHISDLEED EEEGITFQVQQPLQLEQKP  
 ALPTPVTGIFLPMTSAGGPGTVATSNPGKCLSF TNSTFTFTTCRILHPSDITQVTPSSGFPSLACGSSA  
 SSSSNTAVNSPAASYRLSIGESITNRRDSTITFSSTRSLAKLLQERGISAKVYHSPAENPLLQPCPKAL  
 ATPSTPPNSPAQSPCSSPLPFEP RVHSENFLASRPAETF LQEMYGLRPSRAPPDV GQLKMNLVDR LKRL  
 GIARVVKTPDPQENGKSREAEMGLQKPDPAVYLN SGGSLLCGLRRNQSLPVMG SFGAPVCTTSPKMGI L  
 KED

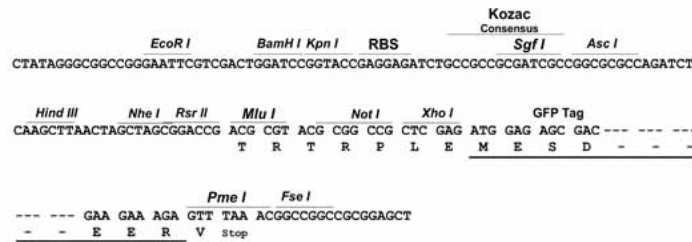
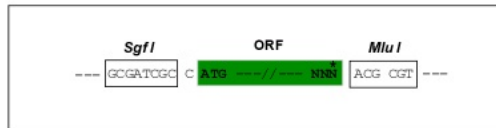
TRTRPLE - GFP Tag - V

**Restriction Sites:**

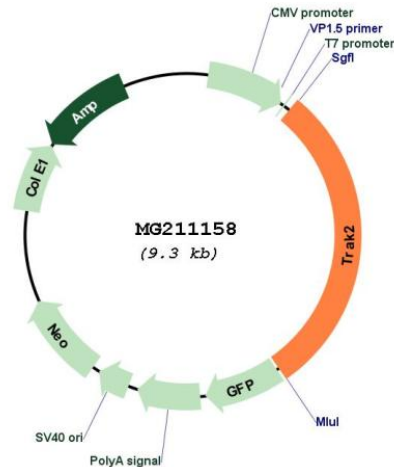
SgfI-MluI

**Cloning Scheme:**

Cloning sites used for ORF Shuttling:



## Plasmid Map:



ACCN: NM\_172406

ORF Size: 2739 bp

**OTI Disclaimer:** The molecular sequence of this clone aligns with the gene accession number as a point of reference only. However, individual transcript sequences of the same gene can differ through naturally occurring variations (e.g. polymorphisms), each with its own valid existence. This clone is substantially in agreement with the reference, but a complete review of all prevailing variants is recommended prior to use. [More info](#)

**OTI Annotation:** This clone was engineered to express the complete ORF with an expression tag. Expression varies depending on the nature of the gene.

**Components:** The ORF clone is ion-exchange column purified and shipped in a 2D barcoded Matrix tube containing 10ug of transfection-ready, dried plasmid DNA (reconstitute with 100 ul of water).

**Reconstitution Method:**

1. Centrifuge at 5,000xg for 5min.
2. Carefully open the tube and add 100ul of sterile water to dissolve the DNA.
3. Close the tube and incubate for 10 minutes at room temperature.
4. Briefly vortex the tube and then do a quick spin (less than 5000xg) to concentrate the liquid at the bottom.
5. Store the suspended plasmid at -20°C. The DNA is stable for at least one year from date of shipping when stored at -20°C.

RefSeq: [NM\\_172406.3](#), [NP\\_765994.2](#)

RefSeq Size: 6286 bp

RefSeq ORF: 2742 bp

Locus ID: 70827

Cytogenetics: 1 C1.3